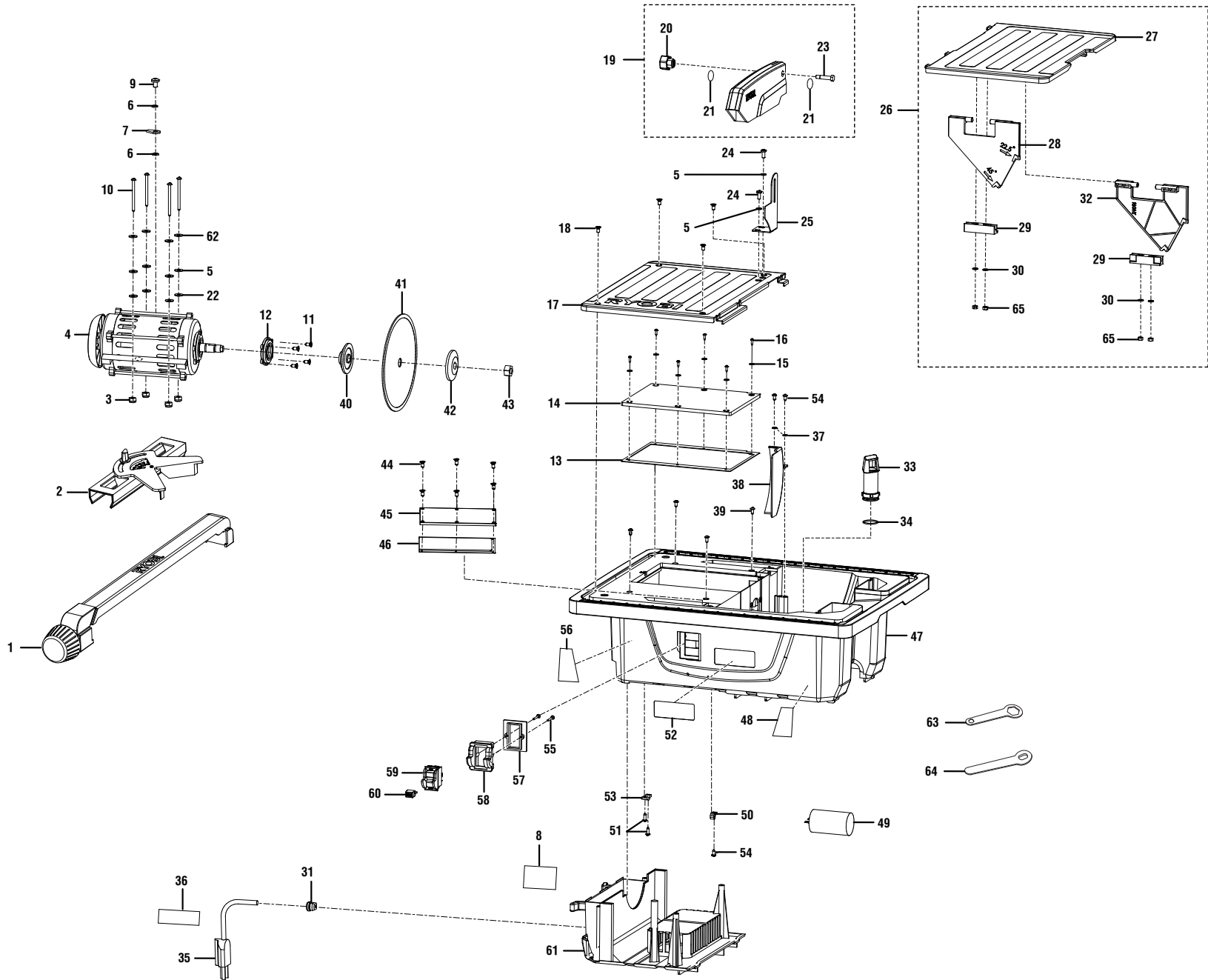


RYOBI TILE SAW - MODEL NUMBER WS721S

FIGURE A



RYOBI TILE SAW – MODEL NUMBER WS721S

The model number will be found on a plate attached to the housing. Always mention the model number in all correspondence regarding your **TILE SAW** or when ordering repair parts.

PARTS LIST FOR FIGURE A

Key Part No. Number	Description	Qty.	Key Part No. Number	Description	Qty.		
1	080009019703	Rip Fence Assembly.....	1	35	080009019708	Power Cord (Inc. Key No. 36).....	1
2	080009019704	Miter Guage Assembly.....	1	36	080009019903	Danger Label (GFCI).....	1
3	411012001	Hex Nut (M5)	4	37	080009019029	Washer (D4 x D9 x 0.8t).....	2
4	080009019700	Motor Assembly	1	38	080009019027	Baffle	1
5	080009019030	Washer (D5 x D9 x 0.8t).....	6	39	080009019018	Screw (M4 x 18 mm, Pan Hd.)	4
6	412042002	External Tooth Lock Washer (M4).....	2	40	080009019033	Inner Flange.....	1
7	089009019089	Grounding Lead.....	1	41	080009002061	Cutting Wheel.....	1
8	080009019904	Data Label	1	42	080009019034	Outer Flange.....	1
9	410132057	Screw (M4 x 8 mm, Pan Hd.)	1	43	080009019035	Hex Nut (M12 x 1.5 mm)	1
10	080009019031	Screw (M5 x 59.5 mm, Pan Hd.)	4	44	080009019008	Screw (M3 x 10 mm, Pan Hd.)	6
11	080009019021	Screw (M3 x 8 mm, Pan Hd.)	4	45	080009019007	Plate	1
12	080009019709	Front Seal Cap w/O-Rings	1	46	080009019006	Seal (Gasket)	1
13	080009019023	Rubber Gasket	1	47	080009019707	Housing w/Labels (Inc. Key Nos. 48, 52 and 56)	1
14	080009019024	Cover Plate.....	1	48	080009019900	Warning Label (English)	1
15	080009019026	Washer (D3 x D8.5 x 0.5t).....	6	49	080009019009	Capacitor.....	1
16	080009019025	Screw (M3 x 12 mm, Pan Hd.)	6	50	089110102109	Cord Clamp	1
17	080009019036	Work Table (Left).....	1	51	080009019016	Screw (M4 x 14 mm, Pan Hd.)	2
18	080009019037	Screw (M5 x 13.5 mm, Pan Hd.)	4	52	080009019901	Logo Label.....	1
19	080009019701	Blade Guard Assembly (Inc. Key Nos. 20-23).....	1	53	080009019015	Clamping Pad.....	1
20	080009019055	Blade Guard Knob.....	1	54	080009019014	Screw (M4 x 9.5 mm, Pan Hd.)	3
21	080009019905	No Hands Warning Label	2	55	080009019005	Screw (M3.5 x 25 mm, Pan Hd.)	2
22	412042001	External Tooth Lock Washer (M5).....	4	56	080009019902	Warning Label (French/Spanish)	1
23	080009019057	Screw (M6 x 30 mm, Hex Hd.)	1	57	080009019004	Switch Plate	1
24	080009019059	Screw (M5 x 10 mm, Pan Hd.)	2	58	080009019002	Switch Bezel.....	1
25	080009019054	Riving Knife	1	59	080009019710	Switch Assembly (Inc. Key No. 60)	1
26	080009019702	Work Table Assembly (Incl. Key Nos. 27-30, 32, and 65).....	1	60	080009019088	Switch Key	1
27	080009019060	Work Table (Right)	1	61	080009019017	Housing Block.....	1
28	080009019062	Bevel Plate (Left)	1	62	412021005	Spring Washer (M5).....	4
29	080009019063	Rotation Plate.....	2	63	080009019038	Wrench (A).....	1
30	080009019064	Washer (D5.4 x D14 x 1.0t).....	4	64	080009019039	Wrench (B).....	1
31	451010001	Strain Relief	1	65	080015001427	Lock Nut (M5).....	4
32	080009019061	Bevel Plate (Right)	1	Not Shown:			
33	080009019706	Overflow Drain Assembly (Inc. Key No. 34).....	1	988000024	Operator's Manual.....	1	
34	080009019011	O-Ring (D24.45 mm x D2.5 mm).....	1	8-9-11			
				(Rev:04)			

RYOBI TILE SAW – MODEL NUMBER WS721S

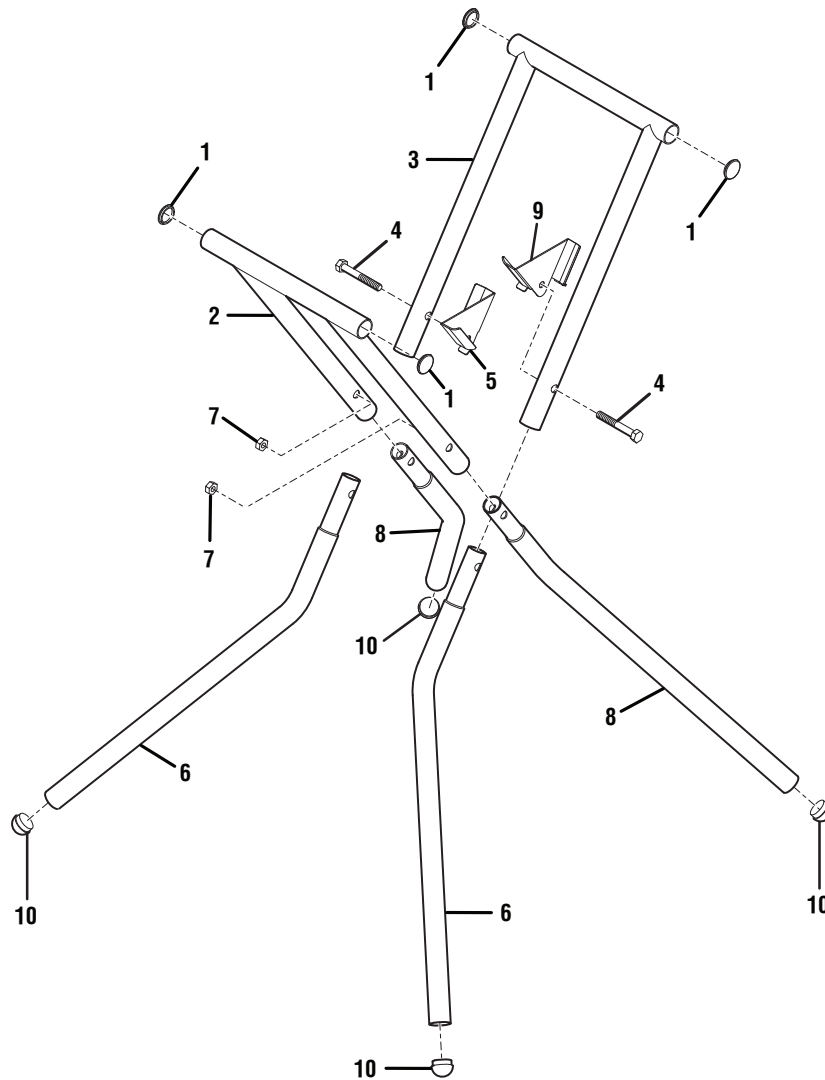


FIGURE B

Key Part No.	Part Number	Description	Qty.
1	080009019078	Cap	4
2	080009019080	Upper Leg (B).....	1
3	080009019079	Upper Leg (A).....	1
4	080009019083	Screw (M8 x 65 mm, Hex Hd.).....	2
5	080009019082	Bracket (Right)	1
6	080009019085	Lower Tube (A)	2

Key Part No.	Part Number	Description	Qty.
7	080009019084	Lock Nut (M8).....	2
8	080009019086	Lower Tube (B).....	2
9	080009019081	Bracket (Left).....	1
10	080009019087	Leg Cap	4
	080009019705	Leg Stand Assembly (Inc. Key Nos. 1-10)	1