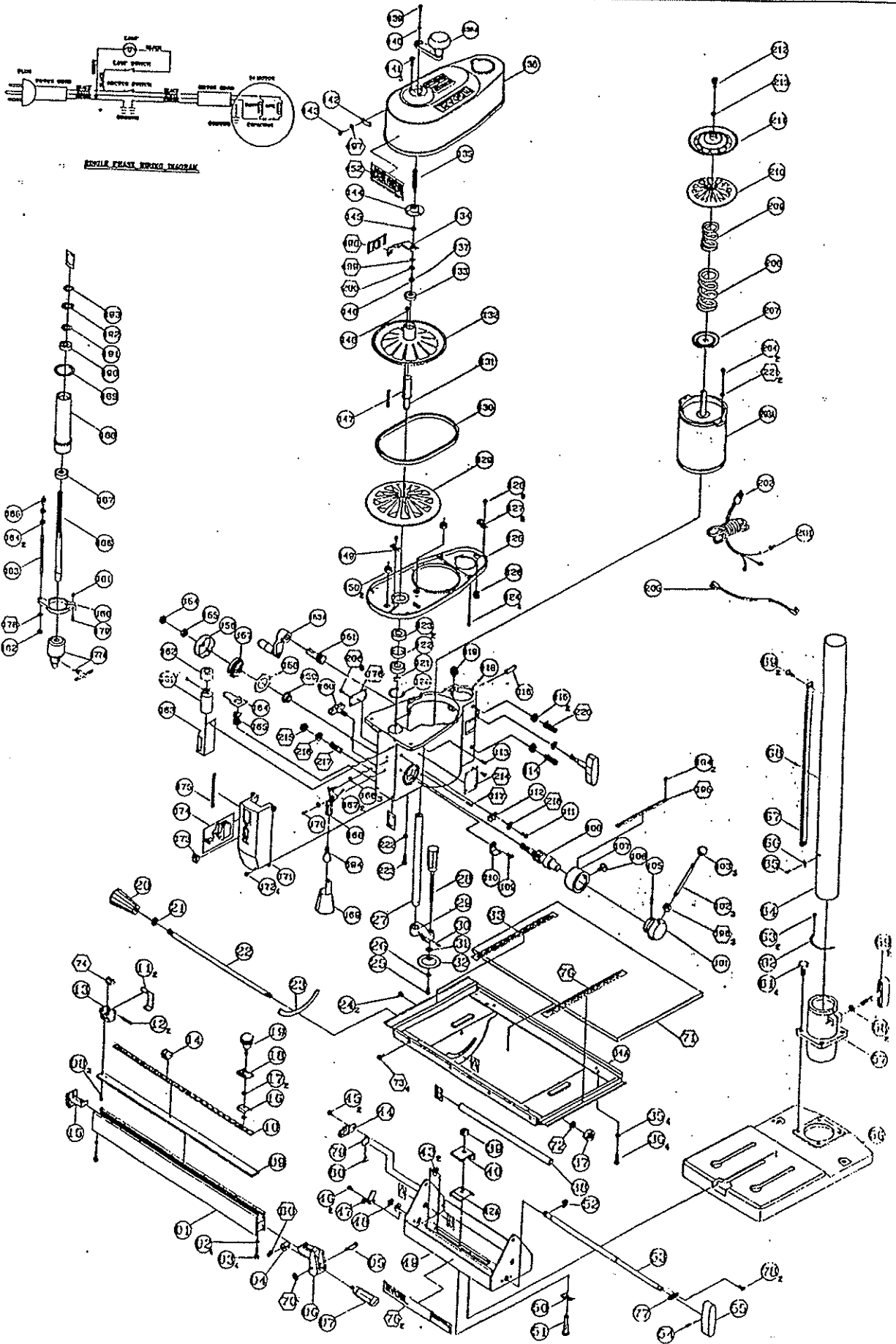


18 1/2" WOOD DRILLING SYSTEM WDP1850



**PARTS LIST FOR AFTER SALES SERVICE
MODEL WDP1850**

REF	PART NO.	DESCRIPTION	QTY	REF	PART NO.	DESCRIPTION	QTY
1	4950012	PARALLEL BRACKET	1	50	4900036	SPRING PLATE	1
2	4900030	SPRING WASHER	4	51	4130130	T-BOLT	1
3	4130121	BOLT	4	52	4100020	E-RING	1
4	4900031	ECCENTRIC-CAM	1	53	4850015	LOCKING ROD	1
5	4120016	ECCENTRIC	1	54	4120018	SPRING PIN	1
6	4950013	FRONT CLAMP	1	55	4830013	HANDLE	1
7	4830010	CLAMP HANDLE	1	56	4010012	BASE	1
8	4130149	SCREW TAPPING(M4X18)	2	57	4010013	COLUMN HOLDER	1
9	4960032	SHEET BAR	1	58	4900037	FLAT WASHER	2
10	4950025	TILT BRACKET	1	59	4830022	HANDLE	2
11	4950026	SET PLATE	2	61	4130131	HEX HD. BOLT	4
12	4120021	SPRING PIN	2	62	495001	HANDLE	1
13	4950027	GUIDE CLAMP	1	63	4120019	RIVET	2
14	4950028	POINTER	1	64	4960014	BODY COLUMN	1
15	4950014	REAR CLAMP	1	65	4130132	PAN HD SCREW	1
16	4950029	SLIDE PLATE	1	66	4150005	NEEDLE POINTER	1
17	4130018	FLAT WASHER	2	67	4960015	RACK	1
18	4950030	SLIDER	1	68	4120020	SPRING PIN	1
19	4130274	KNOB	1	69	4130020	SCREW	2
20	4830011	KNOB	1	70	4900038	SELF-LOCKING RING	1
21	4900032	WASHER	1	71	4850016	BOARD	1
22	4130122	LOCKING ROD	1	72	4900034	FLAT WASHER	1
23	4950015	TILTING SCALE	1	73	4130134	PAN HD. TAP SCREW	4
24	4120017	RIVET	2	74	4950031	ANCHOR BLOCK	1
25	4130123	PAN HD. SCREW	1	75	4910039	LABEL-VERSA TABLE	2
26	4900033	FLAT WASHER	1	76	4950032	TILT BRACKET	1
27	4960011	CLAMP BAR	1	77	4900101	RETAINING CLIP	1
28	4830012	CLAMP HANDLE	1	78	4130275	SCREW TAPPING(M5X.08)	2
29	4960012	WISE BEARING	1	79	4950033	ANCHOR PLATE	1
30	4120018	SPRING PIN	1	101	4130027	HUB	1
31	4900034	FLAT WASHER	1	102	4130135	HANDLE BAR ASSEMBLY	3
32	4940002	FLANGE	1	104	4130009	RIVET	2
33	4850012	BRACKET-TILT	1	105	4120021	SPRING PIN	1
34	4850013	TABLE ASS'Y	1	106	4130136	LOCKING SCREW	1
35	4130124	HEX NUT	4	107	4950004	SCALE RING	1
36	4130125	HEX. HD. BOLT	4	108	4110010	FEED SHAFT	1
37	4130126	NUT CHUCK	1	109	4130137	SCREW	1
38	4960013	SPACER	1	110	4150006	NEEDLE POINTER	1
39	4130127	NUT CHUCK	1	111	4130138	SCREW	1
40	4940003	ARM	1	112	4150007	CHUCK KEY HOLDER	1
41	4940004	SLEEVE	1	113	4130139	SCREW	1
42	4940005	RAIL	1	114	4130140	SET SCREW	1
43	4900032	FLAT WASHER	2	115	4130141	HEX. NUT	2
44	4940006	ANCHOR PLATE	1	116	4110011	GEAR SHAFT	1
45	4130128	SCREW	2	117	4120022	SET PIN	1
46	4130128	SCREW	1	118	4800013	HEAD	1
47	4150004	TILT POINTER	2	119	4200000	GEAR	1
	4100019	C-RING	1	120	4100021	RETAINING RING	1
49	4850014	TABLE BRACKET	1	121	4100022	C-RING	1

**PARTS LIST FOR AFTER SALES SERVICE
MODEL WDP1850**

REF	PART NO.	DESCRIPTION	QTY	REF	PART NO.	DESCRIPTION	QTY
122	4900039	SPACER	1	171	4550013	SWITCH BOX	1
123	9846204	BALL BEARING 6204ZZ	2	172	4130154	SCREW	4
124	4130142	SCREW	4	173	4550014	ROCKER SWITCH	1
125	4880020	LOWER PULLEY COVER	1	174	4550015	ROCKER SWITCH	1
126	4560012	STRAIN RELIEF	1	175	4950018	SCALE	1
127	4560013	CLAMP-CORD	3	176	4910042	DATA LABEL	1
128	4130143	SCREW	9	177A	4130018	CHUCK & KEY	1
129	4860012	LOWER SPINDLE PULLEY	1	178	4900040	SPRING WASHER	1
130	4860013	V-BELT	1	179	4130155	PAN HD. SCREW	1
131	4100023	DRIVING SLEEVE	1	180	4960017	SET RING	1
132	4860014	UPPER SPINDLE PULLEY	1	181	4130156	HEX NUT	1
133	9826201	BALL BEARING 6201ZZ	1	182	4130157	HEX NUT	1
134	4860015	SCALE PLATE	1	183	4130158	SET BOLT	1
135	4130144	KNOB BOLT	1	184	4130159	NUT	2
136	4880021	UPPER PULLEY COVER	1	185	4150008	POINTER	1
137	4120023	SPRING PIN	1	186	4100025	SPINDLE	1
138	4830015	HANDLE ASSY	1	187	971803001	BALL BEARING 6203ZZ	1
139	4130145	BOLT	1	188	4800014	QUILL	1
140	4900040	SPRING WASHER	1	189	4900043	RUBBER WASHER	1
141	4130146	SCREW	3	190	971803001	BALL BEARING 6203ZZ	1
142	4130002	SPEED INDICATOR	1	191	4900044	WASHER	1
143	4130147	SCREW	1	192	4130160	NUTLOCK	1
144	4900041	SUPPORT	1	193	4130161	SPINDLE NUT	1
145	4900042	FLAT WASHER	1	194	4590002	LAMP	2
146	4130148	CROWN NUT	1	195	4950019	SCALE	1
147	4960016	PARALLEL KEY	1	196	4130162	HEX. NUT	3
148	4130149	SCREW	1	197	4900045	WASHER	1
149	4560014	CLAMP-CORD	1	198	4900046	SPACER	1
150	4560015	STRAIN RELIEF	2	199	4900047	WAVE WASHER	1
151	4200001	WORM	1	200	4900048	COLLAR	1
152	4910043	SPEED LABEL	1	201	4560017	TERMINAL	1
153A	4830016	CRANK HANDLE ASS'Y	1	202	4520007	CORD	1
154	4130150	HEX. NUT	1	203	4030006	MOTOR	1
155	4130151	HEX. NUT	1	204	4130154	SCREW	2
156	4180013	SPRING CAP	1	205	4560018	LEAD WIRE ASS'Y	1
157	4180012	COIL SPRING	1	206	4130278	DRIVE SCREW	1
158	4830018	SPRING RETAINER	1	207	4530002	TRAY	1
159	4100024	SHAFT SEAT	1	208	4180015	COMPRESSION SPRING	1
160	4130152	QUILL SET SCREW	1	209	4180016	COMPRESSION SPRING	1
161	4550010	CAPACITOR	1	210	4860016	MOTOR PULLEY	1
162	4550011	CAPCITOR TERMINAL COVER	1	211	4860017	MOTOR PULLEY	1
163	4550012	CAPCITOR SEAT	1	212	4130163	BOLT	1
164	4550016	SET PLATE	1	213	4900049	FLAT WASHER	1
165	4180014	SPRING	1	214	4910040	WARNING LABEL	1
166	4130153	WASHER	1	215	300030100	HEX NUT M10	1
167	4130020	SCREW	2	216	4900049	SPRONG WASHER	1
168	459000	LAMP SOCKET	1	217	4130140	SET SREW	1
169	4880012	LAMP'S HOLE COVER	1	218	4900102	FLAT WASHER	1
170	4130020	SCREW	1	219	4100042	C-RING	1

**PARTS LIST FOR AFTER SALES SERVICE
MODEL WDP1850**

REF	PART NO.	DESCRIPTION	QTY	REF	PART NO.	DESCRIPTION	QTY
220	4860017	SET SCREW	1				
221	4900045	LOCK WASHER	1				
222	9300600	HEX NUT M6	1				

SERVICE NOTES: