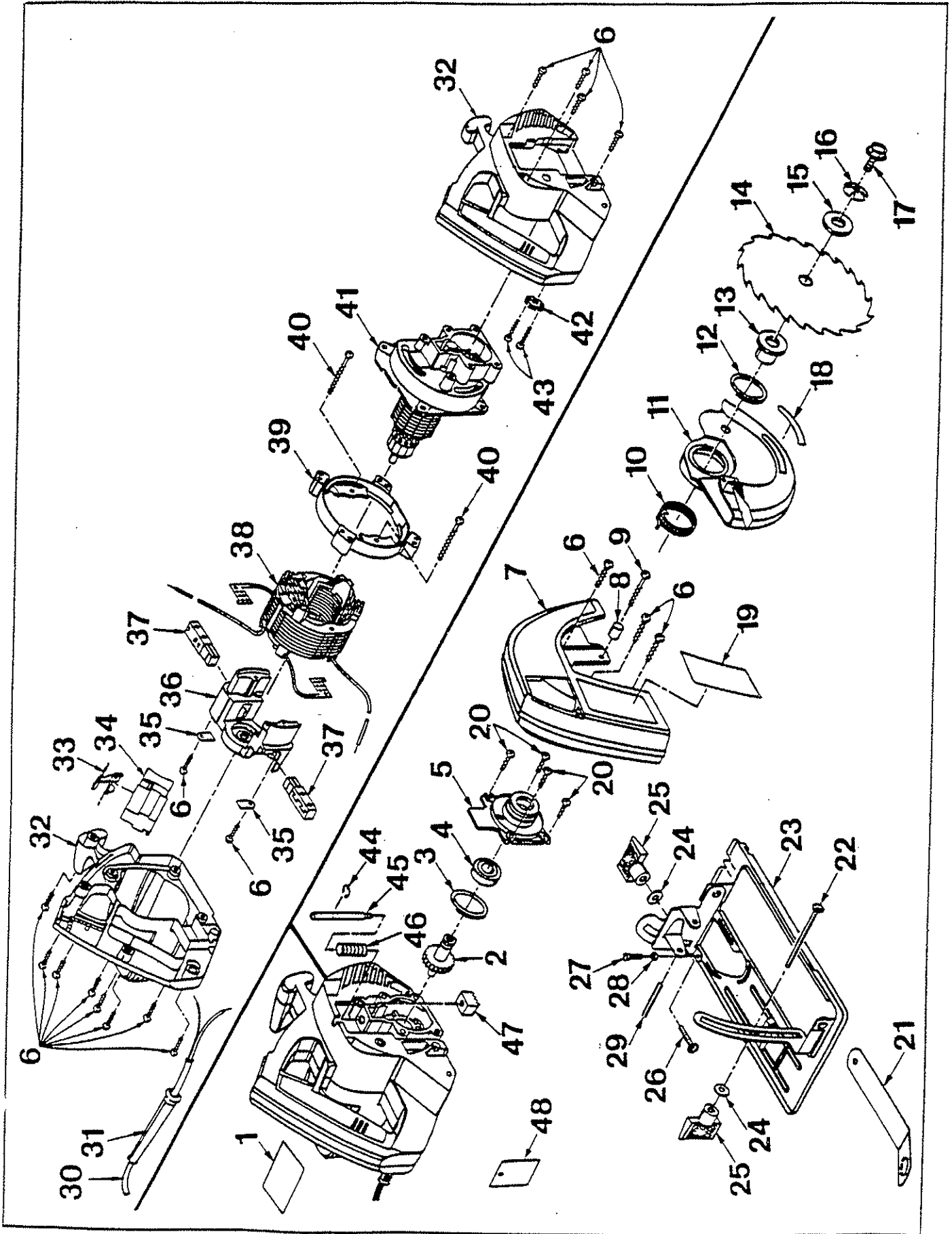


CIRCULAR SAW

W-660



**PARTS LIST FOR AFTER SALES SERVICE
MODEL W660**

REF	PART NO.	DESCRIPTION	QTY	REF	PART NO.	DESCRIPTION	QTY
	972333001	DATA PLATE	1	25	969458001	KNOB	2
2*	969858003	GEAR AND SPINDLE	1	26	621433001	CARRIAGE BOLT	1
3	617096002	RETAINING RING	1	27	614658010	SCREW	1
4	969235003	BALL BEARING #6003LLB	1	28	706404007	HEX NUT M8	1
5	968091002	LOWER BLADE GUARD SUPPORT	1	29	941401004	ROLL PIN	1
6	968702011	SCREW	17	30	969275005	CORD	1
7	968552002	FIXED BLADE GUARD	1	31	968603002	BEND RELIEF	1
8	968419002	BUMPER	1	32	969618005	HOUSING ASSEMBLY	1
9	617524004	SCREW	1	33	968458003	LOCK-OFF BUTTON	1
10	967952001	TORSION SPRING	1	34	968303017	SWITCH	1
11	969578001	LOWER BLADE GUARD ASS'Y	1	35	617800002	BRUSH TUBE CLAMP	2
12	718602804	RETAINING RING	1	36	969921001	BEARING SUPPORT W/HEAT SINK	1
13	967887003	INNER BLADE WASHER	1	37	968304009	BRUSH TUBE ASSEMBLY	2
14	967895001	BLADE	1	38	968307046	FIELD ASSEMBLY	1
15	998463001	OUTER BLADE WASHER	1	39	968088001	FAN SHROUD	1
16	623547002	SPRING WASHER	1	40	972147026	SCREW	2
17	612999001	BLADE SCREW	1	41*	968306046	ARMATURE ASSEMBLY	1
18	999988001	LABEL	1	42	967917001	CORD CLAMP	1
19	969579001	LOGO PLATE	1	43	968700011	SCREW	2
20	970582001	SCREW	4	44	623111002	RETAINING RING	1
	967074001	WRENCH	1	45	968907002	GEAR RACK SHAFT	1
22	621433013	CARRIAGE BOLT	1	46	621342000	SPRING	1
23	969562002	BASE ASSEMBLY	1	47	968906001	GEAR RACK	1
24	931744059	WASHER	2	48	990147001	WARNING TAG	1

SERVICE NOTES:

* The armature/gear case assembly and gear must be replaced as a set in the event that the gear case on the saw employs a needle bearing for the gear shaft. The new style armaturer/gear case assembly employs a sleeve bearing with a shoulder and is not compatible with the old gear shaft and vice versa.