



Operating Instructions and Parts Manual

18-inch Metal/Wood Cutting Band Saw

Model VBS-18MW

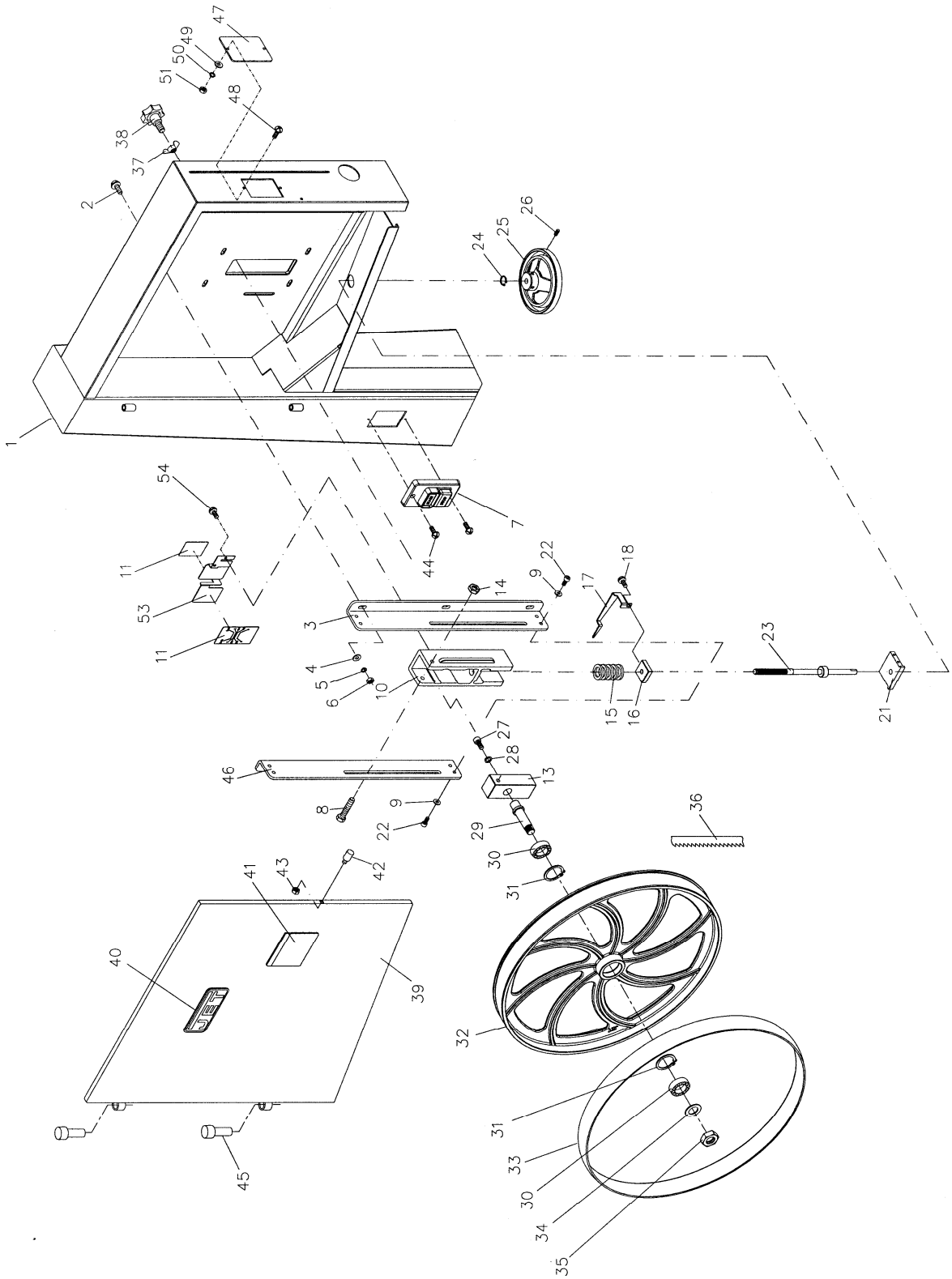


JET

427 New Sanford Road
LaVergne, TN 37086-4184, USA
Ph.: 800-274-6848
www.jettools.com

Part No. M-414418
Revision C1 01/2016
(ECR TW0126)
Copyright © 2016 JET

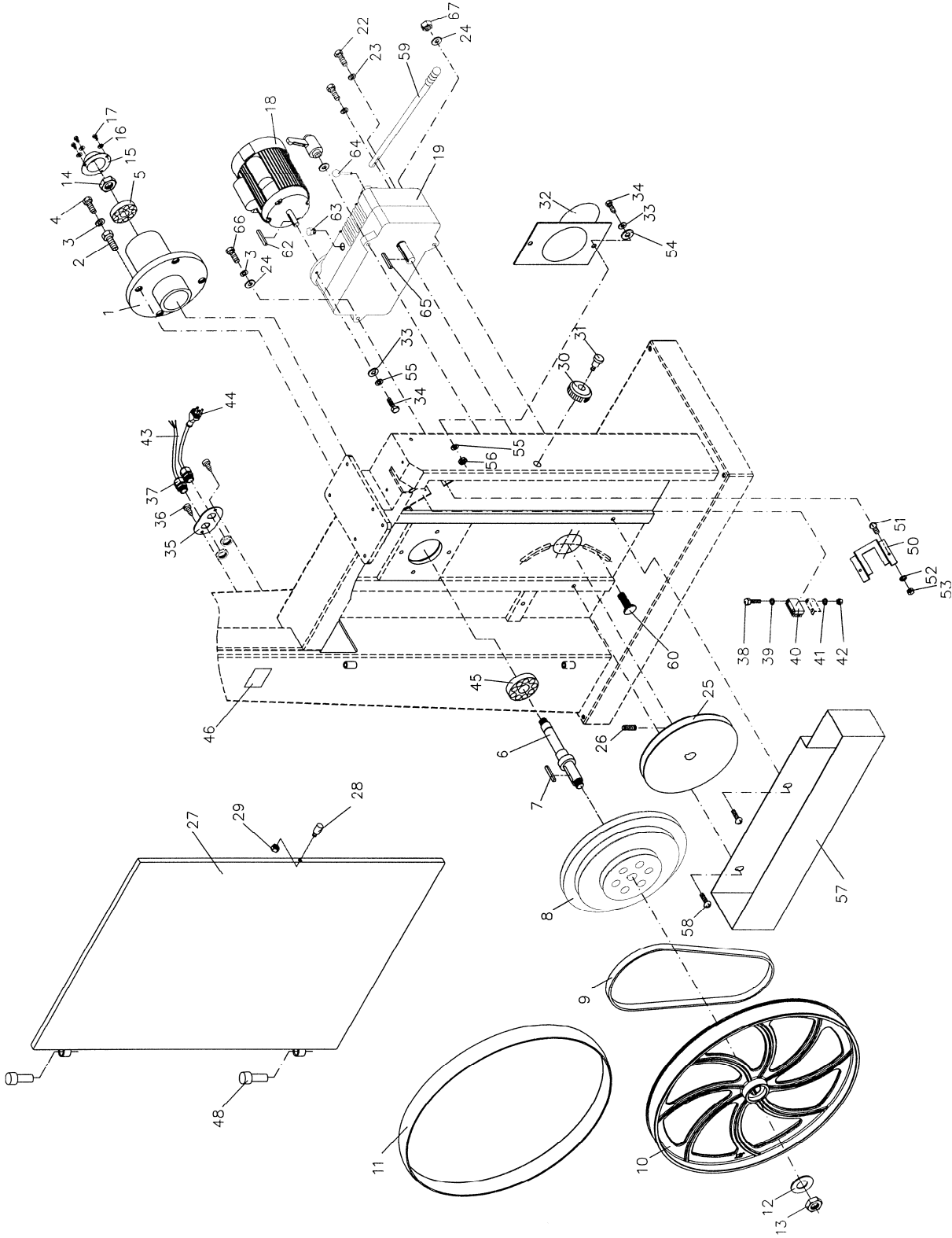
17.1.1 Upper Wheel Assembly



17.1.2 Parts List: Upper Wheel Assembly

Index No.	Part No.	Description	Size	Qty
1	VBS18MW-101G	Saw Body		1
2	TS-0152011	Carriage Bolt	5/16-18x1	6
3	JWBS18DX-103	Upper Wheel Bracket (Right Side)		1
4	TS-0680031	Flat Washer	5/16	6
5	TS-0720081	Lock Washer	5/16	6
6	TS-0561021	Hex Nut	5/16-18	6
7	JWBS18-107	Switch		1
8	TS-1490151	Hex Cap Screw	M8x80	1
9	TS-0680021	Flat Washer	1/4	4
10	JWBS18DX-110	Sliding Bracket		1
11	VBS18MW-111	Blade Tension Indicator		2
13	JWBS18DX-113	Shaft Bracket		1
14	TS-1540061	Hex Nut	M8	1
15	JWBS18-115	Spring		1
16	JWBS18-116	Square Nut		1
17	JWBS18DX-117	Pointer		1
18	JWBS18-118	Screw	M5x8	1
21	JWBS18DX-121	Bracket		1
22	TS-0050021	Hex Cap Screw	1/4-20x5/8	4
23	JWBS18DX-123	Blade Adjusting Screw		1
24	JWBS18-124	E-Ring	E-9	1
25	JWBS18-125	Hand Wheel		1
26	TS-0267041	Set Screw	1/4-20x3/8	2
27	TS-0209021	Socket Head Cap Screw	3/8-16x5/8	1
28	TS-0720091	Lock Washer	3/8	1
29	JWBS18-129	Upper Wheel Shaft		1
30	BB-6203ZZ	Ball Bearing	6203ZZ	2
31	JWBS18-131	Retaining Ring	R40	2
32	JWBS18-132	Upper Wheel		1
33	JWBS18DX-133	Tire		1
34	JWBS18-134	Flat Washer		1
35	JWBS18-135	Hex Nut	5/8-18UNF L.H.	1
36		Blade (<i>local purchase</i>)	137"	1
37	TS-0590061	Wing Nut	5/16-18	1
38	JWBS18-138	Lock Knob	5/16	1
39	JWBS18DX-139G	Upper Front Door		1
40	JET-165	JET Logo with 3M adhesive	165X68mm	1
41	JWBS18-141	Warning Label		1
42	JWBS18-142	Bolt		1
43	TS-0561011	Hex Nut	1/4-20	1
44	TS-081C052	Screw	#10-24x3/4	2
45	JWBS18-39A	Door Hinge Pin		2
46	JWBS18DX-146	Upper Wheel Bracket (Left Side)		1
47	JWBS18DX-147	Tracking Window		1
48	TS-081C032	Screw	#10-24x1/2	2
49	TS-1550031	Flat Washer	M5	2
50	TS-2361051	Lock Washer	M5	2
51	TS-0560071	Hex Nut	#10-24	2
53	JWBS18DX-153G	Scale Bracket		1
54	TS-081C022	Screw	#10-24x3/8	2

17.2.1 Lower Wheel and Motor Assembly

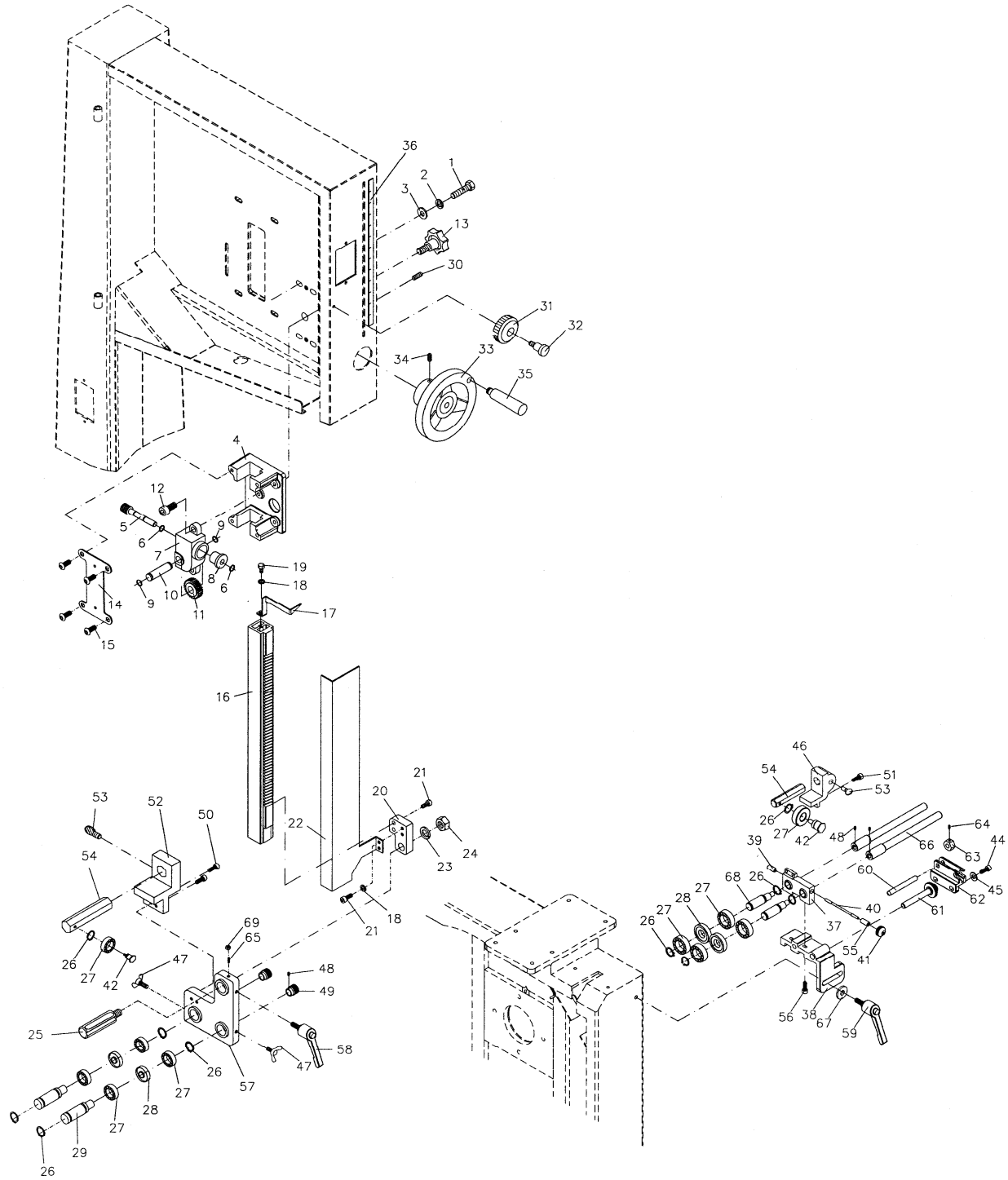


17.2.2 Parts List: Lower Wheel and Motor Assembly

Index No.	Part No.	Description	Size	Qty
1	JWBS18-201N	Bearing Base		1
2	JWBS20-62	Adjusting Bolt		4
3	TS-0720091	Lock Washer	3/8	5
4	TS-0060081	Hex Cap Screw	3/8-16x1-3/4	4
5	BB-6204ZZ	Ball Bearing	6204ZZ	1
6	VBS18MW-206	Spindle		1
7	VBS18MW-207	Key	7x7x65	1
8	VBS18MW-208	Spindle Pulley		1
9	VB-B48	V-Belt	B-48	1
10	JWBS18-210	Lower Wheel		1
11	JWBS18DX-133	Tire		1
12	TS-0680081	Flat Washer	5/8	1
13	JWBS18-135	Hex Nut	5/8-18UNF L.H.	1
14	JWBS18-214	Hex Nut	5/8-18UNF R.H.	1
15	JWBS18-215	Bearing Cover		1
16	TS-0720051	Lock Washer	#10	3
17	TS-081C022	Screw	#10-24x3/8	3
18	VBS18MW-218	Motor	1-1/2HP, 1PH, 115/230V	1
	JWBS18X-MFC	Motor Fan Cover (not shown)		1
	VBS18MW-218MF	Motor Fan (not shown)		1
	VBS18MW-218CS	Centrifugal Switch (not shown)		1
	VBS18MW-218SCC	Starting Capacitor Cover (not shown)		1
	VBS18MW-218RCC	Running Capacitor Cover (not shown)		1
	VBS18MW-218SC	Starting Capacitor (not shown)	200MFD, 125VAC	1
	VBS18MW-218RC	Running Capacitor (not shown)	40µF, 250VAC	1
	VBS18MW-218JB	Junction Box (not shown)		1
	VBS18MW-218JBC	Junction Box Cover (not shown)		1
19	VBS18MW-219	Gear Box Assembly		1
22	TS-0050051	Hex Cap Screw	1/4-20x1	2
23	TS-0720071	Lock Washer	1/4	2
24	TS-0680041	Flat Washer	3/8	3
25	VBS18MW-225	Motor Pulley		1
26	TS-0270031	Set Screw	5/16-18x3/8	2
27	JWBS18DX-227G	Lower Front Door		1
28	JWBS18-142	Bolt		1
29	TS-0561011	Hex Nut	1/4-20	1
30	JWBS20-2	Lock Knob		1
31	TS-081F052	Screw	1/4-20x3/4	1
32	JWBS20-8G	Dust Chute		1
33	TS-0680031	Flat Washer	5/16	6
34	TS-0051051	Hex Cap Screw	5/16-18x1	6
35	JWBS18-235	Plate		1
36	TS-081C032	Screw	#10-24x1/2	2
37	JWBS18-237	Strain Relief Bushing		2
38	TS-081C082	Screw	#10-24x1-1/2	2
39	TS-1550031	Flat Washer	M5	2
40	JWBS18-240	Brush		1
41	TS-2361051	Lock Washer	M5	2
42	TS-0560071	Hex Nut	#10-24	2
43	JWBS18-243	Motor Cord		1
44	JWBS18-244	Power Cord		1
45	BB-6205ZZ	Ball Bearing	6205ZZ	1
46	VBS18MW-246	ID Label		1
48	JWBS18-39A	Door Hinge Pin		2
50	JWBS18DX-250G	Shelf		1

Index No.	Part No.	Description	Size	Qty
51	TS-081C032	Screw	#10-24x1/2	2
52	TS-1550031	Flat Washer	M5	2
53	TS-0560071	Hex Nut	#10-24	2
54	JWBS18DX-254	Plastic Washer	5/16	1
55	TS-0720081	Lock Washer	5/16	6
56	TS-0561021	Hex Nut	5/16-18	2
57	VBS18MW-257G	Lower Chip Tray		1
58	TS-081F032	Pan Head Screw	1/4-20x1/2	2
59	VBS18MW-259	Handle		1
60	TS-0160021	Carriage Bolt	3/8-16x1-1/2	2
61	VBS18MW-261	Lock Handle		1
62	VBS18MW-262	Key	6x6x40	1
63	VBS18MW-263	Plug		1
64	VBS18MW-264	Handle		1
65	VBS18MW-265	Key	6x6x45	1
66	TS-0060091	Hex Cap Screw	3/8-16x2	1
67	TS-0640091	Nylon Lock Hex Nut	3/8-16	1

17.3.1 Blade Guide Assembly

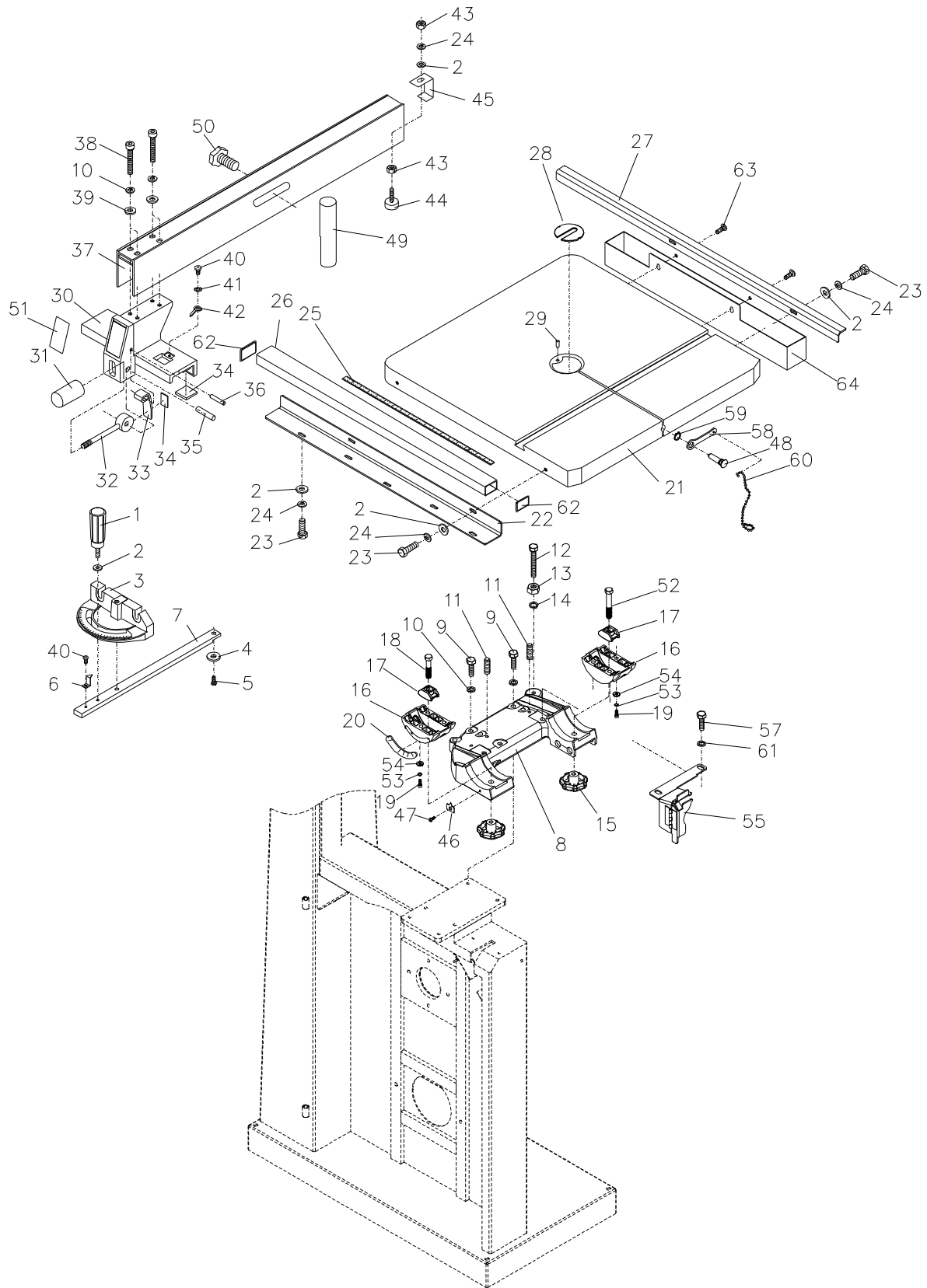


17.3.2 Parts List: Blade Guide Assembly

Index No.	Part No.	Description	Size	Qty
1.....	TS-0051051.....	Hex Cap Screw.....	5/16-18x1.....	4
2.....	TS-0720081.....	Lock Washer.....	5/16.....	4
3.....	TS-0680031.....	Flat Washer.....	5/16.....	8
4.....	JWBS18DX-304.....	Guide Bar Bracket.....		1
5.....	JWBS18-305.....	Worm.....		1
6.....	JWBS18-306.....	E-Ring.....	E-8.....	2
7.....	JWBS18-307.....	Gear Base.....		1
8.....	JWBS18-308.....	Bushing.....		1
9.....	JWBS18-309.....	C-Ring.....	S-12.....	2
10.....	JWBS18-310.....	Shaft.....		1
11.....	JWBS18-311.....	Gear.....		1
12.....	TS-0208071.....	Socket Head Cap Screw.....	5/16-18x1-1/4.....	2
13.....	JWBS18-313.....	Lock Knob.....	5/16.....	1
14.....	JWBS18DX-314.....	Plate.....		1
15.....	TS-0255021.....	Button Head Socket Screw.....	5/16-18x1/2.....	4
16.....	JWBS18DX-316.....	Guide Bar.....		1
17.....	JWBS18DX-317.....	Pointer.....		1
18.....	TS-0720071.....	Lock Washer.....	1/4.....	3
19.....	TS-0050011.....	Hex Cap Screw.....	1/4-20x1/2.....	1
20.....	JWBS18-320N.....	Guide Bracket.....		1
21.....	TS-0207021.....	Socket Head Cap Screw.....	1/4-20x1/2.....	4
22.....	JWBS18X-322R.....	Blade Guard.....		1
23.....	TS-0720111.....	Lock Washer.....	1/2.....	1
24.....	TS-0561051.....	Hex Nut.....	1/2-13.....	1
25.....	JWBS18DX-325.....	Locking Shaft.....		1
26.....	JWBS20-326.....	C-Ring.....		10
27.....	BB-6202ZZ.....	Ball Bearing.....	6202ZZ.....	10
28.....	JWBS20-328.....	Spacer.....		4
29.....	JWBS20-329.....	Shaft.....		2
30.....	TS-0270031.....	Set Screw.....	5/16-18x3/8.....	2
31.....	JWBS20-2.....	Lock Knob.....		1
32.....	TS-081F052.....	Screw.....	1/4-20x3/4.....	1
33.....	JWBS18-333.....	Hand Wheel.....		1
34.....	TS-0267041.....	Set Screw.....	1/4-20x3/8.....	1
35.....	JWBS20-103A.....	Handle.....		1
36.....	JWBS18DX-336.....	Cutting Height Scale.....		1
37.....	JWBS18DX-337.....	Bracket.....		1
38.....	JWBS18DX-338.....	Base.....		1
39.....	JWBS20-339.....	Threaded Lock Bushing.....		1
40.....	JWBS20-340.....	Bolt.....		1
41.....	JWBS18DX-341.....	Lock Knob.....		1
42.....	JWBS20-342.....	Screw.....		2
44.....	TS-0207041.....	Socket Head Cap Screw.....	1/4-20x3/4.....	2
45.....	TS-0680021.....	Flat Washer.....	1/4.....	2
46.....	JWBS20-360.....	Bracket.....		1
47.....	JWBS20-324.....	Wing Screw.....		2
48.....	TS-1521011.....	Set Screw.....	M4 x 4.....	8
49.....	JWBS20-349.....	Knob.....		2
50.....	TS-0207031.....	Socket Head Cap Screw.....	1/4-20x5/8.....	2
51.....	TS-0207021.....	Socket Head Cap Screw.....	1/4-20x1/2.....	2
52.....	JWBS20-352.....	Bracket.....		1
53.....	JWBS20-353.....	Thumb Screw.....	1/4-20x1/2.....	2
54.....	JWBS20-354.....	Bearing Support.....		2
55.....	JWBS20-355.....	Lock Bushing.....		1
56.....	TS-0206021.....	Socket Head Cap Screw.....	#10-24x1/2.....	2

Index No.	Part No.	Description	Size	Qty
57	JWBS18DX-357	Bearing Bracket		1
58	6295293	Locking Handle		1
59	JWBS18DX-359	Locking Handle		1
60	JWBS18DX-360	Shaft		1
61	JWBS18DX-361	Adjusting Screw		1
62	JWBS18DX-362	Adjusting Bracket		1
63	JWBS18DX-363	Nut		1
64	TS-0267021	Set Screw	1/4-20x1/4	1
65	JWBS18DX-365	Set Screw, Special		1
66	JWBS18DX-366	Adjustment Handle		2
67	TS-0680031	Flat Washer	5/16	1
68	JWBS20-329A	Lower Shaft		2
69	TS-0561011	Hex Nut	1/4-20	1

17.4.1 Table and Fence Assembly



17.4.2 Parts List: Table and Fence Assembly

Index No.	Part No.	Description	Size	Qty
1	JWBS18-401	Lock Handle		1
2	TS-0680021	Flat Washer	1/4	11
3	JWBS18-403	Miter Gauge Body		1
4	JWBS20-156	Guide Disc		1
5	JWBS18-405	Screw	M6x8	1
6	JWBS18-406	Pointer		1
7	JWBS18-407	Guide Bar		1
8	JWBS18DX-408	Trunnion Support Bracket		1
9	TS-0051071	Hex Cap Screw	5/16-18x1-1/2	4
10	TS-0720081	Lock Washer	5/16	8
11	TS-0270061	Set Screw	5/16-18x5/8	2
12	TS-0060111	Hex Cap Screw	3/8-16x2-1/2	1
13	TS-0561031	Hex Nut	3/8-16	1
14	TS-0720091	Lock Washer	3/8	1
15	JWBS18-415	Lock Knob		2
16	JWBS18X-416	Trunnion		2
17	JWBS18-417	Trunnion Clamp Shoe		2
18	TS-1491081	Hex Cap Screw	M10x50	1
19	TS-1503041	Socket Head Cap Screw	M6x16	6
20	JWBS18-420	Scale		1
21	VBS18MW-421	Table		1
22	JWBS18-422G	Front Rail		1
23	TS-0050021	Hex Cap Screw	1/4-20x5/8	9
24	TS-0720071	Lock Washer	1/4	10
25	JWBS18-425	Scale		1
26	JWBS18-426G	Guide Rail		1
27	VBS18MW-427G	Rear Rail		1
28	JWBS20-144	Table Insert		1
29	JWBS20-145	Roll Pin	3x10	1
30	JWBS18-430	Fence Body		1
31	JWBS18-431	Knob		1
32	JWBS18-432	Lock Handle		1
33	JWBS18-433W	Lock Plate		1
34	JWBS18-434	Pad		5
35	JWBS18-435	Pin		1
36	JWBS18-436	Pin		1
37	JWBS18-437EA	Fence		1
38	TS-0208041	Socket Head Cap Screw	5/16-18x3/4	4
39	TS-0680031	Flat Washer	5/16	4
40	TS-0810012	Screw	#10-24x1/4	2
41	TS-0733031	External Tooth Lock Washer	#10	1
42	JWBS18-442	Pointer		1
43	TS-0561011	Hex Nut	1/4-20	2
44	JWBS18-444	Sliding Pad		1
45	JWBS18-445	Rear Hook		1
46	JWBS18-446	Pointer		1
47	JWBS18-447	Screw	M5x8	1
48	JWBS18DX-448	Table Pin		1
49	JWBS18-449E	Resaw Post		1
50	JWBS18-450	Lock Knob		1
51	JWBS18-451	JET Fence Label		1
52	TS-2210651	Hex Cap Screw	M10x65	1
53	TS-1551041	Lock Washer	M6	6
54	TS-1550041	Flat Washer	M6	6
55	JWBS18DX-455G	Lower Blade Guard		1

Index No.	Part No.	Description	Size	Qty
57	TS-0051091	Hex Cap Screw	5/16-18x2	2
58	40-0260	Wrench		1
59	JWBS18DX-459	C-Ring	S-10	1
60	JWBS18DX-460	Link Chain		1
61	TS-0680031	Flat Washer	5/16	2
62	2013-285	End Cover		2
63	TS-081F032	Pan Head Screw	1/4-20x1/2	2
64	VBS18MW-464G	Upper Chip Tray		1
	JWBS18-MGCP	Miter Gauge Assembly		1
	VBS18MW-FCPA	Fence/Rails Assembly		1

18.0 Electrical Connections

