

## Multipurpose tool - F 013 US4 000 - US40

www.powertools-aftersaleservice.com

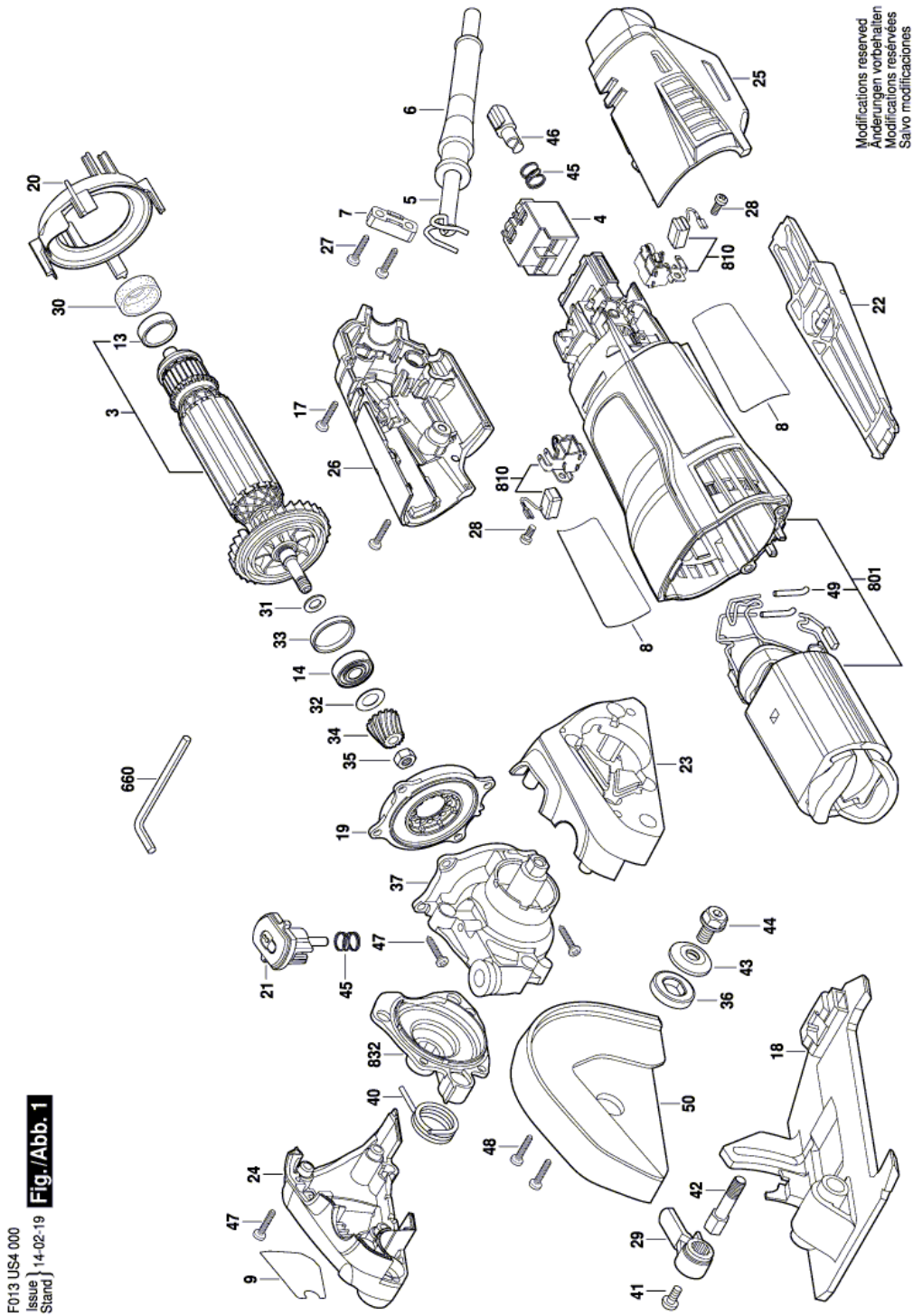


**BOSCH**

Item	Part Number	Description	Illustration	Price	Quantity	Price Group
3	2 610 015 927	Armature assembly 127V	1	-,-	1	34
4	1 607 200 146	Switch	1	-,-	1	22
5	2 604 460 122	Power supply cord USA/CDN 2,15m 2 x 0,82mm SJ 18/2	1	-,-	1	28
6	2 610 016 369	Cord guard	1	-,-	1	11
7	2 601 035 001	Cable Clip	1	-,-	1	11
8	2 610 032 014	Label	1	-,-	1	-
9	2 610 032 017	Warning Label	1	-,-	1	-
13	1 619 P00 456	Ball Bearing 7x19x6 MM	1	-,-	1	14
14	1 619 P00 455	Ball Bearing	1	-,-	1	15
17	2 615 294 035	Cross Recessed-Head Screw	1	-,-	4	11
18	2 610 027 899	Adjustable Foot	1	-,-	1	-
19	2 610 027 889	Baffle	1	-,-	1	-
20	2 610 012 049	Baffle	1	-,-	1	12
21	2 610 027 894	Push-Button Key	1	-,-	1	-
22	2 610 015 923	Switching Arm	1	-,-	1	20
23	2 610 027 900	Front Housing	1	-,-	1	-
24	2 610 027 901	Housing Cover	1	-,-	1	-
25	2 610 027 897	Housing Half	1	-,-	1	-
26	2 610 027 898	Housing Cover	1	-,-	1	-
27	2 603 490 022	Screw 4x16	1	-,-	2	10
28	1 619 P02 849	Torx Oval-Head Screw 3x8	1	-,-	2	10
29	2 610 031 621	Lever Foot	1	-,-	1	-
30	1 600 502 023	Intermediate Ring	1	-,-	1	12
31	1 619 P00 987	Washer	1	-,-	1	10
32	1 600 100 033	Cover Disc	1	-,-	1	13
33	1 600 206 025	Rubber Ring	1	-,-	1	12
34	1 619 P02 825	Bevel Gear	1	-,-	1	17
35	2 915 011 007	Hex Nut DIN 934-M6-8-A	1	-,-	1	10
36	2 610 031 679	Flange	1	-,-	1	-
37	2 610 027 890	Gear Housing	1	-,-	1	-
40	2 610 027 895	Torsion Spring	1	-,-	1	-
41	2 610 004 796	Screw	1	-,-	1	-
42	2 610 031 622	Lever Shaft	1	-,-	1	-

Item	Part Number	Description	Illustration	Price	Quantity	Price Group
43	2 610 031 680	Flange Plate	1	-,-	1	-
44	2 610 016 801	Collar bolt	1	-,-	1	12
45	2 610 016 072	Compression Spring	1	-,-	2	11
46	2 610 012 055	Locking Hook	1	-,-	1	12
47	2 603 490 023	Torx Oval-Head Screw 4x20	1	-,-	8	10
48	1 603 435 068	Thread-forming tap. Screw DIN 7500, M4x10, SR10.2	1	-,-	6	11
49	1 619 P02 866	Shrinkable Tube	1	-,-	2	10
50	2 610 027 902	Safety Guard	1	-,-	1	-
660	2 610 937 464	Hexagon Socket Wrench	1	-,-	1	11
801	2 610 033 778	Motor Housing	1	-,-	1	-
810	2 610 013 288	Carbon Brush	1	-,-	2	25
832	2 610 033 779	Bearing Flange	1	-,-	1	-

Illustration - Type E



Information subject to change without further notice.