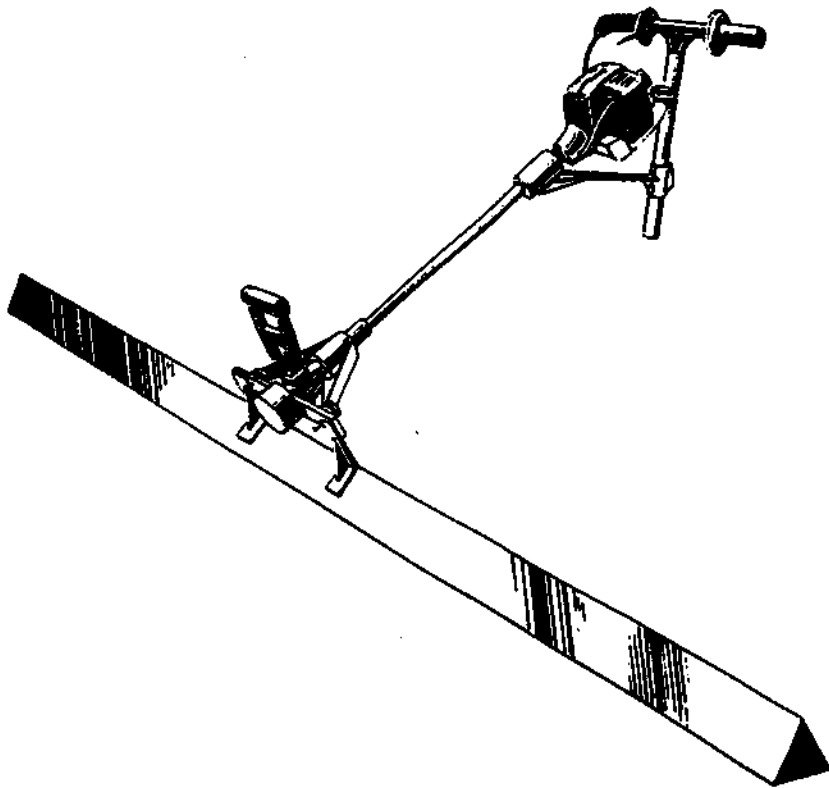




WEBER CONCRETE TOOLS

Weber Vibrating Wet Screed

Powered By **Tanaka**



Engine Owner's Manual

FIG.1 ENGINE

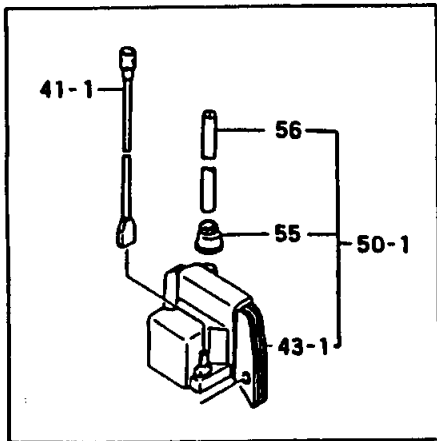
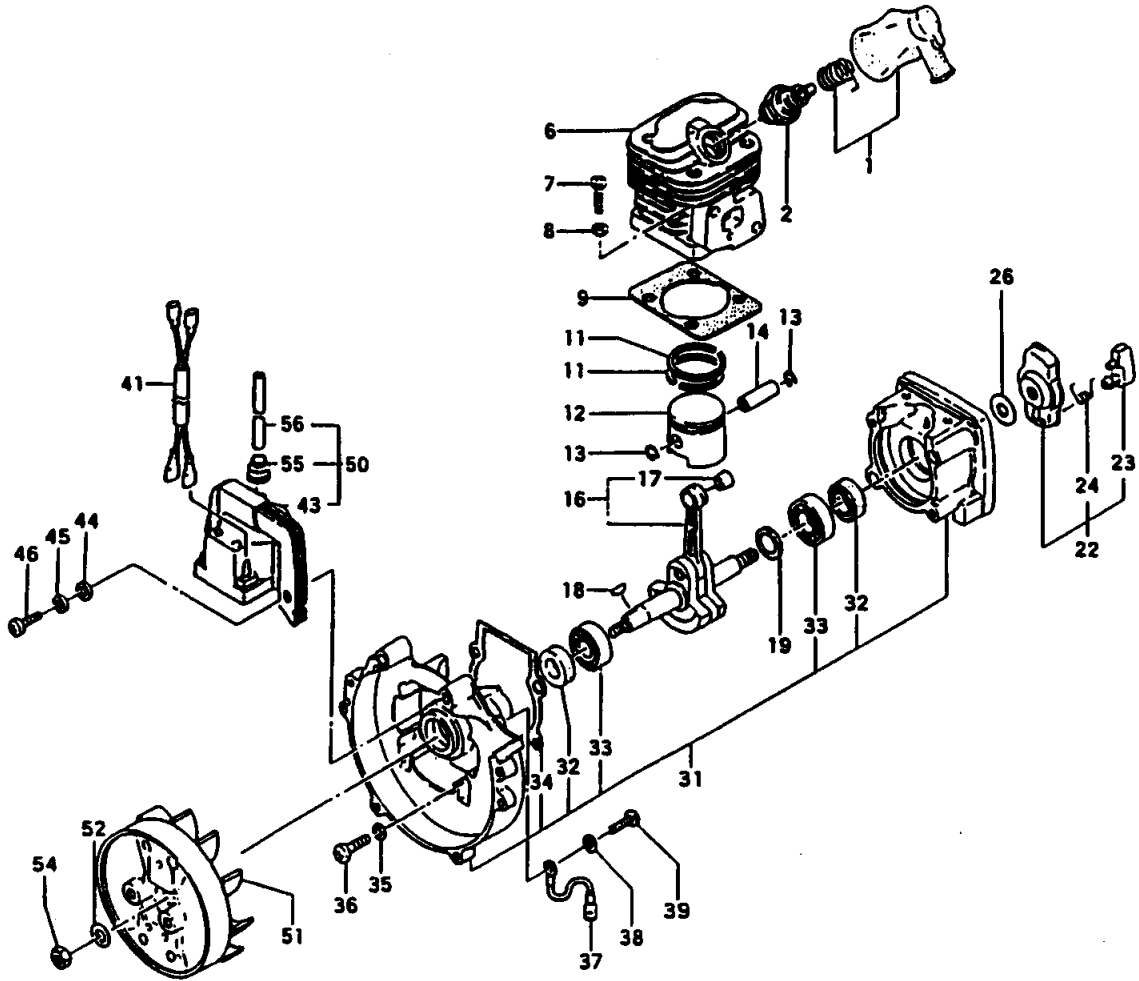


FIGURE 1

ENGINE PARTS LISTING

REF.	PART NO.	PART DESCRIPTION	Q	C	S	SERIAL NO.	REMARKS
1	157-0097A-900	CAP, SPARK PLUG, ASS'Y	1		B		
2	018-11660-21	PLUG, SPARK	1		B		
6	002-00980-21	CYLINDER	1		C		
7	990-11050-181	SCREW, 5X18	4		B		
8	992-10050-012	WASHER, S, 5	4		A		
9	017-00980-200	GASKET, CYLINDER	1		C		
11	041-01601-200	RING, PISTON	2		A		
12	031-01601-20	PISTON	1		C		
13	039-01620-200	CIRCLIP, PISTON PIN	2		A		
14	037-01601-200	PIN, PISTON	1		C		
16	046-0631A-81	CRANKSHAFT	1		D		
17	999-62081-225	BEARING, NEEDLE, F-810	1		C		
18	068-10100-200	KEY, WOODRUFF, 3X13X4.5	1		C		
19	330-00200-210	SHIM, 12.2X19X.10	1		D		Shims are "as needed" to obtain correct c/s side clearance.
19	330-00200-220	SHIM, 12.2X19X.15	1		D		
19	330-00200-230	SHIM, 12.2X19X.20	1		D		
19	330-00200-240	SHIM, 12.2X19X.30	1		D		
22	798-06500-900	PULLEY, STARTER, ASS'Y	1		C		
23	788-06500-20	PAWL, STARTER	1		C		
24	790-06097-200	SPRING, STARTER PAWL	1		C		
26	359-10112-203	WASHER, CLUTCH B	1		A		
31	072-00980-900	CRANKCASE, ASS'Y	1		D		
32	999-66122-240	SEAL, OIL, 12227	2		A		
33	999-61600-100	BEARING, BALL, #6001	2		B		
34	090-06097-200	GASKET, CRANKCASE	1		C		
35	992-10050-012	WASHER, S, 5	4		A		Includes bearings, seals & gasket
36	990-11050-251	SCREW, 5X25	4		D		
37	274-0631A-800	CORD, EARTH	1		D	-L307753	
38	992-10040-012	WASHER, S, 4	1		B	-L307753	
39	990-11040-081	SCREW, 4X8	1		C	-L307753	
41-1	178-0099M-80	CORD, STOP	1		D		
41	178-0099M-80	CORD, STOP	1		D		
43-1	167-20516-900	COIL, IGNITION	1		C	-L307753	
43	167-20521-80	COIL, IGNITION	1		D	L307754-	w/o high tension lead & cap.
44	992-00050-011	WASHER, SMALL, 5	2		C		
45	992-10050-012	WASHER, S, 5	2		A		
46	990-11050-201	SCREW, MX20	2		D		
50-1	167-20516-900	COIL, IGNITION	1		C	-L307753	
50	167-20521-90	COIL, IGNITION	1		D	L307754-	

* Indicates the part is included in a kit or assembly and is not available individually. Q=Quantity used C=Interchangeability S=Stocking code: A=Fast moving B=Med. fast C=Med. move D=Slow move E=N.L.A. F=Superseded or replaced by a new part

FIGURE 1 cont.

ENGINE PARTS LISTING

REF.	PART NO.	PART DESCRIPTION	Q	C	S	SERIAL NO.	REMARKS
51	155-20508-800	ROTOR,MAGNETO	1		D		
52	992-01070-011	WASHER,7	1		D		
54	066-00000-200	NUT,FLYWHEEL	1		D		
55	560-20517-200	CAP,RUBBER	1		C		
56	264-20516-200	LEAD,HIGH TENSION	1		C		

* Indicates the part is included in a kit or assembly and is not available individually. Q=Quan. used C=Interchangeability S=Stocking code: A=Fast moving B=Med. fast C=Med. move D=Slow move E=N.L.A. F=Superceded or replaced by a new part

FIG.2 ENGINE COMPONENTS

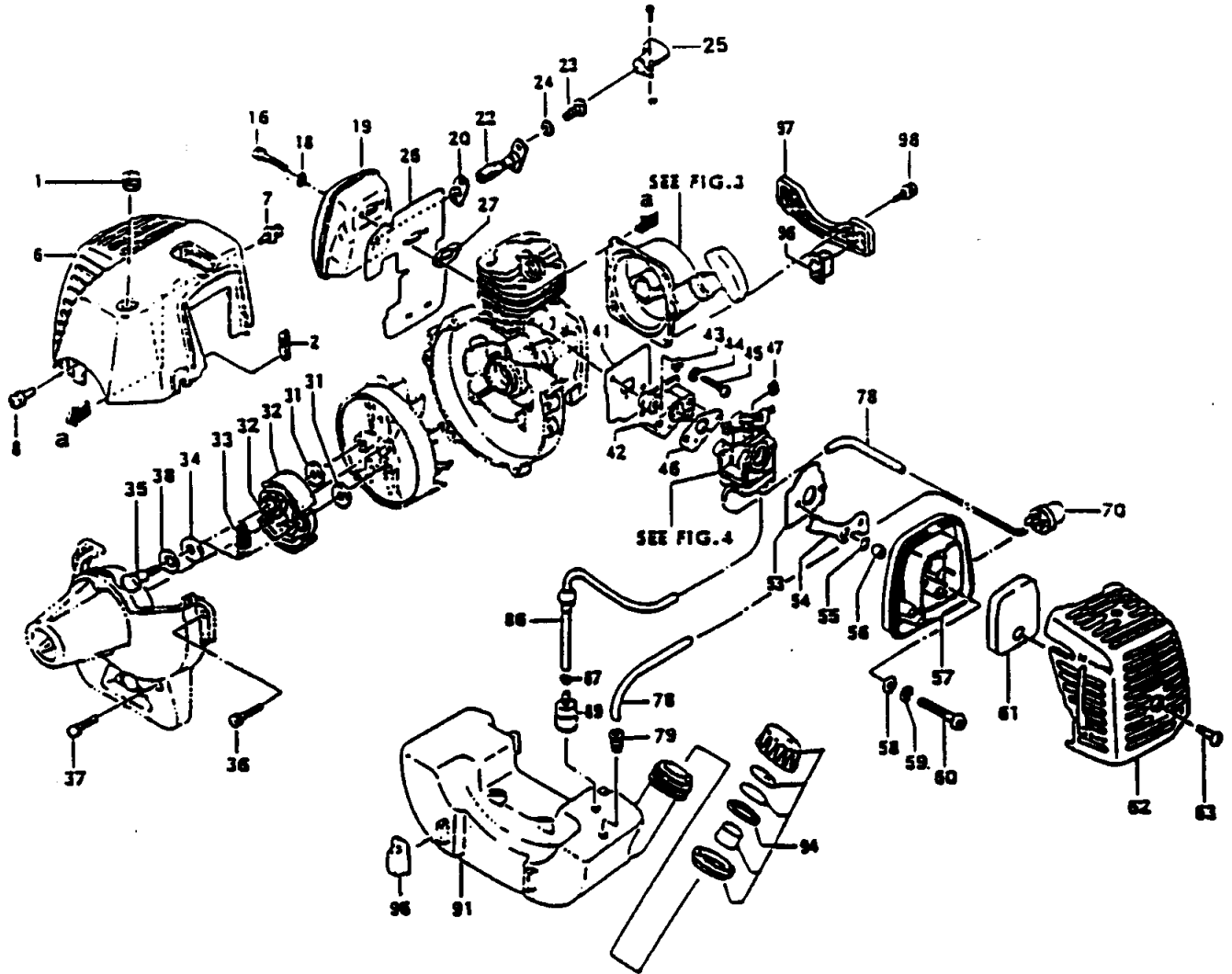


FIGURE 2

ENGINE PARTS LISTING

REF.	PART NO.	PART DESCRIPTION	Q	C	S	SERIAL NO.	REMARKS
1	202-01003-201	GROMMET,SECONDARY CORD	1		C		
2	203-0631A-200	GROMMET	1		D		
6	738-0631A-201	PROTECTOR,MUFFLER	1		C		
7	994-15040-222	SCREW,PS,4X22	2		A		
8	994-15040-122	SCREW,4X12/PS	2		C		
16	990-51050-503	BOLT,HEX,5X50	2		C		
18	992-01050-011	WASHER,5	2		A		
19	706-0637C-80	MUFFLER	1		D		
20	751-04200-201	GASKET,MUFFLER	1		C		
22	721-0099M-90	PIPE,TAIL	1		D		
23	994-34040-081	SCREW,4X8/S	2		C		
25	708-00501-90	DEFLECTOR,TAIL PIPE	1		B		
26	133-0631A-201	SHIELD,HEAT	1		B		
27	737-06100-21	GASKET,MUFFLER	1		B		
31	359-02103-200	WASHER,CLUTCH,B	2		B		
32	290-01620-800	SHOE,CLUTCH	2		A		
33	342-0630B-200	SPRING,CLUTCH	1		A		
34	348-0602R-200	PLATE,CLUTCH A	2		B		
35	357-0075T-200	BOLT,STEP	2		A		
36	994-14050-202	SCREW,5X20/S	2		C		
37	994-14050-352	SCREW,5X35/S	2		C		
38	992-05080-030	WASHER,8	2		C		
41	403-0631A-202	GASKET,INLET MANIFOLD	1		A		
42	404-0631A-800	INSULATOR,CARBURETOR	1		B		
43	992-00050-011	WASHER,SMALL,5	2		C		
44	992-10050-012	WASHER,S,5	2		A		
45	990-11050-221	SCREW,5X22	2		B		
46	402-0602K-21	GASKET,CARBURETOR	1		B		
47	991-01060-013	NUT,6	1		B	-N159150	
53	436-0162V-20	BASE,CLEANER	1		C		
54	528-00980-200	PLATE,CHOKE	1		D		
55	999-67008-012	O-RING,S-8	1		C		
56	470-0602N-200	COLLAR,CLEANER	1		C		
57	423-0637C-800	BODY,CLEANER	1		B		
58	992-00050-011	WASHER,SMALL,5	2		C		
59	992-10050-012	WASHER,S,5	2		A		
60	990-11050-571	SCREW,5X57	2		C		
61	446-0637C-200	ELEMENT,CLEANER	1		A		
62	452-0637C-21	COVER,CLEANER	1		C		

* Indicates the part is included in a kit or assembly and is not available individually. Q=Quan. used
C=Interchangeability S=Stocking code: A-Fast moving B=Med. fast C=Med. move D=Slow move
E=N.L.A. F=Superseded or replaced by a new part

FIGURE 2 cont.

ENGINE PARTS LISTING

REF.	PART NO.	PART DESCRIPTION	Q	C	S	SERIAL NO	REMARKS
63	380-0637C-200	BOLT,CLEANER	1		B		
70	442-25143-800	PUMP,PRIMING	1		B		
78	700-02504-080	PIPE,FUEL,2.5X4X80	1		C		
79	534-32710-200	GROMMET, FUEL PIPE	2		C		
86	223-0162V-900	PIPE,FUEL,ASS'Y	1		A		
87	680-00731-201	CLIP	1		B		
89	675-04042-80	FILTER,FUEL	1		A		
91	591-0637C-21	TANK,FUEL	1		C		
94	595-0650A-90	CAP,TANK	1		A		
96	655-00940-201	CUSHION,FUEL TANK	4		A		
97	653-0631A-200	BRACKET,TANK	1		C		
98	994-15040-222	SCREW,PS,4X22	2		A		

* Indicates the part is included in a kit or assembly and is not available individually. Q=Quan. used C=Interchangeability S=Stocking code: A-Fast moving B=Med. fast C=Med. move D=Slow move E=N.L.A. F=Superceded or replaced by a new part

FIG.3 RECOIL STARTER

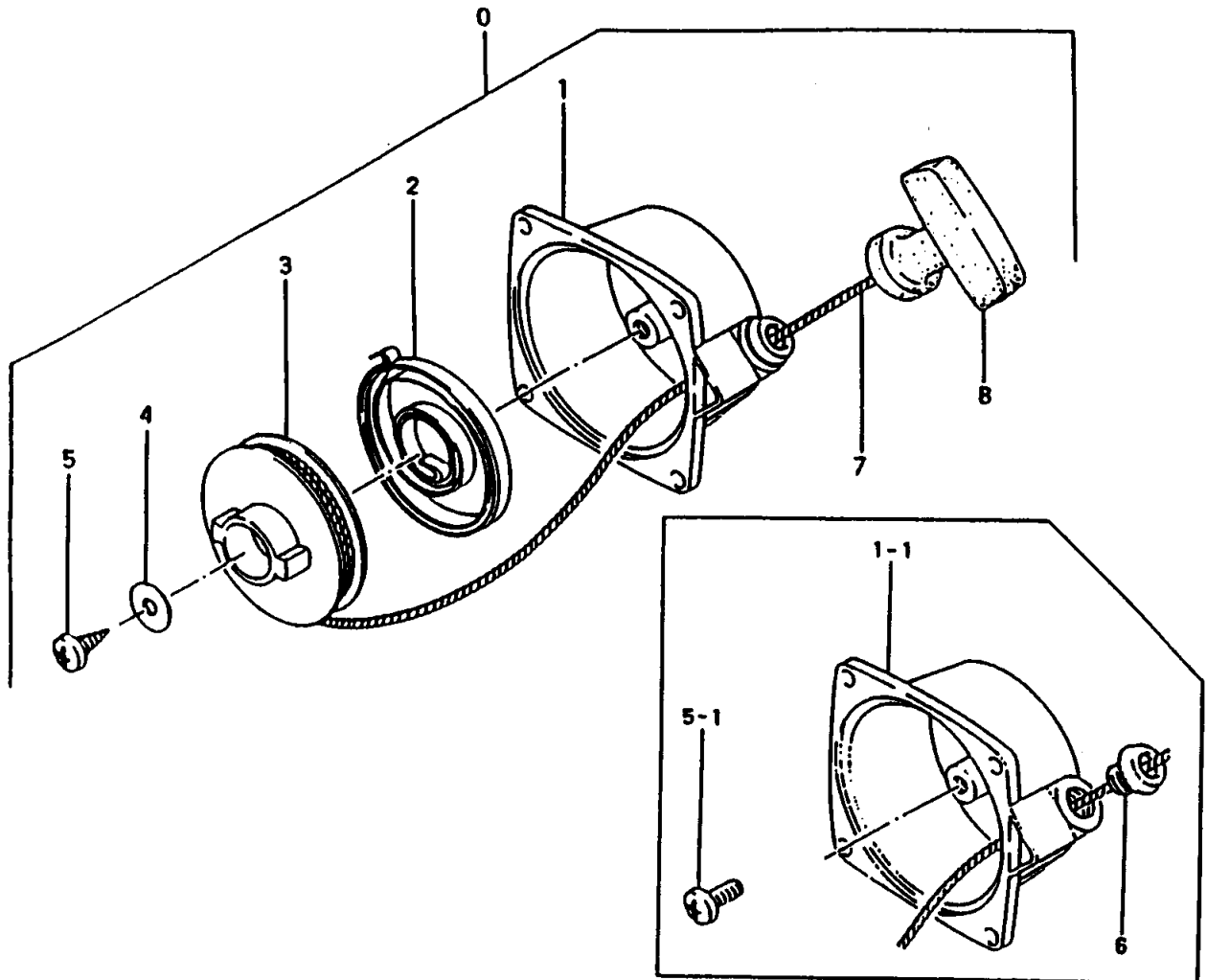


FIGURE 3

STARTER PARTS LISTING

REF.	PART NO.	PART DESCRIPTION	Q	C	S	SERIAL NO.	REMARKS
0	762-06097-902	STARTER,RECOIL ASSY	1		B		
1-1	772-06097-202	BODY,RECOIL STARTER	1		C	-L170133	
1	772-06097-80	BODY,RECOIL STARTER	1		C	L170134~	
2	780-06097-200	SPRING,RECOIL	1		A		
3	774-06097-200	PULLEY,STARTER	1		B		
4	801-06091-200	WASHER,ROPE REEL	1		C		
5-1	990-15050-121	SCREW,5X12	1		A	-L170133	
5	839-00025-200	SCREW,SET	1		D	L170134~	
6	782-06097-200	RECEIVER,ROPE	1		D	-L170133	
7	783-06097-200	ROPE,STARTER	1		C		
8	785-06097-200	HANDLE,STARTER	1		C		

FIG.4 CARBURETOR

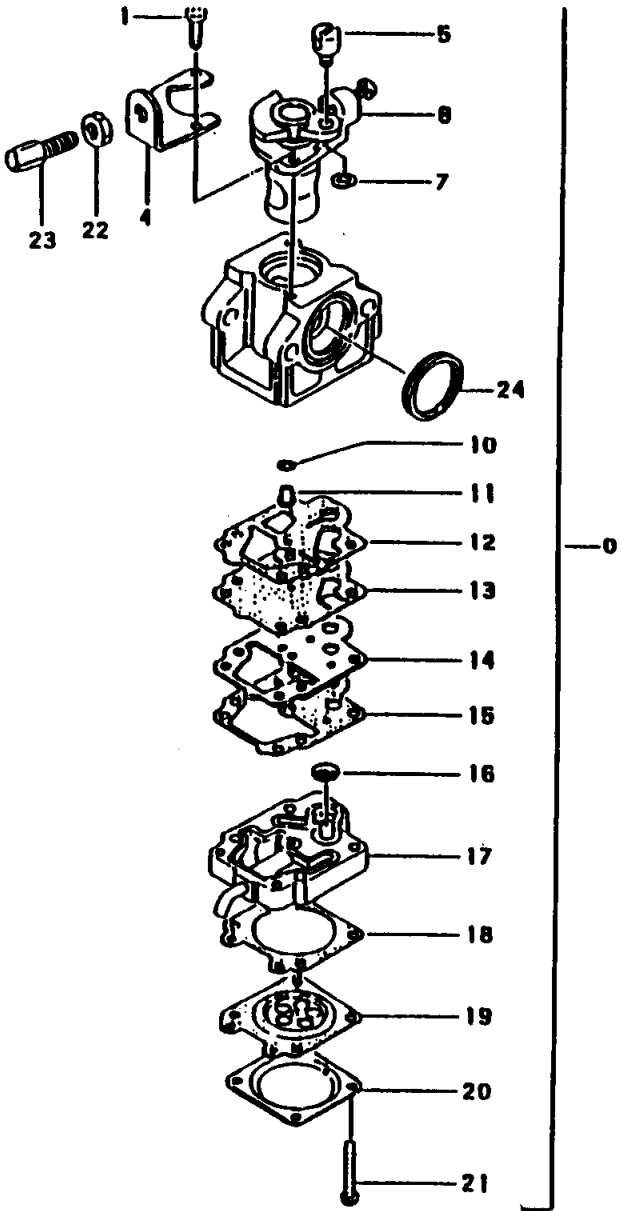


FIGURE 4

CARBURETOR PARTS LISTING

REF.	PART NO.	PART DESCRIPTION	Q	C	S	SERIAL NO	REMARKS
0	455-25144-900	CARBURETOR,ASS'Y	1		C	-N159150	* Contained in Carb. Repair Kit 650-25124-900 (Not available individually)
0	455-25160-90	CARBURETOR,ASS'Y	1		C	N159151-	
1	514-25100-200	SCREW,THROTTLE SET	2		D		
4	544-25120-200	STAY,ADJUST,CABLE	1		D		
5	539-25120-200	SWIVEL	1		D		
7	489-25100-200	RING,STOP	1		D		
8	488-25129-800	VALVE,THROTTLE	1		C		
10	550-25100-200	O-RING	1		C		
11	599-2000W-430	JET,MAIN,#43	1		D		
12	----	*GASKET,PUMP	1		B		
13	----	*DIAPHRAGM,PUMP	1		B		
14	523-25100-201	PLATE,PUMP	1		C		
15	522-25100-200	PLATE,CIRCUIT	1		C		
16	----	*SCREEN,INLET	1		C		
17	575-25130-800	BODY,PUMP	1		C		
18	----	*GASKET,DIAPHRAGM .53mm	1		A		
19	----	*DIAPHRAGM,METERING	1		A		
20	476-25004-200	COVER,DIAPHRAGM	1		D		
21	548-25101-200	SCREW,SET	4		D		
22	991-01060-013	NUT,6	1		B		
23	614-25137-200	ADJUSTER,CABLE	1		D		
24	431-0634C-200	PACKING,CLEANER	1		C		

* Indicates the part is included in a kit or assembly and is not available individually. Q=Quan. used C=Interchangeability S=Stocking code: A-Fast moving B=Med. fast C=Med. move D=Slow move E=N.L.A. F=Superceded or replaced by a new part

FIG.5 CLUTCH CASE

UNITS BEFORE SER. # P211650

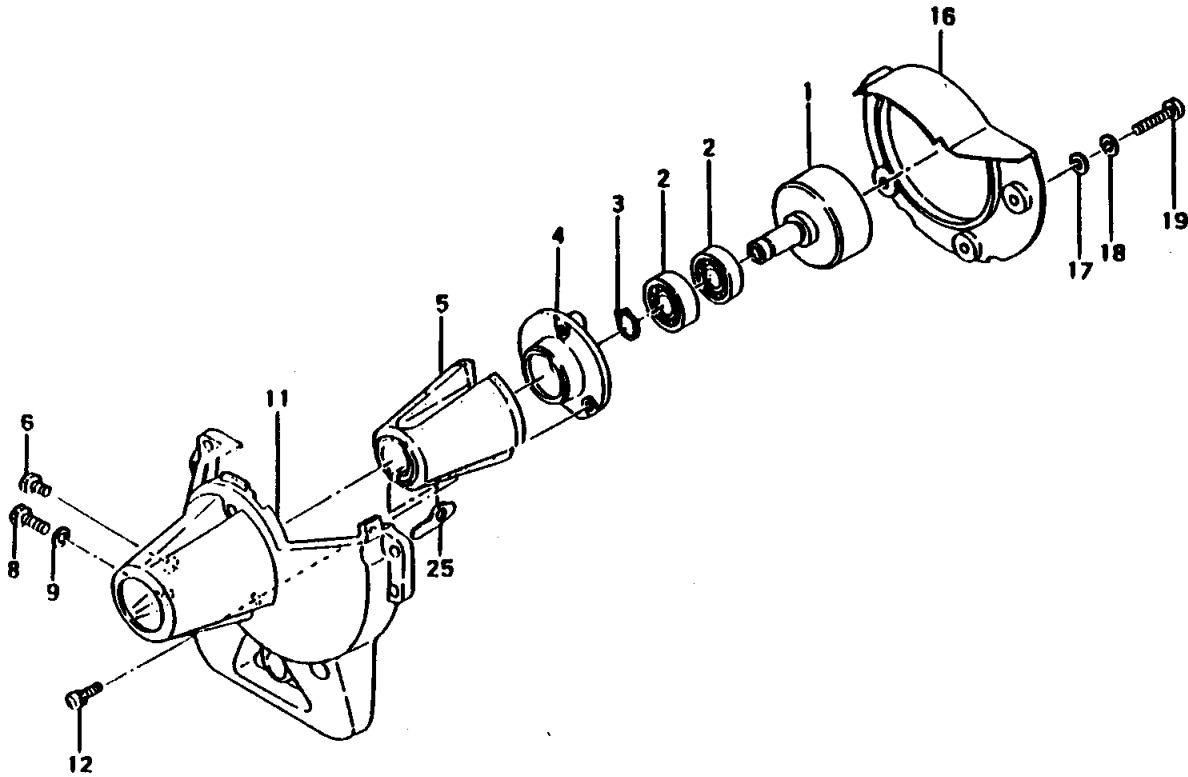


FIGURE 5

ENGINE PARTS LISTING

REF.	PART NO.	PART DESCRIPTION	Q	C	S	SERIAL NO.	REMARKS
1	289-0098T-80	DRUM,CLUTCH	1		A		Square Splined
1	289-00980-80	DRUM,CLUTCH	1		A		
2	999-61600-102	BEARING,BALL,#6001Z	2		B		
3	993-50012-002	RING,STOP,C-12 EX	1		A		
4	374-0631A-20	FLANGE,CLUTCH	1		B		
5	599-0631A-802	CUSHION	1		C		
6	990-51050-103	BOLT,HEX.HOLE,5X10	1		C		
8	990-51050-203	BOLT,HEX.HOLE,5X20	1		C		
9	992-10050-062	WASHER,S,5	1		D		
11	112-0631A-201	CASE,FAN	1		D		
12	994-14050-122	SCREW,S,5X12	3		B		
16	091-0631A-200	SHIELD,HEAT	1		D		
17	992-01040-011	WASHER,4	3		C		
18	992-10040-012	WASHER,S,4	3		B		
19	990-11040-121	SCREW,4X12	3		B		
25	249-0165A-21	SPACER	1		D		

FIG. 5 CLUTCH CASE

UNITS AFTER SER. # P211651

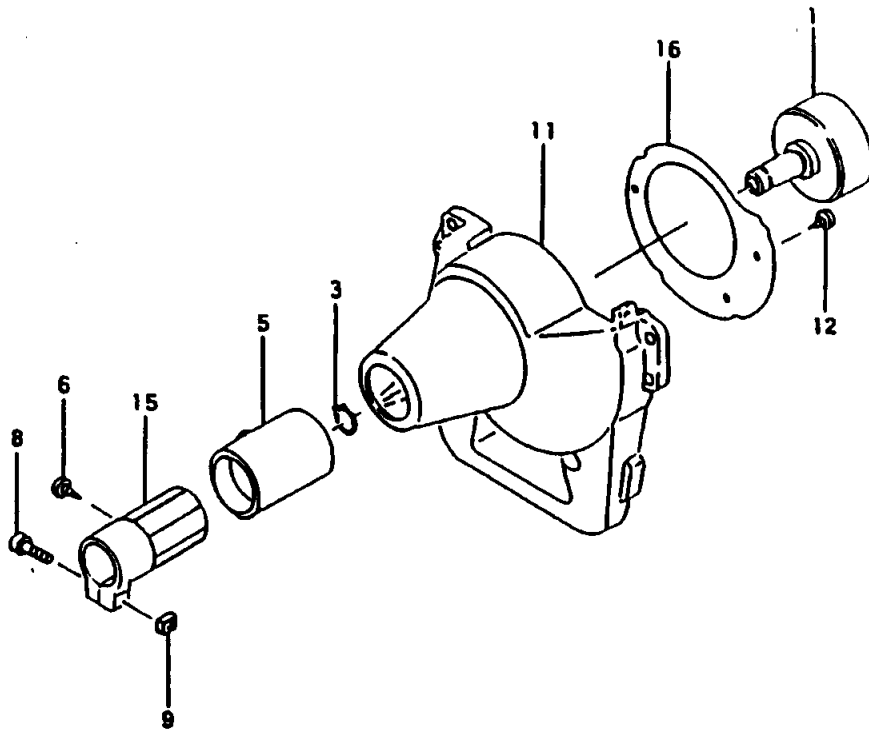


FIGURE 5

ENGINE PARTS LISTING

REF.	PART NO.	PART DESCRIPTION	Q	C	S	SERIAL NO	REMARKS
1	289-0098T-80	DRUM,CLUTCH	1		B		
5	599-00980-20	CUSHION,RUBBER	1		B	~R288067	
5	599-00980-21	CUSHION,RUBBER	1		C	R288068~	
6	990-73045-124	SCREW,TAPPING,4.5X12	1		D	~R288067	
6	990-74045-164	SCREW,TAPPING 4.5x16	1		C	R288068~	
8	990-54050-203	BOLT,HEX,5X20	1		C	~R288067	
8	990-54050-253	BOLT,HEX 5x25	1		C	R288068~	
9	991-91050-001	NUT,5	1		C		
11	112-00980-80	CASE,FAN	1		B	~R288067	Includes bearings
11	112-00980-81	CASE,FAN	1		C	R288068~	Includes bearings
12	990-72045-164	SCREW,TAPPING,4.5X16	3		C		
14	096-04300-20	COLLAR 6.3x18	1		C	R288068~	
15	360-00980-20	HOLDER,PIPE	1		C	~R288067	
15	360-00980-21	HOLDER,PIPE	1		C	R288068~	
16	091-00980-20	SHIELD,HEAT	1		C		

FIG. 6 THROTTLE

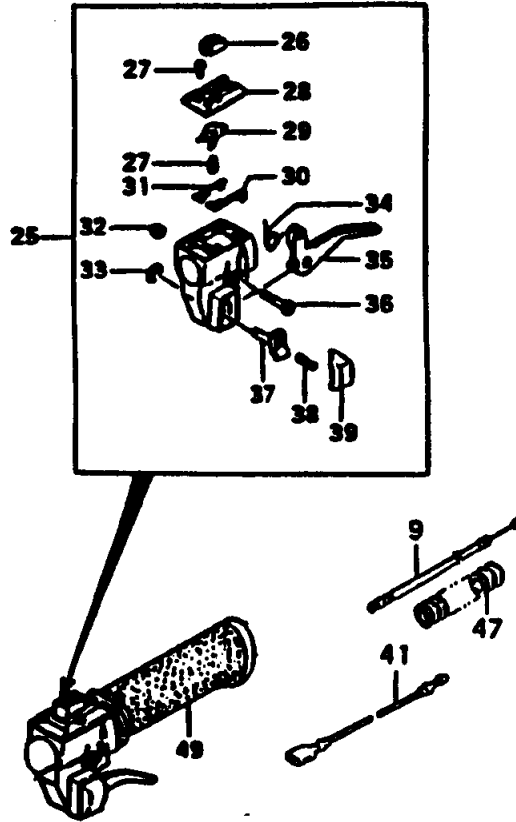
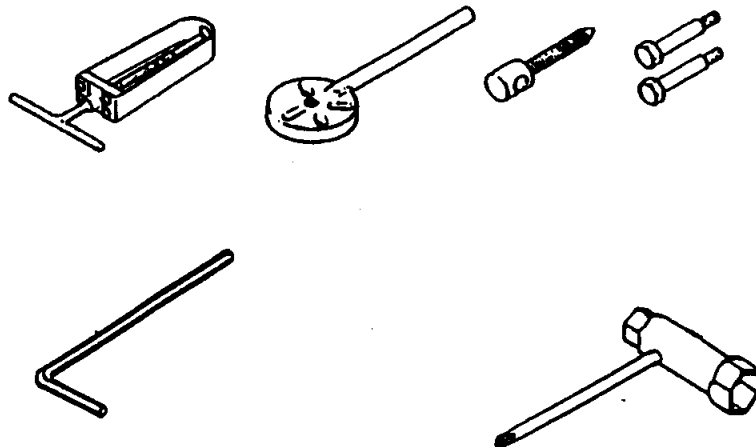


FIGURE 6

THROTTLE PARTS LISTING

REF.	PART NO.	PART DESCRIPTION	Q	C	S	SERIAL NO.	REMARKS
9	885-0099M-80	WIRE, THROTTLE	1		C		
25	870-37003-900	LEVER, THROTTLE ASS'Y	1		A		
26	162-37101-200	SWITCH, STOP	1		C		
27	993-42030-081	SCREW, TAPPING, 3X8	1		D		
28	259-37101-200	BASE, STOP SWITCH	1		C		
29	262-37101-200	SPRING, STOP SWITCH	1		D		
30	177-37101-200	TERMINAL, EARTH B	1		C		
31	176-37101-200	TERMINAL, EARTH A	1		D		
32	991-86050-000	NUT, LOCK, 5	1		D		
33	993-55060-001	RING, STOP, 6	1		D		
34	832-37101-200	SPRING, RETURN	1		C		
35	880-37101-200	ARM, THROTTLE	1		B		
36	994-31050-251	SCREW, S., 5X25	1		C		
37	853-37101-200	SHAFT, LOCK BUTTON	1		D		
38	958-37101-200	SPRING, LOCK, BUTTON	1		D		
39	956-37101-200	BUTTON, LOCK	1		D		
41	178-0099M-80	CORD, STOP	2		C		
47	164-10069-00	TUBE, PROTECTION	1		D		
49	504-37300-200	GRIP, SHAFT	1		D		

TOOLS



006-29326-000 Flywheel Remover
009-29323-500 Piston Pin Remover
813-20000-200 4mm Hex Wrench
826-20000-80 17 x 19mm Spanner

001-29000-000 Tachometer
070-2000W-500 Pressure Tester
070-2000W-501 Carb. Tool Kit