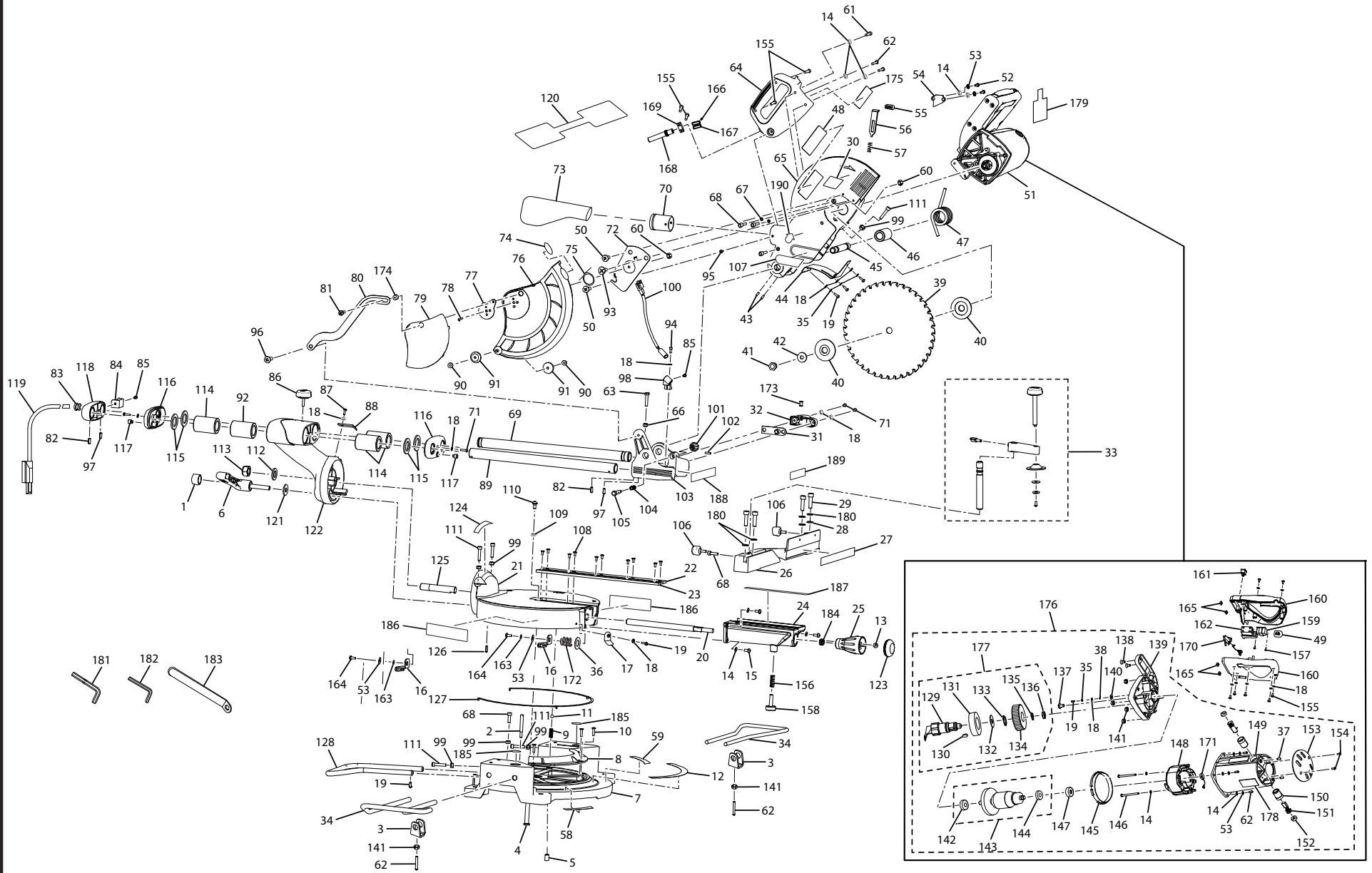


RYOBI 10 in. SLIDING MITER SAW w/LASER - MODEL NUMBER TSS100L



RYOBI 10 in. SLIDING MITER SAW w/LASER – MODEL NUMBER TSS100L

The model number will be found on a plate attached to the motor housing. Always mention the model number in all correspondence regarding your **MITER SAW** or when ordering repair parts.

PARTS LIST

KEY NO.	PART NUMBER	DESCRIPTION	QTY.	KEY NO.	PART NUMBER	DESCRIPTION	QTY.
1	089100118049	Cap.....	1	34	089100118041	Extension Bar (Set Of 2).....	1
2	089100113002	Screw (45°).....	1	35	089100113035	Spring Washer.....	6
3	089100118001	Clamp.....	2	36	089100118036	Washer (M14).....	1
4	089100113004	Pivot Shaft.....	1	37	089100118014	Screw (M4 x 8 mm Pan Hd.).....	2
5	089100118002	Screw (M10 x 10 mm Hex Soc. Hd.).....	1	38	089100113187	Ground Terminal.....	1
6	089100118702	Bevel Lock Assembly.....	1	39	089100113804	Saw Blade.....	1
7	089100118045	Base.....	1	40	089100113040	Blade Flange (45°).....	2
8	089100113008	Base Plate.....	1	41	089100113041	Bolt (M8 x 20 mm Hex Hd. LH).....	1
9	089100113009	Tension Spring.....	1	42	089100113042	Blade Washer.....	1
10	089100118003	Screw (M5 x 10 mm Flat Hd.).....	3	43	089100113043	Screw (M5 x 12 mm).....	2
11	089100113011	Ball.....	1	44	089100113044	Protection Plate.....	1
12	089100118908	Miter Angle Label.....	1	45	089100113045	Shaft A.....	1
13	089100118028	Lock Nut (M8).....	1	46	089100113046	Sleeve B.....	1
14	089100113014	Washer (M5).....	17	47	089100113047	Torsion Spring A.....	1
15	089100118005	Screw (M5 x 16 mm Pan Hd.).....	4	48	089100113900	Logo Label (Large).....	1
16	089100113016	Locking Plate.....	1	49	089100118031	Replacement Lens (Indicator Cap).....	1
17	089100113017	Miter Pointer.....	1	50	089100118030	Screw (M5 x 10 mm).....	2
18	089100113018	Washer (M4).....	20	51	089100118700	Motor Assembly.....	1
19	089100118006	Screw (M4 x 10 mm Pan Hd.).....	11	52	089100113052	Screw (M5 x 10 mm Pan Hd.).....	4
20	089100113020	Miter Handle Shaft.....	1	53	089100113053	Spring Washer.....	9
21	089100113021	Table.....	1	54	089100113054	Mounting Plate.....	1
22	089100113022	Right Throat Plate.....	1	55	089100113055	Blade Release Knob.....	1
23	089100113023	Left Throat Plate.....	1	56	089100113056	Blade Release Plate.....	1
24	089100113024	Extension Nose.....	1	57	089100113057	Compression Spring, for Blade Release Plate.....	1
25	089100113025	Miter Lock Knob.....	1	58	089100118910	Warning Label (L).....	1
26	089100113026	Fence.....	1	59	089100118913	Warning Label (R).....	1
27	089100118904	Fence Scale Label.....	1	60	089100113060	Lock Nut (M5), for Safety Knob.....	2
28	089100113028	Washer.....	4	61	089100113061	Screw (M5 x 25 mm Pan Hd.).....	2
29	089100113029	Screw (M8 x 25 mm Hex Soc. Hd.).....	4	62	089100113062	Screw (M5 x 30 mm Pan Hd.).....	6
30	089100118901	Upper Guard Warning Label.....	1	63	089100118029	Bolt (M8 x 30 mm Hex. Hd.).....	1
31	089100113031	Inner Plate (Cable Bracket A).....	1	64	089100113064	Carry Handle Assembly.....	1
32	089100113032	Cable Bracket A.....	1	65	089100113065	Upper Blade Guard.....	1
33	089100113800	Work Clamp Assembly (A).....	1	66	089100118028	Hex Nut (M8).....	1

RYOBI 10 in. SLIDING MITER SAW w/LASER – MODEL NUMBER TSS100L

The model number will be found on a plate attached to the motor housing. Always mention the model number in all correspondence regarding your **MITER SAW** or when ordering repair parts.

PARTS LIST

KEY NO.	PART NUMBER	DESCRIPTION	QTY.	KEY NO.	PART NUMBER	DESCRIPTION	QTY.
67	089100113067	Spring Washer	3	100	089100118701	Laser Assembly	1
68	089100113068	Screw (M6 x 20 mm Hex Soc. Hd.)	5	101	089100113101	Lock Down Pin Button	1
69	089100118027	Tube	1	102	089100113102	Elastic Pin	2
70	089100113070	Dust Adaptor	1	103	089100113103	Blade Guard Bracket	1
71	089100118026	Screw (M4 x 12 mm Pan Hd.)	4	104	089100113104	Spring	1
72	089100113072	Pivot Plate	1	105	089100113105	Lock Down Pin (45°)	1
73	089100113805	Dust Bag	1	106	089100113106	Lock Knob B (Work Clamp Assembly)	2
74	089100113905	No Hands Label	1	107	089100113904	Exactline Label	1
75	089100113075	Torsion Spring B	1	108	089100113108	Screw (M4 x 10 mm Flat Hd.)	12
76	089100113076	Lower Blade Guard	1	109	089100113109	Washer	1
77	089100113077	Fix Plate (Lower Blade Guard)	1	110	089100113110	Screw (M6)	1
78	089100118007	Carriage Bolt (M5 x 14 mm)	1	111	089100118009	Screw (M6 x 35 mm Hex Soc. Hd.)	5
79	089100113079	Blade Guard Plate	1	112	089100113112	Washer	1
80	089100113080	Linkage Arm	1	113	089100113113	Lock Nut (M16)	1
81	089100118008	Screw A (M6), for Link Plate	1	114	089100113114	Sleeve Bearing (LM25UU)	3
82	089100113082	Elastic Pin (M5 x 10 mm)	2	115	089100113115	Washer	4
83	089100113083	Cord Protection Tube A Grommet	1	116	089100113116	Bearing Cover	2
84	089100113084	Cable Bracket B	1	117	089100113117	Absorbing Vibration Pin	2
85	089100113085	Screw (M4 x 8 mm Hex Soc. Hd.)	2	118	089100113118	Connection Backlash	1
86	089100113086	Slide Lock Knob, for Slide Bar	1	119	089100118040	Power Cord	1
87	089100113087	Screw (M4 x 8 mm Pan Hd.)	1	120	089100108072	Hang Tag Label	1
88	089100113088	Bevel Pointer	1	121	089100113121	Washer	1
89	089100113089	Sliding Bar	2	122	089100113122	Arm Support Bracket	1
90	089100113090	Lock Ring (65Mn)	2	123	089100118023	Miter Handle Cap	1
91	089100113091	Roller	2	124	089100118905	Bevel Scale Label	1
92	089100118025	Sleeve Bearing	1	125	089100113125	Connection Shaft	1
93	089100113093	Screw (M5 Flat Hd.)	1	126	089100113126	Screw (M6 x 20 mm Hex Soc. Hd.)	1
94	089100118032	Screw (M4x12 mm Hexagon Socket)	1	127	089100113127	Spacer	3
95	089100113095	Screw (M4 x 50 mm)	1	128	089100118044	Support Wing	1
96	089100118015	Screw B (M6), for Link Plate	1	129	089100113129	Output Shaft (45°)	1
97	089100113097	Screw (M6 x 8 mm Flat Hd.)	2	130	089100113130	Key (M5 x 10 mm)	1
98	089100113098	Laser Bracket	1	131	089100113131	Ball Bearing (6304-2RZ)	1
99	089100113099	Hex Nut (M6)	6	132	089100113132	Absorbing Vibration Washer	1

RYOBI 10 in. SLIDING MITER SAW w/LASER – MODEL NUMBER TSS100L

The model number will be found on a plate attached to the motor housing. Always mention the model number in all correspondence regarding your **MITER SAW** or when ordering repair parts.

PARTS LIST

KEY NO.	PART NUMBER	DESCRIPTION	QTY.	KEY NO.	PART NUMBER	DESCRIPTION	QTY.
133	089100113133	Retaining Ring	1	165	089100113165	Square Nut (M5)	4
134	089100113134	Gear	1	166	089100118012	Screw (M2.9 x 16 mm)	1
135	089100113135	Retaining Ring	1	167	089100113167	Terminal Block	1
136	089100113136	Output Shaft Bushing	1	168	089100113168	Bend Relief	1
137	089100113137	Screw (M8)	1	169	089100113169	Power Cord Clamp	1
138	089100113138	Screw (M5 x 12 mm Flat Hd.)	4	170	089100113170	Male Connection w/Wire, for Laser Light	1
139	089100113139	Front Motor Cover	1	171	089100113171	Magnetic Ring w/Winding	2
140	089100113140	Toothed Washer	1	172	089100118038	Spring	1
141	089100113141	Hex Nut (M5)	6	173	089100113173	Cord Protection Tube B Grommet	1
142	089100113142	Ball Bearing (6201-2RZ)	1	174	089100118035	Spacer	1
143	089100113734	Armature Assembly (Inc. Key Nos. 142 and 144)	1	175	089100113901	Logo Label (Small)	1
144	089100113144	Ball Bearing (6001-2RZ)	1	176	089100118700	Motor Assembly (Inc. Key Nos. 14, 18-19, 35, 37-38, 53, 62, 137-141, 143, 145-154 and 193)	1
145	089100113145	Baffle Plate	1	177	089100113733	Output Spindle Assembly (Inc. Key Nos. 129-136)	1
146	089100113146	Screw (M5 x 70 mm)	2	178	089100118903	Data Label	1
147	089100113147	Bearing Bushing	1	179	089100108072	Hang Tag	1
148	089100113148	Field Assembly	1	180	089100113180	Spring Washer (M8)	4
149	089100113149	Motor Housing	1	181	089100113806	Hex Key (5 mm)	1
150	089100113150	Brush Holder	2	182	089100113807	Hex Key (6 mm)	1
151	089100113151	Brush Assembly	2	183	089100113808	Wrench	1
152	089100113152	Brush Cap	2	184	089100118016	Adjustment Washer	1
153	089100113153	Motor End Cover	1	185	089100118900	No Hands Label	2
154	089100118010	Screw (M4.8 x 6.5 mm)	3	186	089100118907	Operation Label	2
155	089100118011	Screw (M4.2 x 13 mm)	11	187	089100118909	Miter Lock Label	1
156	089100118022	Adjustment Spring	1	188	089100118911	Laser Warning Label	1
157	089100113157	Screw (M3.2 x 8 mm)	2	189	089100118906	Sliding Fence Instruction Label	1
158	089100118021	Adjustable Support Foot	1	190	089100118902	Loosen Bolt Indicator Label	1
159	089100113159	Transformer	1				
160	089100113736	Handle Assembly	1				
161	089100113161	Laser Switch	1				
162	089100118042	Switch	1				
163	089100118020	Lock Washer (M5)	1				
164	089100118019	Screw (M5 x 10 mm)	1				

RYOBI 10 in. SLIDING MITER SAW w/LASER – MODEL NUMBER TSS100L

The model number will be found on a plate attached to the motor housing. Always mention the model number in all correspondence regarding your **MITER SAW** or when ordering repair parts.

PARTS LIST

KEY NO.	PART NUMBER	DESCRIPTION	QTY.	KEY NO.	PART NUMBER	DESCRIPTION	QTY.
		Not Shown Items:		194	089100118706	90-91, 93, 96 and 174) 1 Upper Guard Assembly (Inc. Key Nos. 14, 18-19, 30, 35, 40-48, 52-57, 60-62, 64-65, 67-68, 70, 83, 95, 99, 107, 119, 155, 166-169 and 190) 1	
191	089100113710	Table Assembly (Inc. Key Nos. 12-25, 53, 99, 108, 111, 123-126, 156, 158, 163-164, 184 and 186-187) 1	1	195	089100113750	Slide Bar Guard Support Bracket Assembly (Inc. Key Nos. 18-19, 31-32, 63, 66, 69, 71, 82-89, 92, 94, 97-99, 101-105, 112-122, and 188)..... 1	1
192	089100118705	Fence Assembly (Inc. Key Nos. 26-30, 68, 106, 180 and 189)..... 1	1	196	089100118703	Base Assembly (Not Shown) (Inc. Key Nos. 2, 4-5, 7-8, 10-12, 58-59, 68, 99, 127 and 185)..... 1	1
193	089100113720	Lower Blade Guard Assembly (Inc. Key Nos. 60, 72, 74-81,			987000212 3-1-10 (Rev:09)	Operator's Manual	