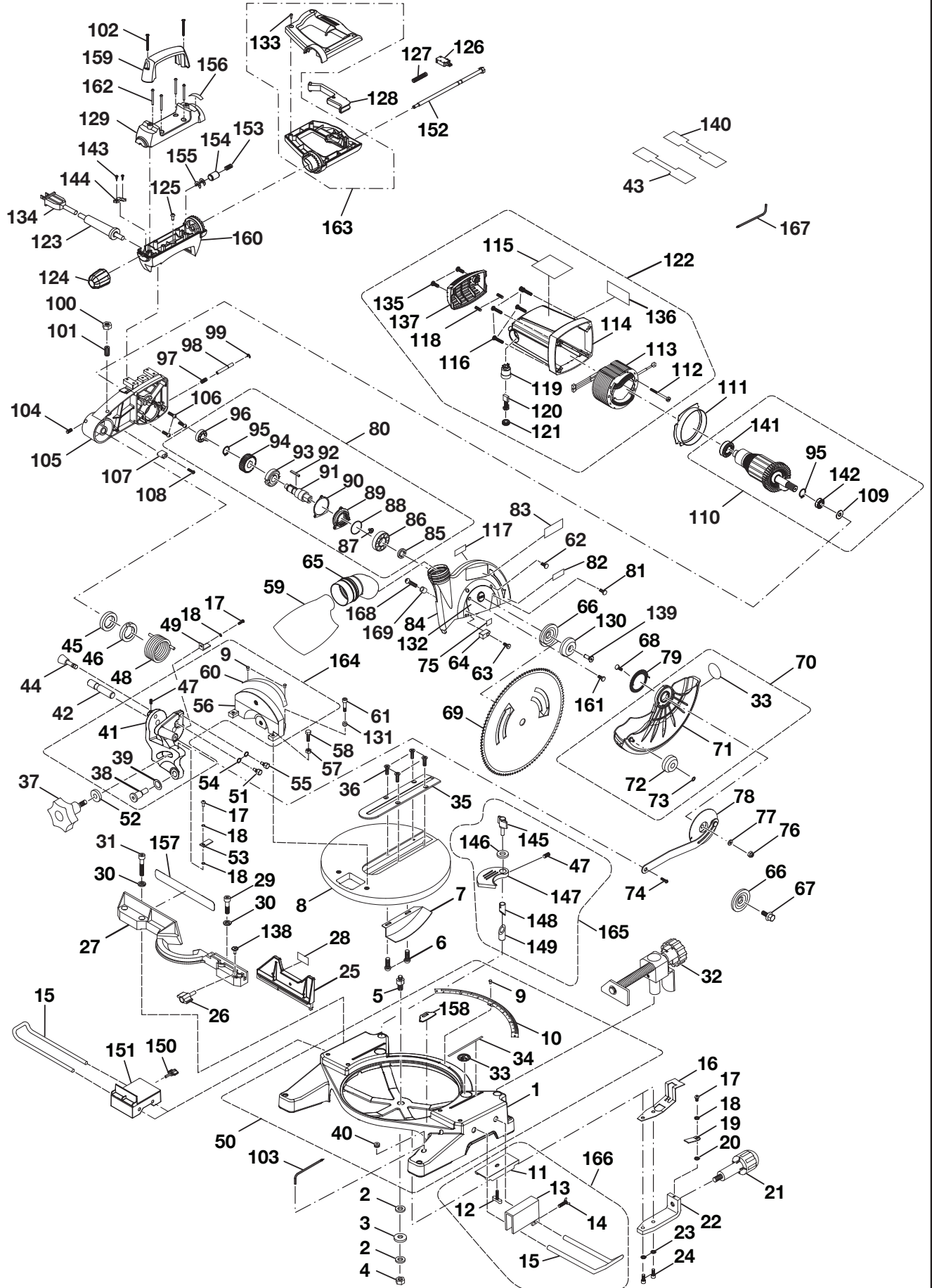


RYOBI 10 in. MITER SAW W/LASER - MODEL NUMBERS TS1355L and TS1355LA



# RYOBI 10 in. MITER SAW W/LASER – MODEL NUMBERS TS1355L and TS1355LA

The model number will be found on a plate attached to the motor housing. Always mention the model number in all correspondence regarding your **MITER SAW** or when ordering repair parts.

## PARTS LIST

KEY NO.	PART NUMBER	DESCRIPTION	QTY.
1	089100210001	BASE.....	1
2	A35031025153	WASHER (M10).....	2
3	A36131020100	SPRING WASHER (M10).....	1
4	A31703010008	LOCK NUT (M10).....	1
5	518106300	TABLE SPINDLE .....	1
6	A19003040093	SCREW (M4 X 9 mm PAN HD.).....	2
7	089100208007	TABLE HOLD DOWN .....	1
8	089100210032	TABLE .....	1
9	A49010020056	RIVET (Ø2.5 X 5 mm) .....	6
10	089100208010	MITER SCALE.....	1
11	089100110232	FIXED PLATE.....	2
12	555516000	CLAMP BRACKET SCREW .....	2
13	558507200	STOP BLOCK .....	1
14	558512100	WING BOLT.....	1
15	089100210002	TABLE EXTENSION.....	2
16	518105400	LOCK PLATE.....	1
17	A10003040107	SCREW (M4 X 10 mm PAN HD.).....	3
18	A35030410018	FLAT WASHER (M4).....	4
19	578105102	MITER INDICATOR .....	1
20	A35030511158	FLAT WASHER (M5).....	1
21	089100210036	TABLE LOCK HANDLE .....	1
22	518104200	CONTROL ARM.....	1
23	A36030612157	SPRING WASHER (M6) .....	2
24	A07003060257	CAP SCREW (M6 X 25 mm).....	2
25	089100208025	SLIDE FENCE .....	1
26	089100211001	KNOB .....	1
27	089100210003	FENCE .....	1
28	089100208028	WARNING LABEL (SLIDE FENCE).....	1
29	A07003080253	SCREW (M8 X 25 mm SOC. HD.).....	2
30	A36030814204	SPRING WASHER (M8).....	4
31	A07103080457	CAP SCREW (M8 X 45 mm).....	2
32	518A08130	MITER CLAMP ASSEMBLY .....	1
33	089100207097	WARNING LABEL (NO HANDS).....	3
34	588071004	LINE WARNING LABEL .....	2
35	089100207036	THROAT PLATE.....	1
36	A16003040083	SCREW (M4 X 8 mm FLAT HD.).....	4
37	089100207024	BEVEL HANDLE.....	1
38	589010200	PIVOT SHAFT .....	1
39	589011308	WASHER.....	1
40	503118000	GROMMET.....	1
41	089100210011	REAR TABLE MOUNT .....	1
42	089100208042	PIVOT ARM.....	1
43	589504000	HANG TAG (FRENCH/SPANISH) .....	1
44	089100211002	ARM LOCK PIN ASSEMBLY .....	1
45	511348000	REAR SPRING SPACER .....	1

# RYOBI 10 in. MITER SAW W/LASER – MODEL NUMBERS TS1355L and TS1355LA

The model number will be found on a plate attached to the motor housing. Always mention the model number in all correspondence regarding your **MITER SAW** or when ordering repair parts.

## PARTS LIST

KEY NO.	PART NUMBER	DESCRIPTION	QTY.
46	511349000	FRONT SPRING SPACER.....	1
47	A18003040080	SET SCREW (M4 X 8 mm) .....	2
48	089100208048	TENSION SPRING .....	1
49	089100208049	BEVEL POINTER (L).....	1
50	089100210700	BASE ASSEMBLY (INC. KEY NOS. 1, 9, 10, 33, 34, 40 and 158) .....	1
51	511208000	SPRING FIXED BOLT .....	1
52	A35031030300	FLAT WASHER (M10).....	1
53	089100208053	BEVEL POINTER.....	1
54	A36031015158	SPRING WASHER (M10).....	2
55	588058200	LOCK BOLT .....	1
56	089100207050	PIVOT SUPPORT .....	1
57	A30003006003	HEX NUT (M6).....	2
58	578206000	HEX BOLT (M6 X 16 mm).....	2
59	089100208059	DUST BAG .....	1
60	089100208061	BEVEL SCALE.....	1
61	A07003100256	CAP SCREW (M10 X 25 mm).....	2
62	A10003050106	SCREW (M5 X 10 mm PAN HD.).....	4
63	A10003040152	SCREW (M4 X 15 mm PAN HD.).....	1
64	589032207	STOPPER.....	1
65	089100208065	ELBOW .....	1
66	588035105	FLANGE .....	2
67	503412000	ARBOR SCREW.....	1
68	581410003	SCREW .....	1
69	089100208070	BLADE (36 TOOTH).....	1
70	089100208702	LOWER GUARD ASSEMBLY (INC. KEY NOS. 71-73 AND 33).....	1
71	089100208072	LOWER GUARD.....	1
72	089100207103	ROLLER .....	1
73	538417000	RETAINING RING.....	1
74	589015108	SHOULDER SCREW.....	1
75	089100207051	BLADE BOLT DIRECTIONAL LABEL .....	1
76	A31703006004	LOCK NUT (M6) .....	1
77	A35010616105	FLAT WASHER (M6).....	1
78	089100208079	RETAINING SPRING HOLDER.....	1
79	589021300	RETRACT SPRING.....	1
80	089100210702	OUTPUT SPINDLE ASSEMBLY (INC. KEY NOS. 85-96) .....	1
81	A19001040091	SCREW (M4 X 9 mm PAN HD.).....	1
82	580411000	UPPER GUARD WARNING LABEL.....	1
83	089100207044	UPPER GUARD LOGO LABEL .....	1
84	089100210711	UPPER SAFETY GUARD WITH PIVOT GUARD AND RIVET (INC. KEY NOS. 75 & 82) .....	1
85	511414000	SPACER .....	1
86	A50060030041	BALL BEARING (6003Z/RS).....	1
87	511354000	SCREW (M5 X 6 mm PAN HD.).....	2

# RYOBI 10 in. MITER SAW W/LASER – MODEL NUMBERS TS1355L and TS1355LA

The model number will be found on a plate attached to the motor housing. Always mention the model number in all correspondence regarding your **MITER SAW** or when ordering repair parts.

## PARTS LIST

KEY NO.	PART NUMBER	DESCRIPTION	QTY.
88	A63020000350	O-RING .....	1
89	089100208089	BEARING COVER .....	1
90	511336000	GASKET .....	1
91	511337000	GEAR SHAFT .....	1
92	A45204040180	PARALLEL KEY .....	1
93	588029007	LOCK RING.....	1
94	608309000	OUTPUT GEAR .....	1
95	A46000150008	C-RING .....	2
96	A50060000027	BALL BEARING (6000ZZ) .....	1
97	588027005	COMPRESSION SPRING .....	1
98	588026106	SPINDLE LOCK PIN.....	1
99	A47000040006	E-RING.....	1
100	A30003010007	HEX NUT (M10).....	1
101	A18003100206	FIXED SCREW (M10 X 20 mm).....	1
102	A70003060250	SCREW (M6 X 25 mm PAN HD.) .....	2
103	089100207113	HEX KEY (M35 X 115 mm).....	1
104	A18003050080	SCREW (M5 X 8 mm).....	1
105	089100210035	ARM .....	1
106	089100208107	SCREW (M4 X 12 mm PAN HD.).....	3
107	588021203	RUBBER SLEEVE .....	1
108	A10003040207	SCREW (M4 X 20 mm PAN HD.).....	1
109	A63020000320	O-RING .....	1
110	9053D01000	ARMATURE ASSEMBLY (INC. KEY NOS. 95, 109, 141 AND 142).....	1
111	089100207110	BAFFLE.....	1
112	A90101050603	SCREW (M5 X 60 mm PAN HD.).....	2
113	9053U02000	FIELD ASSEMBLY.....	1
114	089100207098	MOTOR HOUSING .....	1
115	089100208116	WARNING LABEL W/LASER (ENG).....	1
116	A10003050300	SCREW (M5 X 30 mm PAN HD.).....	4
117	089100211900	DATA LABEL (TS1355L) .....	1
	089100210900	DATA LABEL (TS1355LA).....	1
118	A18003050054	SET SCREW (M5 X 5 mm) .....	2
119	588007305	BRUSH HOLDER .....	2
120	089100207107	BRUSH ASSEMBLY .....	2
121	588005105	BRUSH CAP .....	2
122	089100210703	MOTOR HOUSING ASSEMBLY (INC. KEY NOS. 112-116, 118-121 AND 135-137).....	1
123	588004100	BEND RELIEF .....	1
124	089100210004	KNOB .....	1
125	A10003050083	SCREW (M5 X 8 mm PAN HD.).....	1
126	580302000	SWITCH .....	1
127	511308000	COMPRESSION SPRING .....	1
128	089100210018	SWITCH ACTUATOR .....	1
129	089100210019	CARRY HANDLE, INNER.....	1

**RYOBI 10 in. MITER SAW W/LASER – MODEL NUMBERS TS1355L and TS1355LA**

The model number will be found on a plate attached to the motor housing. Always mention the model number in all correspondence regarding your **MITER SAW** or when ordering repair parts.

**PARTS LIST**

<b>KEY NO.</b>	<b>PART NUMBER</b>	<b>DESCRIPTION</b>	<b>QTY.</b>
130	089100300723	ADJUSTABLE LASER GUIDE .....	1
131	A36031018255	SPRING WASHER (M10).....	2
132	089100210015	SAFETY PIVOT PLATE.....	1
133	A70003040200	SCREW (M4 X 20 mm PAN HD.) .....	4
134	089100210022	CORD ASSEMBLY .....	1
135	A10003050150	SCREW (M5 X 15 mm PAN HD.).....	2
136	089100207105	LOGO LABEL.....	1
137	089100207099	END CAP.....	1
138	089100208139	BOLT (M5 X 15 mm, SHOULDER) .....	1
139	511505000	LASER GUIDE BOLT.....	1
140	089100207117	HANG TAG LABEL (TIP OVER) .....	1
141	A50006080049	BALL BEARING (608).....	1
142	A50060020056	BALL BEARING (6002) .....	1
143	A90003040125	SCREW (M4 X 12 mm PAN HD.).....	2
144	578313006	CORD CLAMP .....	1
145	089100210005	KNOB SCREW (M8 X 60 mm).....	1
146	A35010823020	FLAT WASHER (M8).....	1
147	089100210025	CROWN MOULDING MOUNTING BLOCK.....	1
148	089100211005	ADJUSTABLE TUBE, UPPER .....	1
149	565506000	ADJUSTABLE TUBE, LOWER.....	1
150	089100210006	KNOB SCREW (M8 X 45 mm).....	1
151	089100210007	EXTENSION TABLE.....	1
152	511346000	TWIST ROD.....	1
153	511344000	COMPRESSION SPRING .....	1
154	511343000	SLEEVE.....	1
155	A47000060002	E-CLIP.....	2
156	089100210031	LABEL, TWIST HANDLE WARNING .....	1
157	089100210008	LABEL, (8.5 in. INCREMENTS) .....	1
158	089100210009	WEAR PAD.....	1
159	545328000	OUTER CARRY HANDLE.....	1
160	089100210023	LOWER CARRY HANDLE .....	1
161	A49510040063	RIVET .....	1
162	A10003050400	SCREW (M5 X 40 mm PAN HD.).....	4
163	089100210704	“D” HANDLE ASSEMBLY.....	1
164	089100210706	BEVEL PIVOT ASSEMBLY .....	1
165	089100210707	CROWN MOULDING ASSEMBLY .....	1
166	089100210708	TABLE EXTENSION ASSEMBLY (INC. KEY NOS.11-15).....	1
167	089100300726	HEX KEY (1/16 in.) .....	1
168	089100212011	SCREW .....	1
169	089100212012	SPACER.....	1
	987000217	OPERATOR’S MANUAL (TS1355L)	
	987000130	OPERATOR’S MANUAL (TS1355LA)	
	10-22-09		
	(REV:02)		