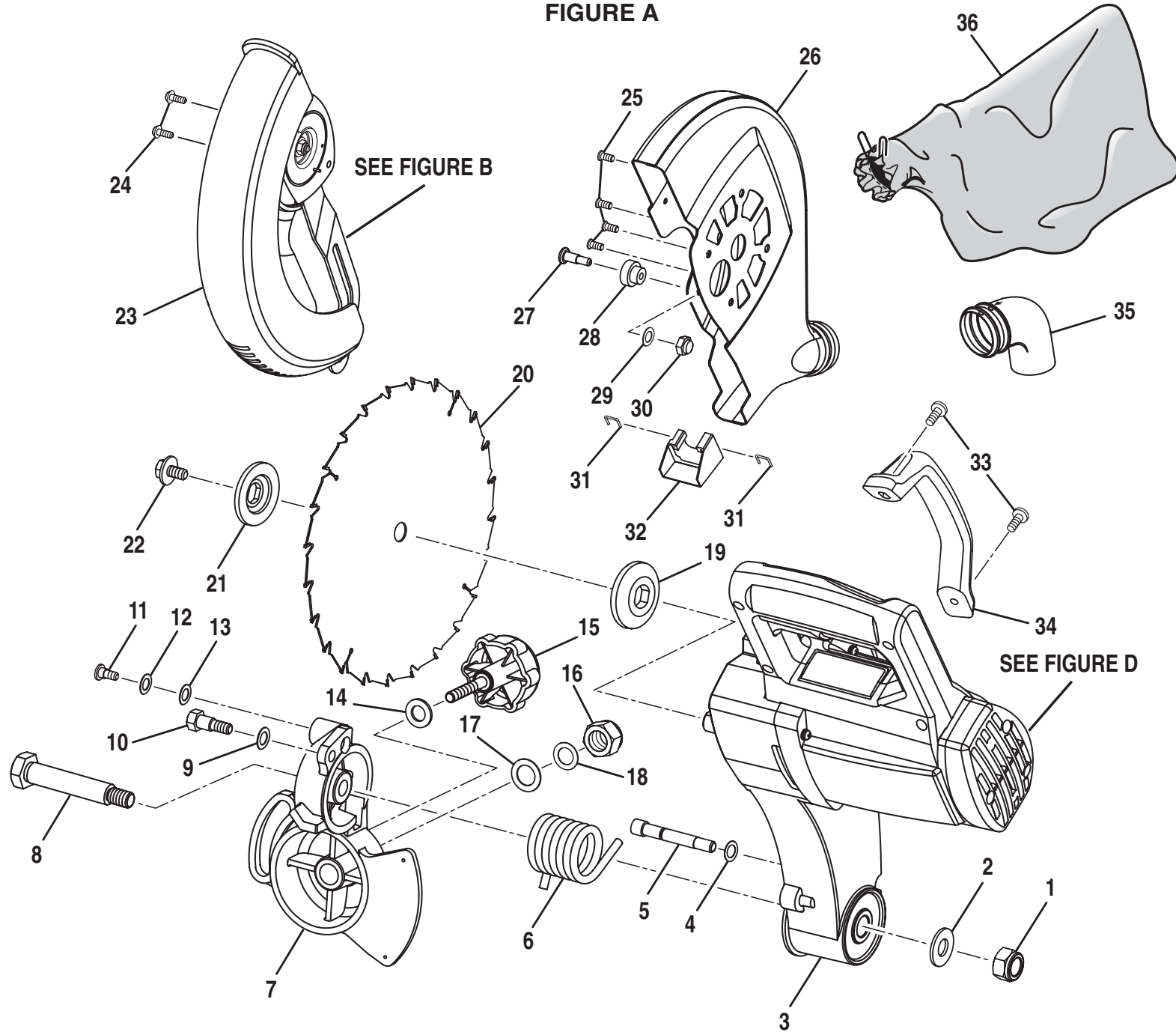


RYOBI 10 in. (254 mm) COMPOUND MITER SAW – MODEL NO. TS1351

FIGURE A



## RYOBI 10 in. (254 mm) COMPOUND MITER SAW – MODEL NO. TS1351

The model number will be found on a plate attached to the motor housing. Always mention the model number in all correspondence regarding your **Miter Saw** or when ordering repair parts.

### PARTS LIST FOR FIGURE A

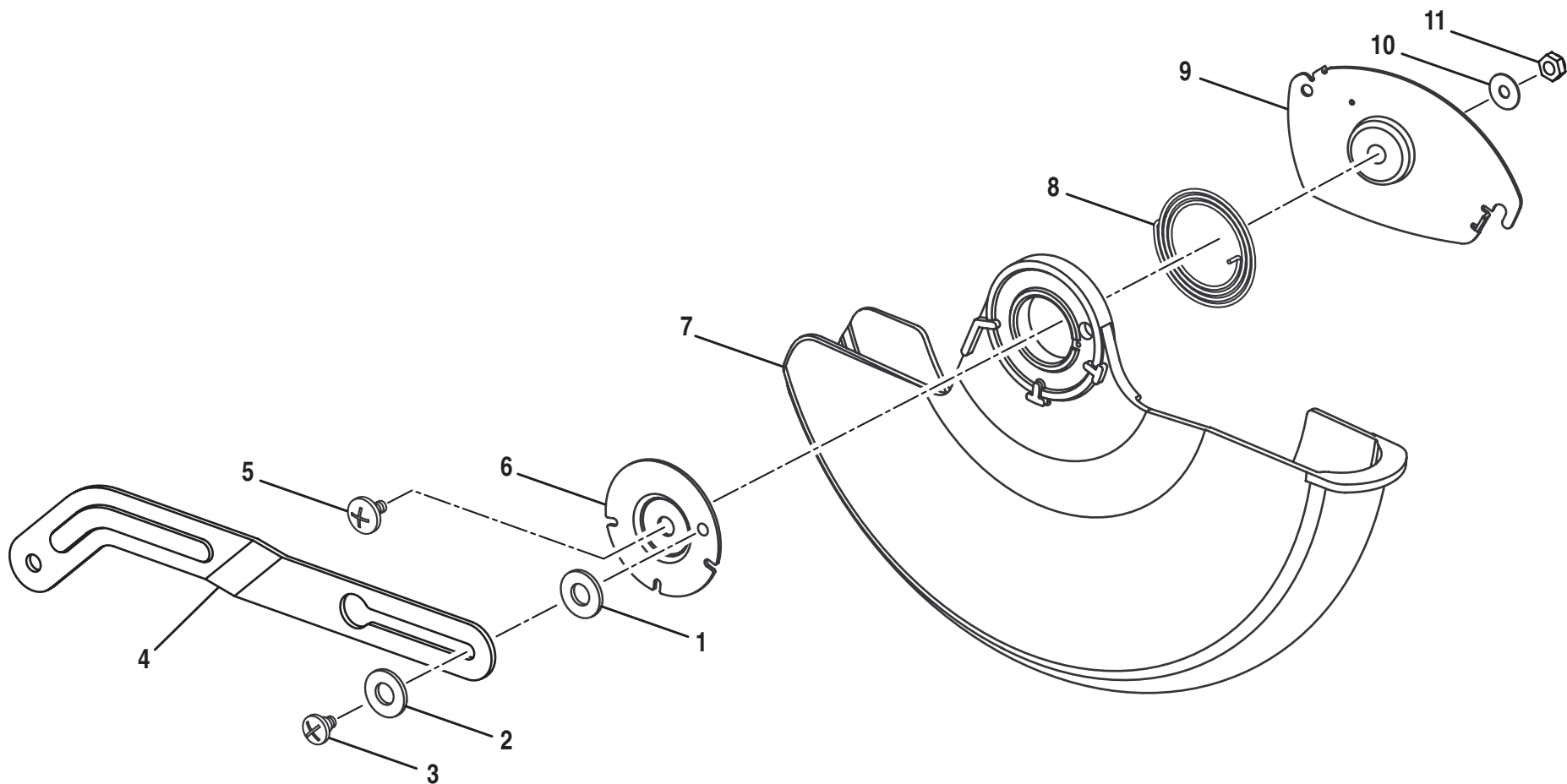
Key No.	Part Number	Description	Quan.	Key No.	Part Number	Description	Quan.
1	022300-001	Nylon Lock Nut .....	1	19	270511-000	Inner Blade Flange .....	1
2	021123-001	Washer .....	1	20	350056-000	Blade .....	1
3	See Fig. D	Motor Assembly .....	1	21	270373-000	Outer Blade Flange .....	1
4	025100-001	O-Ring .....	1	22	020300-011	Blade Bolt .....	1
5	026308-000	Pin .....	1	23	See Fig. B	Lower Blade Guard Assembly .....	1
6	029219-003	Torsion Spring .....	1	24	089100100133	* Screw (#10-32 x 5/16 in. Pan Hd.) .....	2
7	900750-000	Pivot .....	1	25	020704-002	Screw .....	4
8	028960-000	Arm Pivot Shaft .....	1	26	270498-000	Upper Blade Guard .....	1
9	983078-001	Lock Washer .....	1	27	028921-003	Special Screw .....	1
10	020145-001	Bevel Pivot Shaft .....	1	28	330027-000	Rubber Sleeve .....	1
11	020113-008	* Special Screw (M6 x 10L) .....	1	29	983080-001	Flat Washer .....	1
12	021403-007	* Wavy Washer (M7.5 x 16 x 0.8T) .....	1	30	022307-001	Nylon Lock Nut .....	1
13	983079-001	Flat Washer		31	029719-001	* Spring .....	2
14	021109-001	Washer .....	1	32	330055-000	Dust Shute .....	1
15	900751-000	Bevel Knob .....	1	33	020102-005	Screw .....	2
16	022300-001	Nylon Lock Nut .....	1	34	303434-000	Handle .....	1
17	021117-003	Washer .....	1	35	330019-000	Dust Guide .....	1
18	021611-000	Wavy Washer .....	1	36	900324-006	Dust Bag .....	1

\* STANDARD HARDWARE ITEM — MAY BE PURCHASED LOCALLY

**WARNING:** Improper repair of a double insulated tool can result in damages to the double insulation system possibly causing electrical shock or electrocution. Any repairs requiring disassembly of your tool requires safety testing and should only be performed by a Ryobi Authorized Service Center. For the service center nearest you call 1-800-525-2579 in the United States or 1-866-897-9624 in Canada.

RYOBI 10 in. (254 mm) COMPOUND MITER SAW – MODEL NO. TS1351

FIGURE B



## RYOBI 10 in. (254 mm) COMPOUND MITER SAW – MODEL NO. TS1351

The model number will be found on a plate attached to the motor housing. Always mention the model number in all correspondence regarding your **Miter Saw** or when ordering repair parts.

### PARTS LIST FOR FIGURE B

Key No.	Part Number	Description	Quan.
1	021119-002	* Flat Washer (M5.5 x 16 x 0.8T) .....	1
2	021103-014	* Flat Washer (M7.5 x 16 x 1.5T) .....	1
3	028931-002	* Screw (M5 x 0.8T) .....	1
4	270502-000	Blade Guard Bracket .....	1
5	028939-004	* Screw (#10-32 Pan Hd.) .....	1
6	270376-002	Lower Blade Guard Retainer .....	1
7	303449-000	Lower Blade Guard .....	1
8	029301-003	Return Spring .....	1
9	270184-006	Blade Bolt Cover .....	1
10	021108-006	* Flat Washer (#13/64 x 15/32 x 0.5T) .....	1
11	022307-001	* Nylon Lock Nut (#10-32) .....	1
	983000-249	Operator's Manual	
	03-15-07		
	(REV:01)		

\* STANDARD HARDWARE ITEM — MAY BE PURCHASED LOCALLY