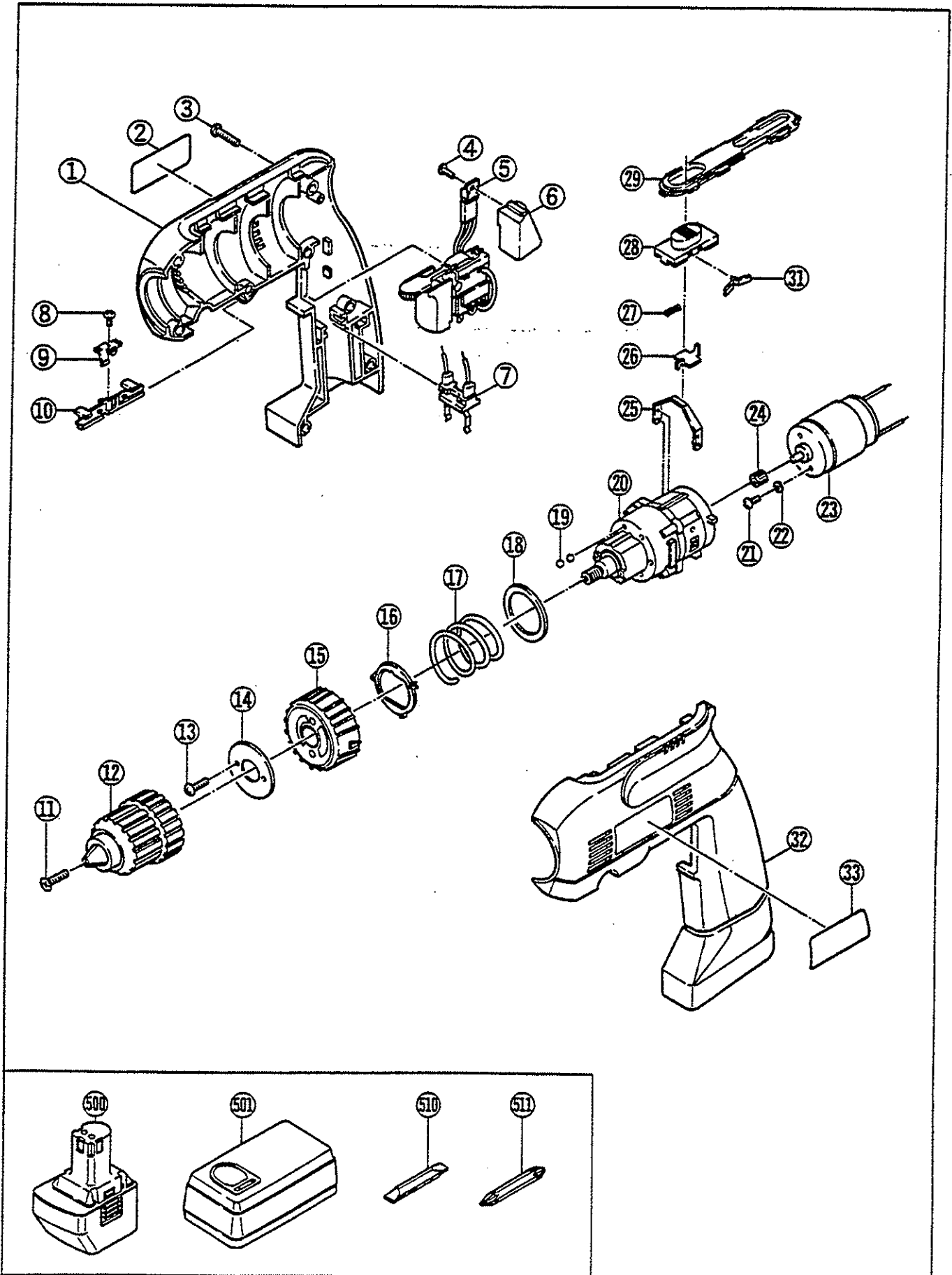


CORDLESS DRILL

TFD-170VR



**PARTS LIST FOR AFTER SALES SERVICE
MODEL TFD170VR**

REF	PART NO.	DESCRIPTION	QTY	REF	PART NO.	DESCRIPTION	QTY
	1800004	HOUSING (A)	1	34	1360062	BATTERY CLIP (NOT SHOWN)	2
2	1910027	NAME PLATE	1	STANDARD ACCESSORIES			
3	1130045	TAPPING SCREW M4X22	8	500	1400123	BATTERY 9.6V	1
4	1130050	TAPPING SCREW M3X8	1	501	6403073	MULTIVOLT CHARGER	1
5	1550008	VAR. & REVERSIBLE SWITCH	1	510	1740030	SLOTTED BIT	1
6	1320007	HEAT SINK	1	511	1740040	PHILLIPS BIT	1
7*	1580002	TERMINAL	1				
8	1130046	TAPPING SCREW M2X6	1				
9	1150014	BIT GRIP	1				
10	1360021	BIT GUARD	1				
11	1130049	MACHINE SCREW (L.H.T.)	1				
12	6072933	3/8" KEYLESS CHUCK	1				
13	1130048	TAPPING SCREW M3X10	2				
14	1150017	MOUNTING PLATE	1				
15	1360023	CLUTCH CAP	1				
16	1150016	CLUTCH RING HOLDER	1				
17	1180009	COMPRESSION SPRING	1				
18	1900016	WASHER	1				
19	1290002	STEEL BALL 5MM	12				
20	1080022	GEAR BOX COMPLETE	1				
21	1130047	MACHINE SCREW M4	2				
22	1900015	SPRING WASHER M4	2				
23	1030007	MOTOR COMPLETE	1				
24	1200001	PINION GEAR	1				
25	1150013	CHANGE LEVER	1				
26	1150012	LEVER CARRIER	1				
27	1180006	COMPRESSION SPRING	2				
28	1830001	CHANGE KNOB	1				
29	1360020	CONTROL PANEL	1				
31	1180007	SPRING PLATE	1				
32	1800005	HOUSING (B)	1				
33	1920007	"RYOBI" MARK	1				

SERVICE NOTES:

*Ref. #34 not shown
Switch wiring same as TDS4000