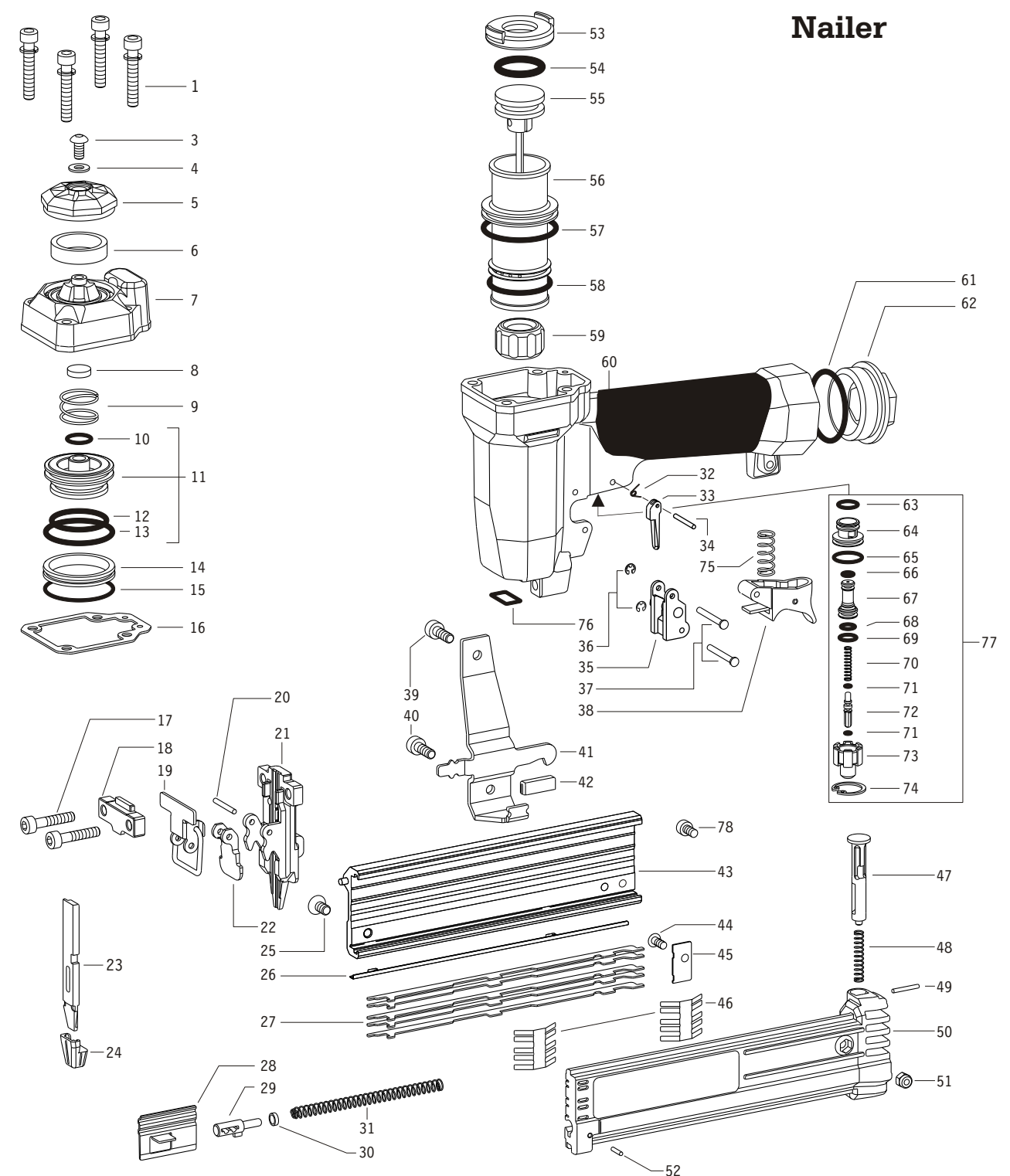


# MODEL: SS-4450ST

# SureShot 4450ST Pneumatic Brad and Pin Nailer

Key#	Part#	Description#	Key#	Part#	Description#
1	1015482	Screw	41	501847	Support
3	1015484	Screw	42	501848	Sliderstop
4	1015485	Washer	43	501849	Magazine
5	1015486	Exhaust Deflector	44	501850	Screw
6	1015487	Silencer	45	501851	Spacer Holder
7	1015488	Head	46	501852	Spring
8	1015489	Exhaust Gasket	47	501715	Trigger
9	1015340	Spring	48	1015507	Spring
10	1015305	O-Ring	49	501692	Pin
11	1015490	Valve Ass'y	50	501854	Slider
12	1015491	O-Ring	51	501855	Nut
13	1015492	O-Ring	52	501853	Pin
14	1015493	Ring	53	1015496	Gasket
15	1015494	O-Ring	54	1015497	O-Ring
16	1015495	Head Gasket	55	501838	Driver Blade Ass'y
17	501627	Screw	56	1015500	Cylinder
18	501856	Nose Guide	57	1015499	O-Ring
19	501716	Noseplate Lock	58	1015501	O-Ring
20	501693	Pin	59	1015502	Bumper
21	501839	Nose	60	502162	Body
22	501841	Safety Noseplate	61	1015527	O-Ring
23	502170	Noseplate	62	1015528	Inlet Cap
24	501706	Contact Tip	63	1015303	O-Ring
25	501684	Screw	64	1015509	Trigger Valve Housing
26	501842	Sliding Guide	65	1015510	O-Ring
27	501843	Spacer	66	1015511	O-Ring
28	501844	Pusher	67	501647	Valve Piston
29	502167	Spring Bearing	< 68	501418	O-Ring
30	501719	Signal Washer	69	1015514	O-Ring
31	501846	Spring	< 70	502718	Spring
32	502168	Spring	71	501648	O-Ring
33	502166	Safety Trigger	72	501703	Trigger Valve
34	502161	Pin	73	501704	Bush
35	502164	Safety Guide	74	1015518	E-Ring
36	1015319	E-Ring	75	502149	Spring
37	1015521	Pin	76	501860	O-Ring
38	502165	Trigger	77	501650	Trigger Valve Ass'y
39	1015522	Screw	78	1015313	Screw
40	501633	Screw			



\* = New Part  
< = Part Change

**SAFETY:** A pair of safety glasses that meets ANSI Z87.1 requirements must always be worn when using this tool. The use of proper eye protection has been shown to significantly reduce eye injuries. Complete safety training is available from your DUO-FAST representatives. It includes a wide range of safety materials to help keep safety awareness high throughout the work area.



**SEGURIDAD:** Un par de gafas de seguridad que cumplen con los requerimientos ANSI Z87.1 deber ser siempre usados con el uso de esta herramienta. El uso de protección ocular adecuada ha mostrado que reduce significativamente las lesiones oculares. Una capacitación completa sobre seguridad está disponible a través de sus representantes de DUO-FAST. La misma incluye una amplia gama de material sobre seguridad para ayudarlo a mantener un alto nivel de conciencia sobre la seguridad en toda el área de trabajo.



**WARRANTY:** Before buying or using any DUO-FAST tool, read the limited warranty that applies. For warranty details, see the full-line catalog or the warranty information in the tool carton.

**GARANTÍA:** Antes de comprar o utilizar cualquier herramienta DUO-FAST, lea la garantía limitada que se aplica. Para obtener detalles de la garantía consulte el catálogo de toda la línea o la información sobre la garantía en la caja de la herramienta.

**Always Wear  
Safety Glasses**  
When Using  
Power Tools  
402510

**SURESHOT  
4450ST**