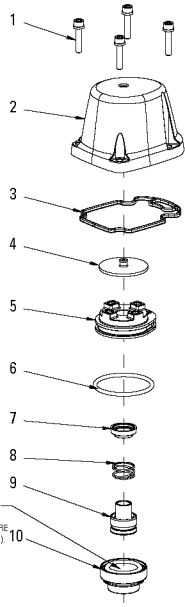
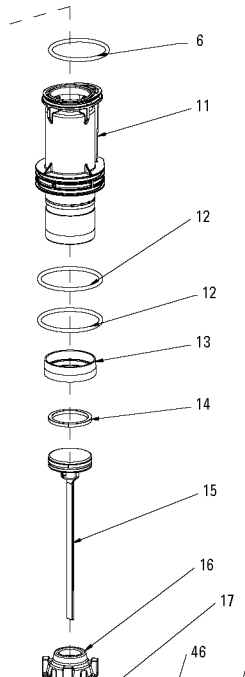


INDUSTRIAL OIL-FREE STAPLER GRAPADORA INDUSTRIAL SIN ACEITE AGRAFEUSE INDUSTRIELLE SANS HUILE

18-25 IN-Lbs.
OF TORQUE
(21-29 CM-KG)
4 PLACES



APPLY GREASE ON THIS INSIDE
SURFACE OF DIAPHRAM (ITEM 10)
APPROXIMATELY 3/16" DOWN, WHERE
IT MATES WITH THE INSERT (ITEM 3).



**SX150LM-1
CONTACT ACTUATED TRIGGER ASSEMBLY**

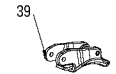


FIGURE 1

**SX150LM-2
SEQUENTIAL ACTUATED TRIGGER ASSEMBLY**

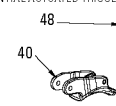


FIGURE 2

**SX150LM-3
TRIGGER ACTUATED ASSEMBLY**

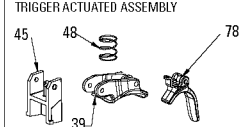
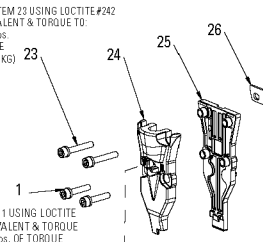


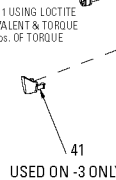
FIGURE 3

INSTALL ITEM 23 USING LOCTITE #242
OR EQUIVALENT & TORQUE TO:

18-25 IN-Lbs.
OF TORQUE
(21-29 CM-KG)
2 PLACES

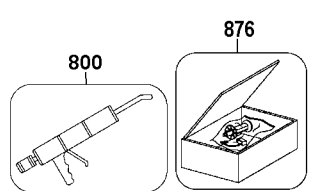
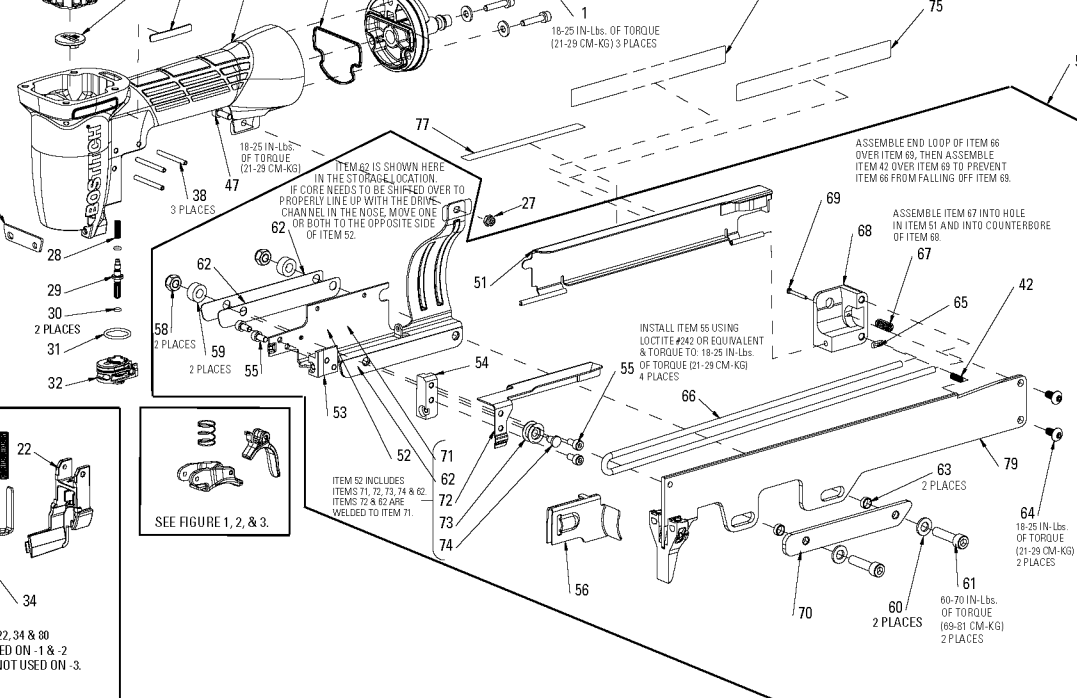
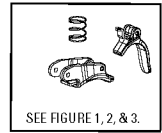
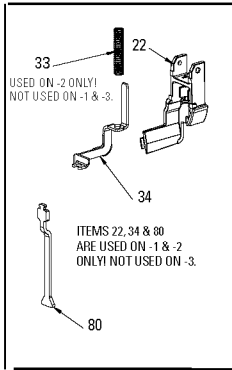
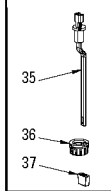


INSTALL ITEM 1 USING LOCTITE
#242 OR EQUIVALENT & TORQUE
TO: 18-25 IN-Lbs. OF TORQUE
(21-29 CM-KG)
2 PLACES



USED ON -3 ONLY!

ADJUSTABLE TRIP
ITEMS 35, 36 & 37
REPLACE ITEM 80:



Parts List for SX150LM Type 0

Item Number	Part Number	Description	Qty Required
1	121051	SCREW-SHCS-M4X0.70X2	9
2	120996	CAP-FRAME	1
3	113337	SEAL-FRAME/CAP	1
4	160186	SEAL-TOP	1
5	160187	HOLD DOWN-HEADVALVE	1
6	101058	O-RING-1.487X.103	2
7	120989	SEAL-INSERT	1
8	120991	SPRING-HEADVALVE	1
9	120032	INSERT-HEADVALVE	1
10	120027	DIAPHRAM-HEAD VALVE	1
11	120028	SLEEVE-BT200	1
12	RG161210	O-RING-1.612X.103 NB	2
13	120061	SEAL-CHECK	1
14	S32109	RING-PISTON	1
15	173898	ASSEMBLY-PISTON/DRIV	1
16	171415	BUMPER	1
17	121030	GUIDE-DRIVER	1
18	149769	FRAME-SX/SL LONG MAG	1
19	121035	SEAL-FRAME END CAP	1
20	166054	CAP-QUICK CONNECTOR	1
21	121032	DEFLECTOR-CAP END	1
22	149786	GUIDE-ARM	1
23	121052	SCREW-SHCS-M4X0.70X2	1
24	120058	COVER-TRIP	1
25	121282	NOSE	1
26	121279	PLATE-DRIVER	1
27	MHE4070-100	ELASTIC STOP NUT-M4	1

Parts List for SX150LM Type 0

Item Number	Part Number	Description	Qty Required
28	N86115	COMPRESSION SPRING	1
29	121029	STEM-VALVE	1
30	MRG002514	O-RING-.098X.055	2
31	850144	O-RING-.614X.070	1
32	121005	HOUSING-VALVE	1
33	121024	SPRING-TRIP	1
34	120022	TRIP-UPPER	1
35	000000-00	No Longer Available	1
36	120024	THUMBWHEEL	1
37	120056	CONTACT FOOT-NO MAR	1
38	100298	PIN-SPIRAL M3X30	3
39	CNTK1	KIT-CONTACT TRIP CON	1
40	107582	ASSEMBLY-S.T.TRIGGER	1
41	121013	PLUG-COVER	1
42	107527	SPRING-COMP-TRIP ADJ	1
45	121008	STOP-TRIGGER	1
46	000000-00	No Longer Available	1
47	MSC4070-12	SCREW-SHCS-M4X0.70X1	1
48	100387	SPRING-COMPRESSION	1
49	PW8	WASHER-PWR-.188	3
50	000000-00	No Longer Available	1
51	000000-00	No Longer Available	1
52	000000-00	No Longer Available	1
53	149775	BLOCK-MTG-RIGHT-SL	1
54	000000-00	No Longer Available	1
55	MSC4070-8	SCREW-SHCS-M4X0.70X8	4
56	149788	PUSHER-SL LONG MAG	1

Parts List for SX150LM Type 0

Item Number	Part Number	Description	Qty Required
58	MHE6100-100	NUT-ESN M6X1	2
59	105973	SPACER	2
61	MSC6100-25	SCREW-SHCS-M6X1.00X2	2
62	158356	PLATE-SPACER	2
63	000000-00	No Longer Available	1
64	MSB5080-10	SCREW-SBHCS-M5X0.80X	2
65	105053	LINK-SPRING	1
66	149777	SPRING-EXTENSION	1
67	103191	SPRING-COMPRESSION	1
68	149771	BLOCK-PIVOT	1
69	106063	STUD	1
70	000000-00	No Longer Available	1
71	000000-00	No Longer Available	1
72	000000-00	No Longer Available	1
73	149772	PULLEY	1
74	000000-00	No Longer Available	1
75	158612	LABEL-WARNING	1
76	158613	LABEL-WARNING NO C.T	1
77	121287	LABEL-FASTENER SPEC.	1
78	159884	ASSEMBLY-SECOND TRIG	1
80	171085-S	BOSTITCH ARM	1
800	100653	LUBE (2CC)	1
800	100679	LUBE (1LB.CAN)	1
876	SX150-RK	SX150 REPAIR KIT	1