

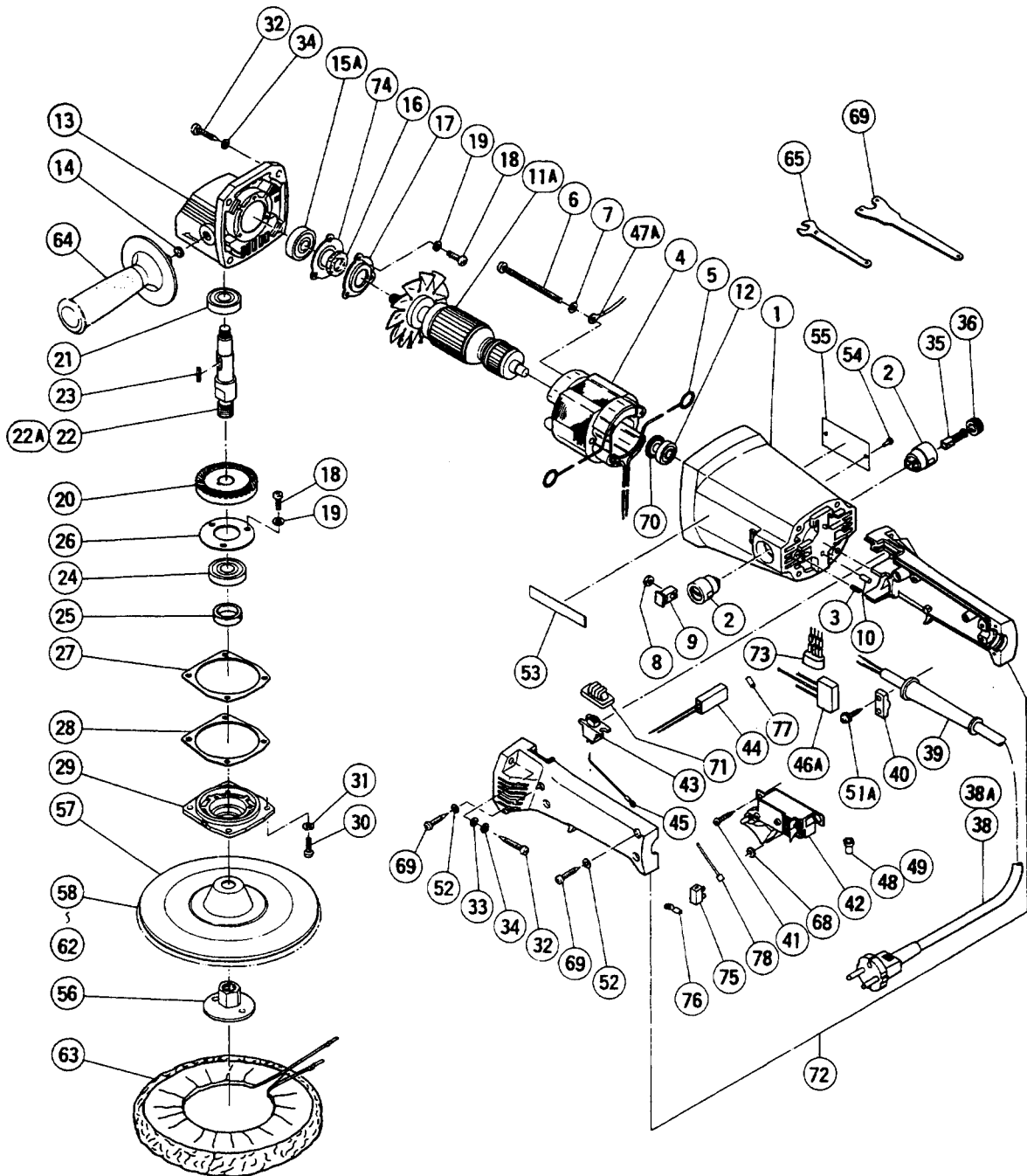
HITACHI

LIST NO. 0307

ELECTRIC TOOL PARTS LIST

■ DISC SANDER POLISHER
Model SAT-180

1993 · 10 · 1
(E8)



PARTS

SAT-180

ITEM NO.	CODE NO.	DESCRIPTION	NO. USED	REMARKS
* 1	953-230	HOUSING ASS'Y	1	INCLUD.2,3
* 1	953-288Z	HOUSING ASS'Y	1	INCLUD.2,3 FOR AUT
* 2	958-900	BRUSH HOLDER	2	
* 2	981-586	BRUSH HOLDER	2	FOR AUT
3	949-385	SLOTTED HD. SET SCREW M4X5 (10 PCS.)	2	
* 4	953-231C	STATOR ASS'Y 110V - 120V	1	INCLUD.5
* 4	953-231E	STATOR ASS'Y 220V - 230V	1	INCLUD.5
* 4	953-231L	STATOR ASS'Y 220V	1	INCLUD.5 FOR EUROPE
* 4	953-231M	STATOR ASS'Y 220V - 230V	1	INCLUD.5 FOR ITA,HOL,SWE,AUT
* 4	953-231J	STATOR ASS'Y 220V - 230V	1	INCLUD.5 FOR NZL
* 4	953-231K	STATOR ASS'Y 220V - 230V	1	INCLUD.5 FOR SAF
* 4	953-231F	STATOR ASS'Y 240V	1	INCLUD.5 FOR GBR
* 4	953-231H	STATOR ASS'Y 240V	1	INCLUD.5 FOR AUS
5	930-703	BRUSH TERMINAL	2	
6	949-233	MACHINE SCREW M5X55 (10 PCS.)	2	
7	949-454	SPRING WASHER M5 (10 PCS.)	2	
8	949-555	NUT M5 (10 PCS.)	2	
9	953-232	NUT COVER	2	
10	931-701	BEARING LOCK	1	
* 11A	953-297C	ARMATURE ASS'Y 110V - 120V	1	INCLUD.12,15A,70
* 11A	953-297E	ARMATURE ASS'Y 220V - 230V	1	INCLUD.12,15A,70
* 11A	953-297F	ARMATURE ASS'Y 240V	1	INCLUD.12,15A,70
12	608-VVM	BALL BEARING 608VVMC2EPS2L	1	
13	953-234	GEAR COVER ASS'Y	1	INCLUD.14
14	937-033	FELT WASHER	1	
15A	600-2VV	BALL BEARING 6002VVMCPS2S	1	
16	953-235	FELT PACKING (A)	1	
17	953-236	BEARING COVER	1	
18	949-217	MACHINE SCREW M4X12 (10 PCS.)	6	
19	949-453	SPRING WASHER M4 (10 PCS.)	6	
20	953-237	GEAR	1	
21	620-0VV	BALL BEARING 6200VVMCPS2S	1	
* 22	953-238Z	SPINDLE	1	
* 22A	953-248P	SPINDLE	1	5/8" - 11UNC FOR USA
23	940-533	FEATHER KEY 3X3X10	1	
24	620-2VV	BALL BEARING 6202VVMCPS2S	1	
25	938-403	FELT PACKING	1	
26	937-077	BEARING COVER (A)	1	
27	953-239	SEAL PACKING (A)	1	
28	953-240	THRUST WASHER (B)	2	
29	953-241	PACKING GLAND	1	
30	949-239	MACHINE SCREW M5X16 (10 PCS.)	4	
31	949-454	SPRING WASHER M5 (10 PCS.)	4	
32	937-807	TAPPING SCREW D5X25	8	
33	949-424	WASHER M5 (10 PCS.)	4	
34	949-454	SPRING WASHER M5 (10 PCS.)	8	
35	999-043	CARBON BRUSH (1 PAIR)	2	
* 36	945-161	BRUSH CAP	2	
* 36	981-781	BRUSH CAP	2	FOR AUT
* 38	500-226Z	CORD	1	(CORD ARMOR D8.2) FOR AUS
* 38	500-201Z	CORD	1	(CORD ARMOR D10.7) FOR ASIA

*: ALTERNATIVE PARTS

PARTS

SAT-180

ITEM NO.	CODE NO.	DESCRIPTION	NO. USED	REMARKS
* 38	500-223Z	CORD	1	(CORD ARMOR D10.7) FOR SIN
* 38	500-231Z	CORD	1	(CORD ARMOR D8.2) FOR GBR (110V),SAF
* 38	500-234Z	CORD	1	(CORD ARMOR D8.2) FOR EUROPE
* 38	500-240Z	CORD	1	(CORD ARMOR D8.2) FOR USA
* 38	500-420Z	CORD	1	(CORD ARMOR D10.7) FOR SAU (127V)
* 38	500-423Z	CORD	1	(CORD ARMOR D8.2) FOR SAU (220V)
* 38A	500-435Z	CORD	1	(CORD ARMOR D8.2) FOR GBR (240V)
* 39	958-049Z	CORD ARMOR D8.2	1	
* 39	940-778	CORD ARMOR D10.7	1	
40	937-831	CORD CLIP	1	
41	954-017	TAPPING SCREW D4X12	2	
* 42	986-201	SWITCH (A) (1P SCREW TYPE) W/LOCK	1	
* 42	958-832	SWITCH (B) (2P SCREW TYPE) W/LOCK	1	FOR AUS,GBR,FRG,FRA,DEN,ESP,SUI,USA, HKG
* 42	931-573	SWITCH (2P PILLAR TYPE) W/LOCK	1	FOR ITA,HOL,SWE,AUT,NOR
* 42	953-249P	SWITCH (B) (2P SCREW TYPE) W/O LOCK	1	FOR CAN
* 43	953-281	SLIDE SWITCH (1P SOLDER TYPE)	1	
* 43	953-266Z	SLIDE SWITCH ASS'Y (1P SOLDER TYPE)	1	INCLUD.45 FOR USA
* 44	956-613	DIODE 100V - 127V	1	
* 44	957-558	DIODE 220V - 240V	1	
* 44	953-267Z	DIODE 110V - 115V	1	FOR USA
* 44	990-373	CONTROLLER CIRCUIT	1	FOR AUS
* 45	953-243	INTERNAL WIRE	1	
* 45		INTERNAL WIRE	1	FOR NZL,ITA,SWE,NOR
* 45		INTERNAL WIRE	2	FOR USA
* 46A	984-273	NOISE SUPPRESSOR	1	
* 47A	981-010	INTERNAL WIRE	1	
* 48	959-140	CONNECTOR 50091 (10 PCS.)	1	
* 48	959-140	CONNECTOR 50091 (10 PCS.)	2	
* 49	959-141	CONNECTOR 50092 (10 PCS.)	1	
51A	984-750	TAPPING SCREW (W/FLANGE) D4X16	2	
52	949-423	WASHER M4 (10 PCS.)	3	
53	957-581	HITACHI LABEL	1	
* 54	949-509	RIVET D2.5X3.2 (10 PCS.)	2	
55		NAME PLATE	1	
* 56	953-246Z	WASHER NUT M14	1	
* 56	953-254P	WASHER NUT 5/8" - 11UNC	1	FOR USA
* 57	953-247Z	RUBBER PAD D14	1	
* 57	953-255	RUBBER PAD FOR D16 HOLE	1	FOR USA
58	939-042	SANDING DISCS 180MM CC24 (10 PCS.)	2	
59	939-043	SANDING DISCS 180MM CC30 (10 PCS.)	2	
60	939-047	SANDING DISCS 180MM CC50 (10 PCS.)	2	
61	939-049	SANDING DISCS 180MM CC80 (10 PCS.)	2	
62	939-051	SANDING DISCS 180MM CC120 (10 PCS.)	2	
63	949-103	WOOL BONNET 180MM	1	
64	956-833	SIDE HANDLE	1	
65	937-914	WRENCH 17MM	1	
66	937-913Z	WRENCH	1	
* 68	949-440	WASHER (BRASS) M3.5 (10 PCS.)	2	FOR AUS (FOR SWITCH)
69	956-384	TAPPING SCREW D4X20	3	
70	956-387	DUST SEAL (A)	1	

*: ALTERNATIVE PARTS

