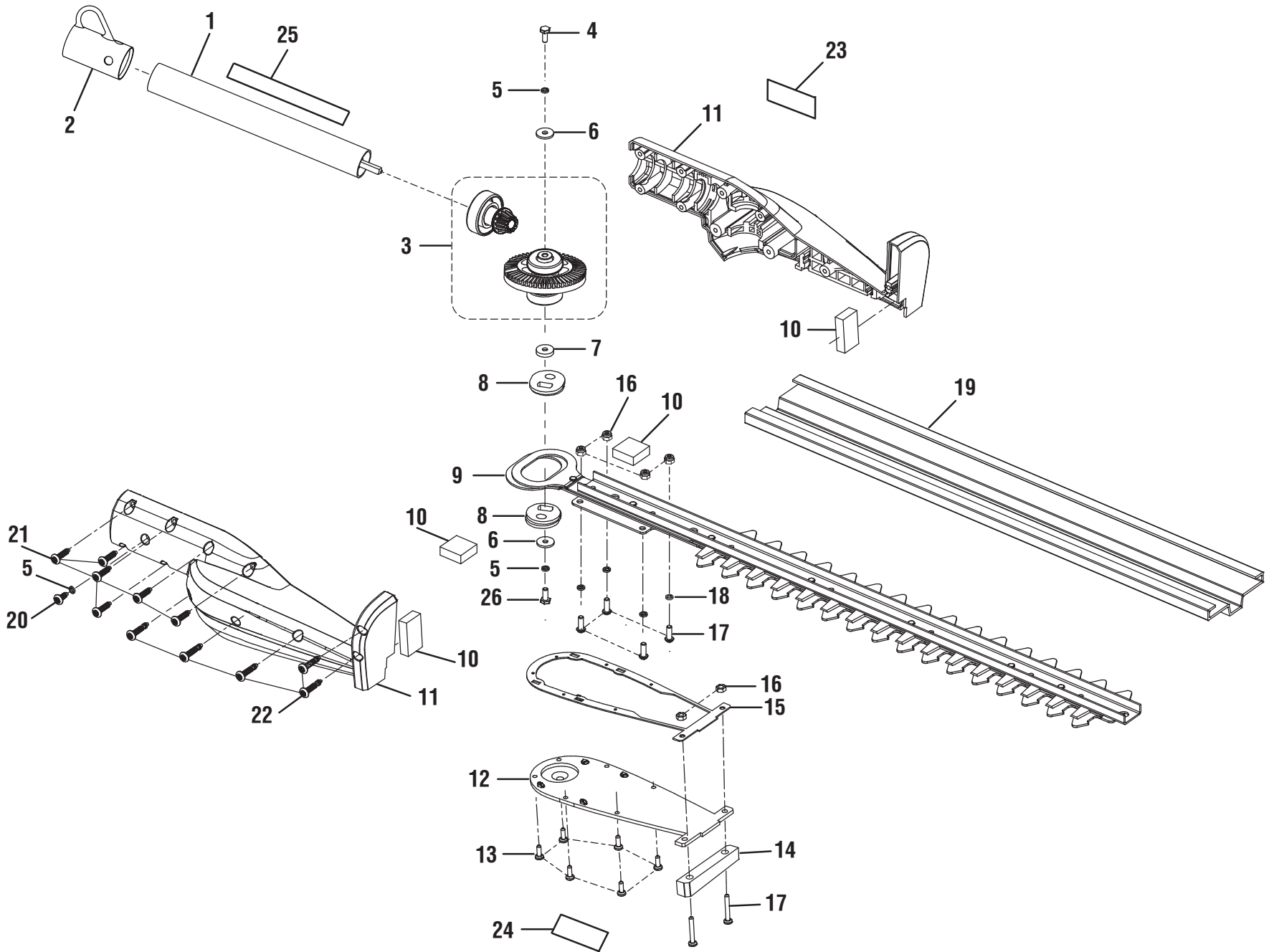


**RYOBI  
EXPAND-IT HEDGE  
TRIMMER ATTACHMENT  
ITEM NO. RYHDG88  
MFG. NO. 090113012  
REPAIR SHEET**

RYOBI EXPAND-IT HEDGE TRIMMER ATTACHMENT - ITEM NUMBER RYHDG88



## RYOBI EXPAND-IT HEDGE TRIMMER ATTACHMENT – ITEM NUMBER RYHDG88

The item number and manufacturing number will be found on a label attached to the unit. Always mention the item number and manufacturing number of your **HEDGE TRIMMER ATTACHMENT** when requesting service or ordering repair parts.

### PARTS LIST

KEY NO.	PART NUMBER	DESCRIPTION	QTY
1	310699011	Lower Drive Shaft Assembly (Inc. Key Nos. 2 and 25).....	1
2	518019002	Hanger Cap .....	1
3	220100007	Output Gear and Pinion Assembly .....	1
4	660927001	Screw (M5 x 10 mm).....	2
5	678343001	Spring Washer (M5).....	3
6	678341002	Washer (M5).....	2
7	638342001	Cam Spacer.....	1
8	678350001	Cam .....	2
9	308548030	Blade Assembly .....	1
10	901382001	Felt.....	2
11	120530011	Housing Assembly (Inc. Key No. 23) .....	1
12	311509001	Bottom Housing Plate (Inc. Key No.24).....	1
13	660923001	Screw (M4 x 16 mm).....	6
14	523427001	Guard.....	1
15	591617001	Seal.....	1
16	678344002	Lock Nut (M4) .....	6
17	660924002	Screw (M4 x 16 mm).....	6
18	678346001	Spring Washer (M4) .....	4
19	518463009	Scabbard .....	1
20	660925002	Screw (M4 x 9 mm).....	1
21	660927002	Screw (M5 x 14.5 mm).....	6
22	660926001	Screw (M5 x 26.5 mm).....	5
23	940705023	Logo Label.....	1
24	940680005	Hot Surface Label.....	1
25	940749006	Warning Label.....	1
26	660927008	Screw (M5 x 12 mm, Hex Hd.).....	1
	<b>NOT SHOWN:</b>		
	991000569	Operator's Manual	
	10-20-15		
	(Rev:02)		