

RYOBI
40 Volt Lawn Mower
Item No. RY40LM03
Manufacturing No.107422001
Repair Sheet

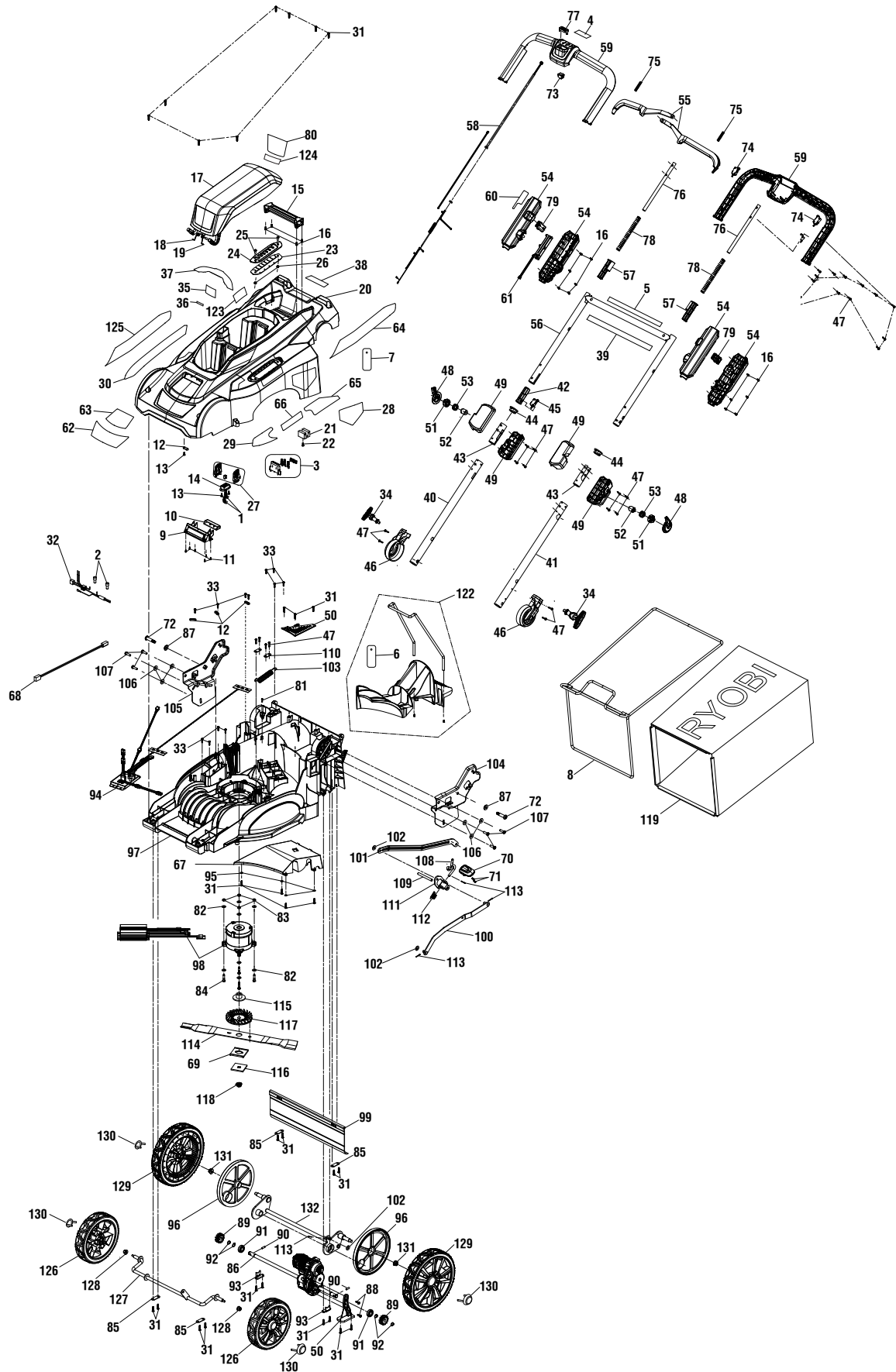
Techtronic Industries Power Equipment

P.O. Box 1288, Anderson, SC 29622

Phone 1-800-860-4050

www.ryobitools.com

RYOBI 40V LAWN MOWER – MODEL NO. RY40LM03



RYOBI 40V LAWN MOWER – MODEL NO. RY40LM03

The model number will be found on a label attached to the deck. Always mention the model number in all correspondence regarding your **LAWN MOWER** or when ordering replacement parts.

PARTS LIST

KEY NO.	PART NUMBER	DESCRIPTION	QTY	KEY NO.	PART NUMBER	DESCRIPTION	QTY
1	639178001	Female Terminal	2	34	311620002	Spring Pin Adjustment	2
2	870601002	Wire Connector (Close-End)	2	35	941016031	Wet Conditions Warning Label.....	1
3	311209001	Battery Hold Assembly	1	36	940851500	Onboard Battery Storage Label	1
4	941851177	Starting Instructions Label	1	37	941016032	Start Key Warning Label	1
5	941851178	Handles Fully Extended Label.....	1	38	941511038	Attachment User Callout Label	1
6	918016030	Mulch Plug Hangtag.....	1	39	941851125	40V Lithium Crossbar Logo Label... 1	
7	918016033	Start Key Hangtag.....	1	40	697526001	Right Lower Handle Tube.....	1
8	658015001	20 in. Grass Bag Frame	1	41	697527001	Left Lower Handle Tube	1
9	537118001	LED Cover	1	42	533467001	Switch Plug	1
10	537117001	Light Reflector.....	1	43	537295001	Handle Tube Bushing	2
11	660203001	Screw (M3 x 8 mm, Pan Hd.)	6	44	529327001	Straight Tube Bushing.....	2
12	513211001	Cord Clip	4	45	760551002	Switch w/Terminals	1
13	660608001	Screw (M4 x 12 mm, T20 Torx Pan Hd.)	3	46	529260001	Hinge Shroud	2
14	526912001	Key Connector Base	1	47	661189003	Screw (M4 x 18 mm, T15 Torx Pan Hd.).....	28
15	537116001	Carry Handle	1	48	536916001	Side Handle Latch.....	2
16	661189002	Screw (M4 x 10 mm, T20 Torx Pan Hd.) .	16	49	205213001	Handle Latch Assembly	1
17	205204001	Battery Cover (Inc. Key Nos. 80 & 124).....	1	50	205215001	Transmission Cover Assembly	1
18	697546001	Battery Door Right Torsion Spring ..	1	51	536919001	Side Compression Disc Holder	2
19	697547001	Battery Door Left Torsion Spring.....	1	52	565045001	Side Compression Disc.....	2
20	205200001	Top Cover (Inc. Key Nos. 28-30, 36-38, 62-66, 80 & 124-125).....	1	53	697483001	Compression Spring (Handle)	2
21	890043001	Grass Bag Sensor Switch	1	54	205211001	Clamshell Assembly (Inc. Key No. 60).....	1
22	660345009	Screw w/Washer (M4 x 10 mm, T20 Torx Pan Hd.).....	1	55	205217001	Trigger Assembly.....	1
23	563454001	Dust Proof Plate	1	56	205203001	Upper Handle Tube Assembly (Inc. Key Nos. 5 & 39).....	1
24	635382001	Lift Arm Bracket	1	57	537015001	Upper Handle Tube Bushing	2
25	660713001	Screw (M5 x 16 mm, Pan Hd.)	2	58	770260001	Wire Assembly	1
26	678509001	Lock Nut (M5 x 0.8).....	2	59	205216001	Upper Handle Assembly (Inc. Key No. 4).....	1
27	205205001	Key Assembly (Inc. Key No. 7).....	1	60	941016025	Handle Lockout Label	1
28	941641001	CPSC Cut Finger Label.....	1	61	314359001	Speed Sensor Switch Assembly	1
29	941016033	Front Green Accent Label	1	62	941016026	Smart Trek Label	1
30	941016034	Side Green Accent Label	1	63	941016027	Ryobi 40V Lithium Label	1
31	660563002	Screw (M4 x 20 mm, T20 Torx Pan Hd.) ..	29	64	941016028	Brushless Label (Left).....	1
32	292012001	Inner Wire w/Terminal.....	1	65	941016029	Single Point Height Adjustment Label.....	1
33	660608002	Screw (M4 x 16 mm, T20 Torx Pan Hd.) ..	12	66	941016030	Cut Height Label	1
				67	527548004	Baffle	1

RYOBI 40V LAWN MOWER – MODEL NO. RY40LM03

The model number will be found on a label attached to the deck. Always mention the model number in all correspondence regarding your **LAWN MOWER** or when ordering replacement parts.

PARTS LIST

KEY NO.	PART NUMBER	DESCRIPTION	QTY	KEY NO.	PART NUMBER	DESCRIPTION	QTY
68	292102001	Inner Wire w/Connector Between Transmission & PCBA	1	102	639013001	Washer (OD18 x ID8.4 x OD18 1t)...	3
69	526920002	Spacer	1	103	694052001	Retention Spring	1
70	529656002	Height Adjustment Handle	1	104	673928001	Adjustment Handle Mount w/Nut (Left)	1
71	664021001	Screw (M3 x 9 mm, Flat Hd.).....	2	105	673929001	Adjustment Handle Mount w/Nut (Right)	1
72	662324003	Screw (M8 x 45 mm, T40 Torx Pan Hd.).....	2	106	638387002	Washer (1/4 in., OD19 x ID7 x 1.6t).....	6
73	760961002	Momentary Switch	1	107	664004003	Screw (1/4 in. x 22 mm., T30 Torx Pan Hd.).....	6
74	760551003	Switch w/Terminals	2	108	637031003	Height Adjustment Lift Arm.....	1
75	696926001	Compression Spring	2	109	639122001	Height Adjustment Axle.....	1
76	696931001	Guide Tube	2	110	639125002	Height Adjustment Press Plate	2
77	534988002	Blade Button	1	111	639203003	Height Adjustment Bracket	1
78	697111001	Compression Spring	2	112	679992001	Height Adjustment Torsion Spring ..	1
79	537702001	Push Button	2	113	678279004	Cotter Pin (Ø2.5 x 16).....	4
80	941016021	Main Warning Label (Part 1).....	1	114	682162001	Blade	1
81	660203087	Screw (M3 x 12 mm, T10 Torx Pan Hd.).....	1	115	613427001	Motor Axle Bushing.....	1
82	638557001	Washer (OD15 x ID6.2 x 0.8t).....	8	116	639118001	Blade Retainer.....	1
83	680196006	Hex Nut (M6)	4	117	535080001	Motor Fan Blade Adapter.....	1
84	660722002	Screw (M6 x 26 mm, Hex Hd.)	4	118	679075001	Hex Nut (M10)	1
85	639116003	Axle Press Plate	4	119	970795001	20 in. Grass Bag.....	1
86	210376001	Transmisson	1	122	205206001	Mulch Plug Assembly (Inc. Key No. 6).....	1
87	636233001	Washer (OD20 x ID8.5 x 2t).....	2	123	941016022	Data Label	1
88	662065001	Screw (10-14 x 15 mm, T25 Torx Pan Hd. #5UNC).....	2	124	941016024	Main Warning Label (Part 2).....	1
89	613239001	Drive Gear	2	125	941016020	Brushless Label (Right)	1
90	622068001	Gear Shaft	2	126	330073010	8 in. Wheel Assembly.....	2
91	682164001	Ball Bearing.....	2	127	696316001	Front Axle.....	1
92	690698001	External Retaining Ring (ID 11 mm).....	4	128	678774012	Flange Nut (M8 x 1.25 mm).....	2
93	639116004	Mounting Plate	2	129	312387003	10 in. Wheel Assembly.....	2
94	280582006	Drive Motor Controller.....	1	130	529655001	Hub Cap.....	4
95	636062001	Washer (OD9.5 x ID4.5 x 1t).....	4	131	662082001	Flange Lock Nut (#3/8-16 UNC).....	2
96	532115001	Wheel Cover.....	2	132	637788002	Rear Axle w/Rotation Plate	1
97	532184005	Deck	1	NOT SHOWN:			
98	314868001	Motor & Controller Assembly	1		995000690	Operator's Manual	
99	534779001	Trailing Shield Guard	1		5-10-19		
100	673931001	Forward Linkage	1		(Rev:01)		
101	635379005	Rearward Linkage	1				

