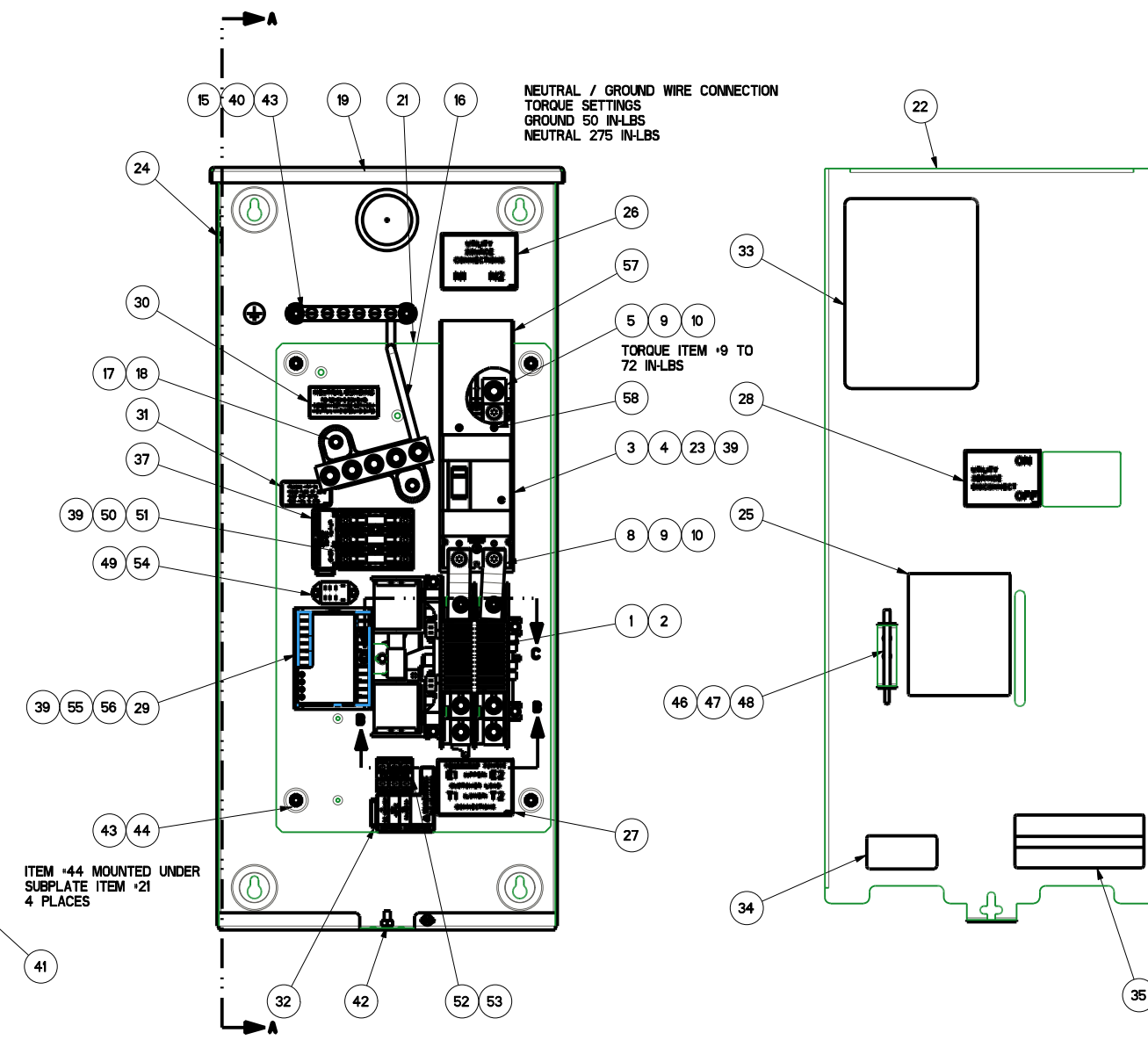
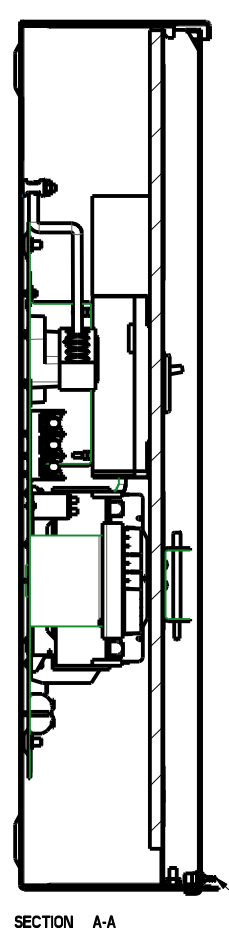


D

C

B

A

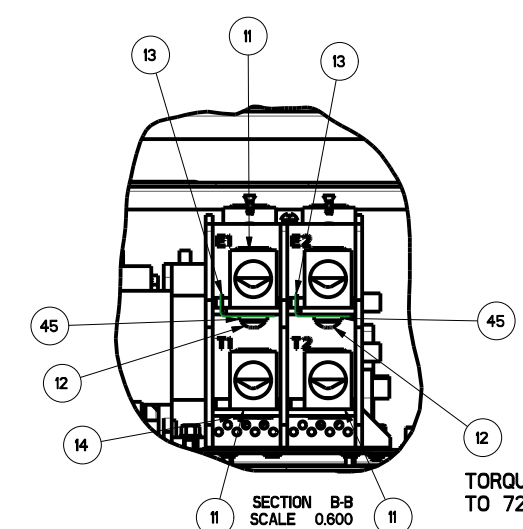


NEUTRAL / GROUND WIRE CONNECTION
TORQUE SETTINGS
GROUND 50 IN-LBS
NEUTRAL 275 IN-LBS

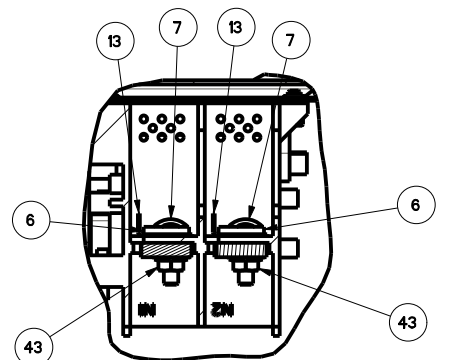
TORQUE ITEM #9 TO
72 IN-LBS

ITEM #44 MOUNTED UNDER
SUBPLATE ITEM #21
4 PLACES

SECTION A-A



SECTION B-B
SCALE 0.600
TORQUE ITEM 12
TO 72 IN-LBS



SECTION C-C
SCALE 0.600
TORQUE ITEMS 7 AND 43
TO 72 IN-LBS

| ITEM # | PART # | QTY | DESCRIPTION |
|--------|-------------|-----|--|
| 1 | 0D9618 | 1 | XFRSW HSB 200A 2P 250V |
| 2 | 074908 | 5 | SCREW HHTT M5-0.8 X 10 BP |
| 3 | 0K0133 | 1 | CB 200A 2POLE 240V 225AF |
| 4 | 0K0973 | 2 | SCREW RHM #8-32 X 2-1/2 |
| 5 | 0H6306 | 2 | LUG SLDLSS 350 MCM-6 AL/CU |
| 6 | 0G4413 | 2 | SPACER, 200 AMP TRANSFER SWITCH |
| 7 | 024334 | 2 | BOLT CARR 1/4-20 X 1 |
| 8 | 0K0130 | 2 | BUSBAR 200A TRANSFER SW N1,N2 |
| 9 | 049897 | 4 | SCREW SHC M8-1.25 X 20 G8 |
| 10 | 022129 | 4 | WASHER LOCK M8-5/16 |
| 11 | 0E3375 | 4 | LUG SLDLSS 250-#6 AL/CU |
| 12 | 0F1252 | 4 | SCREW BHSC 1/4-20 X 3/8 |
| 13 | 0E6033 | 4 | 90 DEGREE DN SPADE CONNECTOR |
| 14 | 0E6034 | 1 | STRAIGHT SPADE CONNECTOR |
| 15 | 0J8202 | 1 | LUG SLDLSS 2/0-#14X#10-32X.125 |
| 16 | 0K1081 | 1 | WIRE NEUTRAL/GND CONNECTION |
| 17 | 0K0108A | 1 | ASSY-NEUT BLK 200A W/TAP |
| 18 | 090388 | 2 | SCREW HHTT M6-1.0 X 12 ZINC |
| 19 | 0K01170ALOR | 1 | ENCLOSURE 200A SE XFRSW RAW |
| 20 | 0K0180ALOR | 1 | COVER, 200A SE XFRSW RAW |
| 21 | 0K0119 | 1 | SUBPLATE, 200A SE XFER SW |
| 22 | 0K01310ALOR | 1 | COVER INSIDE 200A SE XFER SW RAW |
| 23 | 0K0132 | 1 | CB RISER BRACKET 200A GENERAC |
| 24 | 0K1736C | 1 | DECAL, XFER SW SE 200A I20/240 |
| 25 | 0E3484 | 1 | DECAL WARN MANUAL OPER HANDLE |
| 26 | 0G9651A | 1 | DECALS, SERVICE ENTRANCE |
| 27 | 0G9651B | 1 | DECALS, SERVICE ENTRANCE |
| 28 | 0G9651C | 1 | DECALS, SERVICE ENTRANCE |
| 29 | 0K7341A | 1 | ASSY LOAD SHED W/VSCF |
| 30 | 0K1018 | 1 | DECAL, NEUTRAL CONNECTION |
| 31 | 0D3587 | 1 | DECAL, FUSE REPLACEMENT |
| 32 | 0H7917 | 1 | DECAL CUSTOMER CONN RTS |
| 33 | 0K1738 | 1 | DECAL TEST SEQUENCE 100-200A SE |
| 34 | 0G3274 | 1 | DECAL LIVE CIRCUIT ENG/FRN/SPN |
| 35 | 0G3259 | 1 | DECAL TERMINAL SHOCK HZD B1 |
| 36 | 0K1098 | 1 | DECAL RTS TRANSFER SW GENERAC |
| 37 | 0H6389 | 1 | DECAL UTILITY LOAD SENSE 240V |
| 38 | 0H7274 | 1 | DECAL NEC COMPLIANCE |
| 39 | 0A1495 | 8 | SCREW HHTT M4-0.7 X 10 BP |
| 40 | 026850 | 2 | WASHER LOCK EXT 1/4 STL |
| 41 | 0E7213 | 1 | SCREW THUMB 1/4-20 X 1/2 W/SHLD |
| 42 | 085889 | 1 | NUT HEX 1/4-20 SS |
| 43 | 0G8411 | 8 | NUT HEX FL WHIZ 1/4-20 |
| 44 | 022473 | 4 | WASHER FLAT 1/4-M6 ZINC |
| 45 | 022097 | 4 | WASHER LOCK M6-1/4 |
| 46 | 0E6193 | 1 | BRACKET, ARM EXTENDER |
| 47 | 0D6162 | 2 | RIVET POP .156 X .362 AL |
| 48 | 0E6155 | 1 | PIN ARM EXTENDER |
| 49 | 0K0103 | 1 | RELAY PNL 12VDC DPDT 10A@240VA |
| 50 | 0D2572 | 1 | FUSEBLOCK 30A 600V 3POS W/SQ |
| 51 | 073590A | 3 | FUSE 5A X BUSS |
| 52 | 0D7393T | 1 | TERM BLOCK 3P UL 12-20AWG |
| 53 | 0K0124 | 2 | SCREW PHTT M3-0.5 X 25 |
| 54 | 0F2659 | 2 | SCREW HHTT M3-0.5 X 6 BP |
| 55 | 0H7190 | 1 | BRACKET LOAD SHED 200A RTS |
| 56 | 0H7270 | 1 | CHANNEL SNAPTRACK 76.2 X 101.2 |
| 57 | 0K8414 | 1 | CB TERMINAL COVER 2 POLE 240V |
| 58 | 0K8628 | 2 | SCREW PFH 4-24 X 5/16 TCS |
| 59 | 064761 | 4 | TIE WRAP UL 5.6 X .10 NATL (NOT SHOWN) |
| 60 | 0K7641A | 1 | HARNES BOM 200A SE 2P W/VSCF (NOT SHOWN) |

--SERIAL NUMBER AND FRONT DECAL PER MODEL
--SUPPLIED WITH HARNESS ITEM #60

| PART NUMBER | DESCRIPTION | ITEM # 24 | ITEM # 36 |
|-------------|--------------------------------|-----------|-----------|
| OK7640 | ASSEMBLY 200A SERVICE ENTR GEN | OK1736C | PER MODEL |
| OK7640A | EXPLODED VIEW DRAWING | N/A | N/A |
| OK7640B | ASSEMBLY 200A SERVICE ENTR | OK1736C | OK1098 |
| OK7640C | ASSEMBLY 200A SERVICE ENTR | OJ3804C | OK1274 |

REFERENCE DRAWINGS
OK7642 SCHEMATIC/WIRING DIAGRAMS
OK1846 CARTON 30"5 X 14"2 X 7
0H7275 TEST PROC HSB XFRSW
OK0120 KIT, ENCL 200A SE AL GENERAC

GENERAL TOLERANCES UNLESS NOTED

ALL XX : ± 0.4 MM
XXX : ± 0.4 MM
XXXX : ± 0.5 MM
ALL ANG : ± 1°

THIRD ANGLE PROJECTION

INTERPRET DIM AND TOL PER ASME Y14.5M-1994

GENERAC

TITLE
ASSEMBLY 200A SERVICE ENTRANCE GENERAC CB

ISSUE DATE:
SIZE D CAGE NO N/A DWG NO **OK7640S** REV E
SCALE 0.300 WT-KG 321519859.8 SHEET 1 of 1

GENERAL ASSEMBLY DRAWING

DRAWING CREATED FROM PROENGINEER 3D FILE. ECO MODIFICATION TO BE APPLIED TO SOLID MODEL ONLY.