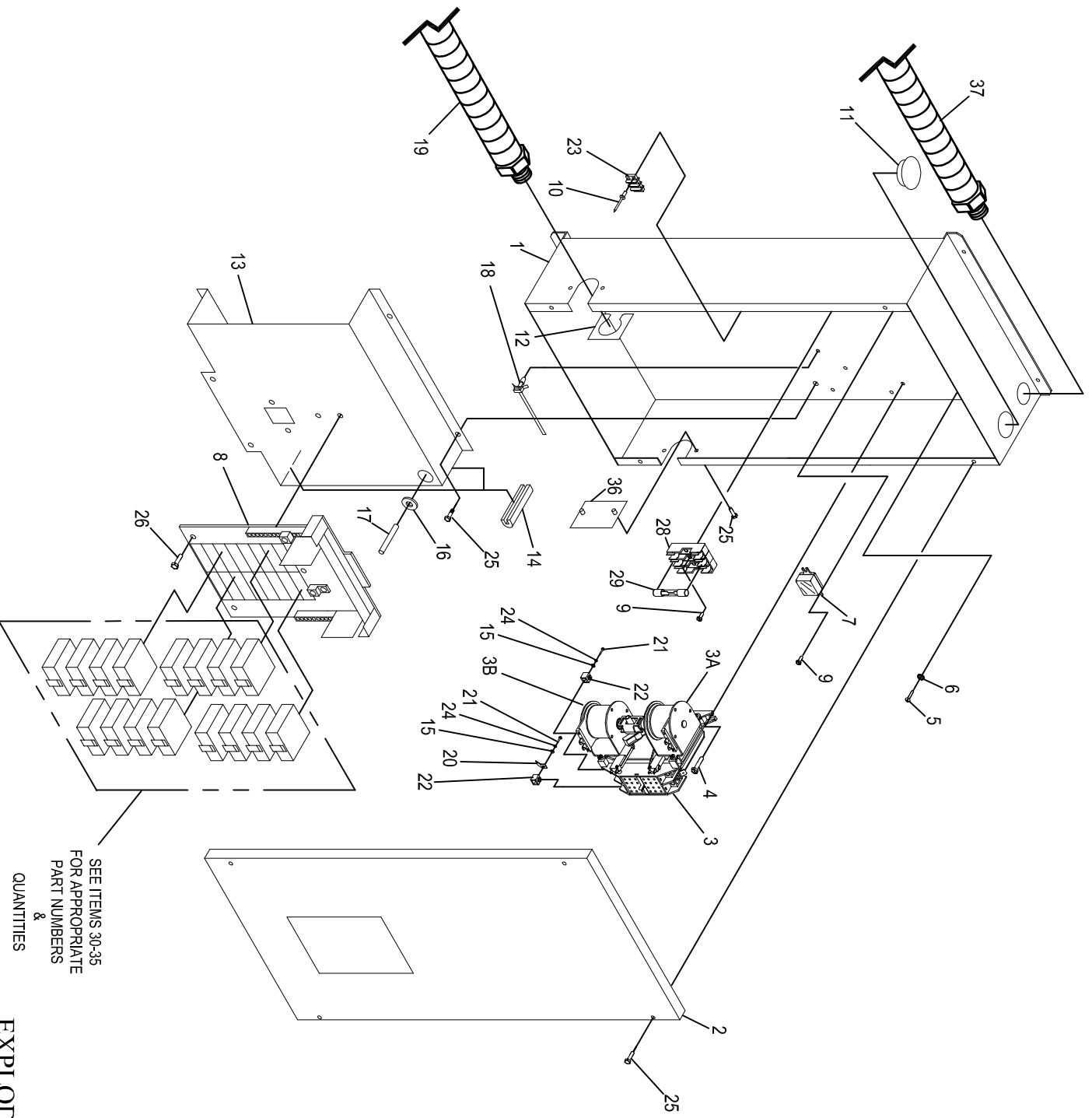


# GROUP D



SEE ITEMS 30-35  
FOR APPROPRIATE  
PART NUMBERS  
&  
QUANTITIES

EXPLODED VIEW: GTS LOAD CENTER  
 DRAWING #: 0H6388

GROUP D

APPLICABLE TO:

ITEM	PART #	QTY.	DESCRIPTION
1	0G80700ST14	1	GTS LOAD CENTER ENCLOSURE GRAY
2	0G81020ST14	1	COVER 10 POS.GTS LOAD CTR GRAY
	0G81030ST14	1	COVER 12 POS.GTS LOAD CTR GRAY
	0G81040ST14	1	COVER 14 POS.GTS LOAD CTR GRAY
	0G81060ST14	1	COVER 16 POS.GTS LOAD CTR GRAY
3	0C2237	1	TRANSFER SWITCH HOME STANDBY 100A 2P 250V
3A	077220	1	COIL UTILITY
3B	077220A	1	COIL STANDBY
4	074908	4	SCREW HHTT M5-0.8 X 10
5	024912	1	SCREW TAPTITE 1/4-20 X 5/8
6	0A1658	1	LOCK WASHER, SPECIAL-1/4"
7	063617	1	RELAY PANEL 12VDC DPDT 10A@240VAC
8	0E7889	1	12CIR L/CENTR 125A/240V (ALSO USED FOR 10 CIRCUIT)
	0F9213	1	16CIR L/CENTR 125A/240V (ALSO USED FOR 14 CIRCUIT)
9	0A1495	4	SCREW HHTT M4-0.7 X 10
10	0J8111	2	RVET POP .156 X .25-.37 ALUM
11	081108	1	PLUG PLASTIC
12	0G8095AST14	1	HARNESS ADAPTER PLATE GRAY
13	0G81300ST14	1	SUBPLATE GTS LOAD CENTER GRAY
14	0F4790	5.28"	U-CHANNEL
15	023897	6	WASHER FLAT #10 ZINC
16	022717A	1	GROMMET 3/8 X 1/16 X 1/4
17	0E6155	1	ARM EXTENDER PIN
18	0G8233A	4	CABLE TIE SELF MOUNTING 4.3LG
19	0G8139	1	HARN GTS-MAIN PNL 10CIR W/NEUT
	0G8140	1	HARN GTS-MAIN PNL 12CIR W/NEUT
	0H6394	1	HARN GTS-MAIN PNL 14CIR W/NEUT
	0G8141	1	HARN GTS-MAIN PNL 16CIR W/NEUT
20	074138	3	LUG QUICK DISCONNECT NI-S 10X45 DEG BRASS / TIN
21	036933	6	SCREW PPHM #10-32X3/8
22	077033	6	LUGSLDSS 1/0-#14X9/16 AL/CU
23	048766	1	BLOCK TERM 20A 2 X 6 X 1100V
24	022152	6	WASHER LOCK #10
25	0A7215	10	SCREW SW 1/4"-20 X 5/8" WITH WASHER
26	066849	2	SCREW HHTT M5-0.8 X 16 (10, 12, 14, 16 CIRCUIT)
27	0H6399A	1	HARNESS LOAD CTR INT.CONN 10-16 (NOT SHOWN)
	0H6399B	1	HARNESS LOAD CTR INT.CONN T1 (NOT SHOWN)
	0H6399C	1	HARNESS LOAD CTR INT.CONN T2 (NOT SHOWN)
28	0D2572	1	FUSEBLOCK 30A 600V 3POS WSQ
29	073590A	3	FUSE 5A
30	0E7888	A/R	CIRCUIT BREAKER 20A 2P
31	0E7888A	A/R	CIRCUIT BREAKER 30A 2P
32	0E7888B	A/R	CIRCUIT BREAKER 15A 1P
33	0E7888C	A/R	CIRCUIT BREAKER 20A 1P
34	0E7888D	A/R	CIRCUIT BREAKER 40A 2P
35	0E7888E	A/R	CIRCUIT BREAKER 50A 2P
36	0G80860ST14	1	HARNESS ENTRY COVER GRAY
37	0H6395	1	HARN GTS-EXT CONN BOX 8KW
	0H6396	1	HARN GTS-EXT CONN BOX 10KW
	0H6397	1	HARN GTS-EXT CONN BOX 14/17KW
	0E7889	1	12CIR L/CENTR 125A/240V (ALSO USED FOR 10 CIRCUIT)

10 12 14 16 CIRCUIT