

RYOBI 10 in. TABLE SAW – MODEL NUMBER RTS10

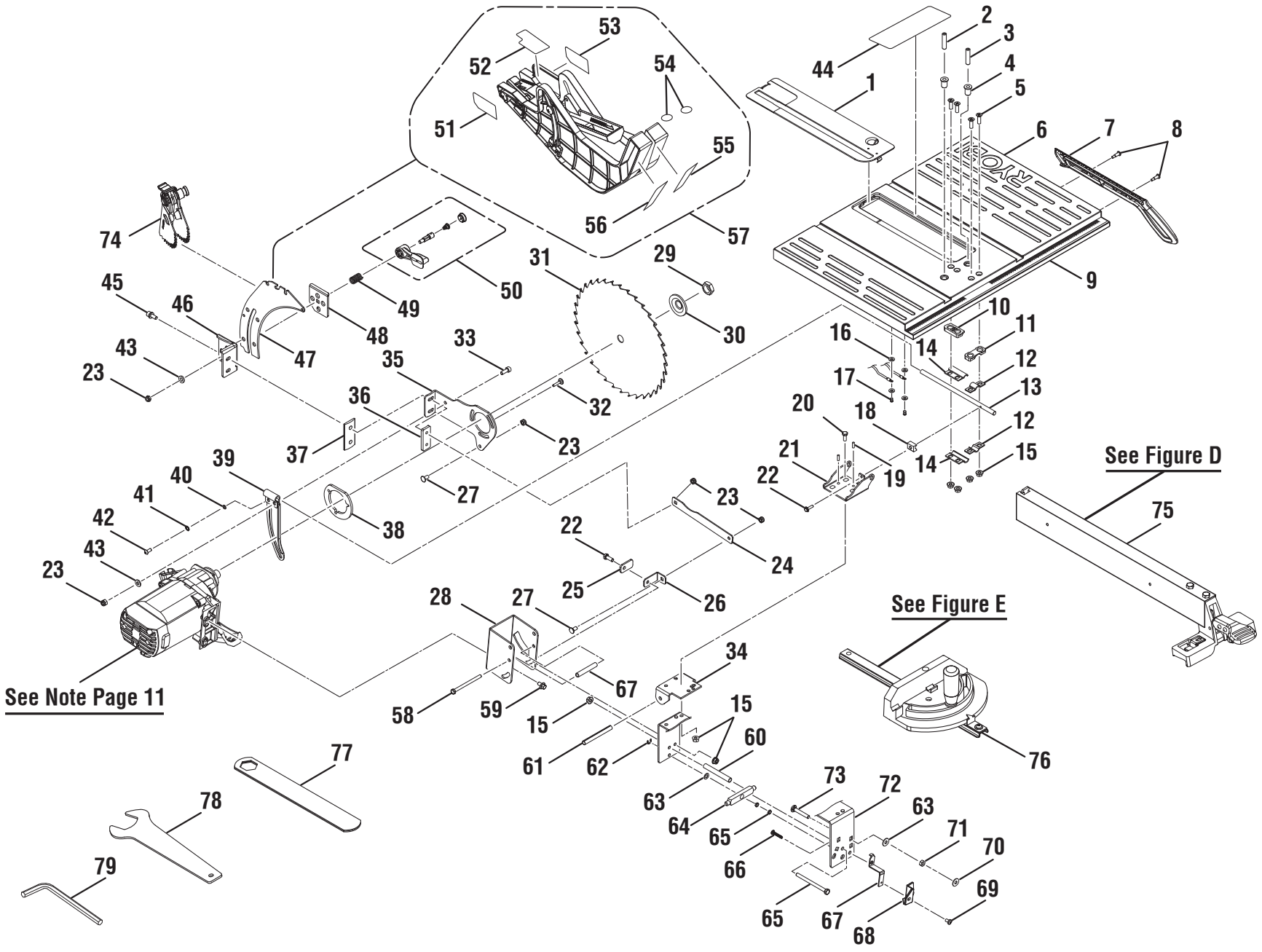


FIGURE A

RYOBI 10 in. TABLE SAW – MODEL NUMBER RTS10

The model number will be found on a label attached to the cabinet. Always mention the model number in all correspondence regarding your **10 in. TABLE SAW** or when ordering parts.

PARTS LIST FOR FIGURE A

KEY NO.	PART NUMBER	DESCRIPTION	QTY	KEY NO.	PART NUMBER	DESCRIPTION	QTY
1	089037007003	Throat Plate Assembly.....	1	29	0101010920	Blade Nut (5/8-18)	1
2	089015001001	Screw (M8 x 30 mm).....	1	30	0101010302	Blade Washer	1
3	089015001013	Screw (M8 x 35 mm).....	1	31	422010025	Saw Blade (24 Tooth).....	1
4	089037007004	Nut (M8)	2	32	089037007017	Screw (M4 x 0.7 mm).....	3
5	410102702	Screw (1/4-20 x 7/8 in, Flat Hd.).....	4	33	089037007018	Screw (M6 x 15 mm).....	1
6	089037007005	Table	1	34	080015001439	Middle Bracket.....	1
7	089037007006	Push Stick.....	1	35	089037007019	Lever	1
8	089037007007	Screw (M4, Pan Hd.).....	2	36	089037007020	Clamp Lock.....	1
9	089037007906	Scale Label	1	37	089037007021	Clamp	1
10	089037007008	Rod Bracket.....	1	38	089037007097	Pad.....	1
11	089015001003	Rod Clamp Base.....	1	39	089037007098	Plate Support.....	1
12	0101010303	Strap (Long)	2	40	412011007	Washer (D5 x D12 x 1.5t).....	2
13	089037007009	Rod	1	41	412021005	Washer (D5)	2
14	089037007010	Short Rod Clamp Base.....	2	42	089037007101	Screw (M5 x 10 mm, Hex Hd.).....	1
15	411062701	Nut (1/4-20, Cheese Hd.).....	10	43	412011701	Washer (D1/4 x D16 x 1t).....	3
16	412042002	Washer (D4 mm)	5	44	089037007907	Warning Label.....	1
17	410132057	Screw (M4 x 8 mm, Pan Hd.).....	2	45	089037007022	Screw (M6 x 20 mm, Hex Hd.).....	2
18	0101010501	Block	1	46	089037007023	Riving Knife Base.....	1
19	414011001	Spring Pin (D4 x 13 mm).....	2	47	089037007702	Spreader/Riving Knife.....	1
20	410162701	Screw (1/4-20 x 3/4 in, Cheese Hd.).....	3	48	089037007024	Clamp Bracket.....	1
21	0101010304	Upper Pivot Bracket	1	49	089037007096	Spreader/Riving Knife Spring	1
22	089037007011	Screw (M5 x 20 mm, Hex Hd.).....	1	50	089037007709	Riving Knife Handle Assembly.....	1
23	411071001	Lock Nut (M6)	5	51	089037007912	Outer Guard Warning Label	1
24	089037007012	Pull Rod	1	52	089037007908	Warning Label (Upper Barrier)	1
25	089037007013	Support Board	1	53	089037007911	Inner Guard Warning Label.....	1
26	089037007014	Mounting Bracket	1	54	089110113913	No Hands Warning Label.....	2
27	089037007015	Bolt	2	55	089037007909	Blade Guard Warning Label - Right.....	1
28	089037007016	Motor Bracket.....	1	56	089037007910	Blade Guard Warning Label - Left	1

RYOBI 10 in. TABLE SAW – MODEL NUMBER RTS10

The model number will be found on a label attached to the cabinet. Always mention the model number in all correspondence regarding your **10 in. TABLE SAW** or when ordering parts.

PARTS LIST FOR FIGURE A

KEY NO.	PART NUMBER	DESCRIPTION	QTY
57	089037007700	Blade Guard Assembly (Inc. Key Nos. 51-56)	1
58	080015001437	Screw (1/4-20 x 3-1/4 in, Hex Hd.)	2
59	410162003	Screw (M6 x 18 mm, Cheese Hd.)	3
60	0101010905	Spacer (D9.5 x 68 mm)	2
61	414011002	Pin (D8 x 90 mm)	1
62	089037007029	C-Ring	1
63	411071001	Washer (D1/4 x D16 x 2t)	6
64	089037007033	Block	1
65	089037007034	Hex Nut (3/8-16)	2
66	089037007031	Screw (M8 x 9.5 mm, Hex Hd.)	1
67	089037007030	Indicator Bracket	1
68	089037007032	Indicator	1
69	089110101066	Screw w/Washer (M4 x 12 mm, Pan Hd.)	1

KEY NO.	PART NUMBER	DESCRIPTION	QTY
70	089037007102	Washer (D6.5 x D20 x 1.6t)	3
71	080015001455	Hex Nut (1/4-20)	1
72	089037007036	Work Plate	1
73	089037007035	Bolt (1/4-20 x 40 mm)	1
74	089037007701	Anti-Kickback Pawl Assembly	1
75	089037007706	Rip Fence Assembly	1
76	089037007707	Miter Gauge Assembly	1
77	0101010312	Wrench (Closed End)	1
78	0101010313	Wrench (Open End)	1
79	0101140903	Hex Key (M5 x 75 mm)	1

Not Shown:

987000864 Operator's Manual (089037008193) 1
 5-13-10
 (Rev:03)

RYOBI 10 in. TABLE SAW – MODEL NUMBER RTS10

The model number will be found on a label attached to the cabinet. Always mention the model number in all correspondence regarding your **10 in. TABLE SAW** or when ordering parts.

PARTS LIST FOR FIGURE B

KEY NO.	PART NUMBER	DESCRIPTION	QTY	KEY NO.	PART NUMBER	DESCRIPTION	QTY
1	089037007037	Cabinet	1	19	089037007901	Warning Label.....	1
2	080015001473	Screw (M4 x 7 mm, Flat Hd.)	6	20	984406003	Switch Key.....	1
3	089037007904	Front Panel Label.....	1	21	089110109712	Switch Assembly (Inc. Key No. 20).....	1
4	080015001475	Washer (D6.5 x D16x 2t)	1	22	089037007044	Plate.....	1
5	080015001455	Hex Nut (1/4-20)	1	23	0101040203	Cord Clamp	1
6	089037007038	Lock Lever	1	24	410192002	Screw (M4 x 16 mm, Pan Hd.).....	2
7	411071001	Washer (D1/4 x D16 x 1t).....	2	25	080015001486	Screw (M6 x 25 mm, Cheese Hd.).....	5
8	0101140904	Spring	1	26	089037007905	Data Label.....	1
9	089037007039	Lock Button	1	27	0000120817	Screw (M8 x 19 mm, Pan Hd.).....	3
10	089037007040	Hand Wheel Cap.....	1	28	0131010210	Cord Clamp	1
11	0101140203	Screw (Special, Handwheel).....	1	29	089037007046	Switch Box	1
12	0152010204	Handle Knob	1	30	0121010235	Power Cord Bushing (Grommet).....	1
13	412011712	Washer (D1/4 x D13 x 1.5t).....	1	31	089037007045	Power Cord.....	1
14	089037007041	Hand Wheel	1	32	089037007902	Warning Label.....	1
15	411072702	Lock Washer (D1/4-20).....	1	33	089037007105	Bolt (1/4-20 x 1-3/8 in.).....	4
16	414011003	Spring Pin (D4 x 16 mm).....	1	34	411062701	Nut (1/4-20 x 10 mm, Cheese Hd.).....	4
17	089037007042	Elevating Shaft (3/8-16 x 137 mm)	1	35	089037007708	Stand Assembly (Inc. Key Nos. 1-8, See Figure C)	1
18	410601004	Screw (M4 x 18 mm).....	4				

RYOBI 10 in. TABLE SAW – MODEL NUMBER RTS10

The model number will be found on a label attached to the cabinet. Always mention the model number in all correspondence regarding your **10 in. TABLE SAW** or when ordering parts.

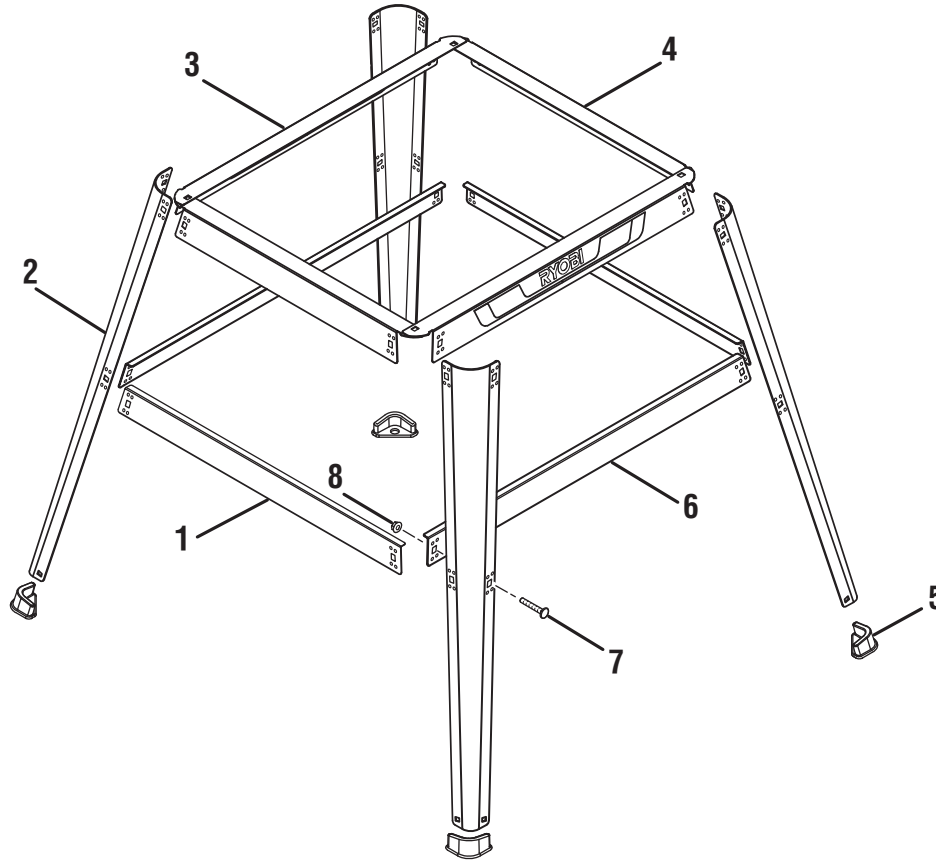


FIGURE C

PARTS LIST FOR FIGURE C

KEY NO.	PART NUMBER	DESCRIPTION	QTY	KEY NO.	PART NUMBER	DESCRIPTION	QTY
1	089037007093	Lower Side Brace	2	5	089037007094	Foot.....	4
2	089037007089	Leg.....	4	6	089037007091	Lower Brace.....	2
3	089037007088	Upper Brace	2	7	089037007092	Bolt (1/4-20 x 12 mm).....	16
4	089037007090	Upper Side Brace	2	8	411062701	Nut (1/4-20 x 10 mm).....	16

RYOBI 10 in. TABLE SAW – MODEL NUMBER RTS10

The model number will be found on a label attached to the cabinet. Always mention the model number in all correspondence regarding your **10 in. TABLE SAW** or when ordering parts.

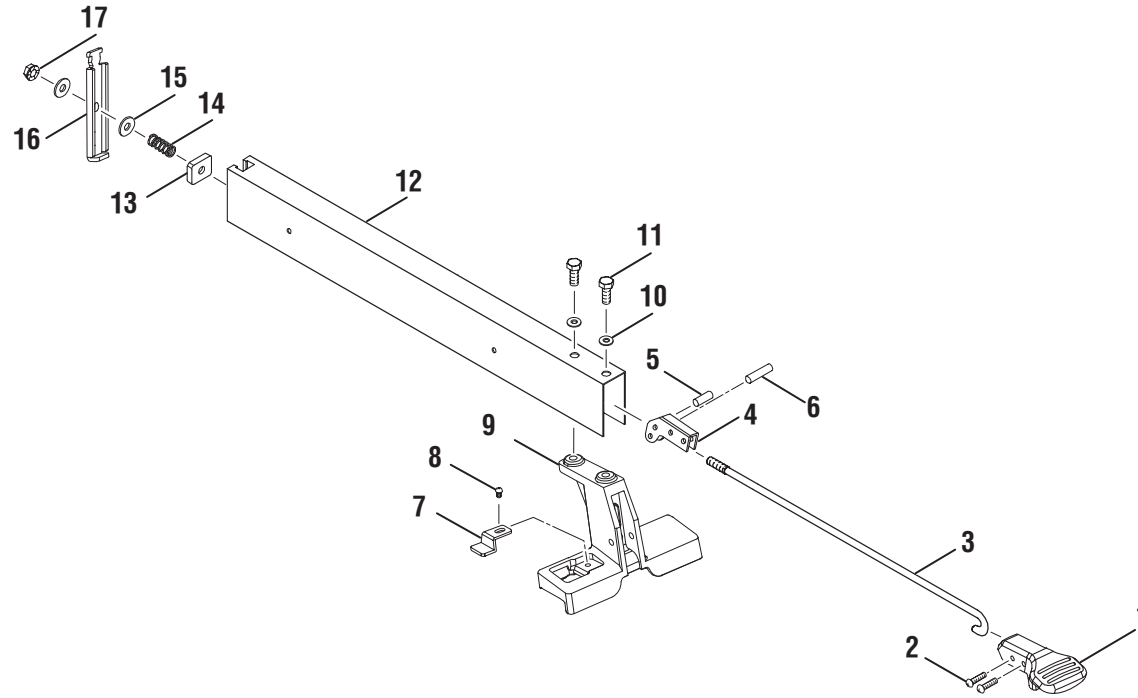


FIGURE D

PARTS LIST FOR FIGURE D

KEY NO.	PART NUMBER	DESCRIPTION	QTY	KEY NO.	PART NUMBER	DESCRIPTION	QTY
1	089037007080	Locking Lever	1	10	412042702	Lock Washer (1/4-20).....	2
2	089037007081	Screw (M8 x 5/8 in.).....	2	11	410012701	Screw (1/4-20 x 1/2 in, Hex Hd.)	2
3	089037007082	Lock Rod	1	12	089037007084	Fence	1
4	089037007083	Handle Bar	1	13	0101010211	Block.....	1
5	414011028	Spring Pin (D4 x 10.5 mm).....	1	14	0101010916	Spring	1
6	414011003	Spring Pin (D4 x 20 mm).....	1	15	412012030	Washer (D6.5 x D16 x 1.5t).....	2
7	0101140305	Pointer	1	16	089037007085	Rear Clamp.....	1
8	410542702	Screw (5/32-32 x 1/4 in.)	1	17	411072702	Lock Nut (1/4-20).....	1
9	089015001008	Front Block	1				

RYOBI 10 in. TABLE SAW – MODEL NUMBER RTS10

The model number will be found on a label attached to the cabinet. Always mention the model number in all correspondence regarding your **10 in. TABLE SAW** or when ordering parts.

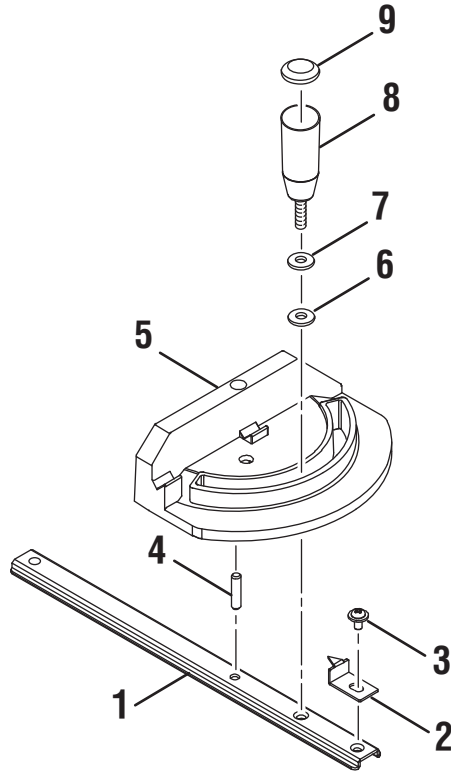
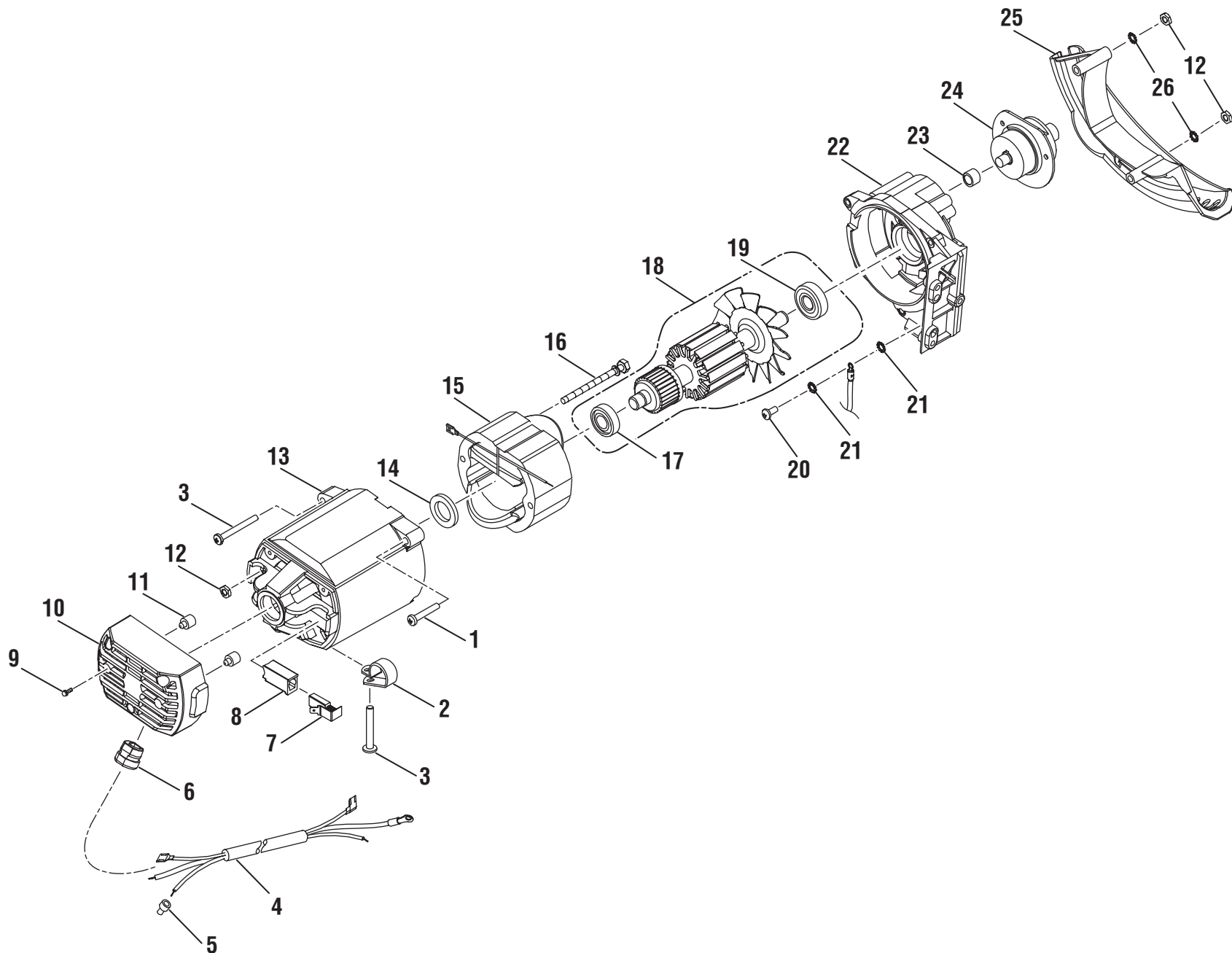


FIGURE E

PARTS LIST FOR FIGURE E

KEY NO.	PART NUMBER	DESCRIPTION	QTY	KEY NO.	PART NUMBER	DESCRIPTION	QTY
1	089015001009	Miter Gauge Rod	1	6	080015001475	Washer (D6.5 x D16 x 2t)	1
2	080015001563	Pointer	1	7	412012003	Washer (D6.5 x D16 x 2t)	1
3	410332701	Screw (3/16 in. x 1/4 in.)	1	8	089037007087	Miter Gauge Knob	1
4	089015001010	Pin	1	9	0131010237	Miter Gauge Cap	1
5	089037007086	Miter Gauge	1				

RYOBI 10 in. TABLE SAW – MODEL NUMBER RTS10



SECTION "A"

RYOBI 10 in. TABLE SAW – MODEL NUMBER RTS10

The model number will be found on a label attached to the cabinet. Always mention the model number in all correspondence regarding your **10 in. TABLE SAW** or when ordering parts.

PARTS LIST FOR SECTION "A"

KEY NO.	PART NUMBER	DESCRIPTION	QTY	KEY NO.	PART NUMBER	DESCRIPTION	QTY
1	0101010807	Screw w/Washer (M5 x 30 mm).....	1	15	089037007703	Field Assembly.....	1
2	0121010242	Wire Clamp	1	16	089037007052	Screw w/Washer (M5 x 70 mm, Hex Hd.).....	2
3	410272004	Screw (M5 x 75 mm).....	2	17	089037007053	Ball Bearing (6001ZZ C3).....	1
4	089037007047	Motor Cord	1	18	089037007704	Armature Assembly (Inc. Key Nos. 17 and 19).....	1
5	089037007048	Wire Connector.....	1	19	089037007054	Ball Bearing (6201 ZZ C3).....	1
6	451010003	Strain Relief.....	1	20	410174721	Screw (8-32 x 3/8 in, Truss Hd.)	1
7	0301025006	Carbon Brush.....	2	21	412042002	Lock Washer (D4).....	2
8	089037007050	Brush Holder.....	2	22	089037007055	Bearing Housing	1
9	410252001	Screw w/Washer (M4 x 12 mm).....	3	23	420110004	Needle Bearing	1
10	089037007049	Motor End Cap	1	24	089037007705	Arbor Assembly	1
11	0101010209	Pad.....	2	25	089037007060	Lower Blade Guard.....	1
12	411012001	Hex Nut (M5).....	4	26	412042001	Lock Washer (D5).....	2
13	089037007051	Motor Housing	1				
14	412061001	Wavy Washer (M6 x 16 mm)	1				

NOTE: The assembly shown represents an important part of the double insulated system. To avoid the possibility of alteration or damage to the system, service should be performed by your nearest Ryobi Authorized Service Center. Contact your nearest Ryobi Authorized Service Center for service.