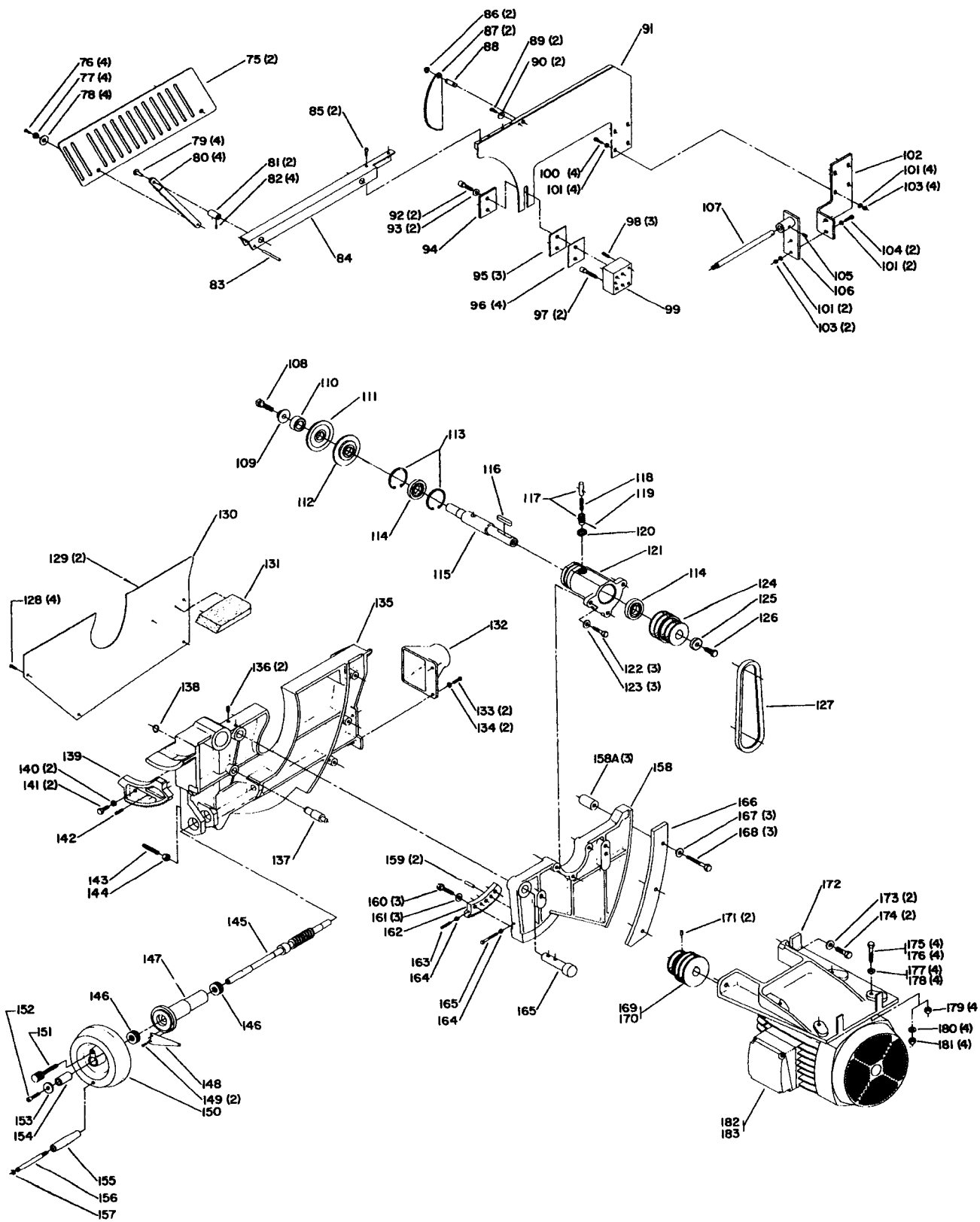


REPLACEMENT PARTS

REF. NO.	PART NUMBER	DESCRIPTION
1	422-28-109-0001	EXTENSION WING L.H.
2	1243502	(DIN 125) M10 FLAT WASHER
3	1246019	(DIN 933) M10 X 35MM HEX HD SCR
4	1246009	(DIN 913) M8 X 10MM HEX SOC SET SCR
5	1246112	(DIN 916) M8 X 35MM HEX SOC SET SCR
6	1246072	(DIN 912) M10 X 80MM HEX SOC HD SCR
7	422-28-363-0001	INSERT ASSY, /INCL:
8	1243321	(DIN 916) M6 X 10MM HEX SOC SET SCR
9	1246109	(DIN 1481) M5 X 16MM SPRING PIN
10	422-28-091-0001	TABLE
11	422-28-109-0002	EXTENSION WING R.H.
12	422-28-089-0003	GUIDE SUPPORT
13	1243502	(DIN 125) M10 FLAT WASHER
14	1246035	(DIN 933) M10 X 30MM HEX HD SCR
17	1246130	(DIN 84) M6 X 16MM CHEESE HD SCR
18	422-28-123-0001	PANEL
19	422-28-132-0002	TILT SCALE
20	438-01-017-0173	ON BUTTON W/SWITCH
21	438-01-017-0172	OFF BUTTON W/SWITCH
22	1243501	(DIN 84) M4 X 10MM CHEESE HD SCR
23	438-01-001-0043	ELECTRICAL BOX
24	422-28-031-0002	ELECTRICAL BOX COVER
25	1246117	(DIN 963) M4 X 10MM FLAT HD SCR
26	438-01-001-0054	ELECTRICAL BOX
27	901-06-133-1263	SCR
28	1246021	(DIN 963) M5 X 10MM FLAT HD SCR
29	1246107	(DIN 963) M8 X 50MM FLAT HD SCR
30	422-28-042-0001	ECCENTRIC
31	1243398	(DIN 934) M8 HEX NUT
32	1246035	(DIN 933) M10 X 30MM HEX HD SCR
33	422-28-072-0003	PLATE
34	1246024	(DIN 1481) M6 X 20MM SPRING PIN
35	422-28-095-0001	TRUNNION
36	422-28-079-0014	NUT
37	432-07-017-0004	THRUST BEARING
38	422-28-005-0001	UPPER BASE
39	1246018	(DIN 933) M10 X 25MM HEX HD SCR
40	1246047	(DIN 84) M5 X 16MM CHEESE HD SCR
41	418-10-072-0003	PLATE
42	901-06-133-1263	SCR
43	418-10-031-0004	ELECTRICAL BOX COVER
44	1243395	(DIN 934) M5 HEX NUT
45	438-01-001-0042	ELECTRICAL BOX
46	1330478	BEVEL RACK KIT (SEE NOTE D)
47	422-28-100-0002	WHEEL-TILT
48	422-28-112-0003	LOCK SCR
49	1246053	(DIN 912) M8 X 25MM HEX SOC HD SCR
50	422-28-079-0011	WASHER
51	428-06-067-0001	HANDLE
52	428-06-111-0001	STUD
53	1246026	EXT RET RING
54	422-31-101-0002	17 X 19MM OPEN END WRENCH
55	428-06-101-0002	3MM HEX WRENCH
56	422-29-101-0002	4MM HEX WRENCH
57	432-07-101-0004	5MM HEX WRENCH
58	1343434	ARBOR WRENCH

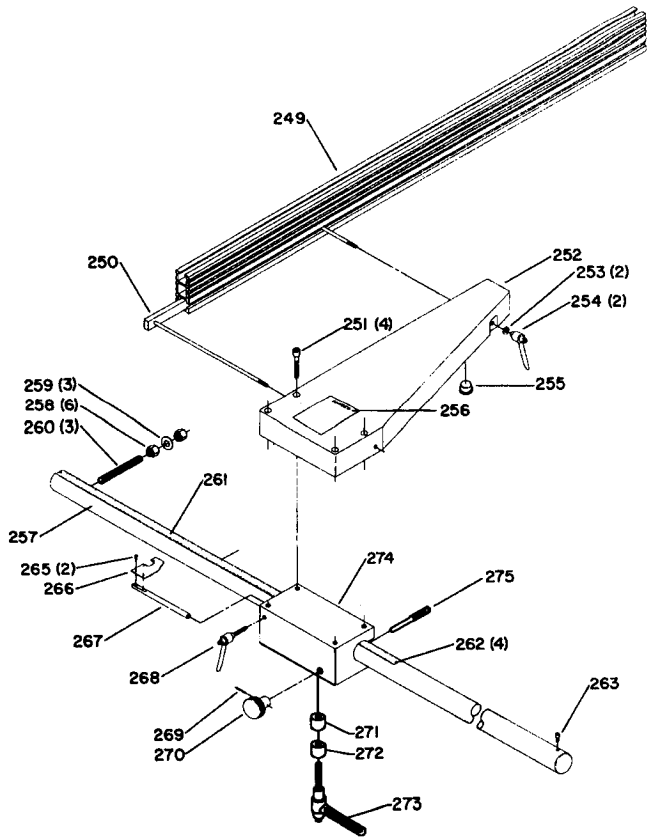


REPLACEMENT PARTS

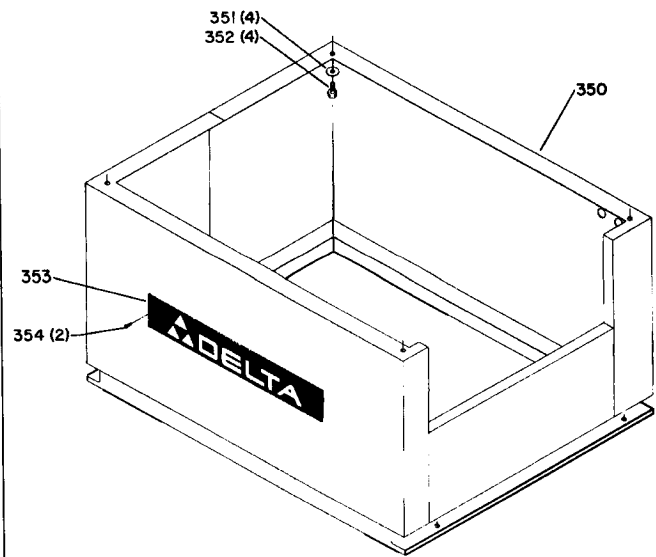
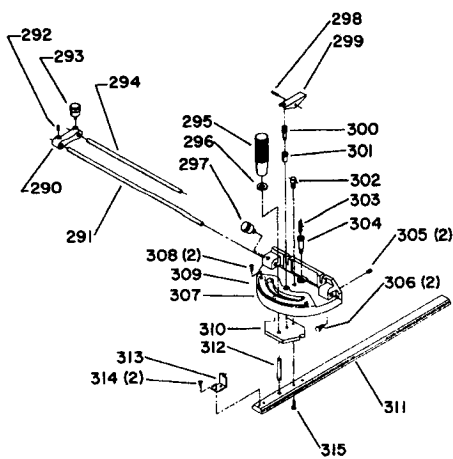
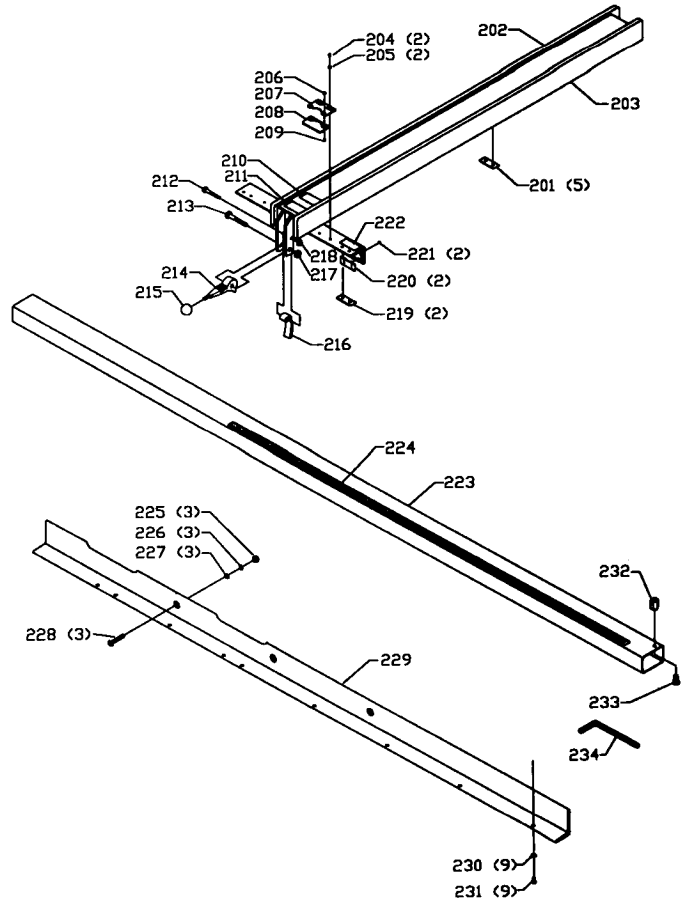
<u>REF. NO.</u>	<u>PART NUMBER</u>	<u>DESCRIPTION</u>	<u>REF. NO.</u>	<u>PART NUMBER</u>	<u>DESCRIPTION</u>
*	1330000	BLADE GUARD, CONST OF:	130	422-28-031-0001	COVER
75	1330062	BLADE GUARD	131	422-28-010-0002	WOOD BLOCK
76	1246155	(DIN 963) M6 X 12MM FLAT HD SCR (SEE NOTE A)	132	422-28-026-0001	DUST CHUTE
77	422-31-017-0005	BUSHING	133	1246113	(DIN 84) M8 X 20MM CHEESE HD SCR
78	422-31-104-0001	WASHER	134	1243526	(DIN 125) M8.4 FLAT WASHER
79	422-31-071-0002	PIN	135	422-30-102-0001	YOKE
80	1330061	BAR	136	1246121	(DIN 914) M10 X 15MM HEX SOC SET SCR
81	422-31-017-0001	BUSHING	137	1330071	PIN
82	1246137	(DIN 913) M5 X 8MM HEX SOC SET SCR (SEE NOTE A)	138	1330075	EXT RET RING
83	1246193	(DIN 1481) M6 X 60MM SPRING PIN	139	1330478	BEVEL RACK KIT (SEE NOTE D)
84	1330063	GUARD SUPPORT	140	1243502	(DIN 125) M10 FLAT WASHER
85	1246056	(DIN 912) M10 X 12MM HEX SOC HD SCR	141	1246018	(DIN 933) M10 X 25MM HEX HD SCR
86	1243497	EXT RET RING	142	1246075	(DIN 1481) M8 X 24MM SPRING PIN
87	1330064	ANTI-KICKBACK FINGER	143	1246120	(DIN 915) M12 X 45MM HEX SOC SET SCR
88	422-31-071-0003	PIN	144	1243476	(DIN 934) M12 HEX NUT
89	1243379	(DIN 912) M6 X 10MM HEX SOC HD SCR	145	1330477	ELEV RACK KIT (SEE NOTE D)
90	422-31-104-0007	WASHER	146	432-07-017-0004	THRUST BEARING
91	1330059	SPLITTER	147	422-28-107-0001	WHEEL HUB
92	1246035	(DIN 933) M10 X 30MM HEX HD SCR	148	422-28-075-0003	POINTER
93	1243502	(DIN 125) M10 FLAT WASHER	149	1243394	(DIN 84) M5 X 10MM CHEESE HD SCR
94	1330068	SPACER 3/16"	150	422-28-100-0001	WHEEL-ELEVATING
95	1330069	SPACER 1.52MM	151	422-28-112-0002	LOCKING SCR
96	1330070	SPACER 0.9MM	152	1243530	(DIN 912) M8 X 30MM HEX SOC HD SCR
97	1246096	(DIN 912) M10 X 40MM HEX SOC HD SCR	153	428-07-104-0010	WASHER
98	1246011	(DIN 913) M8 X 20MM HEX SOC SET SCR	154	422-28-017-0004	BUSHING
99	1330067	SPACER	155	428-06-067-0001	HANDLE
100	1246015	(DIN 933) M6 X 20MM HEX HD SCR	156	428-06-111-0001	STUD
101	904-01-010-1604	5/16" FLAT WASHER	157	1246026	EXT RET RING
102	1330066	SPLITTER BRACKET	158	422-28-314-0001	ELEVATING BRACKET ASSY, INCL: (SEE NOTE B)
103	1243456	(DIN 934) M6 HEX NUT	158A		SET OF THREE (3) SPACERS NOT AVAILABLE AS AN INDIVIDUAL (SEE NOTE B)
104	1246153	(DIN 933) M6 X 25MM HEX HD SCR	159	1246129	(DIN 1481) M8 X 28MM SPRING PIN
105	1246009	(DIN 913) M8 X 10MM HEX SOC SET SCR	160	1246019	(DIN 933) M10 X 35MM HEX HD SCR
106	1330060	GUARD CLAMP	161	1243502	(DIN 125) M10 FLAT WASHER
107	1330065	SPLITTER SUPPORT SHAFT	162	1330477	ELEV RACK KIT (SEE NOTE D)
108	422-28-112-0001	ARBOR SCR	163	1246127	(DIN 916) M6 X 30MM HEX SOC SET SCR
109	422-28-079-0008	RETAINER	164	1243456	(DIN 934) M6 HEX NUT
110	422-28-104-0002	COLLAR	165	1246128	(DIN 933) M6 X 40MM HEX HD SCR
111	422-28-103-0001	OUTER BLADE FLANGE	166	422-28-014-0006	BRACKET
112	1330385	INNER BLADE FLANGE (SEE NOTE C)	167	1243502	(DIN 125) M10 FLAT WASHER
113	1246126	INT RET RING	168	1246066	(DIN 931) M10 X 70MM HEX HD SCR
114	1245099	BEARING	169	422-28-130-0002	MOTOR PULLEY (3PH MOTOR)
115	1330492	ARBOR	170	422-28-130-0003	MOTOR PULLEY (1PH MOTOR)
116	422-28-079-0013	KEY	171	1246009	(DIN 913) M8 X 10MM HEX SOC SET SCR
117	422-28-368-0001	LOCK ASSY, INCL:	172	422-28-072-0001	MOTOR PLATE
118	428-07-122-0001	SPRING	173	1243556	(DIN 125) M13 FLAT WASHER
119	1246119	(DIN 1481) M3 X 16MM SPRING PIN	174	1246030	(DIN 933) M12 X 35MM HEX HD SCR
120	422-28-079-0009	LOCK NUT	175	1246099	(DIN 931) M10 X 50MM HEX HD SCR (3PH MOTOR)
121	422-28-014-0002	ARBOR BRACKET	176	901-01-060-0646	3/8-16 X 2" HEX HD SCR (1PH MOTOR)
122	1246019	(DIN 933) M10 X 35MM HEX HD SCR	177	1243502	(DIN 125) M10 FLAT WASHER (3PH MOTOR)
123	1243502	(DIN 125) M10 FLAT WASHER	178	904-01-010-1615	FLAT WASHER (1PH MOTOR)
124	422-28-130-0001	ARBOR PULLEY	179	1243496	(DIN 934) M10 HEX NUT (3PH MOTOR)
125	422-28-079-0012	WASHER	180	904-02-020-1704	3/8" LOCK WASHER (1PH MOTOR)
126	1246125	(DIN 933) M12 X 25MM HEX HD SCR	181	902-01-040-1026	3/8-16 HEX NUT (1PH MOTOR)
127	422-28-133-0001	SET OF (2) V-BELTS	182	438-02-314-0932	MOTOR (3PH, 7.5HP, 60HZ, 200-220/440V)
128	1246130	(DIN 84) M6 X 16MM CHEESE HD SCR	183	83-004	MOTOR (1PH, 5.0HP, 60HZ, 230V)
129	901-25-033-1383	#8 X 1" WOOD SCR			

* NOT SHOWN ASSEMBLED

**PARTS ILLUSTRATED BELOW FOR
USE WITH MODEL 34-790 SAW**



**PARTS ILLUSTRATED BELOW FOR
USE WITH MODEL 36-790 SAW**

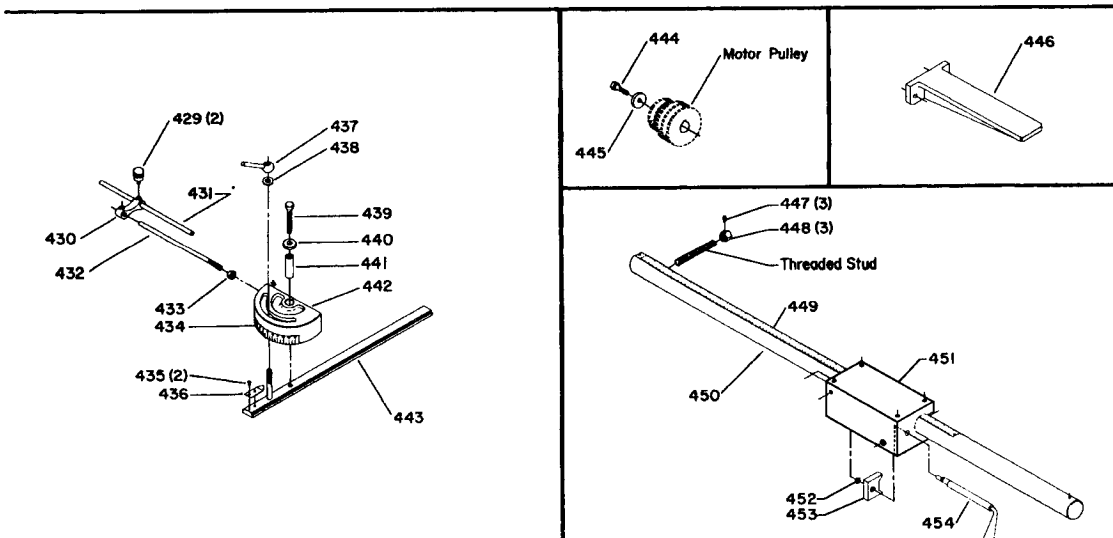
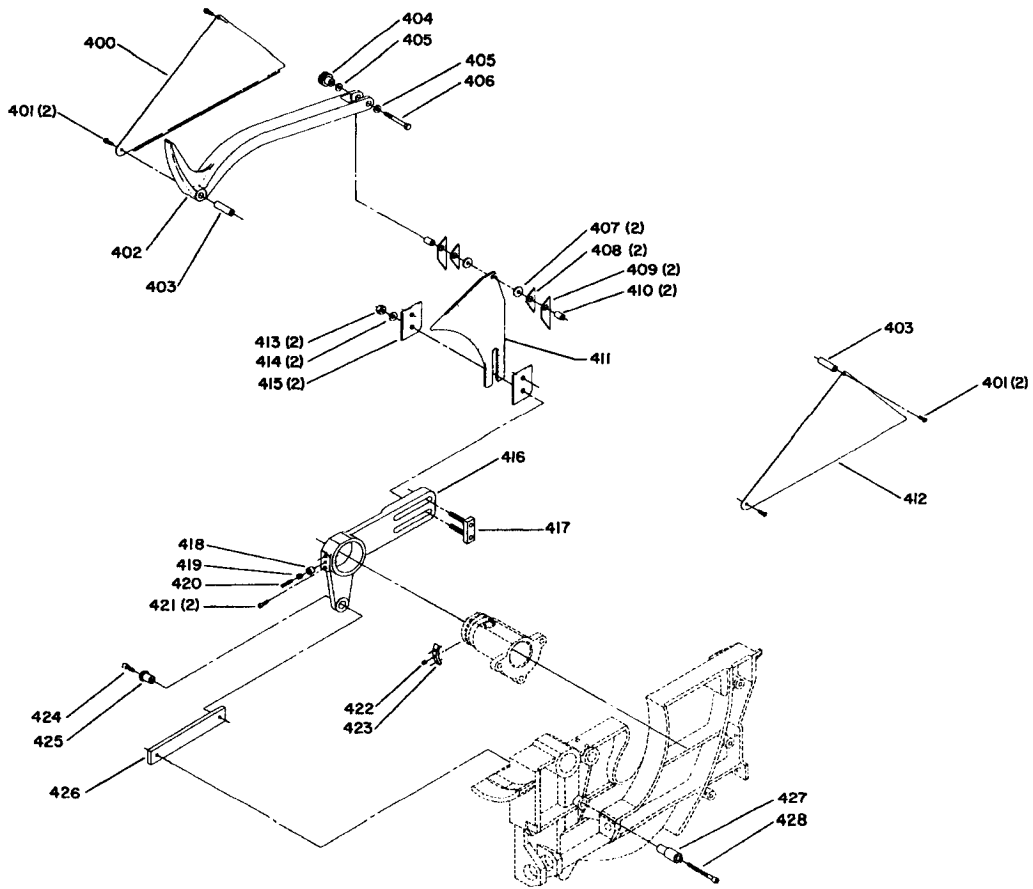


REPLACEMENT PARTS

REF. NO.	PART NUMBER	DESCRIPTION	REF. NO.	PART NUMBER	DESCRIPTION
*	78-921	FENCE ASSY, INCL:	260	422-28-111-0001	THREADED STUD
201	1350019	GLIDE PAD	261	422-28-132-0004	SCALE
202	1351049	LEFT BOARD KIT (SEE NOTE E)	262	428-06-079-0001	RIVIT
203	1351050	RIGHT BOARD KIT (SEE NOTE E)	263	1243379	(DIN 912) M6 X 10MM HEX SOC HD SCR
204	1350275	#10-32 X 3/8" ROUND HD SCR	265	1243501	(DIN 84) M4 X 10MM CHEESE HD SCR
205	1350276	FLAT WASHER	266	422-29-075-0003	POINTER
206	1350315	#10-32 HEX NUT	267	422-28-108-0002	POINTER STEM
207	1350049	CURSOR MOUNT	268	422-30-138-0004	KNOB
208	1350048	CURSOR	269	1246118	(DIN 1481) M3 X 24MM SPRING PIN
209	1350316	#10-32 X 1/2" FLAT HD SCR	270	422-29-138-0006	KNOB
210	1350077	FLAG DECAL	271	1330394	UPPER CLAMP BLOCK
211	1350156	NAMEPLATE	272	1330395	LOWER CLAMP BLOCK
212	1350277	1/4-20 X 1 3/4" HEX HD SCR	273	1330396	LOCK HANDLE W/STUD
213	1350278	SPECIAL SCR	274	1330393	GUIDE
214	1350053	CAM HANDLE ASSY	275	422-28-051-0003	GUIDE RAIL GEAR
215	1350050	KNOB	*	1330074	MITER GAGE, CONST OF:
216	1350056	CAM FOOT ASSY	290	422-29-089-0001	SUPPORT
217	1350279	3/8-16 LOCK NUT	291	422-29-108-0002	ROD
218	1350280	1/4-20 LOCK NUT	292	1243321	(DIN 916) M6 X 10MM HEX SOC SET SC
219	1350019	GLIDE PAD	293	422-29-138-0004	KNOB
220	1350051	GLIDE PAD	294	422-29-108-0001	STOP ROD
221	1350492	3/8-16 X 5/16" HEX SOC SET SCR	295	422-31-067-0003	HANDLE
222	1350079	DECAL	296	1243502	(DIN 125) M10 FLAT WASHER
223	1352279	GUIDE TUBE ASSY, INCL:	297	422-29-138-0003	KNOB
224	1352280	SCALE (SEE NOTE F)	298	1246119	(DIN 1481) M3 X 16MM SPRING PIN
225	1352277	1/2-13 HEX NUT	299	422-31-067-0001	LEVER
226	1351766	LOCK WASHER	300	422-31-071-0004	PIN
227	1352276	FLAT WASHER	301	422-31-017-0002	BUSHING
228	1352275	1/2-13 X 2" HEX SOC FL HD SCR	302	422-31-071-0005	PIN
229	1352278	FRONT RAIL	303	422-31-122-0001	SPRING
230	1350293	1/4" LOCK WASHER	304	422-31-071-0011	HINGE PIN
231	1350295	1/4-20 X 1/2" HEX HD SCR	305	1246159	(DIN 914) M5 X 5MM HEX SOC SET SCR
232	1350298	1/4-20 X 7/8" SPECIAL NUT	306	1330076	(DIN 933) M5 X 10MM HEX HD SC
233	1350295	1/4-20 X 1/2" HEX HD SCR	307	422-31-012-0001	MITER GAGE, INCL:
234	955-03-020-2200	5/16" HEX WRENCH	308	428-06-079-0001	RIVIT
249	422-28-043-0001	RIP FENCE	309	422-29-132-0001	SCALE
250	422-28-079-0003	RETAINER	310	422-31-088-0001	STOP
251	1243320	(DIN 912) M10 X 50MM HEX SOC HD SCR	311	1330073	GUIDE BAR, INCL:
252	422-28-014-0003	RIP FENCE BRACKET	312	422-31-111-0002	STUD (SEE NOTE A)
253	1243526	(DIN 125) M8.4 FLAT WASHER	313	422-29-075-0001	POINTER
254	422-28-138-0002	KNOB	314	1243501	(DIN 84) M4 X 10MM CHEESE HD SCR
255	1330072	NYLON BUSHING (SEE NOTE A)	315	1246051	(DIN 912) M5 X 12MM HEX SOC HD SCR
256	422-16-754-0003	WARNING LABEL	350	422-28-005-0003	LOWER BASE
*	34-796	GUIDE RAIL ASSY, CONST OF:	351	428-06-104-0004	WASHER
257	422-28-355-0002	GUIDE RAIL, INCL:	352	1246115	(DIN 933) M10 X 20MM HEX HD SCR
258	1246114	(DIN 934) M16 HEX NUT	353	428-07-137-0001	NAMEPLATE
259	904-01-010-1613	11/16" FLAT WASHER	354	428-06-079-0001	RIVIT

* NOT SHOWN ASSEMBLED

PARTS ILLUSTRATED BELOW FOR USE WITH EARLY MODELS ONLY



REPLACEMENT PARTS

<u>REF. NO.</u>	<u>PART NUMBER</u>	<u>DESCRIPTION</u>	<u>REF. NO.</u>	<u>PART NUMBER</u>	<u>DESCRIPTION</u>
	422-28-354-0001	BLADE GUARD, CONST OF:	428	1246123	(DIN 912) M8 X 70MM HEX SOC HD
400	422-28-054-0002	BLADE GUARD L.H.	*	1330074	MITER GAGE, CONST OF:
401	1246130	(DIN 84) M6 X 16MM CHEESE HD SCR	429	422-29-138-0004	KNOB
402	422-28-014-0001	BRACKET	430	422-29-089-0001	STOP SUPPORT
403	422-29-104-0001	SPACER	431	422-29-108-0001	STOP ROD
404	422-29-138-0001	KNOB	432	422-28-108-0001	STOP ROD
405	904-01-010-1605	3/8" FLAT WASHER	433	1243496	(DIN 934) M10 HEX NUT
406	1246131	(DIN 933) M8 X 60MM HEX HD SCR	434	422-28-132-0001	SCALE
407	422-29-079-0001	WASHER	435	1246088	(DIN 84) M5 X 6MM CHEESE HD SCR
408	422-29-047-0001	ANTI-KICKBACK FINGER	436	422-28-075-0001	POINTER
409	422-29-047-0002	ANTI-KICKBACK FINGER	437	422-28-067-0001	LOCK LEVER
410	422-29-017-0001	BUSHING	438	904-01-010-1608	5/8" FLAT WASHER
411	422-28-086-0001	SPLITTER	439	1246036	(DIN 933) M10 X 60MM HEX HD SCR
412	422-28-054-0003	BLADE GUARD R.H.	440	422-28-079-0001	RETAINER
413	1243496	(DIN 934) M10 HEX NUT	441	422-28-017-0001	BUSHING
414	1243360	(DIN 7980) M10.2 LOCK WASHER	442	422-28-012-0001	MITER GAGE BODY
415	422-28-017-0003	BLADE BUSHING	443	422-28-004-0001	BAR
416	422-28-089-0001	SPLITTER SUPPORT	444	1246115	(DIN 933) M10 X 20MM HEX HD SCR
417	422-28-014-0004	SPLITTER MOUNTING BRACKET	445	418-10-104-0002	WASHER
418	422-28-017-0005	BUSHING	446	422-28-089-0002	SUPPORT
419	1243456	(DIN 934) M6 HEX NUT	447	1243321	(DIN 916) M6 X 10MM HEX SOC SET SCR
420	1246124	(DIN 916) M6 X 25MM HEX SOC SET SCR	448	422-28-079-0007	LOCK NUT
421	1246004	(DIN 912) M6 X 16MM HEX SOC HD SCR	449	422-28-132-0003	RIP SCALE
422	422-28-074-0001	PLUG	450	34-796	GUIDE RAIL ASSY
423	422-28-079-0004	KEY	451	1330392	FENCE KIT
424	1246122	(DIN 912) M8 X 16MM HEX SOC HD SCR	452	1246058	EXT RET RING
425	422-28-017-0002	BUSHING	453	422-28-010-0001	CLAMP BLOCK
426	422-28-055-0003	GUIDE	454	422-28-067-0002	LOCK LEVER
427	422-28-071-0001	PIN			

* NOT SHOWN ASSEMBLED

NOTE A: INSTALL NEW PART WITH LOCTITE TO PREVENT LOOSENING DURING OPERATION.

NOTE B: WHEN REPLACING ELEVATING BRACKET (REF NO 158), OLD SPACERS (REF NO 158A) MUST BE DISCARDED. ELEVATING BRACKET COMES CAST WITH (3) THREE SPACERS ATTACHED, WHICH MUST BE BROKEN OFF AND USED WITH NEW PART.

NOTE C: THIS FLANGE REPLACES THE OLD BEARING GUARD AND OLD INNER BLADE FLANGE WITH A NEW 1-PIECE INNER BLADE FLANGE.

NOTE D: THIS KIT INCLUDES BOTH THE WORM AND RACK. ONLY ONE (1) KIT NEEDS TO BE ORDERED FOR ANY GIVEN SERVICE PROCEDURE. DUE TO WEAR CHARACTERISTICS, IT IS NECESSARY TO REPLACE BOTH WORM AND RACK AT THE SAME TIME!

NOTE E: KIT INCLUDES: BOARD, LAMINATE, T-EDGING AND HARDWARE.

NOTE F: SCALE IS PROVIDED OVERSIZE AND MUST BE CUT TO PROPER LENGTH.

STANDARD SAFETY EQUIPMENT

In order to promote tool safety, Delta International Machinery Corp. strictly enforces the policy of repairing or replacing any damaged or missing standard safety equipment on machines presented to Delta Authorized Service Centers for service/repair. Any product which is presented to a Delta Authorized Service Center for repairs which contains missing or damaged standard safety equipment will have that equipment repaired or replaced and the customer will be charged for any such service/repairs. Customers can avoid such charges only if the missing safety component is supplied to the service center at the time of repair.

This parts list is provided to aid in obtaining service parts. Copies of the instruction and maintenance literature can be obtained through the Delta Technical Publications Department or through your local service outlet.