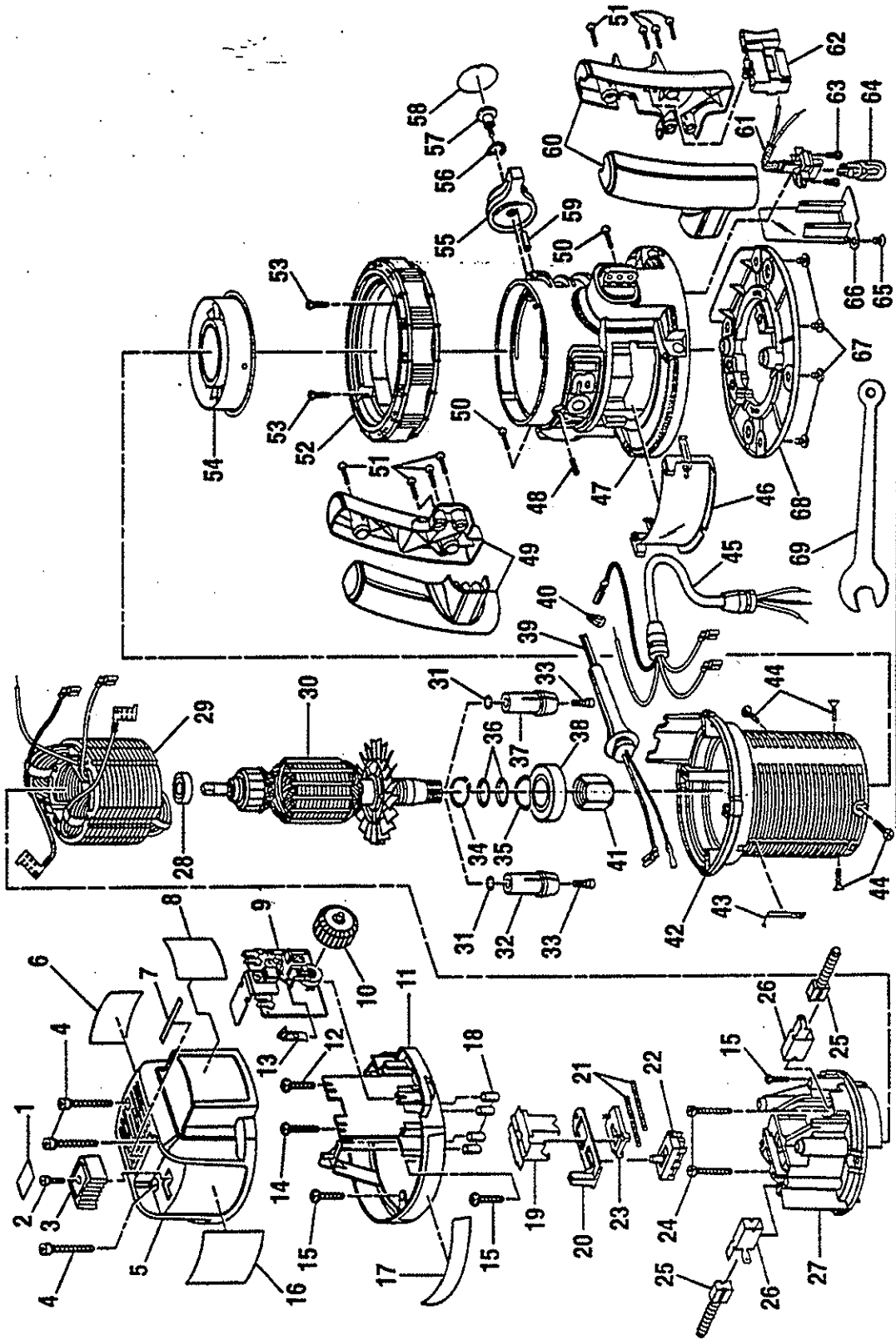


ROUTER

RE170



PARTS LIST FOR AFTER SALES SERVICE

MODEL RE-170

R/	PART NO.	DESCRIPTION	QTY	REF	PART NO.	DESCRIPTION	QTY
1	974323001	SHAFT LOCK LABEL	1	37	974252005	1/4" COLLET ASS'Y (INC. 1 OF #3)	1
2	970855001	SCREW (5-20 X 3/8 in. FIL. HD.)	1	38	968305041	BALL BEARING (6004LLBCM)	1
3	973671001	ACTUATOR BUTTON	1	39	970105024	CORD	1
4	989592002	SCREW (#8-10 X 1-3/8 in. FIL HD)	3	40	623173005	WIRE NUT	1
5	974799001	UPPER END CAP	1	41	973844001	1/2 in. COLLET NUT	1
6	974934001	DATA PLATE	1	42	973657002	MOTOR HOUSING	1
7	974289001	CAUTION LABEL	1	43	973688001	POINTER	1
8	974927001	SPEED CONTROL LABEL	1	44	612556003	SCREW (#8-18X9/16" FLT HD PH)	4
9	974617001	SPEED CONTROL MODULE	1	45	973976003	POWER HANDLE CORD	1
10	974779001	SPEED CONTROL DIAL	1	46	973672001	CHIP SHIELD	1
11	974800001	LOWER END CAP	1	47	974908005	BASE (INC. #59)	1
12	990705009	SCREW (#8-22X5/8 in. PAN HD H)	1	48	726676002	SCREW ((#8-32 X 7/16 in. FLT POI	1
13	970771001	DIAL DETENT RATCHET	1	49	974998001	AUXILIARY HANDLE ASSEMBLY	1
14	616081003	SCREW (#8-18 X 1 in. PAN HD TC)	1	50	616968003	SCREW (#6-20 X 5/8 in. PAN HD T	2
15	616081014	SCREW (#8-18X11/16 in. PAN HD)	3	51	610120005	SCREW (#6-10 X 3/4 in. PAN HD)	8
16	974907001	LOGO PLATE	1	52	974239002	RING ASSEMBLY	1
17	974935001	LOWER END CAP LABEL	1	53	974516001	SCREW ((#4-40 X 3/4 in. PAND HD	2
18	975029001	BUMPER	4	54	974098001	LOWER BEARING PLATE	1
19	989573001	RETAINER CLIP	1	55	973669001	DEPTH LOCK LEVER	1
20	973679001	SHAFT LOCK LEVER	1	56	622347020	WASHER	1
21	612855001	SPRING	2	57	970712002	SCREW (#10-32 X 5/16 in. PAN HD	1
22	968303098	SWITCH	1	58	973689001	LOCK LEVER LABEL	1
23	612858002	SLIDE LOCK ASSEMBLY	1	59	623924007	NEEDLE ROLLER	1
24	14096807	SCREW (#10-16 X 1 in. FIL HD TF)	2	60	974997001	POWER HANDLE ASSEMBLY	1
25	968304026	BRUSH ASSEMBLY	2	61	973986100	LAMP BASE	1
26	611686003	BRUSH TUBE	2	62	968303046	SWITCH	1
27	974959002	TOP BEARING PLATE	1	63	616445001	SCREW (#8-18 X 5/8 in. FIL HD TC	2
28	622274001	BALL BEARING (NTN#608ZZ/1E)	1	64	644328001	BULB	1
29	968307125	FIELD	1	65	614661001	SCREW #10-32 X 1/2 in. FLT HD P	1
30	968306131	ARMATURE (INC. KEY #28)	1	66	973968001	LENS	1
31	607896001	RETAINING RING	2	67	998586001	SCREW (#8-10 X 1/4 in. PAN HD	4
32	974252003	1/2" COLLET ASS'Y (INC. 1 OF #3)	1	68	973668002	SUBBASE	1
33	974096001	SHOULDER SCREW	2	69	974518001	WRENCH (7/8 in.)	1
34	617932002	RETAINING RING	1		972000358	OWNERS MANUAL	
35	622347018	WASHER	1				
36	969313001	O RING	2				

SERVICE NOTES:

