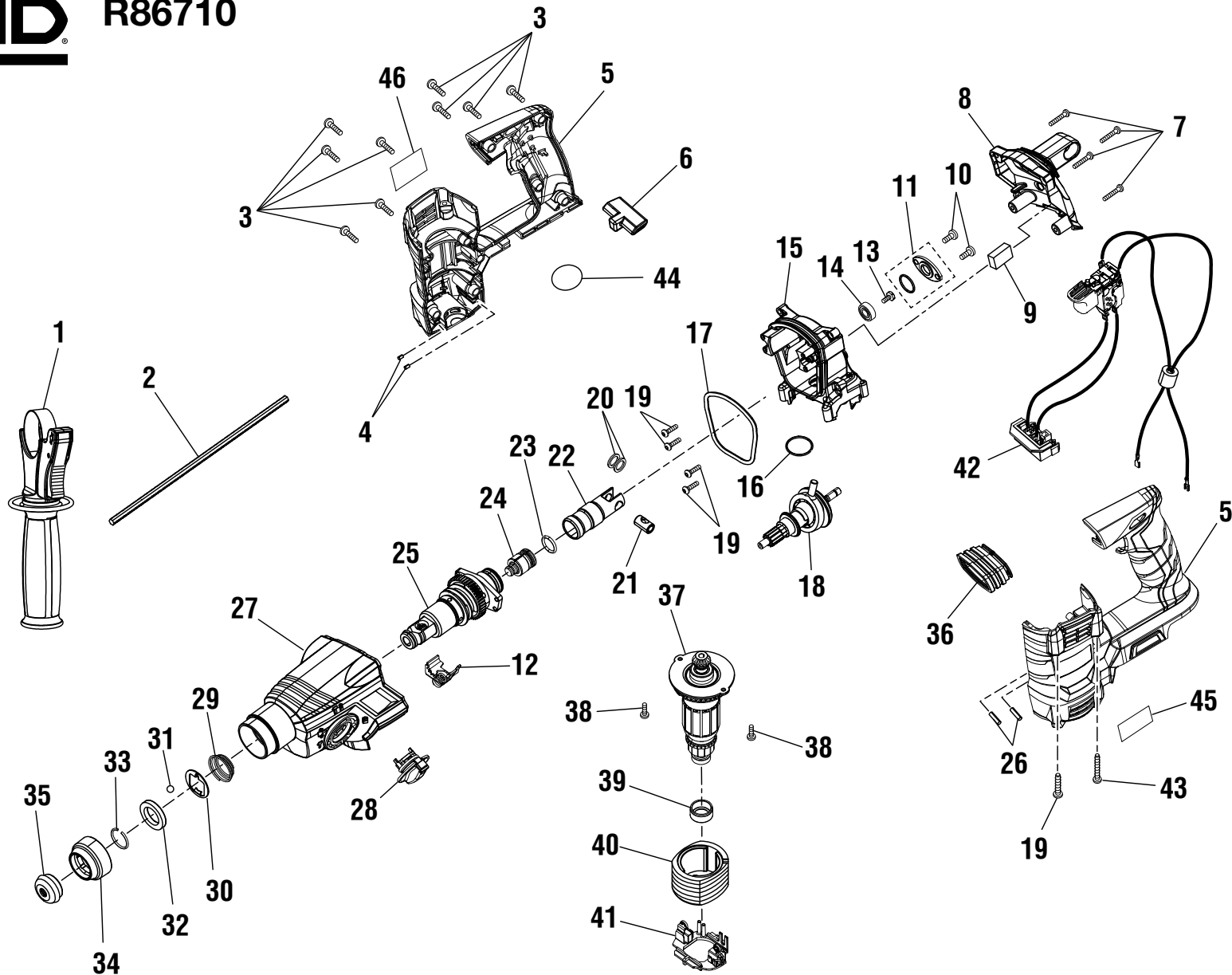


**RIDGID
R86710 18 V HAMMER DRILL
REPAIR SHEET**

**RIDGID
R86710 PERCEUSE À PERCUSSION 18 V
FEUILLE DE RÉPARATION**

**RIDGID
R86710 DE 18 V TALADRO DE PERCUSIÓN
LISTA DE PIEZAS DE REPUESTO**



▲ **WARNING:** The assembly shown represents an important part of the Double Insulated System. To avoid the possibility of alteration or damage to the System, service should be performed by your nearest authorized service center.

▲ **AVERTISSEMENT :** L'ensemble illustré représente une partie importante du système à isolation double. Afin d'éviter la possibilité de modification ou de dommage au système, la réparation ne doit être effectuée que par votre centre de réparation centre commercial autorisé.

▲ **ADVERTENCIA:** El conjunto que se ilustra representa una parte importante del Sistema de Aislamiento Doble. Para evitar la posibilidad de alteración o daño del sistema, la reparación debe ser efectuada en su centro de servicio autorizado.

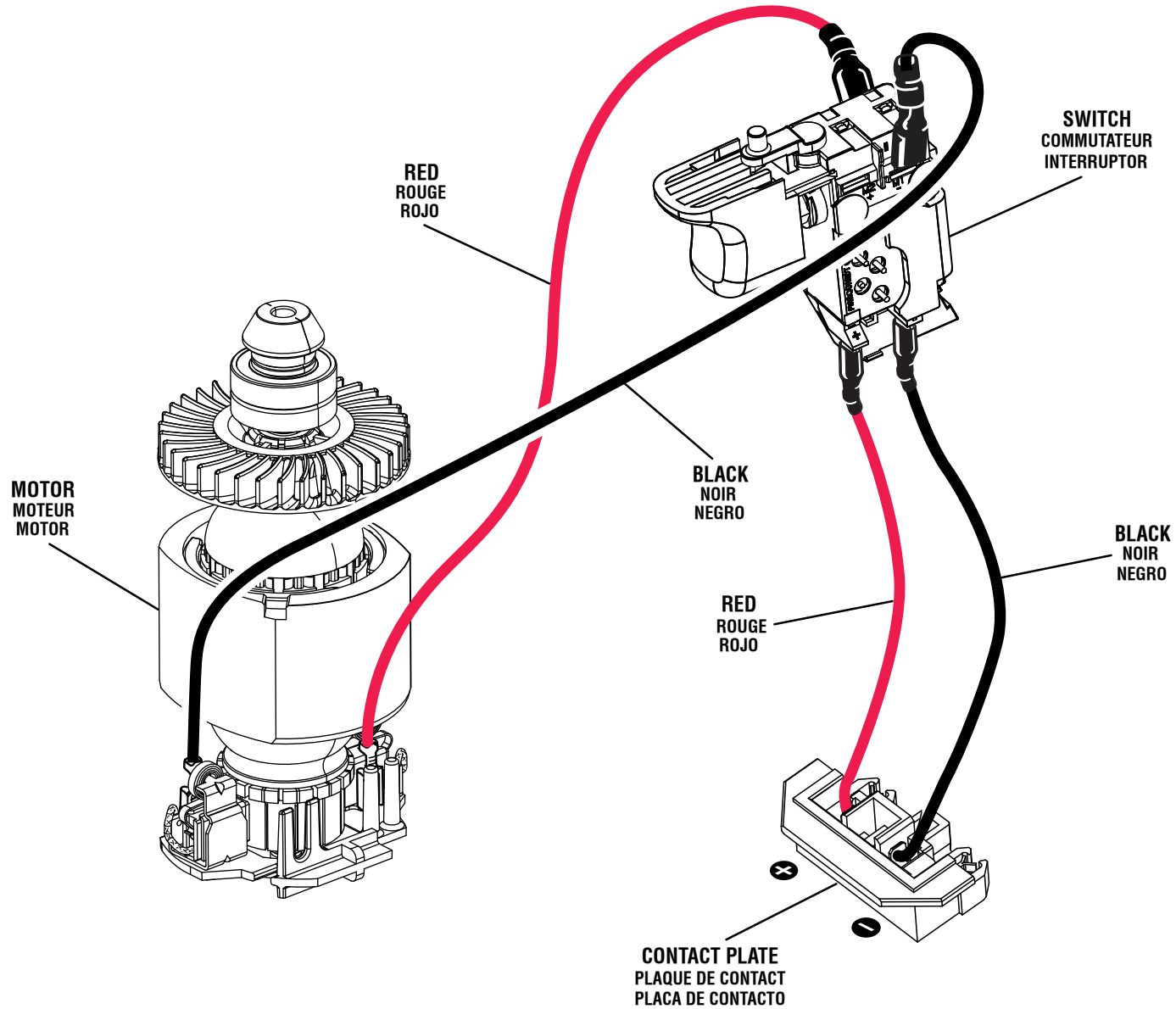
PARTS LIST

KEY	P/N	DESCRIPTION	QTY	KEY	P/N	DESCRIPTION	QTY
1	304389007	Auxiliary Handle Assembly	1	26	562608001	Pin.....	2
2	620448002	Depth Stop Rod.....	1	27	201841002	Gear Case Assembly (Inc. Key No. 12)	1
3	661283003	Screw (M4 x 18 mm).....	9	28	304036012	Speed Change Knob	1
4	562609001	Pin.....	2	29	672799001	Conical Spring	1
5	201845002	Housing Assembly (Inc. Key Nos. 44-46).....	1	30	632399001	Ball Support Plate.....	1
6	591181001	Forward/Reverse Selector.....	1	31	681154001	Ball (7 mm).....	1
7	661254003	Screw (M4 x 22 mm).....	4	32	633521001	Ball Retaining Washer.....	1
8	341182003	Gear Housing Cover	1	33	672631001	C-Ring	1
9	902505001	Block (Felt).....	1	34	522172001	Locking Sleeve	1
10	661286001	Screw (M5 x 12 mm).....	2	35	561993001	Dust Cap.....	1
11	201879001	Bearing Cover Assembly	1	36	562793001	Rubber Isolation Bellows.....	1
12	201877001	Clamp Plate Assembly (2nd Pinion)	1	37	201956003	Armature & Pinion Assembly	1
13	661504001	Screw (M4 x 10 mm).....	1	38	661233001	Screw (M4 x 12 mm).....	2
14	680999011	Ball Bearing	1	39	562610001	Bearing Cap.....	1
15	641710001	Crankcase.....	1	40	741587001	Field	1
16	562611001	O-Ring	1	41	290627001	Brush Holder Assembly	1
17	562612001	Gasket	1	42	201842001	Switch & Contact Plate Assembly	1
18	201759002	Clutch Assembly.....	1	43	661417005	Screw (M4 x 32 mm).....	2
19	661417004	Screw (M4 x 24 mm).....	6	44	941002283	Cap Label	1
20	632400001	Washer.....	2	45	940002282	Logo Label.....	1
21	692719001	Cylinder Bolt	1	46	941121745	Data Label	1
22	692717004	Cylinder	1				
23	561994001	O-Ring	1				
24	692698005	Striker	1				
25	201955002	Spindle Assembly.....	1				

Not Shown:
991000926 Operator's Manual
3-30-17
(Rev:01)

RIDGID R86710

FORWARD/REVERSE SWITCH
INTERRUPTEUR AVANT / ARRIÈRE
INTERRUPTOR DE AVANCE/RETROCESO



WIRING DIAGRAM SCHÉMA DE CÂBLAGE DIAGRAMA DE CABLEADO