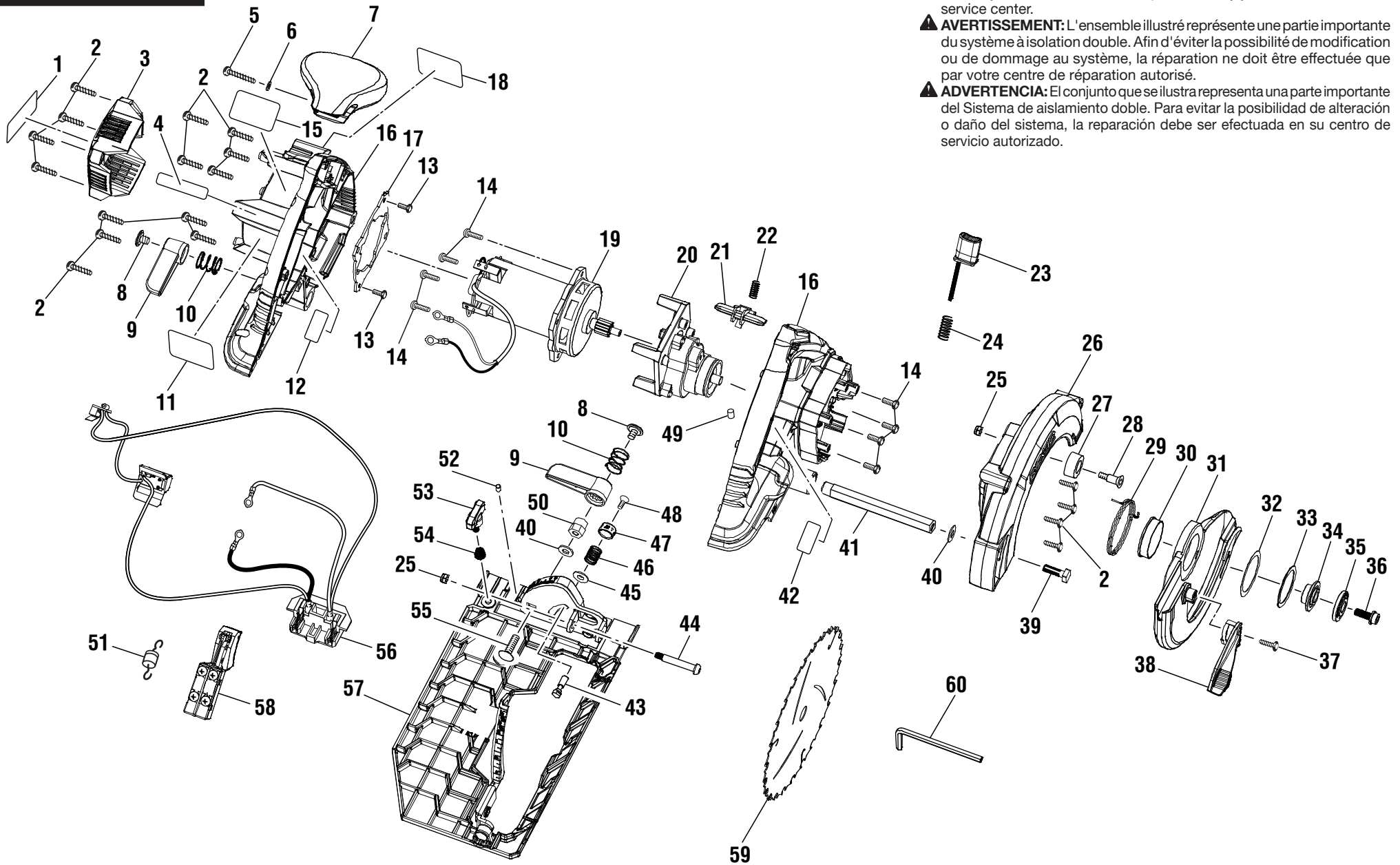


RIDGID® R865



⚠ WARNING: The assembly shown represents an important part of the Double Insulated System. To avoid the possibility of alteration or damage to the System, service should be performed by your nearest authorized service center.

⚠ AVERTISSEMENT: L'ensemble illustré représente une partie importante du système à isolation double. Afin d'éviter la possibilité de modification ou de dommage au système, la réparation ne doit être effectuée que par votre centre de réparation autorisé.

⚠ ADVERTENCIA: El conjunto que se ilustra representa una parte importante del Sistema de aislamiento doble. Para evitar la posibilidad de alteración o daño del sistema, la reparación debe ser efectuada en su centro de servicio autorizado.



R865

KEY	P/N	DESCRIPTION	QTY	KEY	P/N	DESCRIPTION	QTY
1	940034003	Logo Label.....	1	31	302694001	Lower Blade Guard Assembly	
2	660024044	Screw (M4 x 16 mm).....	18			(Inc. Key Nos. 37-38).....	1
3	517244001	End Cap.....	1	32	631771001	Washer (33.65 x 40 mm).....	1
4	940221023	Warning Label.....	1	33	691197001	Spiral Retaining Ring.....	1
5	660024011	Screw (M4 x 28 mm).....	1	34	6112003	Inner Blade Washer.....	1
6	6886501	Washer.....	1	35	610121003	Outer Blade Washer.....	1
7	517243001	Front Handle.....	1	36	660144008	Screw (M6 x 16 mm).....	1
8	660993001	Screw (1/4-20 x 7 mm).....	2	37	660024045	Screw (M4 x 13.5 mm).....	1
9	513965004	Lever.....	2	38	517238001	Lower Guard Lever.....	1
10	681035001	Spring.....	2	39	660865002	Screw (1/4-20).....	1
11	940221024	Warning Label.....	1	40	631771002	Washer (16 x 6.8 x 1t).....	2
12	940221026	Warning Label (French).....	1	41	672027001	Hex Bar.....	1
13	660202001	Screw (M3 x 10 mm, Pan Hd.).....	2	42	940221025	Warning Label (English).....	1
14	660212047	Screw (M4 x 14.5 mm).....	8	43	631687003	Bevel Pin.....	1
15	940976282	Data Label.....	1	44	660145009	Screw (M5 x 0.8 mm, Pan Hd.).....	1
16	200754001	Handle Assembly.....	1	45	513967001	Washer.....	1
17	902117001	Insulator.....	1	46	681036001	Spring.....	1
18	940221027	Warning Label (Spanish).....	1	47	513968001	Button.....	1
19	230049017	Motor Assembly.....	1	48	661197001	Screw (M3 x 8 mm, Pan Hd.).....	1
20	220054001	Gear Case Assembly.....	1	49	560219003	Rubber Seal.....	2
21	517242001	Safety Button.....	1	50	660841002	Hex Nut (1/4-20).....	1
22	672029001	Spring.....	1	51	840312001	Rectifier.....	1
23	302693001	Shaft Lock Assembly (Inc. Key No. 24).....	1	52	660066005	Set Screw (#8-32 x 1/4 in.).....	1
24	672028001	Spring.....	1	53	515057001	Knob Assembly.....	1
25	670974002	Lock Nut (M5).....	2	54	680001002	Spring.....	1
26	302695001	Upper Blade Guard Assembly (Inc. Key Nos. 25 and 27-28).....	1	55	660858004	Screw (1/4-20).....	1
27	560990003	Stopper.....	1	56	200781001	Circuit Board Assembly.....	1
28	660905005	Screw (M5 x 20 mm).....	1	57	302692001	Base Assembly.....	1
29	680672002	Spring.....	1	58	200780001	Switch Assembly w/Screws.....	1
30	514307001	Sleeve.....	1	59	680477027	Blade (6-1/2 in. 18T).....	1
				60	6800201	Hex Key (5 mm).....	1
					987000347	Operator's Manual	
					3-04-09		
					(REV:05)		