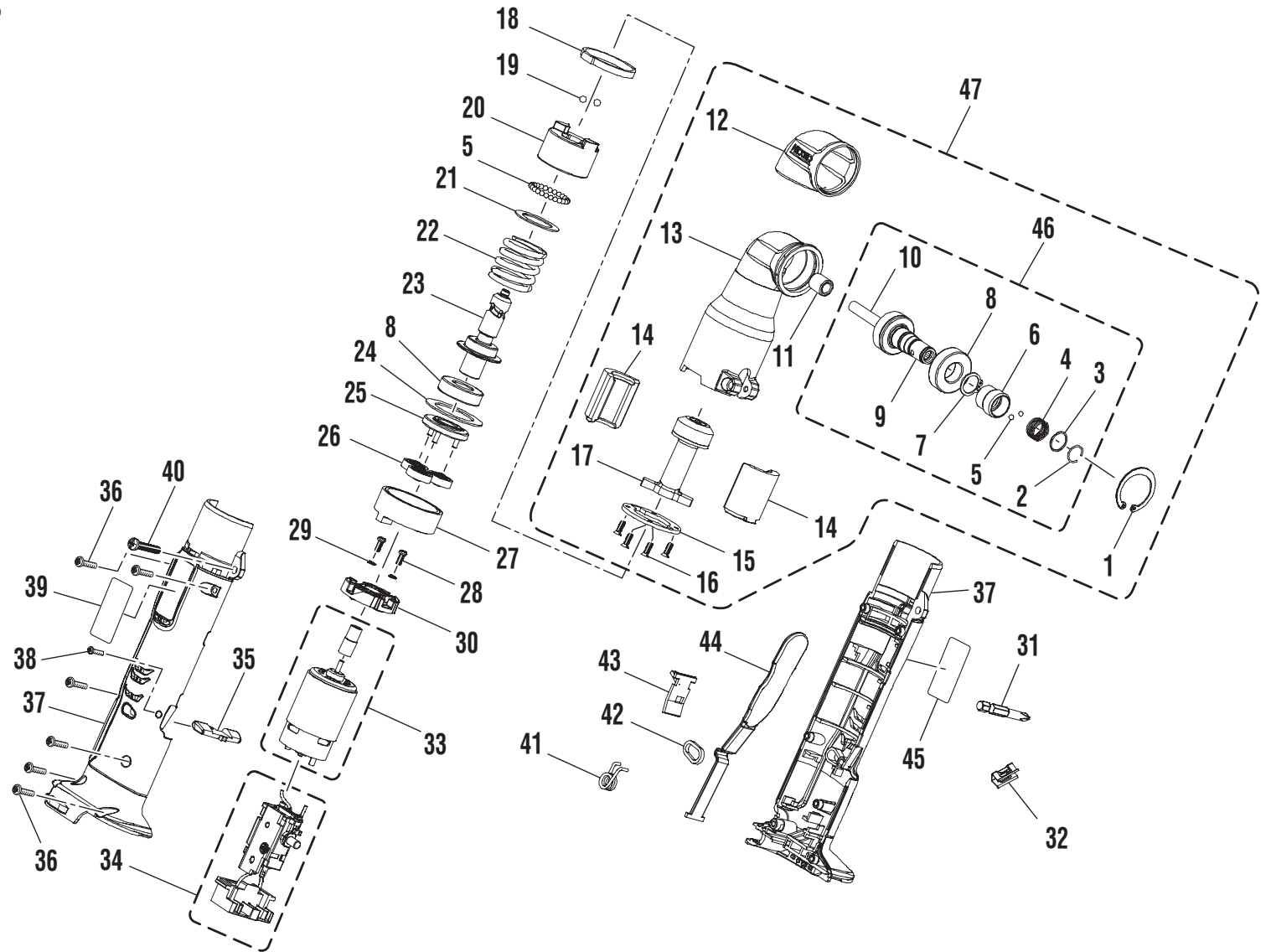


RIDGID
R82233 RIGHT ANGLE IMPACT DRIVER
REPAIR SHEET

RIDGID
R82233 CLÉ À CHOCS À ANGLE DROIT
FEUILLE DE RÉPARATION

RIDGID
R82233 DESTORNILLADOR DE
IMPACTO DE ÁNGULO RECTO
LISTAS DE PIEZAS DE REPUESTO



▲ **WARNING:** The assembly shown represents an important part of the Double Insulated System. To avoid the possibility of alteration or damage to the System, service should be performed by your nearest authorized service center.

▲ **AVERTISSEMENT :** L'ensemble illustré représente une partie importante du système à isolation double. Afin d'éviter la possibilité de modification ou de dommage au système, la réparation ne doit être effectuée que par votre centre de réparation centre commercial autorisé.

▲ **ADVERTENCIA:** El conjunto que se ilustra representa una parte importante del Sistema de Aislamiento Doble. Para evitar la posibilidad de alteración o daño del sistema, la reparación debe ser efectuada en su centro de servicio autorizado.

RIDGID® R82233

KEY	P/N	DESCRIPTION	QTY	KEY	P/N	DESCRIPTION	QTY	KEY	P/N	DESCRIPTION	QTY
1	671523001	RETAINING RING	1	21	671483001	WASHER	1	41	671525001	TORSION SPRING	1
2	690258001	RETAINING RING	1	22	671481001	SPRING	1	42	690164002	STRIP RING	1
3	690266001	WASHER	1	23	671488001	CAM	1	43	671513001	SWING BOARD	1
4	690261001	SPRING	1	24	690915017	WASHER	1	44	301225002	PADDLE SWITCH	1
5	690268001	BALL (3.5 mm)	25	25	671489001	CARRIAGE	1	45	940203050	LOGO LABEL	1
6	690260004	SLEEVE	1	26	610448001	PLANETARY GEAR	3	46	301185001	GEAR ASSEMBLY	1
7	671482001	RETAINING RING	1	27	610449001	RING GEAR	1	47	200373001	BEVEL GEAR ASSEMBLY	1
8	680071011	BALL BEARING (CW6002)	2	28	6621101	SCREW (M3 x 8 mm)	2	NOT SHOWN			
9	610445001	BEVEL GEAR	1	29	6702801	SPRING WASHER	2	48	987000036 or 983000528	OPERATOR'S MANUAL (R82233)	1
10	671484001	PIN	1	30	512763001	MOTOR MOUNT	1	49	987000205	OPERATOR'S MANUAL (R840091)	1
11	671485002	BUSHING	1	31	670800058	BIT (50 mm)	1	50	130252002	BATTERY PACK	1
12	570282001	GEAR CASE COVER	1	32	6320601	BIT CLIP	1	51	140276006	NICKEL-CADMIUM/LITHIUM-ION SINGLE PORT CHARGER	1
13	640790002	GEAR CASE	1	33	230121001	MOTOR ASSEMBLY	1	52	901613001	TOOL BAG (R82233)	1
14	671487001	SLEEVE BEARING	2	34	270018077	SWITCH ASSEMBLY	1	ALSO AVAILABLE			
15	690915016	WASHER	1	35	512762001	DIRECTION OF ROTATION SELECTOR ..	1	53	140276003	SINGLE PORT CHARGER	1
16	660228008	SCREW (M3 x 10 mm)	4	36	660024015	SCREW (M4 x 14 mm)	6	54	140276002	DUAL PORT CHARGER (R9212)	1
17	610446001	BEVEL PINION	1	37	200202260	HOUSING ASSEMBLY	1	55	901089001	TOOL BAG (R900)	1
18	671552001	SUPPORTING RING	1	38	660230013	SCREW (M3 x 16 mm)	1	56	900819004	TOOL BAG (R9212)	1
19	680015001	BALL (3/16 in.)	2	39	940237069	DATA LABEL	1	57	901613003	TOOL BAG (R842303)	1
20	671486003	IMPACTOR	1	40	660410002	SCREW (M5 x 22 mm)	1	5-13-09 (REV:09)			