

**RIDGID
R7133 MUD MIXER STAND
REPAIR SHEET**

**RIDGID
R7133 BASE DU MÉLANGEUR DE BOUE
FEUILLE DE RÉPARATION**

**RIDGID
R7133 STAND DE MEZCLADORA DE BARRO
LISTAS DE PIEZAS DE REPUESTO**

ONE WORLD TECHNOLOGIES, INC.

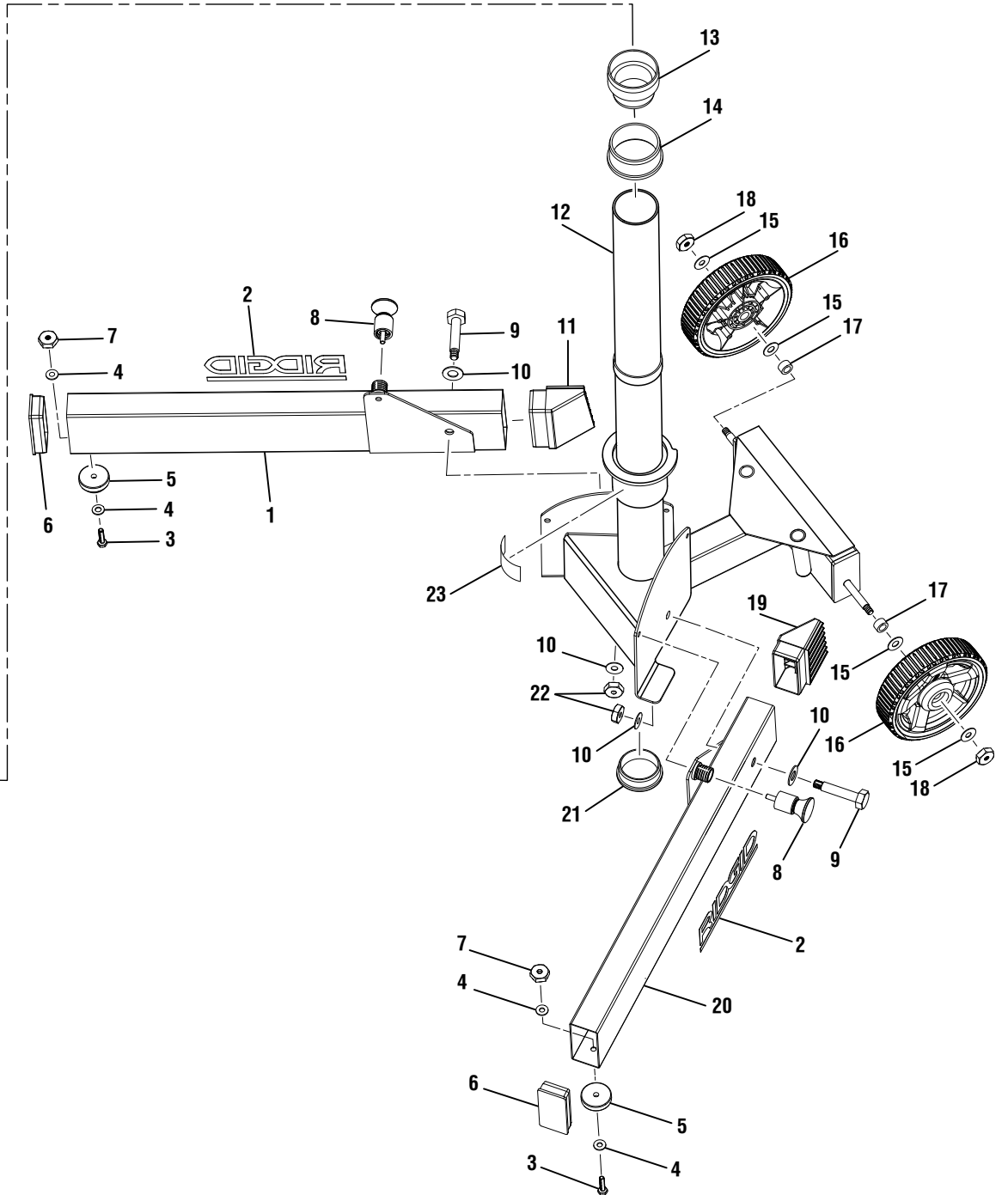
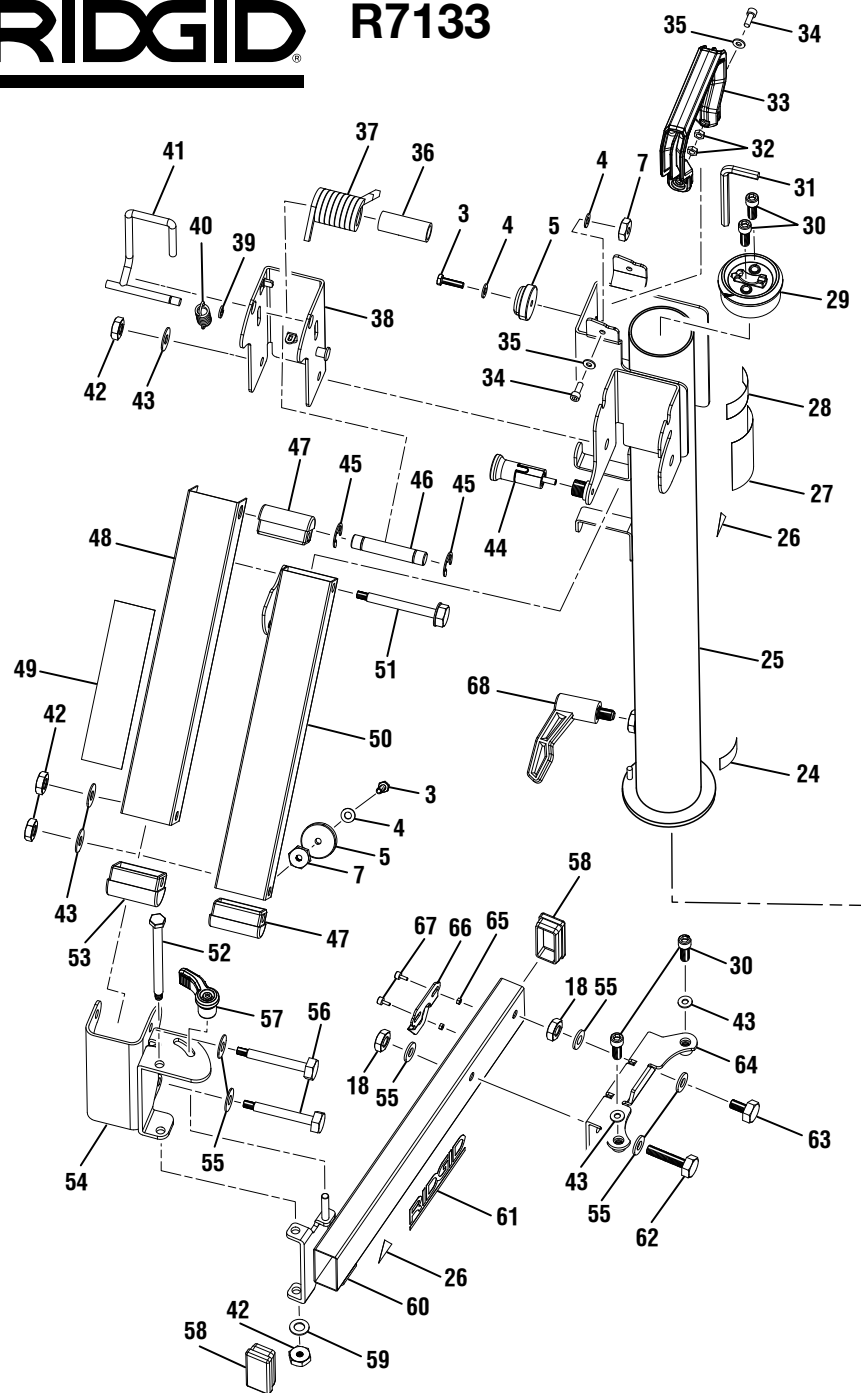
P.O. Box 1427

Anderson, SC 29622, USA

1-866-539-1710 ■ www.RIDGID.com

RIDGID is a registered trademark of RIDGID, Inc., used under license.

RIDGID R7133





R7133 Mud Mixer Stand

KEY	P/N	DESCRIPTION	QTY	KEY	P/N	DESCRIPTION	QTY	KEY	P/N	DESCRIPTION	QTY
1	019715001131	Left Leg Assembly (Incl. Key No. 2)	1	25	019715001133	Rotating Column Assembly (Incl. Key Nos. 24 and 26-28)	1	50	019715001134	Lower Extension Arm Assembly.....	1
2	941002322	Logo Label (Legs)	2	26	941488245	Pinch Point Label	2	51	019715001061	Bolt (M8 x 96.5 mm)	1
3	019715001020	Screw (M6 x 20 mm).....	4	27	941120336	Warning Icon Label.....	1	52	019715001055	Bolt (M8 x 136 mm)	1
4	019715001022	Washer (ID6 x OD16 x 1t)	6	28	941001521	Data Label	1	53	019715001040	Cap (Upper Arm).....	1
5	019715001021	Rubber Foot	4	29	019715001072	Hex Key Storage Cap.....	1	54	019715001136	Arm Bracket Assembly	1
6	019715001025	End Cap (Legs, Front).....	2	30	019715001060	Screw (M8 x 30 mm).....	4	55	019715001052	Washer (ID10.5 x OD20 x 1.2t)	7
7	019715001023	Lock Nut (M6)	4	31	019715001074	Hex Key	1	56	019715001041	Bolt (M8 x 84 mm)	2
8	019715001137	Leg Lock Pin Assembly	2	32	019715001077	Nut (M6)	2	57	019715001138	Lock Lever Assembly	1
9	019715001013	Bolt (M10 x 64 mm)	2	33	019715001076	Handle	1	58	019715001048	Swing Arm Cap	2
10	019715001014	Washer (ID13 x OD24 x 1.5t)	4	34	019715001075	Screw (M6 x 15 mm, Hex Hd.)	2	59	019715001045	Spring Washer (M8)	1
11	019715001127	End Cap (Left Leg, Rear)	1	35	019715001122	Washer (ID6 x OD15 x 1t)	2	60	019715001135	Swing Arm Assembly (Incl. Key Nos. 26 and 61)	1
12	019715001132	Base Assembly (Incl. Key No. 23)	1	36	019715001088	Spring Bushing	1	61	941002321	Logo Label (Crossbar)	1
13	019715001038	Upper End Cap (Support Tube).....	1	37	019715001066	Torsion Spring.....	1	62	019715001056	Bolt (M10 x 50 mm, Hex Hd.)	1
14	019715001033	Slide Ring (Support Tube).....	1	38	019715001071	Inner Bracket	1	63	019715001057	Bolt (M10 x 25 mm, Hex Hd.)	1
15	019715001002	Washer (ID12.5 x OD24 x 1.5t)	4	39	019715001067	C-Ring	1	64	019715001059	Mounting Bracket	1
16	019715001003	Wheel.....	2	40	019715001068	Tension Sping	1	65	019715001064	Nut (M5).....	2
17	019715001005	Spacer (ID13.5 x OD16.5 x 9t).....	2	41	019715001069	Arm Release	1	66	019715001062	Lock Plate (Swing Arm)	1
18	019715001001	Lock Nut (M10)	4	42	019715001042	Lock Nut (M8)	4	67	019715001063	Screw (M5 x 16 mm, Hex Hd.)	2
19	019715001012	End Cap (Right Leg, Rear).....	1	43	019715001043	Washer (ID8.5 x OD15 x 1.2t)	5	68	019715001140	Main Lock Lever Assembly	1
20	019715001130	Right Leg Assembly (Incl. Key No. 2)	1	44	019715001139	Arm Lock Pin Assembly	1	Not Shown:			
21	019715001036	Bottom End Cap (Support Tube)	1	45	019715001089	C-Ring	2	995000194	Operator's Manual		
22	019715001031	Lock Nut (M10)	2	46	019715001087	Spring Pin	1	11-9-17			
23	941002325	Arrow Label (Lower).....	1	47	019715001039	Cap (Lower Arm).....	2	(Rev:01)			
24	941002324	Arrow Label (Upper).....	1	48	019715001141	Upper Tension Arm Assembly (Incl Key No. 49)	1				
				49	941015014	Quick Start Label.....	1				