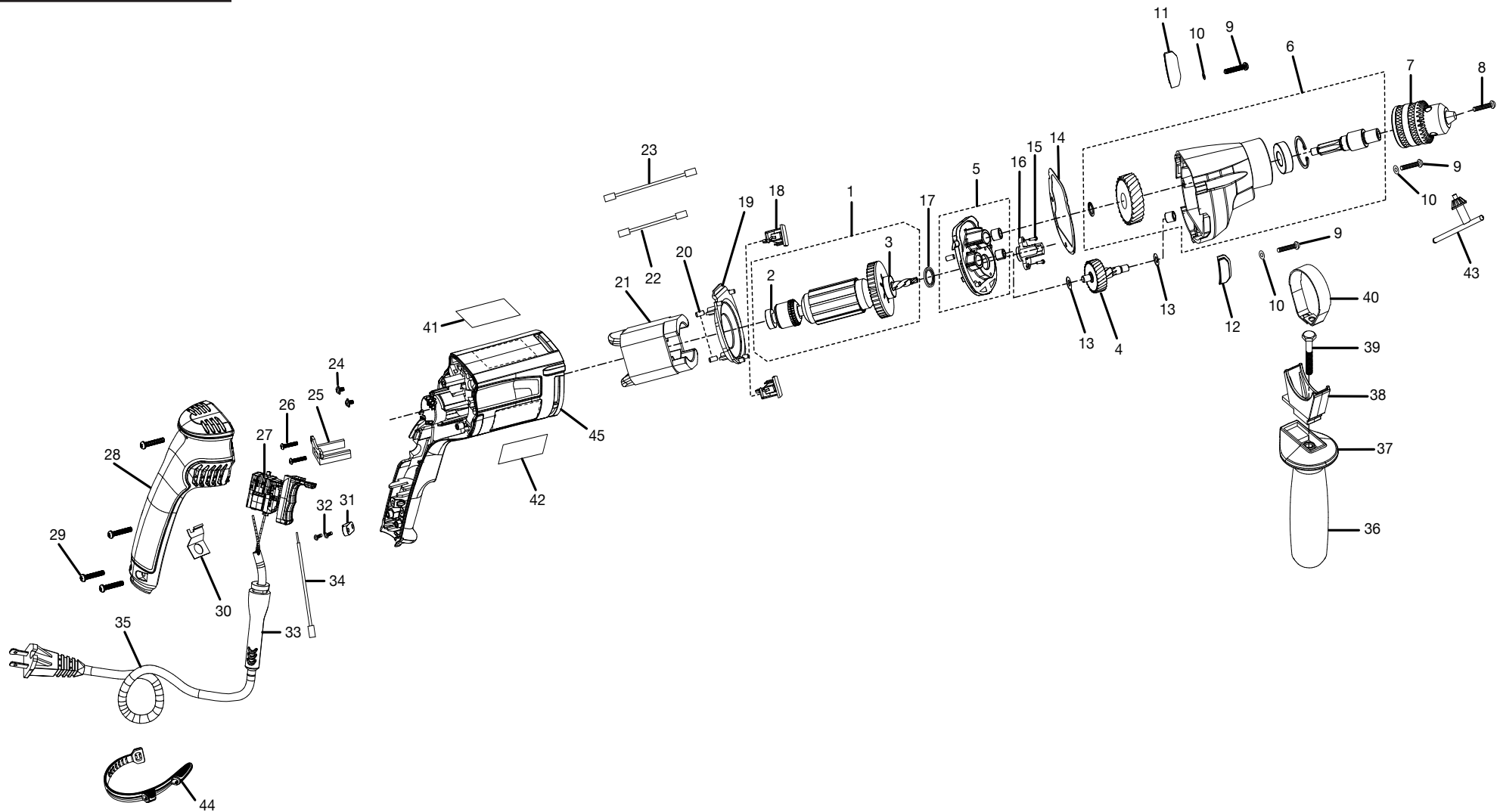


# RIDGID

## R7111



▲ **WARNING:** The assembly shown represents an important part of the Double Insulated System. To avoid the possibility of alteration or damage to the System, service should be performed by your nearest authorized service center.

▲ **AVERTISSEMENT :** L'ensemble illustré représente une partie importante du système à isolation double. Afin d'éviter la possibilité de modification ou de dommage au système, la réparation ne doit être effectuée que par votre centre de réparation centre commercial autorisé.

▲ **ADVERTENCIA:** El conjunto que se ilustra representa una parte importante del Sistema de Aislamiento Doble. Para evitar la posibilidad de alteración o daño del sistema, la reparación debe ser efectuada en su centro de servicio autorizado.

# RIDGID® R7111

KEY	P/N	DESCRIPTION	QTY	KEY	P/N	DESCRIPTION	QTY	KEY	P/N	DESCRIPTION	QTY
1	300998009	* ARMATURE ASSEMBLY (V MOTOR) (INC. KEY NOS. 2 AND 3) .....	1	16	672026001	ARMATURE SHAFT SUPPORT .....	1	33	560801001	BEND RELIEF .....	1
	200216038	** ARMATURE ASSEMBLY (HH MOTOR) (INC. KEY NOS. 2 AND 3) .....	1	17	570593001	RUBBER SEAL RING .....	1	34	290102010	SWITCH LEAD WIRE ASSEMBLY .....	1
2	6972701	BALL BEARING (626Z) .....	1	18	290069080	BRUSH ASSEMBLY .....	2	35	730401022	POWER CORD .....	1
3	671004001	BALL BEARING (CW#608Z) .....	1	19	513529001	FAN CASE .....	1	36	300067509	HANDLE ASSEMBLY .....	1
4	300675003	GEAR SHAFT ASSEMBLY .....	1	20	560712002	RUBBER BUMPER .....	2	37	511458001	HANDLE BRACKET .....	1
5	301318001	GEAR CASE COVER ASSEMBLY .....	1	21	740785001	* FIELD (V MOTOR) .....	1	38	641005002	SPRING PLATE CARRIER .....	1
6	300676007	GEAR CASE AND OUTPUT SHAFT ASSEMBLY .....	1		741205001	** FIELD (HH MOTOR) .....	1	39	660142009	ADJUSTABLE BOLT (M6 x 1 x 40 mm) ...	1
7	690090013	CHUCK .....	1	22	290102009	BRUSH LEAD WIRE ASS'Y .....	1	40	631450002	SPRING PLATE .....	1
8	660134004	SCREW (M6 x 1 x 15 mm) .....	1	23	290102008	BRUSH LEAD WIRE ASS'Y .....	1	41	940051028	LOGO LABEL .....	1
9	660024011	SCREW (M4 x 28 mm) .....	3	24	660290004	SCREW (M3 x 5 mm) .....	2	42	940301050	DATA LABEL .....	1
10	6703001	SPRING WASHER .....	3	25	514037001	PRESSURE BRUSH .....	1	43	690176003	CHUCK KEY .....	1
11	510533001	ANTI-SKID PAD (LEFT) .....	1	26	660203027	SCREW (M3 x 8 mm) .....	2	44	560989001	CHUCK KEY STRAP .....	1
12	510532001	ANTI-SKID PAD (RIGHT) .....	1	27	760406002	SWITCH .....	1	45	200058016	MOTOR HOUSING (INC. KEY NOS. 41 AND 42) .....	1
13	631484001	WASHER .....	2	28	510531002	HANDLE COVER .....	1	<b>NOT SHOWN</b>			
14	900239035	PAPER GASKET .....	1	29	660024051	SCREW (M4 x 18 mm) .....	4	902629001	TOOL BAG .....	1	
15	660320008	SCREW (M3.5 x 12 mm) .....	2	30	901336001	INSULATOR .....	1	983000957	OPERATOR'S MANUAL (960001242) .....	1	
				31	5950101	CORD CLAMP .....	1	7-10-12 (REV:09)			
				32	6627201	SCREW (M4 x 14 mm) .....	2				

\* The motor without imprint of part number is V motor. V motor must be replaced by item \* 1 and item \* 21.

\*\* The motor imprinted part number 290169001 is HH motor. HH motor must be replaced by item \*\* 1 and item \*\*21.