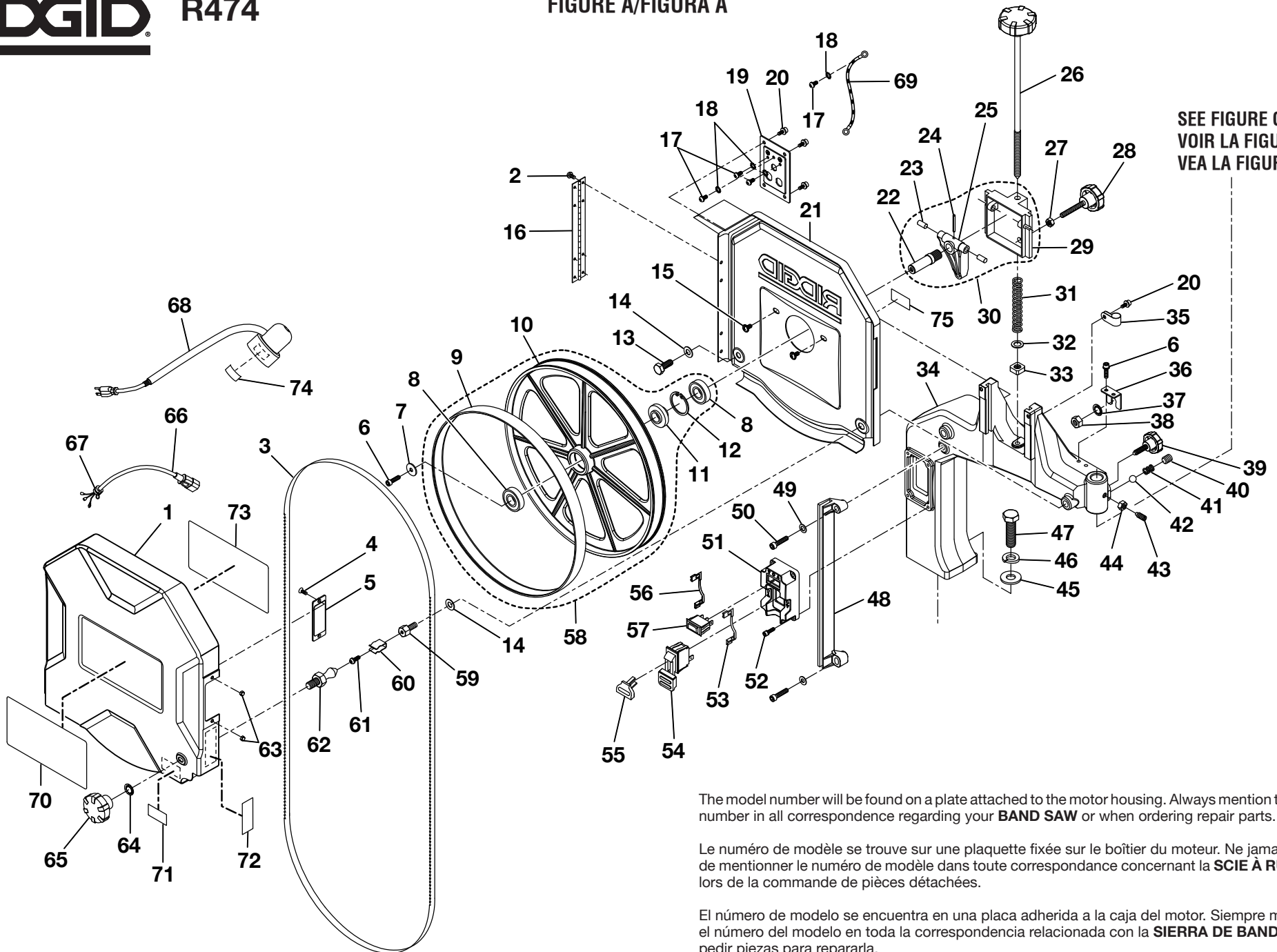


FIGURE A/FIGURA A



The model number will be found on a plate attached to the motor housing. Always mention the model number in all correspondence regarding your **BAND SAW** or when ordering repair parts.

Le numéro de modèle se trouve sur une plaquette fixée sur le boîtier du moteur. Ne jamais oublier de mentionner le numéro de modèle dans toute correspondance concernant la **SCIE À RUBAN** ou lors de la commande de pièces détachées.

El número de modelo se encuentra en una placa adherida a la caja del motor. Siempre mencione el número del modelo en toda la correspondencia relacionada con la **SIERRA DE BANDA** o al pedir piezas para repararla.



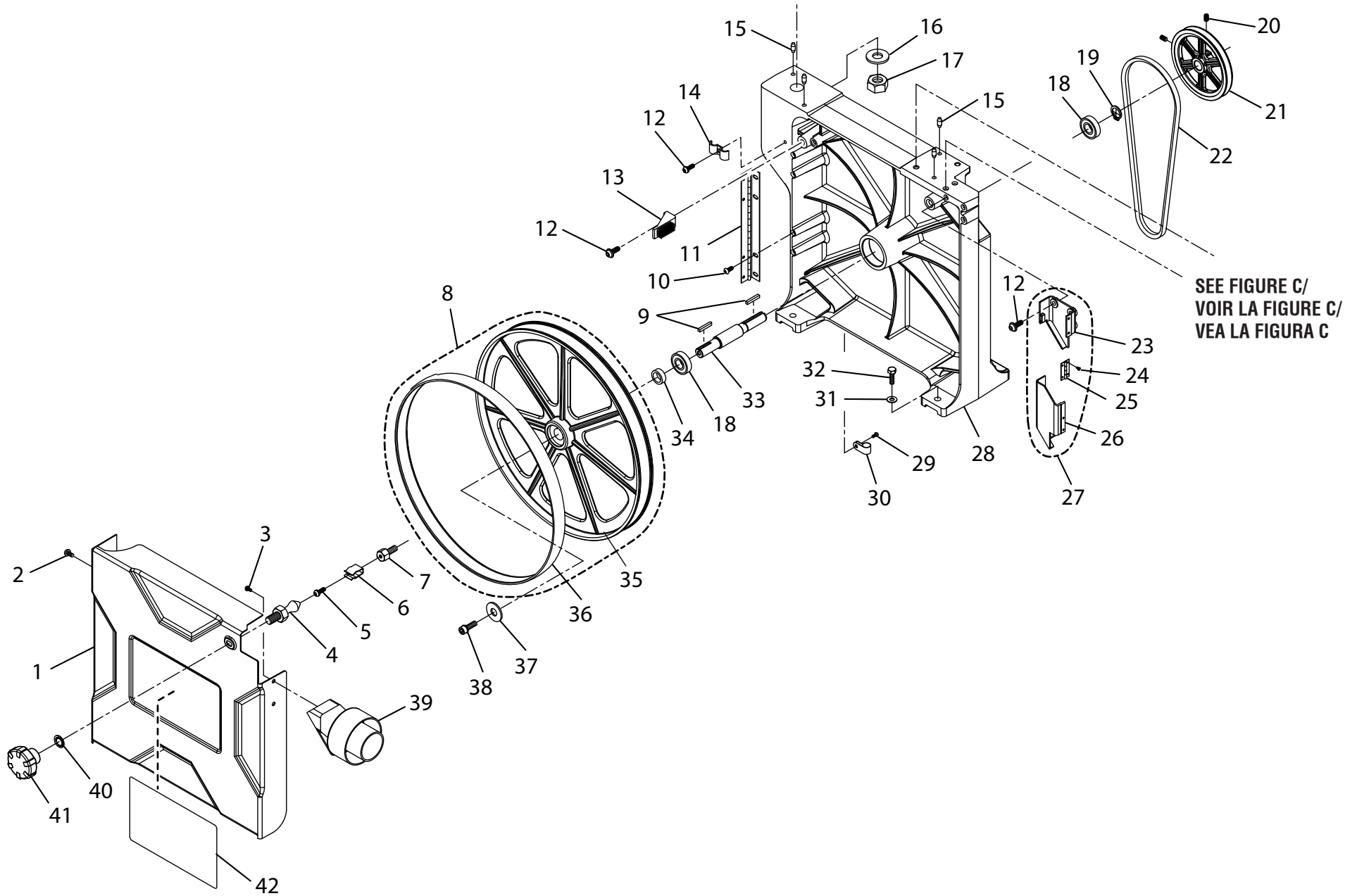
R474

PARTS LIST FOR FIGURE A

Key No.	Part Number	Description	Qty.	Key No.	Part Number	Description	Qty.
1	089030005082	UPPER WHEEL COVER, FRONT	1	38	089030005114	* HEX NUT (M12)	1
2	089030005074	* SCREW w/WASHER (M4 x 8 mm)	8	39	089030005002	LOCK KNOB	1
3	089030005071	BLADE (93-1/2 in. x 3/8 in. x 0.025 in. x 6TPI)	1	40	089030005018	* SET SCREW (M10 x 8 mm)	1
4	089030005105	* SCREW (M4 x 10 mm, FT HD.)	2	41	089030005019	COMPRESSION SPRING	1
5	089030005075	TRACKING VIEW WINDOW	1	42	089030005020	STEEL BALL (8 mm)	1
6	089030005108	* SCREW w/WASHER (M6 x 12 mm)	3	43	089030005168	* SET SCREW (M10 x 28 mm)	1
7	089030005049	WASHER (6.4 x 23 x 2t)	1	44	089030005167	* HEX NUT (M10)	1
8	089030005066	BALL BEARING (6202ZZ)	2	45	089030005055	* WASHER (M19 x M36 x 3t)	1
9	089030005070	TIRE	1	46	089030005054	* SPRING WASHER (M19)	1
10	089030005068	UPPER WHEEL	1	47	089030005053	* SCREW (M18 x 70 mm)	1
11	089030005132	SPACER	1	48	089030005085	REAR BLADE GUARD	1
12	089030005067	RETAINING RING, INTERNAL	1	49	089030005084	WASHER	2
13	089030005130	* SCREW (M10 x 16 mm)	1	50	089030005083	* SCREW (M8 x 30 mm)	2
14	089030005131	WASHER	2	51	089030005102	SWITCH BOX	1
15	089030005087	LOCKING SCREW (M6 x 10 mm, PAN HD)	2	52	089030005101	* SCREW w/WASHER (M5 x 20 mm)	4
16	089030005086	UPPER HINGE	1	53	089030005124	BLACK LEAD w/TERMINAL (14 AWG)	1
17	089030005127	* SCREW w/WASHER (M5 x 8 mm)	4	54	089030005100	SWITCH w/KEY	1
18	089030005126	EXTERNAL TOOTH WASHER (M5)	4	55	089030005099	SWITCH KEY	1
19	089030005104	SWITCH BOX MOUNTING PLATE	1	56	089030005125	WHITE LEAD w/TERMINAL	1
20	089030005040	* SCREW w/WASHER (M5 x 10 mm)	6	57	089030005103	WORKLIGHT SWITCH (14 AWG)	1
21	089030005088	UPPER WHEEL COVER, REAR	1	58	089030005705	UPPER WHEEL ASSEMBLY (INC. KEY NOS. 8-12)	1
22	089030005091	UPPER WHEEL SHAFT	1	59	089030005111	* BOLT (M10 x 17 mm HEX HD.)	1
23	089030005093	ROTATION PIN	2	60	089030005073	DOOR CATCH	1
24	089030005090	ROLL PIN (3.0 x 22 mm)	1	61	089030005123	* SCREW w/WASHER (M5 x 10 mm BUTTON HD.)	1
25	089030005089	WHEEL SUPPORT, UPPER	1	62	089030005110	STUD LATCH	1
26	089030005095	BLADE TENSION KNOB	1	63	089030005106	* ACORN NUT (M4)	2
27	089030005030	* HEX NUT (M8)	1	64	089030005122	INTERNAL TOOTH WASHER	1
28	089030005094	TRACKING KNOB	1	65	089030005080	KNOB	1
29	089030005092	UPPER WHEEL ADJUSTER	1	66	089030005116	WORKLIGHT CONNECTOR w/PLUG (18 AWG)	1
30	089030005700	UPPER WHEEL ADJUSTER ASSEMBLY (INC. KEY NOS. 22-25 and 29)	1	67	089030005120	CORD BUSHING (SR-5R1)	1
31	089030005096	COMPRESSION SPRING	1	68	089030005115	WORKLIGHT	1
32	089030005097	INDICATOR WASHER	1	69	089030005205	GROUND LEAD	1
33	089030005098	SQUARE NUT	1	70	089030005903	LOGO LABEL	1
34	089030005001	UPPER FRAME	1	71	089030005910	NO HANDS LABEL (LARGE)	1
35	089030005107	CABLE CLAMP	2	72	089030005909	SAFETY LABEL	1
36	089030005112	WORKLIGHT MOUNTING BRACKET	1	73	089030005908	BLADE TENSION LABEL	1
37	089030005113	INTERNAL TOOTH WASHER	1	74	089030005904	WORKLIGHT LABEL	1
				75	089030005902	DATA LABEL	1

* Standard Hardware Item – May Be Purchased Locally

FIGURE B/FIGURA B



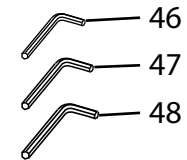
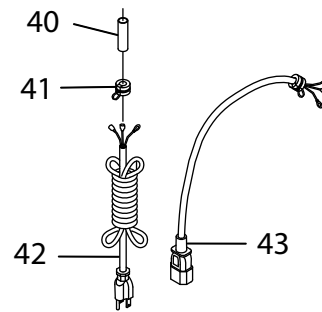
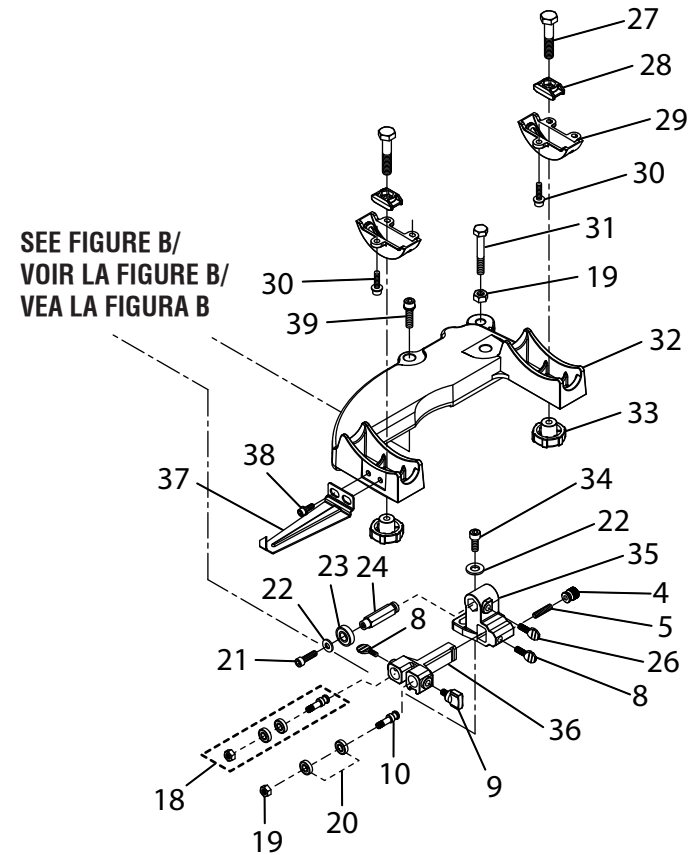
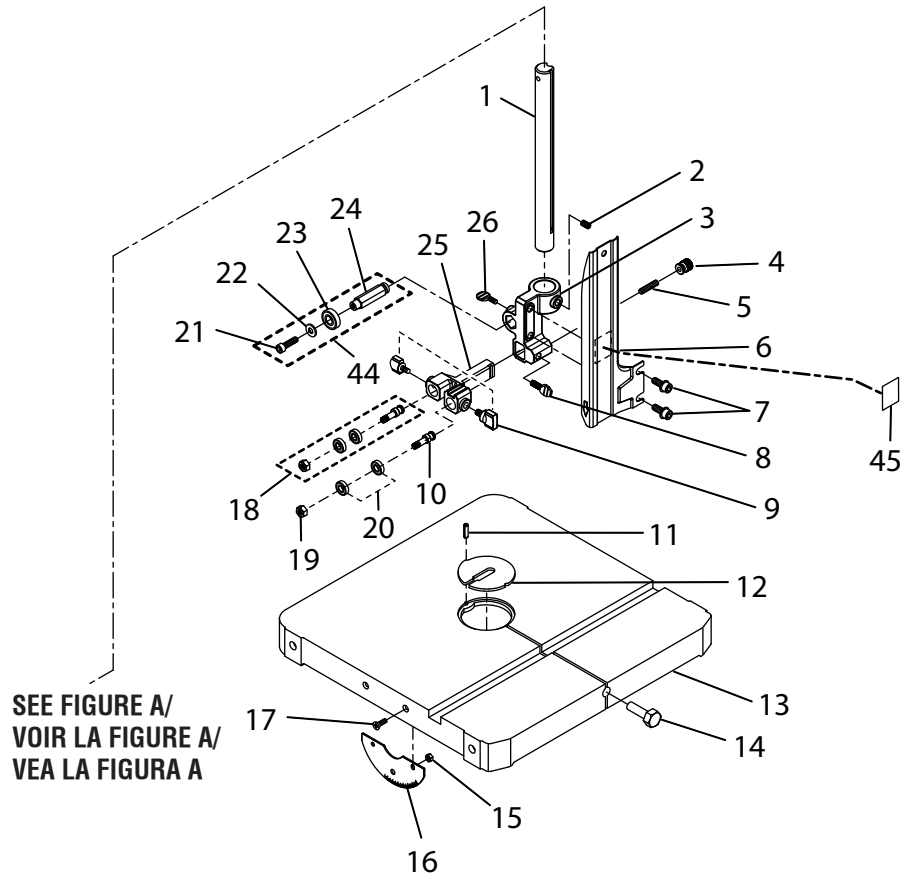


R474

PARTS LIST FOR FIGURE B

Key No.	Part Number	Description	Qty.	Key No.	Part Number	Description	Qty.
1	089030005079	LOWER WHEEL COVER, FRONT	1	21	089030005048	PULLEY	1
2	089030005074	* SCREW w/WASHER (M4 x 8 mm)	4	22	089030005047	V-BELT	1
3	089030005081	* SCREW (M4.8 x 16 mm, PAN HD.)	2	23	089030005033	REAR DUST CHUTE GUARD	1
4	089030005110	STUD LATCH	1	24	089030005034	* SCREW (M3 x 6 mm, PAN HD.)	4
5	089030005123	* SCREW w/WASHER (BUTTON HD.) (M5 x 10 mm)	1	25	089030005032	HINGE	1
6	089030005073	DOOR CATCH	1	26	089030005036	FRONT DUST CHUTE GUARD	1
7	089030005072	* BOLT (M10 x 17 mm HEX HD.)	1	27	089030005701	DUST CHUTE ASSEMBLY (INC. NOS. 23-26)	1
8	089030005704	LOWER WHEEL ASSEMBLY (INC. KEY NOS. 35-36)	1	28	089030005064	BASE	1
9	089030005063	* HEX KEY (6 x 6 x 28 L)	2	29	089030005040	* SCREW w/WASHER (M5 x 10 mm)	1
10	089030005058	SCREW (BUTTON HD.)	4	30	089030005109	CORD CLAMP	1
11	089030005057	HINGE LOWER	1	31	089030005084	WASHER	4
12	089030005042	* SCREW w/WASHER (M6 x 12 mm, BUTTON HD)	5	32	089030005069	* SCREW (M8 x 30 mm)	4
13	089030005059	BRUSH	1	33	089030005062	LOWER WHEEL SHAFT	1
14	089030005076	CORD CLAMP	1	34	089030005077	RING	1
15	089030005052	PIN	4	35	089030005065	LOWER WHEEL	1
16	089030005055	* WASHER (M19 x M36 x 3t)	1	36	089030005070	TIRE	1
17	089030005056	* HEX NUT (M18)	1	37	089030005061	* WASHER M8.4 x M24 x 3t)	1
18	089030005051	BALL BEARING (6204ZZ)	2	38	089030005060	* SCREW w/WASHER (M5 x 16 mm)	1
19	089030005050	EXTERNAL RETAINING RING	1	39	089030005078	DUST CHUTE	1
20	089030005017	* SET SCREW (M6 x 8 mm)	2	40	089030005122	INTERNAL TOOTH WASHER	1
				41	089030005080	KNOB	1
				42	089030005905	WARNING LABEL	1

* Standard Hardware Item – May Be Purchased Locally





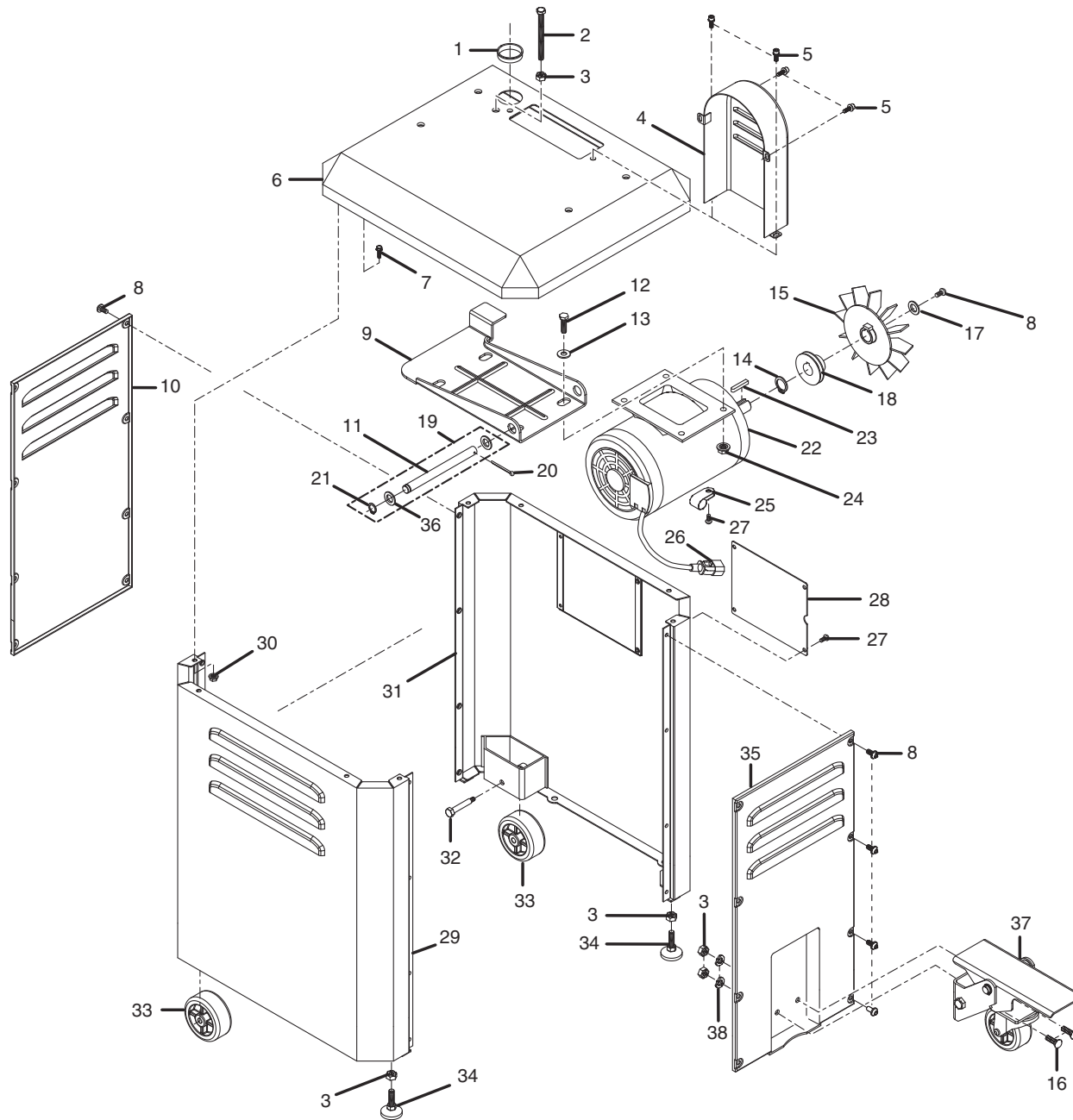
R474

PARTS LIST FOR FIGURE C

Key No.	Part Number	Description	Qty.	Key No.	Part Number	Description	Qty.
1	089030005007	GUIDE POST	1	25	089030005016	UPPER SLIDE BRACKET	1
2	089030005169	* SET SCREW (M6 x 10 mm).....	1	26	089030005011	* THUMB SCREW, METAL (M6 x 10 mm).....	2
3	089030005008	POST SUPPORT BRACKET	1	27	089030005025	* SCREW (M10 x 50 mm HEX HD.).....	2
4	089030005010	MICRO ADJUST NUT	4	28	089030005026	TRUNNION BRACKET CLAMP.....	2
5	089030005009	* SET SCREW (M8 x 35 mm).....	4	29	089030005027	TRUNNION BRACKET	2
6	089030005012	UPPER BLADE GUARD.....	1	30	089030005028	* SCREW w/WASHER (M6 x 16 mm).....	6
7	089030005014	* SCREW w/WASHER (M6 x 10 mm).....	2	31	089030005029	* SCREW (M8 x 75 mm)	1
8	089030005129	* THUMB SCREW, METAL (M6 x 16 mm).....	3	32	089030005041	TRUNNION (TABLE BRACKET).....	1
9	089030005006	THUMB SCREW, PLASTIC.....	3	33	089030005038	TABLE LOCK KNOB	2
10	089030005015	ECCENTRIC BEARING SHAFT.....	4	34	089030005121	* SCREW (M6 x 20 mm)	2
11	089030005021	SPRING PIN (4.0 x 10 mm).....	1	35	089030005035	LOWER SUPPORT BRACKET	1
12	089030005022	THROAT PLATE.....	1	36	089030005037	LOWER SLIDE BRACKET	1
13	089030005023	SAW TABLE.....	1	37	089030005039	BEVEL INDICATOR.....	1
14	089030005024	TABLE PIN	1	38	089030005040	* SCREW w/WASHER (M5 x 10 mm)	2
15	089030005046	* HEX NUT (M5).....	2	39	089030005043	* SCREW w/WASHER (M8 x 30 mm).....	2
16	089030005045	BEVEL SCALE.....	1	40	089030005128	SLEEVE (D12 x 30 mm x 0.8t).....	2
17	089030005044	* SCREW (M5 x 16 mm, FLAT HD.).....	2	41	089030005119	CORD BUSHING (SR-6R1).....	2
18	089030005707	ECCENTRIC BEARING SHAFT ASSEMBLY (INC. NOS. 10 & 19-20).....	4	42	089030005118	POWER SUPPLY CORD (14 AWG).....	1
19	089030005030	* HEX NUT (M8).....	5	43	089030005117	MOTOR SUPPLY CORD (14 AWG).....	1
20	089030005003	BALL BEARING (608ZZ)	8	44	089030005706	SLEEVE SPACING ASSEMBLY (INC. KEY NOS. 21-24).....	2
21	089030005031	* SCREW (M6 x 12 mm)	2	45	089030005911	NO HANDS LABEL (SMALL).....	1
22	089030005013	* WASHER (6.4 x 14 x 1.5t).....	4	46	089030005201	3 mm HEX KEY	1
23	089030005004	BALL BEARING (6200ZZ)	2	47	089030005202	4 mm HEX KEY	1
24	089030005005	SLEEVE SPACING	2	48	089030005203	5 mm HEX KEY	1

* Standard Hardware Item – May Be Purchased Locally

FIGURE D/FIGURA D





R474

PARTS LIST FOR FIGURE D

Key No.	Part Number	Description	Qty.
1	089030005148	RING BUSHING	1
2	089030005165	* SCREW (M8 x 75 mm)	1
3	089030005030	* HEX NUT (M8).....	5
4	089030005136	PULLEY COVER.....	1
5	089030005014	* SCREW w/WASHER (M6 x 10 mm)	4
6	089030005137	MOBILE STAND TOP.....	1
7	089030005153	SCREW (M6 x 10 mm FLANGE HD.)	8
8	089030005151	* SCREW (M6 x 16 mm, BUTTON HD.).....	17
9	089030005135	MOTOR MOUNTING PLATE.....	1
10	089030005141	REAR PANEL	1
11	089030005144	MOTOR MOUNTING ROD	1
12	089030005150	* SCREW (M8 x 20 mm)	4
13	089030005084	* WASHER (M8.4 x M15.5 x 1.6t).....	4
14	089030005163	EXTERNAL RETAINING RING.....	1
15	089030005161	FAN	1
16	089030005159	* BOLT (M8 x 16 mm, RD. HD. SQUARE NECK).....	2
17	089030005049	* WASHER (6.4 x 23 x 2t)	1
18	089030005156	MOTOR PULLEY.....	1
19	089030005709	MOTOR MOUNTING ROD ASSEMBLY (INC. KEY NO. 11, 21 AND 36)	1
20	089030005164	COTTER PIN	1
21	089030005158	EXTERNAL RETAINING RING.....	1

Key No.	Part Number	Description	Qty.
22	089030005133	MOTOR ASSEMBLY	1
23	089030005147	KEY	1
24	089030005157	* FLANGE NUT (M8).....	4
25	089030005109	CORD CLAMP	1
26	089030005134	MOTOR SUPPLY CORD.....	1
27	089030005152	* SCREW (M5 x 8 mm, BUTTON HD.).....	5
28	089030005146	ACCESS DOOR	1
29	089030005138	LEFT SIDE PANEL	1
30	089030005154	* FLANGE NUT (M6).....	8
31	089030005139	RIGHT SIDE PANEL	1
32	089030005145	REAR WHEEL SHAFT	2
33	089030005142	REAR WHEEL	2
34	089030005143	PAD	2
35	089030005140	FRONT PANEL.....	1
36	089030005204	* WASHER (M12.4 mm x M24 x 1.5t).....	2
37	089030005703	WHEEL ASSEMBLY.....	1
38	089030005160	SPRING WASHER.....	2

NOT SHOWN ITEMS:

39	089030005906	MOTOR CORD TAG	1
40	089030005907	MOTOR LABEL	1
	987000216	OPERATOR'S MANUAL (089030005901)	
	5-29-08		
	(REV:02)		