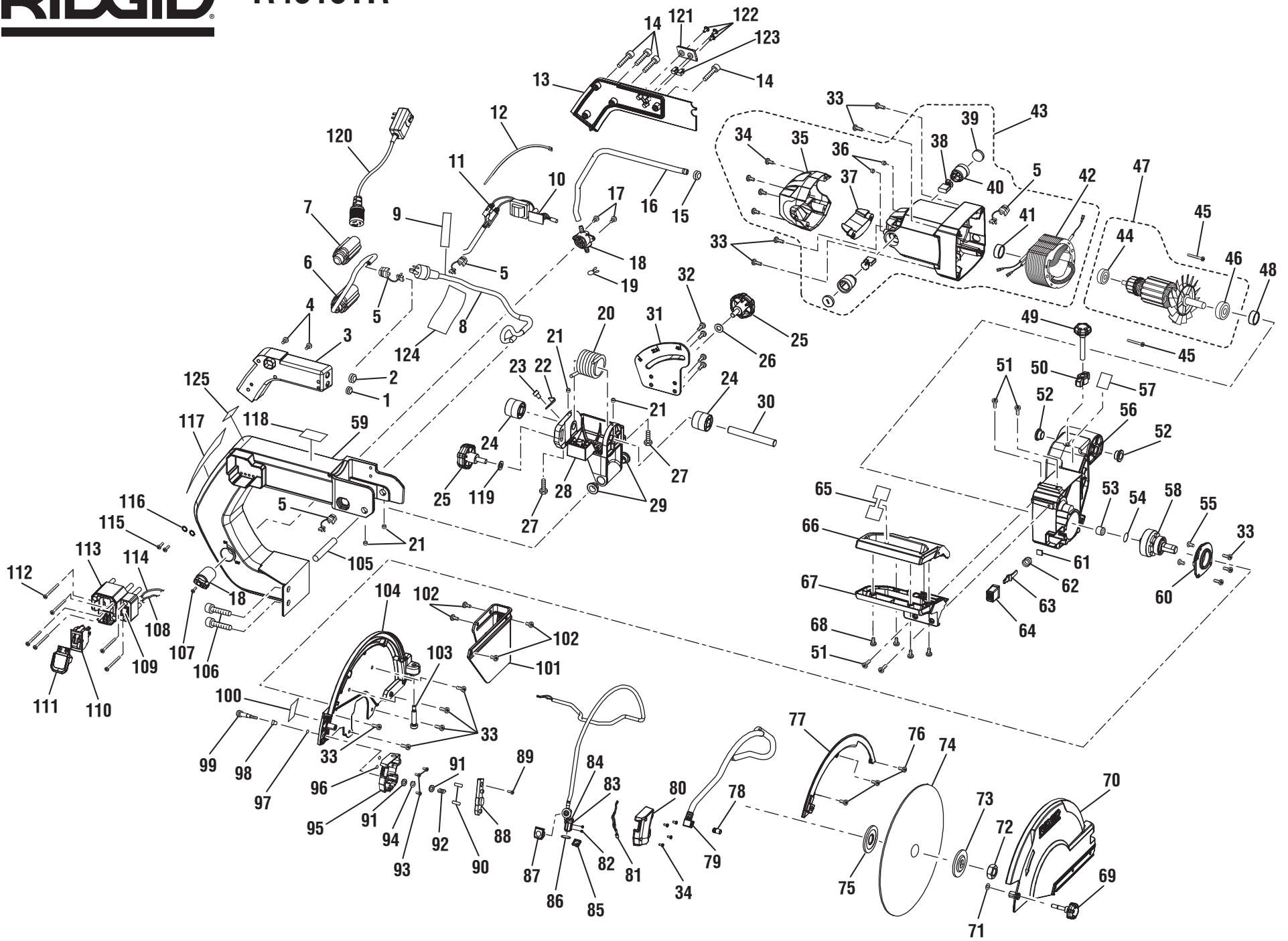


### FIGURE A





R4010TR

PARTS LIST FOR FIGURE A

KEY	P/N	DESCRIPTION	QTY	KEY	P/N	DESCRIPTION	QTY	KEY	P/N	DESCRIPTION	QTY
1	080009002041	Grommet (11 mm).....	1	26	080009005093	Washer (D8 x D16 x 2t).....	1	50	080009005097	Depth Control Nut .....	1
2	080009005069	Grommet (3/8 in.).....	1	27	080009005092	Screw (M6 x 20 mm, Hex Hd.).....	2	51	080009006111	Screw (M5 x12 mm, Pan Hd.).....	4
3	080009005071	Electric Box .....	1	28	080009006708	Bevel Assembly (Incl. Key No. 29).....	1	52	080009005156	Bushing.....	2
4	080009005033	Screw (M5 x 10 mm).....	2	29	080009005165	Bushing.....	2	53	080009006119	Needle Bearing (Hk1010).....	1
5	080009005077	Strain Relief .....	4	30	080009005157	Motor Arm Pivot Shaft .....	1	54	080009006114	O-Ring (D47.35 x 1.8t).....	1
6	080009006079	Receptacle.....	1	31	080009006176	Bevel Plate.....	1	55	080009006120	Screw (M5 x 6 mm).....	2
7	080009005079	Receptacle Cover .....	1	32	080009005162	Screw (M6 x 10 mm, Hex Soc. Hd.) .....	4	56	080009006709	Motor Arm Assembly (Incl. Key Nos. 52-53 and 57).....	1
8	080009016001	Power Cord.....	1	33	080009005118	Screw (M5 x 16 mm, Pan Hd.).....	12	57	080009005907	Depth Stop Adjust Label .....	1
9	080009002910	Danger Label (GFCI).....	1	34	080009005124	Screw (M4 x 12 mm, Pan Hd.).....	8	58	080009006710	Arbor Assembly .....	1
10	080009006706	Transformer Assembly.....	1	35	080009006122	End Cap.....	1	59	080009006704	Support Arm Assembly (Incl. Key Nos. 5, 117-118 and 125).....	1
11	080009005072	Terminal Block .....	1	36	080009005116	Set Screw (M5 x 5 mm) .....	2	60	080009006112	Bearing Bracket .....	1
12	080009005089	Tie Band (Cv180) .....	1	37	080009006123	Water Proof Baffle .....	1	61	080009006106	Felt.....	1
13	080009005087	Electric Box Cover.....	1	38	080009006129	Brush .....	2	62	080009005026	Spring .....	1
14	080009005088	Screw (M5 x 10 mm).....	4	39	080009006128	Brush Cap.....	2	63	080009006104	Spindle Lock.....	1
15	080009005059	Grommet (4 mm).....	1	40	080009006130	Brush Holder.....	2	64	080009006103	End Cap.....	1
16	080009006068	Hose .....	1	41	080009006124	Sleeve .....	1	65	080009005903	Hang Tag (Warning) .....	1
17	080009005066	Screw (M4 x 10 mm, Pan Hd.).....	2	42	080009006712	Field Assembly .....	1	66	080009005099	Upper Plunge Handle .....	1
18	080009005705	Water Valve Assembly .....	1	43	080009006711	Motor Housing Assembly (Incl. Key Nos. 5, 34-42) .....	1	67	080009005098	Lower Plunge Handle .....	1
19	080009005240	Hose Clamp.....	1	44	080009002085	Ball Bearing (608 2rs C3).....	1	68	080009005124	Screw (M4 x 12 mm, Pan Hd.).....	4
20	080009006173	Torsion Spring.....	1	45	080009006127	Screw (M5 x 75 mm, w/Washer).....	2	69	080009005151	Wheel Guard Lock.....	1
21	080009005160	Set Screw (M4 x 8 mm) .....	4	46	080009006137	Ball Bearing (6202 2rs C3).....	1	70	080009006167	Outer Wheel Guard.....	1
22	080009005090	Indicator.....	1	47	080009006713	Armature Assembly (Incl. Key Nos. 44 and 46).....	1	71	080009005150	C-Ring (C5).....	1
23	080009005091	Screw (M5 x 8mm, Pan Hd.).....	1	48	080009006125	Bushing.....	1	72	080009002063	Hex Nut.....	1
24	080009005159	Spacer .....	2	49	080009005096	Depth Control Knob.....	1	73	080009006187	Flange (Outer) .....	1
25	080009005094	Lock Knob .....	2								

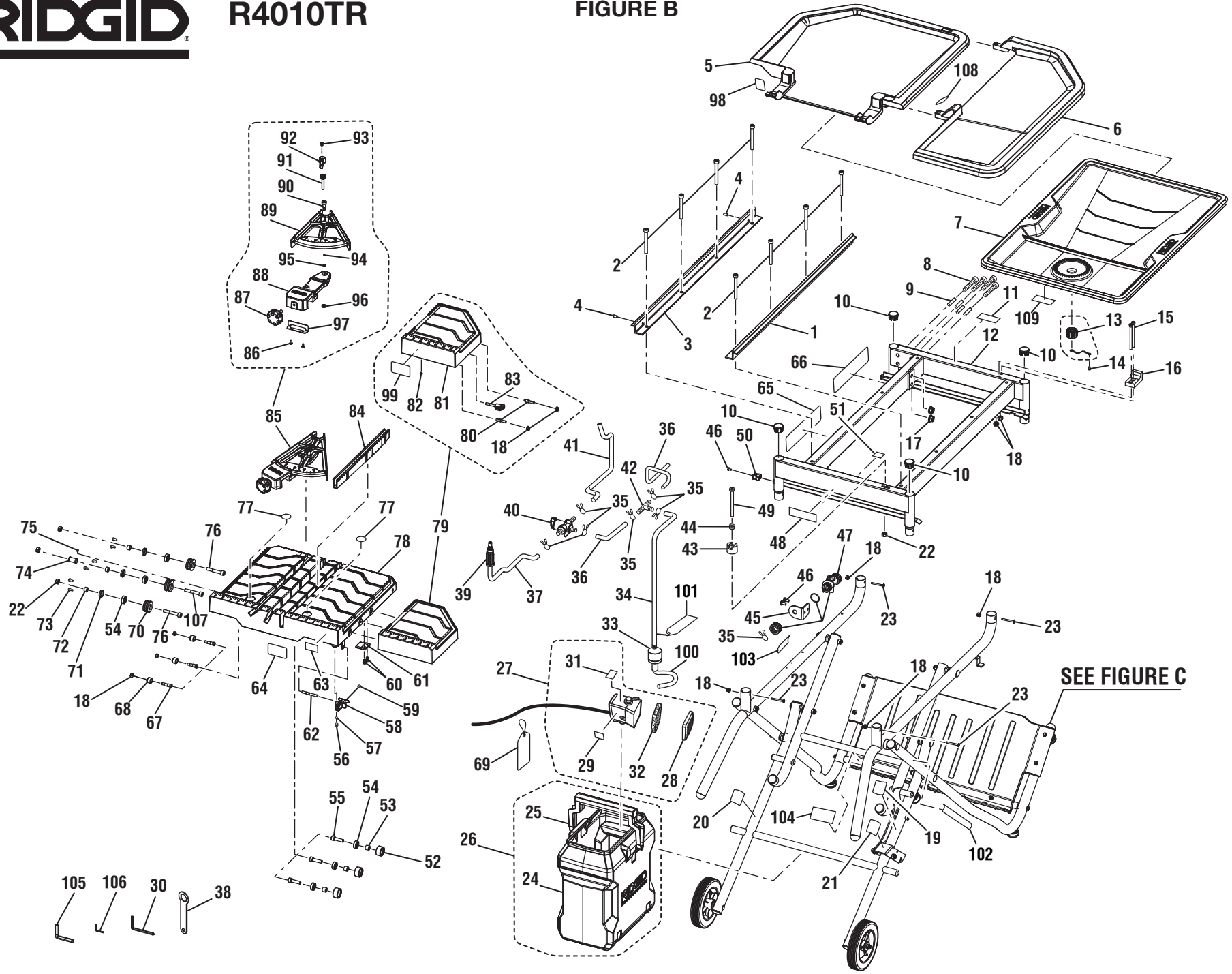


R4010TR

PARTS LIST FOR FIGURE A

KEY	P/N	DESCRIPTION	QTY	KEY	P/N	DESCRIPTION	QTY	KEY	P/N	DESCRIPTION	QTY
74	080009006003	Wheel (10 in.)	1	93	080009005132	Screw (M3 x 6 mm)	3	112	080009005084	Screw (M4 x 55 mm, Pan Hd.)	6
75	080009006186	Flange (Inner)	1	94	080009005129	E-Ring	1	113	080009006084	Switch Box	1
76	080009005148	Screw (M4 x 6 mm)	3	95	080009005128	Laser Cover (Inner)	1	114	080009006089	Pump Wiring (1)	1
77	080009006161	Hose Cover	1	96	080009005080	O-Ring	2	115	080009005082	Screw (M4 x 8 mm, Pan Hd.)	2
78	080009005145	Nozzle	1	97	080009005056	Washer (D6.2 x D14 x 0.2t)	1	116	080009005081	Washer (M4, Serrated)	2
79	080009005144	Barbed Fitting w/ Nozzle	1	98	080009005035	Bushing	1	117	080009002908	Caution Label (Receptacle)	1
80	080009005141	Laser Cover (Outer)	1	99	080009005717	Laser Adjustment Knob Assembly	1	118	080009005902	Warning Label	1
81	080009005135	LED	1	100	080009005904	Laser Warning Label	1	119	080009005243	Washer (D8 x D20 x 2t)	1
82	080009005140	Set Screw (M3 x 3 mm)	2	101	080009006169	Splash Guard	1	120	080009016706	GFCI w/Female Plug Assembly	1
83	080009005138	Adjust Block	1	102	080009005155	Screw (M5 x 8 mm)	4	121	080009006006	Wrench Storage	1
84	080009006070	Laser Module	1	103	080009005153	Pivot Shaft	1	122	080009006008	Screw (M4 x 9 mm, Cntr. Sunk)	3
85	080009005139	Dust Cover (LED)	1	104	080009006139	Inner Wheel Guard	1	123	080009006007	Hex Key Storage	1
86	080009005137	Dust Cover (Laser)	1	105	080009006181	Shaft	1	124	080009016911	User Interface Label 11	1
87	080009006147	Circuit Board (PCB)	1	106	080009005168	Screw (M10 x 50 mm, Hex Soc. Hd.)	2	125	080009016909	User Interface Label 9	1
88	080009005043	Locate Plate	1	107	080009005065	Screw (M3 X 25 mm, Pan Hd.)	1	<b>NOT SHOWN:</b>			
89	080009005143	Screw (M4 x 8 mm, Pan Hd.)	1	108	080009006090	Pump Wiring (2)	1	987000994	Operator's Manual (Pump)	1	
90	080009005047	Laser Pin (D3 x 22 mm)	2	109	080009006088	Pump Switch	1	987000979	Operator's Manual (R4010TR)	1	
91	080009005130	Washer (D6.4 x 12 x 1.6t)	2	110	080009006707	Switch Assembly (Incl. Key No. 111)	1	2-3-11 (REV:03)			
92	080009005131	Laser Adjustment Spring	1	111	080009005086	Switch Key	1				

### FIGURE B



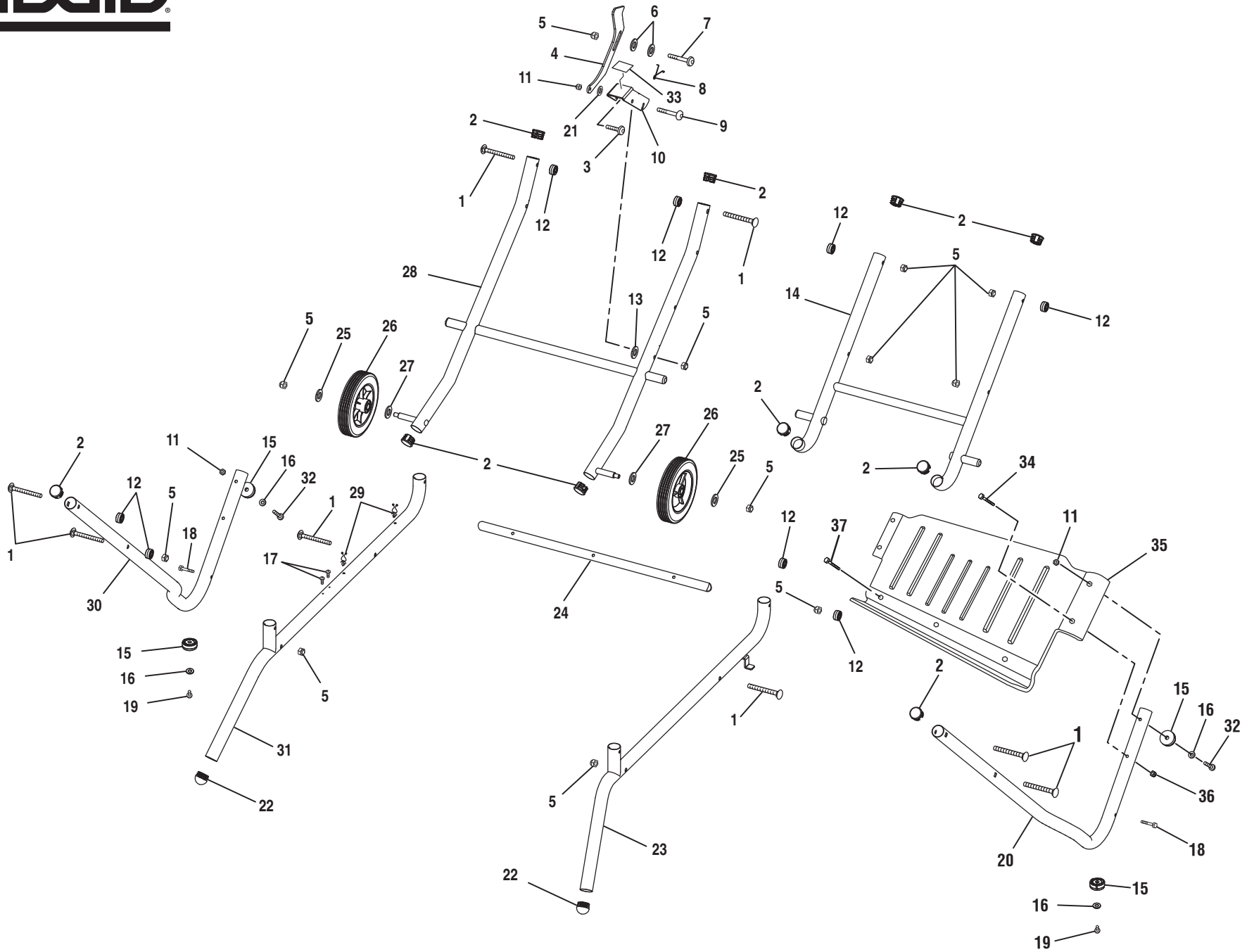


R4010TR

PARTS LIST FOR FIGURE B

KEY	P/N	DESCRIPTION	QTY	KEY	P/N	DESCRIPTION	QTY	KEY	P/N	DESCRIPTION	QTY
1	080009005021	Right Rail .....	1	37	080009005202	Hose (915 mm) .....	1	74	080009006001	Guide Bushing.....	1
2	080009005018	Bolt (M8 x 70 mm, Hex Soc. Hd.).....	8	38	080009002106	Wheel Wrench .....	1	75	080009005042	Screw (M5 x 5 mm-FIX).....	1
3	080009005020	Left Rail.....	1	39	080009005199	Cleaning Nozzle.....	1	76	080009005044	Shoulder Bolt (M8 x 50 mm, Hex Soc. Hd.) .....	2
4	080009005019	Set Screw (M8 x 12 mm, Nylock) .....	2	40	080009005722	Diverter Valve Assembly .....	1	77	080009005905	No Hands Label.....	2
5	080009005005	Water Tray Extension.....	1	41	080009005067	Hose (700 mm) .....	1	78	080009006703	Table Assembly (Incl. Key Nos. 63-64, 77, 84) .....	1
6	080009006005	Water Tray Extension (Right Side) .....	1	42	080009006238	Barbed Fitting (T) .....	1	79	080009006719	Extension Table Assembly (Incl. Key Nos. 18, 80-83, 99) .....	1
7	080009005701	Water Tray Assembly.....	1	43	080009005023	Table Stop (Front) .....	1	80	080009006208	Locator Pin .....	2
8	080009005170	Screw (M10 x 80 mm, Hex Soc. Hd.) .....	4	44	080009005026	Compression Spring.....	1	81	080009006207	Extension Table .....	1
9	080009005006	Sleeve .....	4	45	080009006281	Bracket (L) .....	1	82	080009006213	Set Screw (M5 x 5 mm) .....	1
10	080009005022	Plug (D28.6 mm).....	4	46	080009005082	Screw (M4 x 8 mm, Pan Hd.) .....	3	83	080009006720	Extension Knob Assembly.....	1
11	080009016914	Data Label .....	1	47	080009006729	Hose Connector .....	1	85	080009005719	Miter Gauge Assembly (Incl. Key Nos. 86-97) .....	1
12	080009005702	Frame Assembly.....	1	48	080009005911	Logo Label (Frame).....	1	86	080009005181	Screw (M4 x 8 mm).....	2
13	080009005002	Drain Plug .....	1	49	080009005024	Screw (M8 x 77 mm, Front Stopper) .....	1	87	080009005094	Lock Knob .....	1
14	080009005004	Screw (M4 x 6 mm, Pan Hd.).....	1	50	080009005204	Clip (Cleaning Nozzle).....	1	88	080009005173	Miter Guide Bracket .....	1
15	080009005028	Bolt (M6 x 75 mm, Hex Hd.) .....	2	51	080009005908	Table Stop Label.....	1	89	080009005172	Miter Guide Fence .....	1
16	080009005027	Rear Table Stop .....	1	52	080009006055	Guide Roller.....	3	90	080009005177	Miter Gauge Pivot Shaft .....	1
17	080009005169	Hex Nut (M10).....	2	53	080009005055	Guide Roller Spacer .....	3	91	080009005178	Shoulder Screw .....	1
18	080009005029	Hex Nut (M6) .....	8	54	080009005037	Ball Bearing (608) .....	6	92	080009005176	Lock Knob .....	1
19	080009016903	User Interface Label (3) .....	1	55	080009005057	Shoulder Bolt (Hex Hd.).....	3	93	080009005179	Screw (M6 x 10 mm).....	1
20	080009016908	User Interface Label (8) .....	1	56	080009005051	Spring .....	1	94	080009005182	Ball (D8) .....	1
21	080009005910	Stand Latch Label .....	1	57	080009005050	Ball (4 mm).....	1	95	080009005183	Spring .....	1
22	080009005025	Hex Nut (M8).....	4	58	080009005048	Table Lock Block .....	1	96	080009005180	Hex Nut (M6).....	1
23	080009005233	Carriage Bolt (M6 x 35 mm).....	4	59	080009005052	Set Screw (M5 x 5 mm) .....	1	97	080009005175	Miter Guide Plate.....	1
24	080009005184	Water Tank.....	1	60	080009005033	Screw (M5 x 8 mm, Pan Hd.).....	2	98	080009016905	User Interface Label (5) .....	1
25	080009005185	Handle, Water Tank .....	1	61	080009005034	Plate (Table Assembly).....	1	99	080009016907	User Interface Label (7) .....	1
26	080009005720	Water Tank Assembly (Incl. Key Nos. 24, 25).....	1	62	080009005049	Table Lock Shaft.....	1	100	080009006234	Hose (50 mm) .....	1
27	080009006730	Pump Assembly (Incl. Key Nos. 28-29 and 31-32).....	1	63	080009005906	Table Lock Label.....	1	101	080009016910	User Interface Label (10) .....	1
28	080009006004	End Cap, Water Pump.....	1	64	080009016904	User Interface Label (4) .....	1	102	080009005909	WSUV Logo Label .....	1
29	080009005913	Water Pump Logo.....	1	65	080009016913	Set Up Label .....	1	103	080009005912	Diverter Valve Label.....	1
30	080009002107	Hex Key (6 mm) .....	1	66	080009016912	Tear Down Label.....	1	104	080009016902	User Interface Label (2) .....	1
31	080009005918	Data Plate (Pump) .....	1	67	080009005046	Eccentric.....	3	105	080009006029	Hex Key (8 mm) .....	1
32	080009006019	Filter, Water Pump .....	1	68	080009005045	Roller (Fixed).....	3	106	080009006028	Hex Key (4 mm) .....	1
33	080009006239	Check Valve .....	1	69	080009004912	Hang Tag (French/Spanish) .....	1	107	080009006002	Eccentric Screw.....	1
34	080009006233	Hose (250 mm) .....	1	70	080009006038	Roller .....	3	108	080009016906	User Interface Label (6) .....	1
35	080009005240	Hose Clamp.....	7	71	080009005038	Spacer (Large) .....	3	109	080009016901	User Interface Label (1) .....	1
36	080009006235	Hose (330 mm) .....	2	72	080009005039	Spacer (Small) .....	3				
				73	080009005040	Screw (M63 x 4 mm, Pan Hd.).....	6				

### FIGURE C



## PARTS LIST FOR FIGURE C

KEY	P/N	DESCRIPTION	QTY	PIÈCE RÉF.	DESCRIPTION	QTÉ	REF.	N/P	DESCRIPCIÓN	CANT.
	080009016705	Complete Stand Assembly (Inc Key Nos. 1-33).....	1	080009016705	Complet de ensemble de stand (incl. pièces no. 1-33).....	1	080009016705		Conjunto del pedestal de completo (incl. pzas. núms. ref. 1-33).....	1
1	080009005224	Carriage Bolt (M8 x 77 mm).....	8	1 080009005224	Boulon à collet carré (M8 x 77 mm).....	8	1 080009005224		Perno de carrocería (M8 x 77 mm).....	8
2	080009005022	Plug (D28.6, Stand).....	10	2 080009005022	Fiche (D28.6, stand).....	10	2 080009005022		Clavija (D28.6, pedestal).....	10
3	080009005227	Screw (M6 x 17 mm, Hex Soc. Hd.)....	1	3 080009005227	Vis (M6 x 17 mm, à tête creuse hexagonale).....	1	3 080009005227		Tornillo (M6 x 17 mm, cabeza hueca hexagonal).....	1
4	080009005221	Latch.....	1	4 080009005221	Loquet.....	1	4 080009005221		Pestillo.....	1
5	080009005025	Hex Nut (M8).....	12	5 080009005025	Écrou hexagonal (M8).....	12	5 080009005025		Tuerca hexagonal (M8).....	12
6	080009005235	Washer (D8 x D16 x 2.5t).....	2	6 080009005235	Rondelle (D8 x D16 x 2.5t).....	2	6 080009005235		Arandela (D8 x D16 x 2.5t).....	2
7	080009005234	Screw (M8 x 47 mm, Hex Soc. Hd.)....	1	7 080009005234	Vis (M8 x 47 mm, à tête creuse hexagonale).....	1	7 080009005234		Tornillo (M8 x 47 mm, cabeza hueca hexagonal).....	1
8	080009005223	Spring.....	1	8 080009005223	Ressort.....	1	8 080009005223		Resorte.....	1
9	080009005044	Shoulder Bolt (M8 x 50 mm, Hex Soc. Hd.).....	1	9 080009005044	Boulon à épaulement (M8 x 50 mm, à tête creuse hexagonale).....	1	9 080009005044		Perno de cuello grueso (M8 x 50 mm, cabeza hueca hexagonal).....	1
10	080009005245	Press Plate.....	1	10 080009005245	Plaque de pression.....	1	10 080009005245		Placa de prensa.....	1
11	080009005029	Hex Nut (M6).....	3	11 080009005029	Écrou hexagonal (M6).....	3	11 080009005029		Tuerca hexagonal (M6).....	3
12	080009004082	Spacer.....	8	12 080009004082	Entretoise.....	8	12 080009004082		Separador.....	8
13	080009005117	Washer (D8 x D16 x 1.5t).....	1	13 080009005117	Rondelle (D8 x D16 x 1.5t).....	1	13 080009005117		Arandela (D8 x D16 x 1.5t).....	1
14	080009016704	Center Brace.....	1	14 080009016704	Renfort central.....	1	14 080009016704		Riostra central.....	1
15	080009005228	Pad.....	4	15 080009005228	Coussinet.....	4	15 080009005228		Almohadilla.....	4
16	080009005102	Washer (D6 x D14 x 1t).....	4	16 080009005102	Rondelle (D6 x D14 x 1t).....	4	16 080009005102		Arandela (D6 x D14 x 1t).....	4
17	080009005082	Screw (M4 x 8 mm, Pan Hd.).....	2	17 080009005082	Vis (M4 x 8 mm, à tête bombée).....	2	17 080009005082		Tornillo (M4 x 8 mm, cabeza truncocónica).....	2
18	080009005232	Bolt (M6 x 35 mm, Hex Hd.).....	2	18 080009005232	Boulon (M6 x 35 mm, tête hex.).....	2	18 080009005232		Perno (M6 x 35 mm, cabeza hexagonal).....	2
19	080009016012	Right Outer Tube.....	1	19 080009016012	Tube extérieure droit.....	1	19 080009016012		Tornillo (M6 x 16 mm, cabeza hueca hexagonal).....	2
20	080009005241	Round Cap (D28.6).....	2	20 080009005241	Capuchon rond (D28.6).....	2	20 080009016012		Tubo exterior derecho.....	1
21	080009016701	Right Upper Tube Assembly.....	1	21 080009016701	Ensemble tube supérieur droit.....	1	21 080009005149		Arandela (D6 x D16 x 0.5t).....	1
22	080009016014	Lower Brace.....	1	22 080009016014	Traverse inférieure.....	1	22 080009005241		Tapa redonda (D28.6).....	2
23	080009005093	Washer (D8 x D16 x 2t).....	2	23 080009005093	Rondelle (D8 x D16 x 2t).....	2	23 080009016701		Conjunto del tubo superior derecho....	1
24	080009006010	Wheel (8 in.).....	2	24 080009006010	Roue (8 po).....	2	24 080009016014		Riostra inferior.....	1
25	080009005238	Washer (D28 x D15 x 2t).....	2	25 080009005238	Rondelle (D28 x D15 x 2t).....	2	25 080009005093		Arandela (D8 x D16 x 2t).....	2
26	080009016703	Inner Leg Assembly.....	1	26 080009016703	Ensemble de pattes internes.....	1	26 080009006010		Rueda (8 pulg.).....	2
27	080009005200	Water Line Clip.....	2	27 080009005200	Attache de la conduite d'eau.....	2	27 080009005238		Arandela (D28 x D15 x 2t).....	2
28	080009016013	Left Outer Tube.....	1	28 080009016013	Tube extérieure gauche.....	1	28 080009016703		Conjunto de la pata interna.....	1
29	080009016702	Left Upper Tube.....	1	29 080009016702	Tube supérieur gauche.....	1	29 080009005200		Sujetador para la línea de agua.....	2
30	080009005187	Screw (M6 x 40 mm, Hex Soc. Hd.)....	2	30 080009005187	Vis (M6 x 40 mm, à tête creuse hexagonale).....	2	30 080009016013		Tubo exterior izquierdo.....	1
31	080009005916	Latch Label.....	1	31 080009005916	Étiquette de loquet.....	1	31 080009016702		Tubo superior izquierdo.....	1
32	080009005188	Screw (M6 x 35 mm, Hex Hd.).....	2	32 080009005188	Vis (M6 x 35 mm, tête hex.).....	2	32 080009005187		Tornillo (M6 x 40 mm, cabeza hueca hexagonal).....	2
33	080009005186	Ready Rack™.....	1	33 080009005186	Ready Rack™.....	1	33 080009005916		Etiqueta de pestillo.....	1
34	080009005180	Hex Nut (M6).....	5	34 080009005180	Écrou hexagonal (M6).....	5	34 080009005188		Tornillo (M6 x 35 mm, cabeza hexagonal).....	2
35	080009005230	Screw (M6 x 25 mm, Hex Hd.).....	3	35 080009005230	Vis (M6 x 25 mm, tête hex.).....	3	35 080009005186		Ready Rack™.....	1
							36 080009005180		Tuerca hexagonal (M6).....	5
							37 080009005230		Tornillo (M6 x 25 mm, cabeza hexagonal).....	3