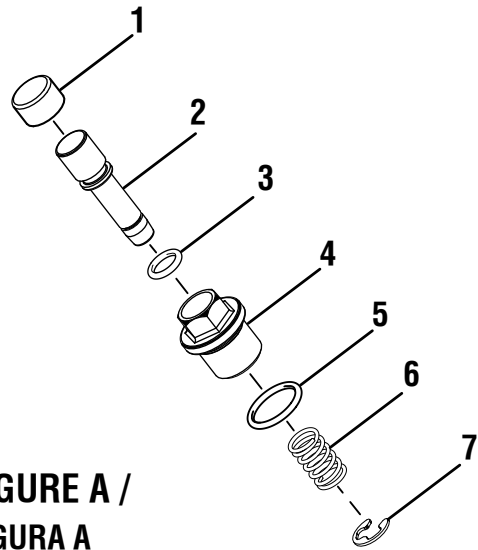


KEY	P/N	DESCRIPTION	QTY	KEY	P/N	DESCRIPTION	QTY	KEY	P/N	DESCRIPTION	QTY
1	660389001	Blade Screw (3/8-16 in. x 19.5 mm, Hex Hd. Left Handed Threads).....	1	27	636525001	Bearing Cover.....	1	54	512010001	Brush Cap	2
2	680776001	Spring Washer	1	28	570040003	Pressure Diaphragm.....	1	55	301036001	Brush Assembly	2
3	680775003	Outer Blade Washer	1	29	671503001	Retaining Ring (40 mm)	1	56	204026001	Handle Assembly.....	1
4 *	690019013	Blade (7-1/4 in.)	1	30	671024001	Retaining Ring (17 mm)	1	57	660024044	Screw (M4 x 16 mm, T20 Torx Pan Hd.).....	13
5	680774004	Inner Flange Bushing.....	1	31	204024001	Pinion Assembly w/Bearing.....	1	58	941002266	Logo Label.....	1
6	671216002	Retaining Ring	1	32	204153001	Gear Case Assembly w/Bearing.....	1	59	551060005	Bend Relief	1
7	551004001	Lower Guard Sleeve	1	33	529702001	Saw Hanger Sleeve	1	60	730377067	Power Cord	1
8	204041001	Lower Blade Guard Assembly (Incl. Key No. 10)	1	34	204038001	Shaft Lock w/Button Assembly.....	1	61	760677015	Switch.....	1
9	671018004	Torsion Spring	1	35	670030009	Washer (OD7.2 x ID4.1 x 1t)	1	62	660320001	Screw (M3.5 x 7 mm, Pan Hd.).....	4
10	671381002	Hub Ring.....	1	36	661633001	Screw (M3.5 x 10 mm, T15 Torx Pan Hd.).....	1	63	204155001	Base Assembly (Incl. Key Nos. 64-68)	1
11	660385016	Screw (M5 x 15 mm, T25 Torx Pan Hd.).....	14	37	528761001	Shroud	1	64	690002006	Washer (OD17 x ID9.5 x 1.5t)	2
12	528766001	Blade Guard Support	1	38	673416001	Magnet	1	65	660408003	Cap Nut (5/16 in.)	2
13	636450001	Plate-Spacer (Special).....	1	39	528760001	Front Handle.....	1	66	301048001	Lever Assembly	2
14	204039001	Flange w/Bearing Assembly.....	1	40	660385014	Screw (M5 x 20 mm, T25 Torx Pan Hd.).....	1	67	680374003	E-Ring.....	2
15	563724001	O-Ring	1	41	694681001	Hex Key Wrench (M6.5 x 22.5 mm x 116 mm).....	1	68	673386001	Carriage Bolt (5/16-18 x 29.5 mm)	1
16	204154001	Output Shaft Assembly (Incl. Key Nos. 17-21)	1	42	671016002	Compression Spring.....	1	69	660384003	Set Screw (M5 x 10 mm)	1
17	620254008	Output Shaft.....	1	43	671009001	Bushing	1	70	673491001	Shoulder Screw (M6 x 38 mm, T30 Torx Pan Hd.).....	1
18	631118001	Woodruff Key.....	1	44	671020001	Split Roll Pin	1	71	671033002	Hex Nut (M6)	1
19	695054001	Spacer	1	45	671021001	Saw Hanger.....	1	72	670252002	Lock Washer.....	1
20	610936005	Worm Gear	1	46	660103002	Screw (#8-10 x 2.65 in., Pan Hd.).....	2	73	511129001	Knob (Optional).....	1
21	690939001	Shaft Lock Disc	1	47	206468001	Motor Assembly w/Bearing.....	1	74	204025001	Edge Guide (Incl. Key No. 72) (Optional)	1
22	661245001	Shoulder Screw (M6 x 20 mm, T30 Torx Flat Hd.).....	1	48	636820001	Wavy Washer.....	1				
23	561984001	Rubber Bumper.....	1	49	941121657	Data Label	1				
24	941120160	Warning Label.....	1	50	204040001	Motor Housing Assembly (Incl. Key No. 49)	1				
25	204115001	Upper Blade Guard (Incl. Key No. 24) .	1	51	621838001	Bolt (5-16-18 x 17.9 mm, Hex Hd.)	1				
26	660380008	Screw (M3 x 10 mm, T10 Torx Pan Hd.).....	6	52	636465001	Retainer Plate.....	1				
				53	660279011	Screw (M4 x 12 mm, Flat Hd.).....	2				

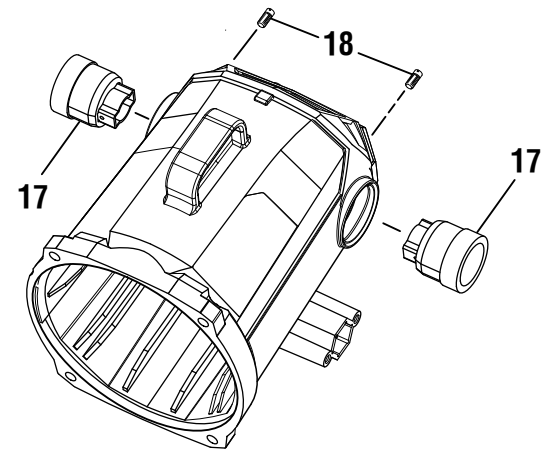
Not Shown:

991000821 Operator's Manual
8-5-16
(Rev:02)

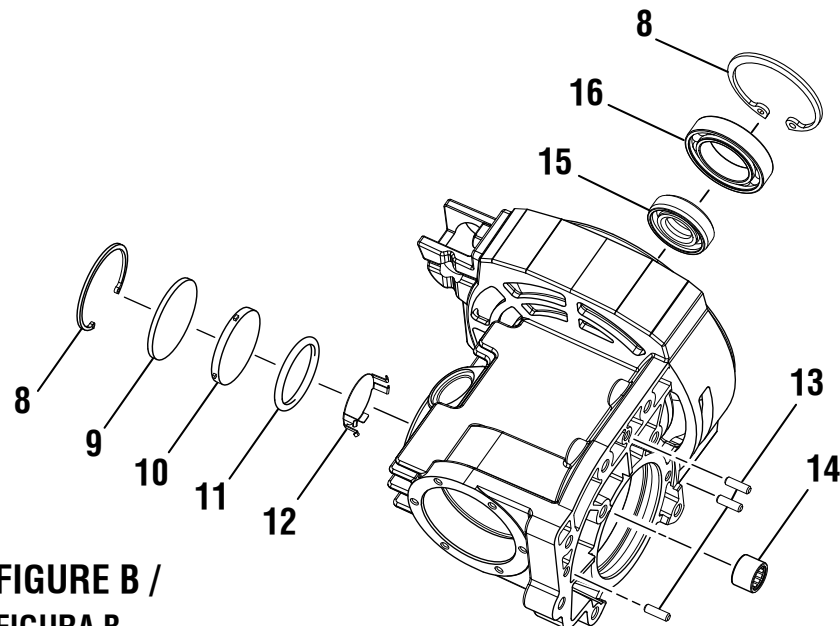
* Standard Hardware Item – May Be Purchased Locally



**FIGURE A /
FIGURA A**



**FIGURE C /
FIGURA C**



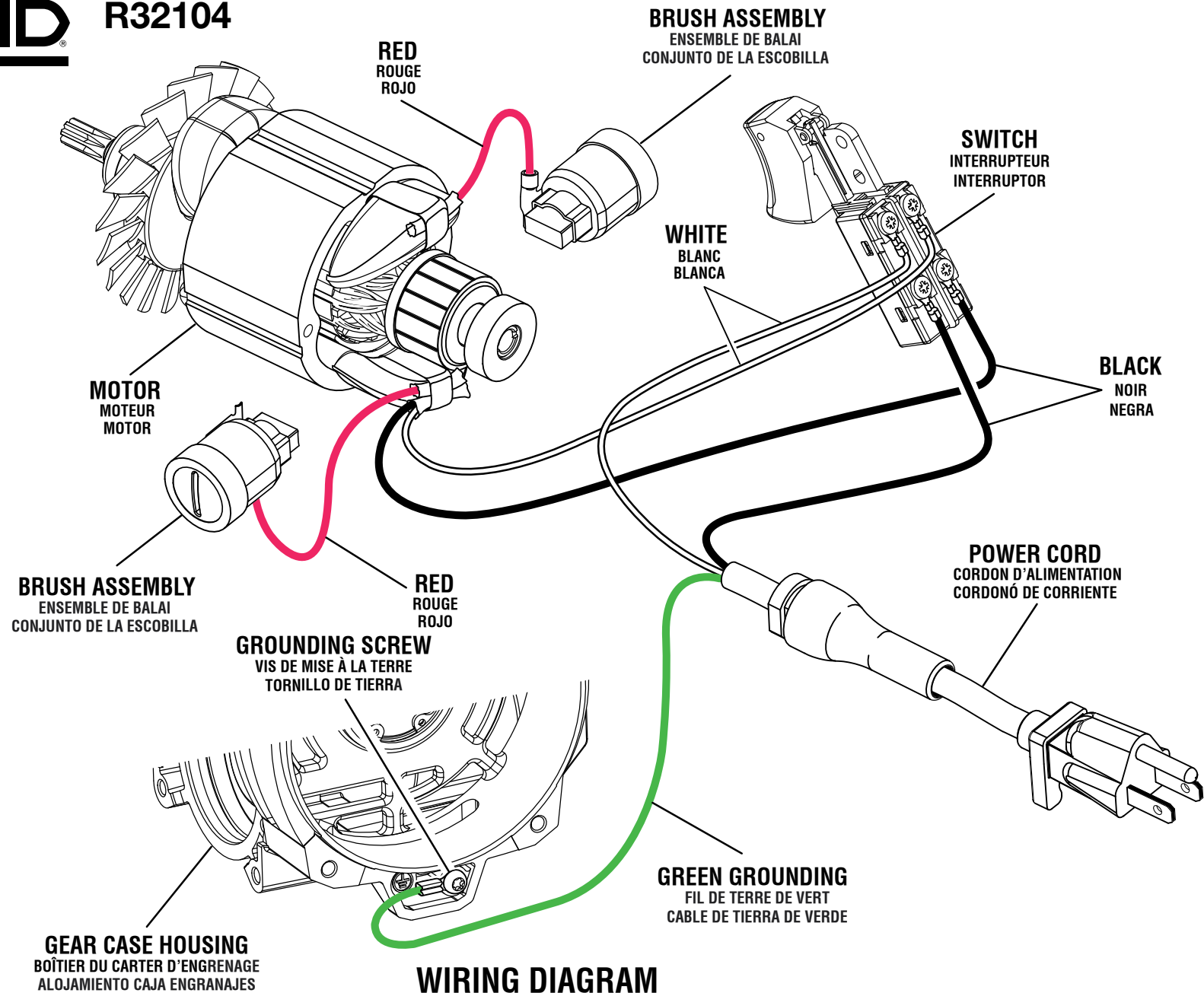
**FIGURE B /
FIGURA B**



R32104

PARTS LIST

KEY PART NO.	PART NUMBER	DESCRIPTION	QTY	CLÉ NO.	RÉF. DE PIÈCE	DESCRIPTION	QTÉ	NÚM REF.	NÚM PIEZA	DESCRIPCIÓN	CANT.
Figure A:				Figure A:				Figura A:			
1	512761001	Cap	1	1	512761001	Capuchon	1	1	512761001	Tapa	1
2	673359001	Spindle Lock Pin	1	2	673359001	Axe de verrouillage de broche	1	2	673359001	Pasador de seguridad del husillo...	1
3	563745001	O-Ring.....	1	3	563745001	Joint torique	1	3	563745001	Junta tórica	1
4	694883001	Gland Bushing	1	4	694883001	Douille glande	1	4	694883001	Buje de la glándula	1
5	563746001	O-Ring.....	1	5	563746001	Joint torique	1	5	563746001	Junta tórica	1
6	694680001	Compression Spring	1	6	694680001	Ressort de compression.....	1	6	694680001	Resorte de compresión.....	1
7	694722001	E-Ring	1	7	694722001	Agrafe en E	1	7	694722001	Anillo en "E"	1
Figure B:				Figure B:				Figura B:			
8	671025001	Retaining Ring (32 mm).....	2	8	671025001	Anneau de retenue (32 mm).....	2	8	671025001	Aro de retención (32 mm).....	2
9	514364001	Sight Window	1	9	514364001	Vitre d'observation	1	9	514364001	Mirilla.....	1
10	528762001	Oil Level Indicator	1	10	528762001	Indicateur de niveau d'huile	1	10	528762001	Indicador del nivel de aceite	1
11	570670001	O-Ring (Sight Glass)	1	11	570670001	Joint torique (voyant fenêtre)	1	11	570670001	Junta tórica (visor).....	1
12	637218001	Reflector.....	1	12	637218001	Réflecteur.....	1	12	637218001	Reflector.....	1
13	671019001	Roll Pin.....	3	13	671019001	Goupille.....	3	13	671019001	Pasador	3
14	680582002	Needle Bearing	1	14	680582002	Roulement à aiguilles.....	1	14	680582002	Cojinete de agujas	1
15	563735001	Oil Seal.....	1	15	563735001	Joint d'huile.....	1	15	563735001	Aceite el sello	1
16	671012004	Ball Bearing.....	1	16	671012004	Roulement à bille	1	16	671012004	Cojinete de bolas	1
Figure C:				Figure C:				Figura C:			
17	301035001	Brush Holder Assembly	2	17	301035001	Assemblage support de porte-charbon	2	17	301035001	Conjunto del tubo de la escobilla ..	2
18	660568003	Set Screw (M3.5 x 9mm, T7 Torx Soc. Hd.)	2	18	660568003	Vis d'arrêt (M3.5 x 9mm, T7 à tête creuse Torx).....	2	18	660568003	Tornillo fijador (M3.5 x 9mm, T7 cabeza hueca Torx)	2



WIRING DIAGRAM SCHÉMA DE CÂBLAGE DIAGRAMA DE CABLEADO