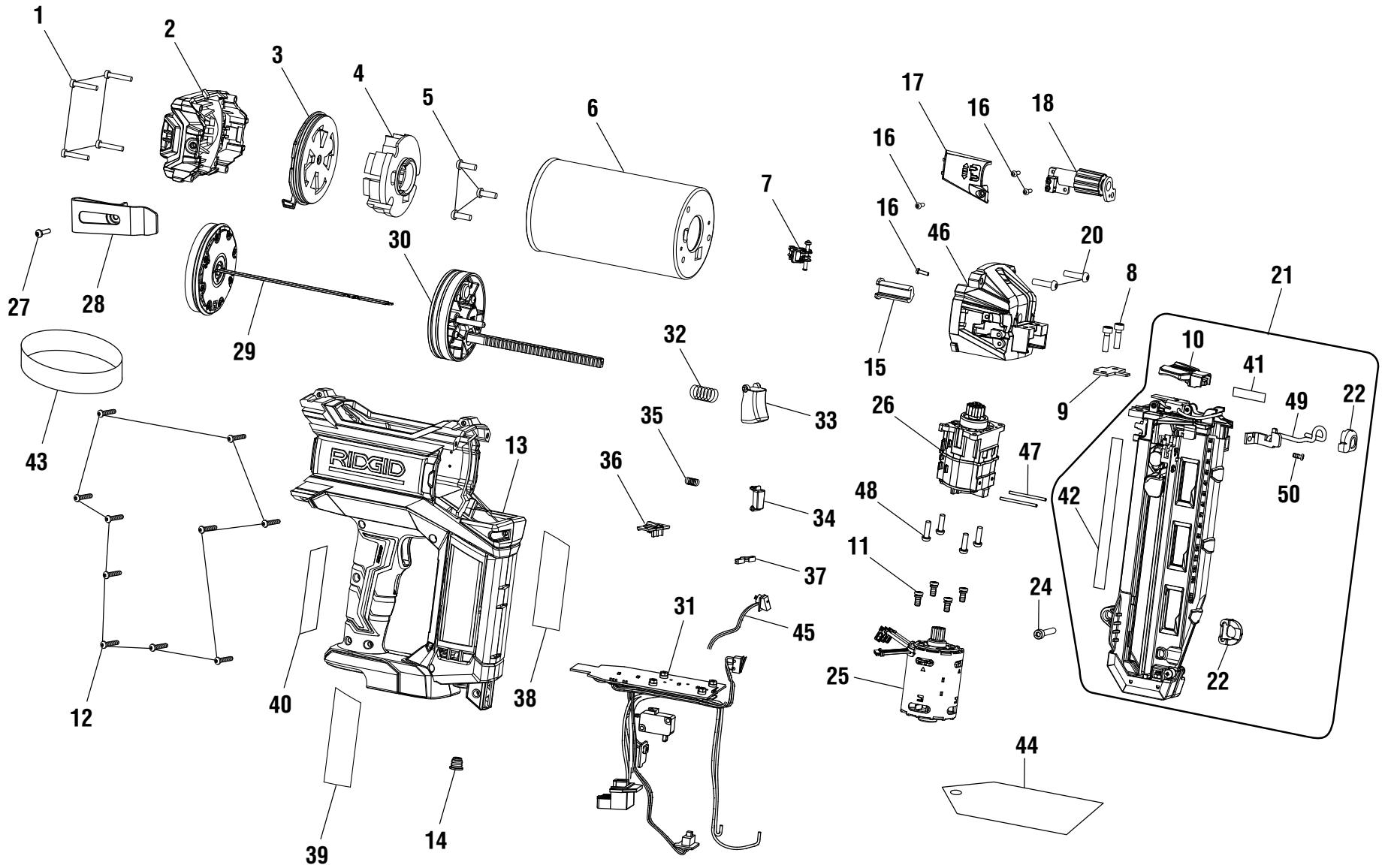


**RIDGID**  
**18V Finish Nailer**  
**Model No. R09892**  
**Repair Sheet**

**RIDGID**  
**Cloueuse de finition 18 V**  
**No. de modèle R09892**  
**Feuille de réparation**

**RIDGID**  
**Clavadora de acabado de 18 V**  
**Modelo R09892**  
**Listas de piezas de repuesto**





R09892

KEY NO.	PART NUMBER	DESCRIPTION	QTY
1	662393001	Screw (M5 x 22 mm, Hex Soc. Hd.)	4
2	307512003	End Cap	1
3	203770002	Filter Shutter Assembly (Inc. Key Nos. 1-2)	1
4	563591001	Bumper	1
5	660385016	Screw (M5 x 15 mm, T25 Torx Pan Hd.)	3
6	203714001	Cylinder w/Label	1
7	203771001	Latch Assembly	1
8	662027001	Screw w/Washer (M5 x 18 mm, Hex Soc. Hd.)	2
9	635087002	Drive Blade Cover	1
10	528134001	Latch Pusher	1
11	662088003	Screw w/Washer (M5 x 10.5 mm, Pan Hd.)	4
12	660031029	Screw (M3.5 x 16 mm, T10 Torx Pan Hd.)	10
13	203772002	Housing Assembly (Inc. Key Nos. 38-39)	1
14	529147001	Elevation Screw Cover	1
15	563236002	Rack Guide	1
16	660380008	Screw (M3 x 10 mm, T10 Torx Pan Hd.)	4
17	528160001	Depth of Drive Cover	1
18	203774001	Depth Adjustment Assembly (Inc. Key Nos. 16-17)	1
19	660169079	Screw w/Nylock (M4 x 6 mm, Hex Soc. Hd.)	1
20	660385014	Screw (M5 x 24 mm, T25 Torx Pan Hd.)	2
21	203775002	Magazine Assembly (Inc. Key Nos. 10, 22 and 41-42)	1
22	531878001	No-Mar Pad	2
23	670974002	Lock Nut (M5)	1
24	661154001	Screw (M5 x 30 mm, Hex Soc. Hd.)	1
25	206408001	Motor Assembly	1
26	203777001	Gearbox Assembly (Inc. Key Nos. 47-48)	1
27	660212001	Screw (M4 x 6 mm, Pan Hd.)	1
28	636720001	Belt Hook	1

KEY NO.	PART NUMBER	DESCRIPTION	QTY
29	206402001	Driver Piston Assembly	1
30	203779001	Elevator Piston Assembly	1
31	203780001	Circuit Board Assembly (Inc. Key No. 45)	1
32	694199001	Compression Spring	1
33	524418003	Trigger	1
34	524852003	LED Worklight Grip Switch	1
35	692784001	Compression Spring	1
36	524689003	Mode Selector Switch	1
37	634401001	Spring Plate	1
38	941002157	Logo Label	1
39	941114113	Warning Label	1
40	941114112	Instruction Label	1
41	941488127	Fastener Specification Label	1
42	941488126	Data Label	1
43	941114110	Trigger Wrap Warning Label	1
44	961152369	Danger Label Hangtag	1
45	291522001	LED Assembly	1
46	203964001	Gearbox Cover (Inc. Key No. 20)	1
47	673225003	Pin	2
48	660414015	Screw (M4 x 14 mm, T20 Torx Pan Hd.)	4
49	636241004	Safety Contact	1
50	660169068	Screw (M4)	1

**Not Shown:**

- 991000360 Operator's Manual
- 206403002 Piston Maintenance Kit
- 203818002 WCE Maintenance Kit
- 203781001 Seal Kit
- 903209091 Tool Bag
- 203196001 Nails (16 Gauge, 2 in., 500 pieces)

3-27-18  
(Rev:04)