

# INSTALLATION INSTRUCTIONS

## PZ 60 inch Side Discharge Deck Kit - 966555302

### Tools Required


- ½" socket or wrench (battery terminals, strut shaft).
- ½" breaker bar with 2-3" extension (relieve tension on idler arms).

Refer to Operators Manual when needed.

### PZ Cutting Deck Installation

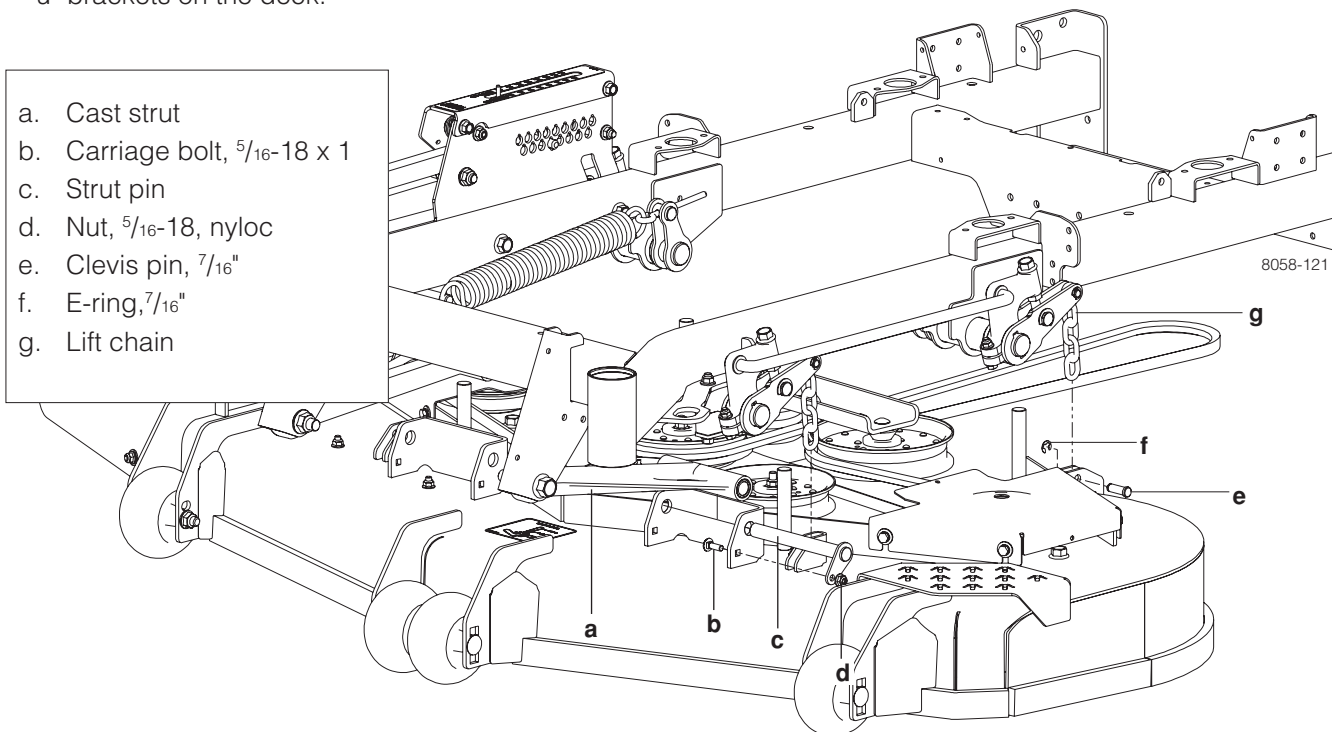
1. Disconnect negative cable from battery on the chassis.
2. If installing the deck on a diesel unit, remove the belt from the deck assembly and use the belt included with the chassis.
3. Make sure the deck is latched in the transport position (furthest forward position).
4. Slide the deck under the chassis.
5. Block the deck up with boards, pallet, or pallet jack, so the deck lift chains line up with the brackets on the deck.
6. Using the  $\frac{7}{16}$  clevis pins\* and E-rings\*, connect all four chains to the deck.
7. Line up the cast struts on the chassis with the u- brackets on the deck.
8. Slide the strut pins\* through the deck brackets and cast struts on each side.
9. Secure the strut pins to the deck on each side with  $\frac{5}{16}$ " carriage bolts\* and nuts\*.
10. Remove the block from under the deck.
11. Lower the deck to the 3" cutting height.
12. Remove deck belt shields.

**WARNING!**



The deck lift system on the chassis has springs that assist in lifting the deck. Leave the deck lift in the transport position when installing the deck. Failure to follow these instructions could result in injury.

- a. Cast strut
- b. Carriage bolt,  $\frac{5}{16}$ -18 x 1
- c. Strut pin
- d. Nut,  $\frac{5}{16}$ -18, nyloc
- e. Clevis pin,  $\frac{7}{16}$ "
- f. E-ring,  $\frac{7}{16}$ "
- g. Lift chain

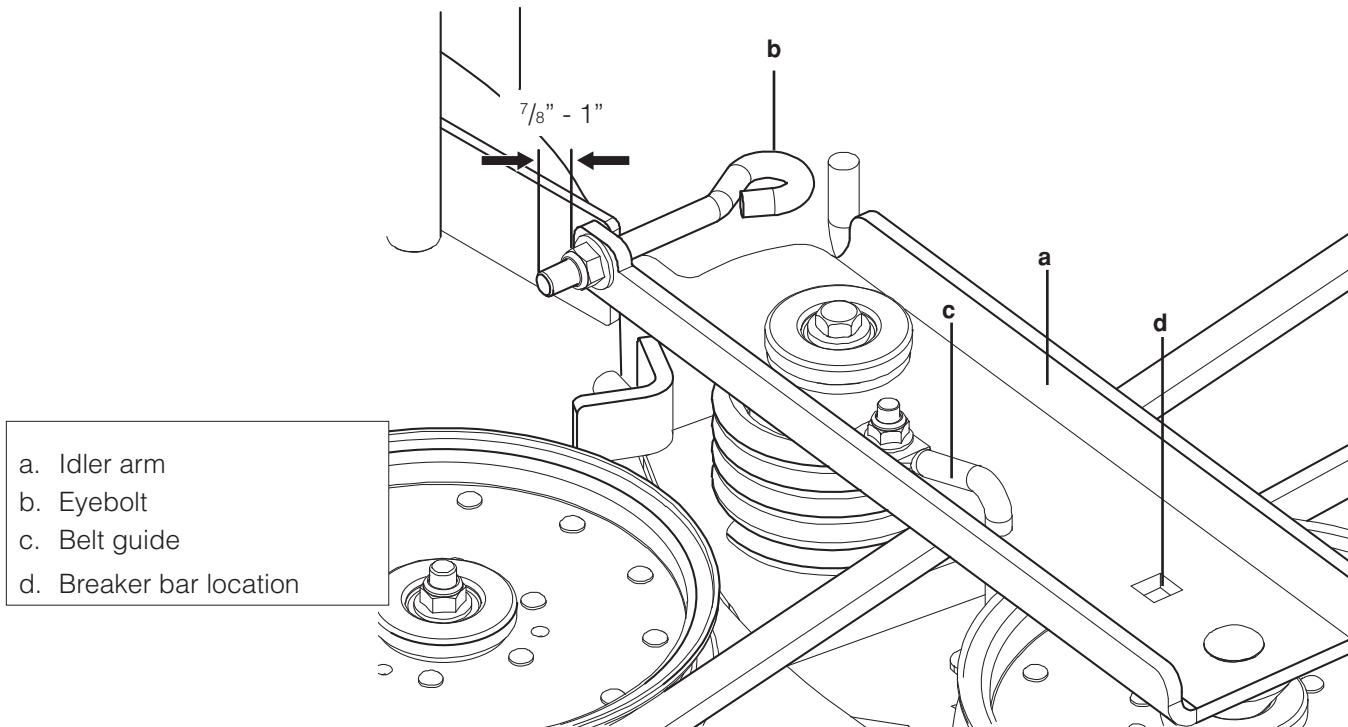


# INSTALLATION INSTRUCTIONS

## Deck Belt Installation

NOTE: For ease in installing the deck belt, refer to the routing decal on the cutting deck.

- Place the belt around all the pulleys except the center spindle pulley.
- With a  $\frac{1}{2}$ " breaker bar, shift the idler arm counter clockwise. When there is enough slack, slip the belt onto the center spindle pulley.

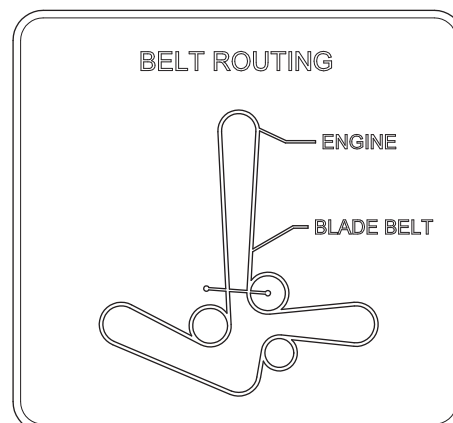


- Install the belt guide.

*Adjust belt tension*

8065-054

- Double check belt routing to make sure it matches the routing decal, and that the belt does not have any twist. Correct if needed.
- Adjust belt tension by turning the eyebolt until there is approximately  $\frac{7}{8}$ " - 1" of threads showing outside the nut.
- Belt tension will be set to 60-70 lbs.
- Replace belt shields on both mandrel housings and secure with fasteners.



8065-047

# INSTALLATION INSTRUCTIONS

## Deck Leveling

Adjust the deck while the mower is on a level surface. Make sure the tires are inflated to the correct pressure. See *Tire Pressures* in **Maintenance** section of your Operators Manual. If tires are under or over inflated, the deck cannot be properly adjusted. Faulty mower deck adjustments will cause an uneven mowing result.

Four bolts control the height and pitch of the mower deck. The deck should be adjusted slightly higher in the rear.

NOTE: To insure accuracy of leveling procedure, mower deck drive belt must be installed prior to leveling the deck.

20. Wear heavy gloves. Turn each outer blade tip to align the deck in a side-to-side manner.
21. Measure from the floor surface up to the bottom of the blade tip on the discharge side of the mower deck. Retain this measurement. Move to the opposite side; check that measurement is the same. If adjustment is required, loosen the locknut and adjust bolt up until both side-to-side measurements are equal. Retain measurement.



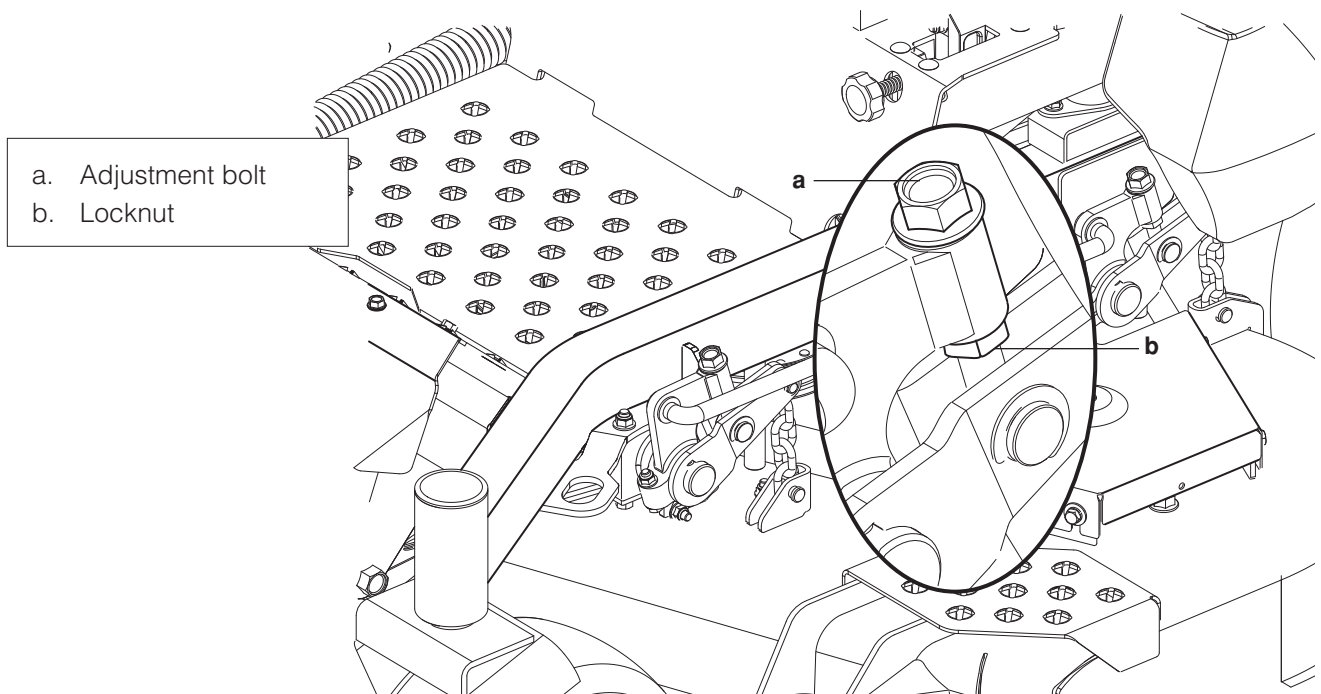
### WARNING!



**Blades are sharp. Protect your hands with gloves and/or wrap blades with a heavy cloth when handling.**

22. Turn both outer blades to align with the deck in front-to-rear manner. Reposition rear mounting bolts up or down until rear blade tips are positioned  $\frac{1}{8}$ " to  $\frac{3}{8}$ " higher in the rear than the front blade tips.
23. Confirm measurements once again. Blade tip height should be equal in a side-to-side manner. In the rear, blade tips should be  $\frac{1}{8}$ " to  $\frac{3}{8}$ " higher than the front measurement. In the front, blade tips should be equal from side-to-side.

NOTE: This will place the mower deck in a base measurement position. Additional adjustment may be required to achieve desired cut for the type of grass or conditions being mowed.



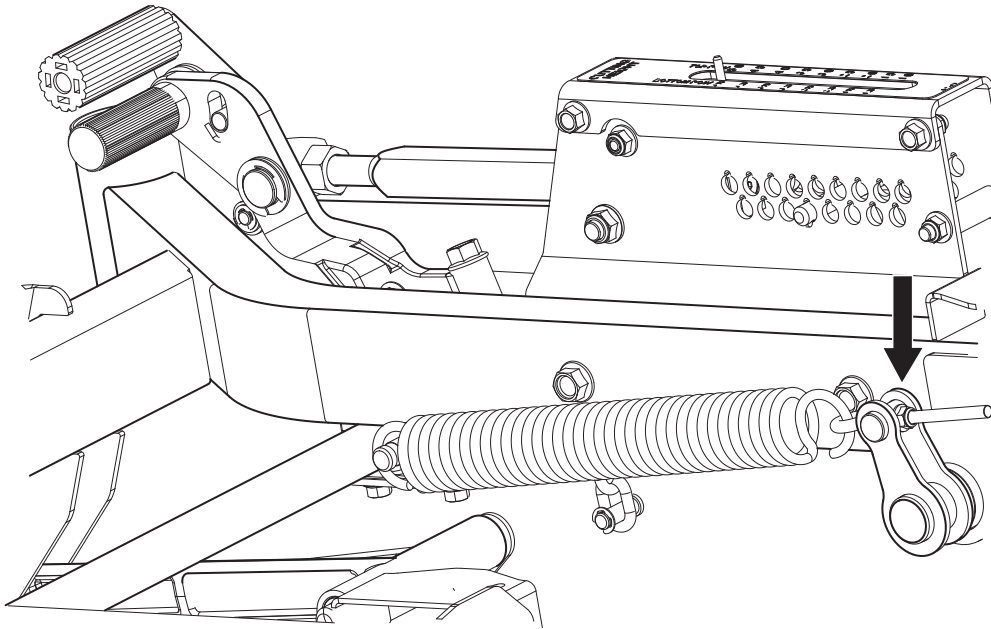
# INSTALLATION INSTRUCTIONS

---

## Deck Lift Spring

When mowing 2" or lower, it may be necessary to adjust the deck lift springs. Access the springs by tilting the seat forward.

24. Loosen the nut and adjust the spring tension.
25. Reconnect negative cable to the battery when deck installation is complete.



*Deck lift spring*

8065-062

# INSTALLATION INSTRUCTIONS

## Anti-scalp Rollers

Anti-scalp rollers keep the deck in the proper position to help prevent scalping in most terrain conditions. Do not adjust the rollers to support the deck.

### IMPORTANT INFORMATION

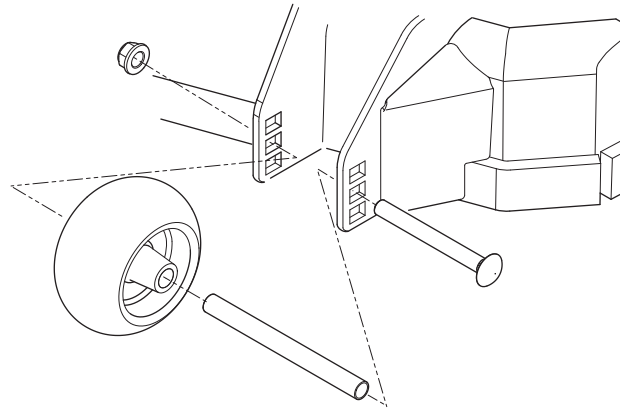
**Adjust anti-scalp rollers with the mower on a flat level surface.**

The **anti-scalp rollers** can be set in three positions:

- Upper position 1 to 2½" (25 to 63 mm) grass.
- Middle position 2½" to 4" (63 to 102 mm) grass.
- Lower position 4" to 5" (102 to 127 mm) grass.

### IMPORTANT INFORMATION

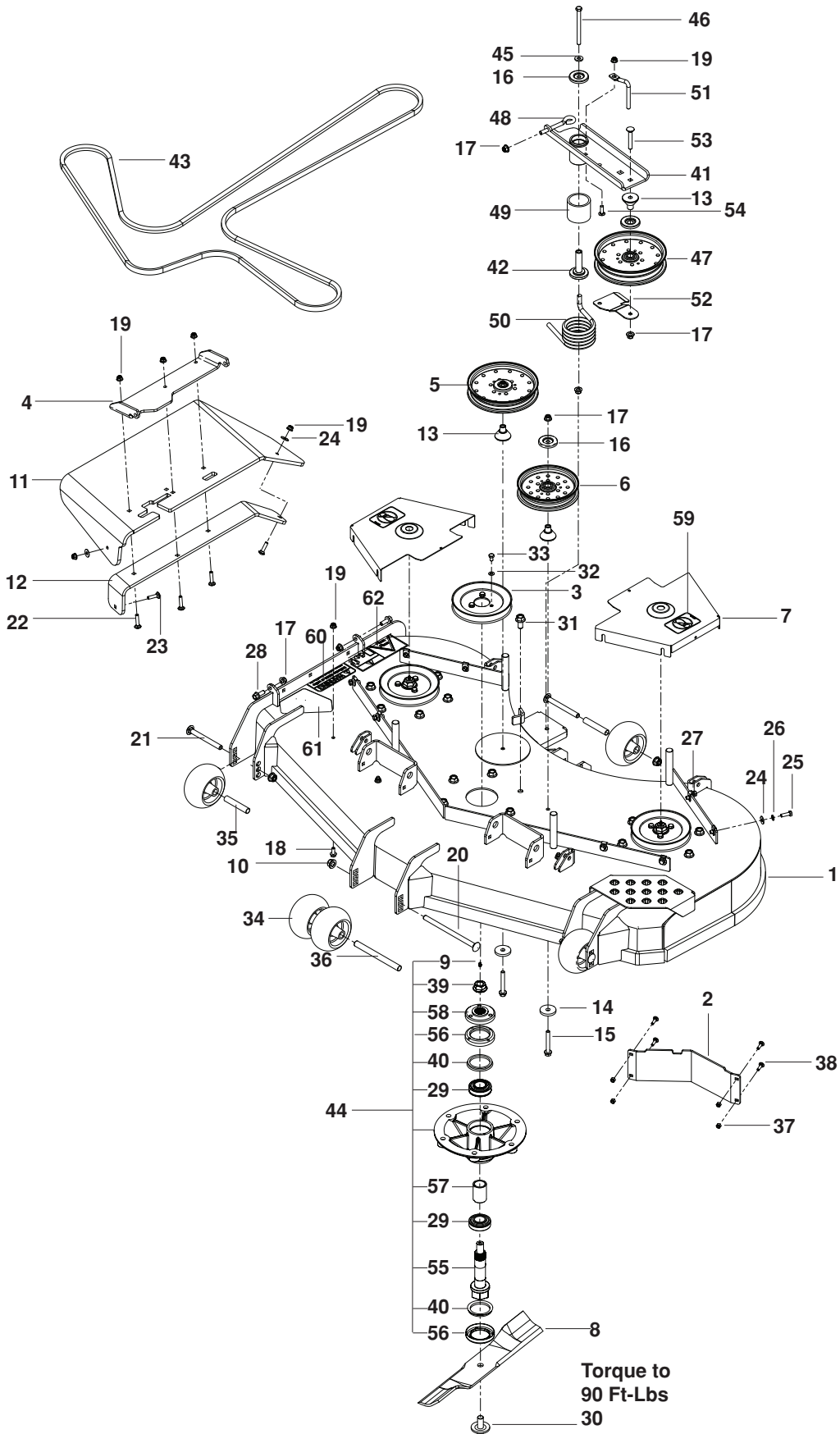
**The anti-scalp rollers must not be used for gauge wheels or the roller and deck may be damaged.**



*Anti-scalp rollers*

8065-029

# PARTS LIST



# PARTS LIST

ITEM	PART NO.	QTY.	DESCRIPTION	ITEM	PART NO.	QTY.	DESCRIPTION
1..	574 497201....1	....	DECK w/ SAFETY DECALS	37..	539 976978....4	....	NUT ¼-20 HEX NYLOC
2..	510 437502....1	....	BAFFLE, FLOW DIVERTER	38..	539 115620....4	....	BOLT ¼-20 x 1 RD HD
3..	539 130646....3	....	PULLEY	39..	539 130653....3	....	NUT ¾-16 FLG
4..	574 197002....1	....	BRACKET, CHUTE PIVOT	40..	539 130639....6	....	V-RING
5..	525 598201....1	....	PULLEY, IDLER 7" NARROW	41..	574 722201....1	....	IDLER ARM w/ BRGS, SPCR
6..	510 019601....1	....	PULLEY, IDLER, 6"	42..	522 729701....1	....	BEARING, IDLER PIVOT
7..	510 131202....2	....	SHIELD, BELT	43..	575 658403....1	....	BELT, DECK Gasoline or Propane Models
8..	539 105711....3	....	BLADE, 21"		522 860201 ...1	....	BELT, DECK Diesel Model
9..	539 976998....3	....	ZERK	44..	525 836401....3	....	SPINDLE ASSY
10..	521 991101....4	....	NUT ½-13 HEX FLG NYLOC	45..	522 023401....1	....	WASHER ¾ THICK
11..	525 485801....1	....	CHUTE, DISCHARGE	46..	539 101686....1	....	BOLT ¾-16 x 4½ HEX GR 8
12..	525 486002....1	....	BRACKET, CHUTE SUPPORT	47..	510 015101....1	....	PULLEY, IDLER 7" WIDE
13..	510 263701....3	....	BEARING, IDLER ARM	48..	574 202001....1	....	EYEBOLT ¾ x 4
14..	539 106504....3	....	WASHER, HEAVY	49..	525 465601....1	....	SPACER, IDLER PIVOT
15..	539 131781....2	....	SCREW ¾-16 x 2¾ HEX FLG	50..	525 310901....1	....	SPRING, TORSION
16..	510 254501....3	....	SHIELD, DUST	51..	574 262201....1	....	KEEPER, BELT
17..	521 996501....4	....	NUT ¾-16 HEX FLG NYLOC	52..	574 262102....1	....	GUIDE, BELT
18..	525 464701....3	....	SCREW 5/16-18 x ¾ HEX FLG	53..	539 128101....1	....	BOLT ¾-16 x 2½ CARRIAGE
19..	539 112899....9	....	NUT 5/16-18 HEX FLG NYLOC	54..	539 107271....1	....	BOLT 5/16-18 x 1 RD HD
20..	510 022401....1	....	BOLT ½-13 x 8 RD HD	55..	525 836001....3	....	SHAFT, SPINDLE
21..	510 022301....3	....	BOLT ½-13 x 4¾ RD HD	56..	539 130643....6	....	CUP, DEBRIS
22..	539 102933....3	....	BOLT 5/16-18 x 1½ RD HD	57..	539 130641....3	....	SPACER
23..	539 100472....2	....	BOLT 5/16-18 x 1¼ RD HD	58..	539 130637....3	....	HUB
24..	539 990692....10	....	WASHER 5/16 STD FLT	59..	539 105746....2	....	DECAL, NO STEP
25..	539 990209....8	....	BOLT 5/16-18 x 1 HEX HD	60..	539 113224....1	....	DECAL, WARNING
26..	539 990187....8	....	WASHER 5/16 SLW	61..	539 913010....1	....	DECAL, CPSC
27..	539 104763....8	....	RETAINER, U TYPE	62..	539 105746....1	....	DECAL, SEVERING
28..	525 612801....2	....	SCREW ¾-16 x 1 HEX FLG	NOT SHOWN - OPTIONAL			
29..	539 130638....6	....	BEARING		522 829301 ...3	....	BLADE, HIGH LIFT 21"
30..	539 119007....3	....	BLADE BOLT		574 481301 ...3	....	BLADE, LOW LIFT 21"
31..	574 210601...18	....	SCREW ½-13 x 1 HEX FLG		522 936601 ...3	....	BLADE, GATOR 21"
32..	539 109600....9	....	WASHER 5/16 DISC SPRING		539 109755 ...3	....	BLADE, WAVY REV LIFT 21"
33..	539 130315....9	....	BOLT 5/16-18 x ½ HEX NYLOC				
34..	574 169601....5	....	ROLLER, GAUGE				
35..	574 196401....2	....	TUBE, ROLLER AXLE				
36..	574 196501....1	....	TUBE, ROLLER AXLE LONG				

# INSTALLATION INSTRUCTIONS

HEX HEAD CAP SCREWS							
The torque values shown should be used as a general guideline when specific torque values are not given.							
U.S. Standard Hardware							
Grade	SAE Grade 5			SAE Grade 8		Flangelock Screw w/Flangelock Nut	
Shank Size (Diameter in inches, fine or coarse thread)	ft./lbs	ft./lbs	Nm	ft./lbs	Nm	ft./lbs	Nm
	1/4	9	12	13	18		
	5/16	18	24	28	38	24	33
	3/8	31	42	46	62	40	54
	7/16	50	68	75	108		
	1/2	75	102	115	156		
	9/16	110	150	165	224		
	5/8	150	203	225	305		
	3/4	250	339	370	502		
	7/8	378	513	591	801		
	1 1/8	782	1060	1410	1912		

\*\* Grade 5 - Minimum commercial quality (lower quality not recommended)

Metric Standard Hardware							
Grade	Grade 8.8			Grade 10.9		Grade 12.9	
Shank Size (Diameter in millimeters, fine or coarse thread)	ft./lbs	ft./lbs	Nm	ft./lbs	Nm	ft./lbs	Nm
	M4	1.5	2	2.2	3	2.7	3.6
	M5	3	4	4.5	6	5.2	7
	M6	5.2	7	7.5	10	8.2	11
	M7	8.2	11	12	16	15	20
	M8	13.5	18	18.8	25	21.8	29
	M10	24	32	35.2	47	43.5	58
	M12	43.5	58	62.2	83	75	100
	M14	70.5	94	100	133	119	159
	M16	108	144	147	196	176	235
	M18	142	190	202	269	242	323
	M20	195	260	275	366	330	440
	M22	276	368	390	520	471	628
M24	353	470	498	664	596	794	
M27	530	707	474	996	904	1205	