

PARTS LEGEND

Coil Siding Nailer

PS225C

515900

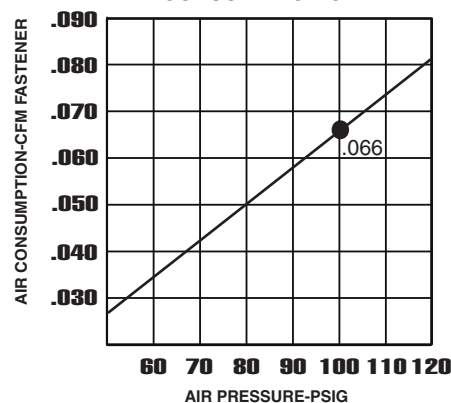
1	502996	1	BHCS M5 x 10mm-P30 Precoat	44A	502986	1	Trigger Assembly, Bump
2	502997	1	Flat Washer	44B	503055	1	Trigger Assy., Sequential
3	502969	1	Air Deflector	→ 45A	219369	1	Magazine Assembly
▲ 4	502998	8	S.H.C.S. M5 x 20mm-P30 Precoat	46	503235	1	Lock Nut, M5
5	502970	1	Cap	47	502989	3	Rubber Washer
6	503236	1	Collar	48	502990	1	Magazine Hinge Pin
7	502971	1	Piston Stop	49A	502991	1	WCE Assembly
8	502972	1	Main Valve Spring	50	502992	2	No-Mar Tip
* 9	503021	1	O-Ring 36.2 x 2.6mm NBR	*51A	502993	1	Depth of Drive Assembly
10	502973	1	Outer Poppet	52	502994	1	Check Pawl Pin
*11	503218	2	O-Ring 46.0 x 3.5mm NBR	53	502995	1	Check Pawl
12	502974	1	Sleeve Retainer	54	503200	1	Check Pawl Spring
13	502975	1	Gasket, Top Cap	→ 55	511187	1	Nail Door
*14	503219	1	O-Ring 38.7 x 3.5mm NBR	56	503202	1	Nail Door Pin Guide
*15A	502976	1	Driver Blade/Piston Assembly	57	502999	1	Nail Door Torsion Spring
16	502977	1	Sleeve	58	503203	1	Nail Door Pin
*17	503220	1	O-Ring 45.7 x 2.6mm NBR	59	503204	1	Feed Cover
*18	503246	1	O-Ring 47.3 x 2.6mm NBR	60	503237	2	Flat Washer 4 x 10mm
19	502978	1	Sleeve Bulkhead Seal	61	503238	1	S.H.C.S. M4 x 5mm
*20	503221	1	O-Ring 68 x 3mm NBR	62	503007	1	Bumper
*21	503222	3	O-Ring 1.9 x 1.9mm NBR	*63	503239	1	O-Ring 47.4 x 1.8mm NBR
22	502979	1	Housing/Handle	64	503240	1	O-Ring 3.7 x 1.8mm NBR
23	503223	1	Roll Pin 3 x 20mm	→ 65	511186	1	Nose
24	503224	1	Roll Pin 3 x 30mm	▲ 66	503241	4	S.H.C.S. M6 x 20mm W/Spring Washer
25	502980	2	Pin, Trigger	67	503207	2	Roll Pin, 2.5 x 12mm
26	502981	1	Gasket, End Cap	68	503208	1	Nail Feed Pawl
27	502982	1	End Cap	69	503209	1	Piston, Nail Feed
▲ 28	503225	1	S.H.C.S. M5 x 16mm	70	503242	1	O-Ring 18 x 2.5mm Viton
29	502983	1	Belt Hook	71	503210	1	Nail Feed Piston Stop
*30	503227	1	O-Ring 15.6 x 1.8mm NBR	72	503211	1	Nail Feed Compression Spring
31	503214	1	Trigger Valve	73	503212	1	Nail Feed Spring Collar
*32	503228	1	O-Ring 17.5 x 1.5mm NBR	74	503243	1	C Ring, 24mm
33	503229	1	O-Ring 5.8 x 1.9mm NBR	75	503244	1	Torsion Spring, Door Latch
34	503215	1	Valve Plunger	76	503213	1	Nail Door Latch
*35	503230	1	O-Ring 6.8 x 1.9mm NBR	77	503245	1	S.H.C.S. M4 x 12mm
*36	503231	1	O-Ring 8.8 x 1.9mm NBR	78	503247	1	Housing Label, LEFT
37	503232	1	Spring	79	503248	1	Housing Label, RIGHT
*38	503216	1	Plunger	80	503249	1	Magazine Door Label
*39	503233	2	O-Ring 2.5 x 1.4mm	**81	503250	1	Magazine Warning Label
*40	503234	1	O-Ring 21 x 1.5mm NBR	*82	503251	1	O-Ring 9.0 x 2.0mm NBR
41	503217	1	Trigger Valve Cap	*83	503252	1	O-Ring 39.7 x 3.5mm NBR
42A	502984	1	Trigger Valve Assembly	*84	511065	2	Wave Washer
43	502985	1	Spring, Trigger				

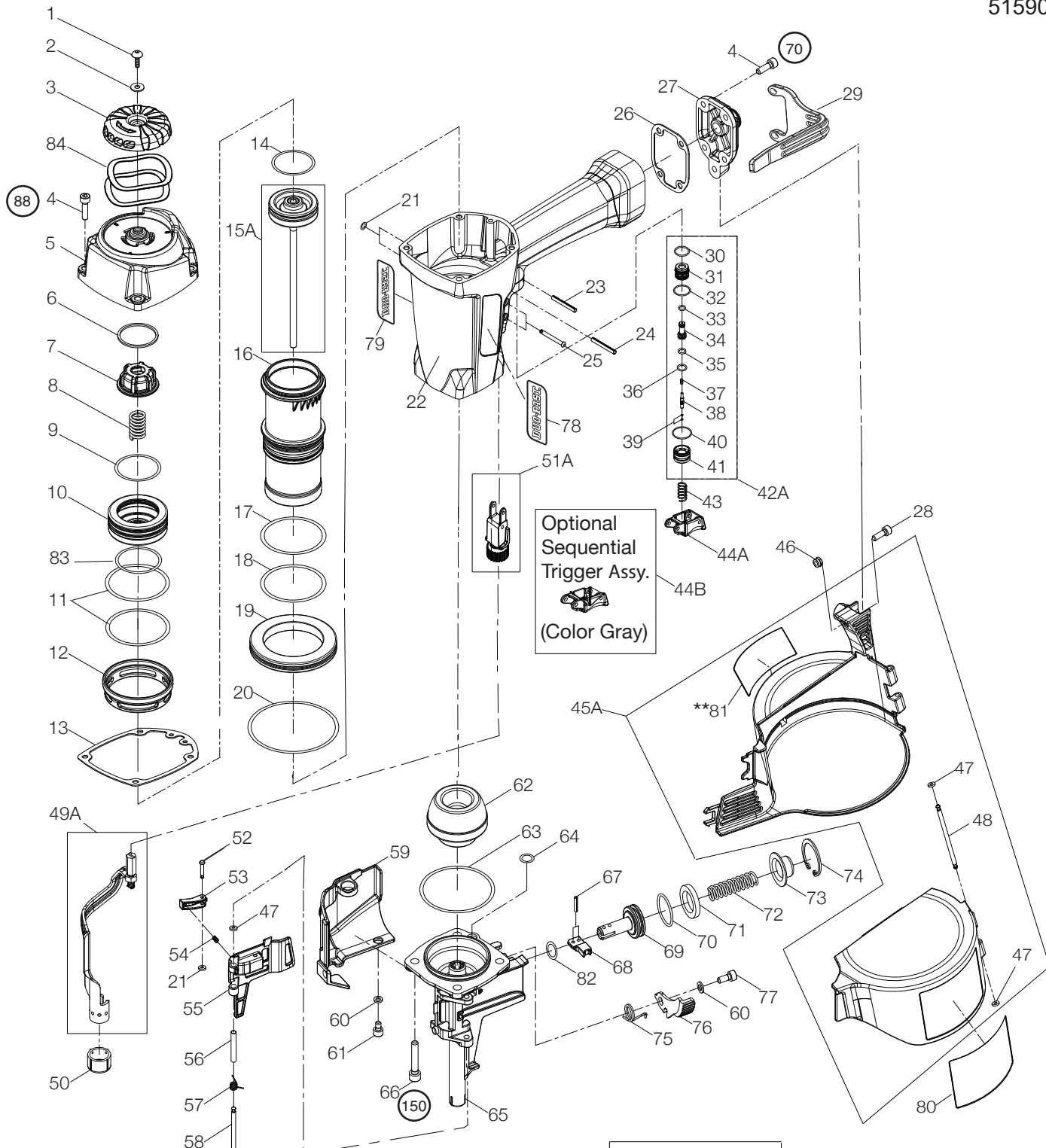
- * Denotes Normal Wear Items
- ** Make sure Warning Label (Part No.503250) is properly affixed. Replace if necessary. Label available at no charge through the Service Department.
- ▲ Apply Loctite® 242 (Blue) Part No. 093500
- Denotes New Change

▲ WARNING

All parts must be periodically inspected and replaced if worn or broken. Failure to do this can affect the tool's operation and present a safety hazard.

AIR CONSUMPTION CHART





Optional
Sequential
Trigger Assy.
(Color Gray)

Torque Values
IN/LBS

150

88

70

150

**81