

# **POWERMATIC®**

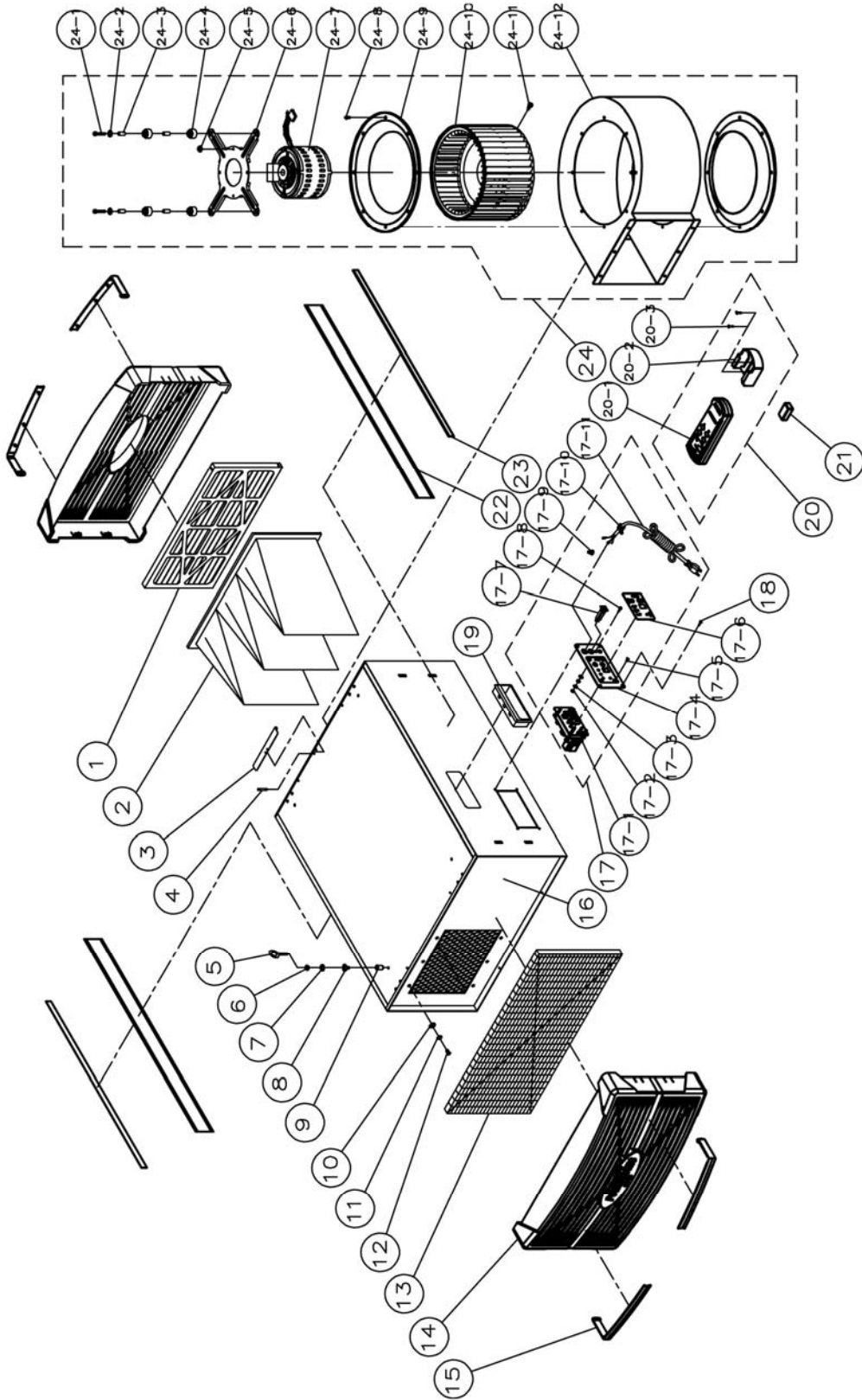
## **Operating Instructions and Parts Manual Air Filtration System Model PM1200**



**Powermatic**  
427 New Sanford Road  
LaVergne, Tennessee 37086  
Ph.: 800-274-6848  
[www.powermatic.com](http://www.powermatic.com)

**Part No. M-1791330**  
Revision B 06/2014  
Copyright © 2014 Powermatic

# Parts Breakdown for PM1200 Air Filtration System



## Parts List for PM1200 Air Filtration System

| Index No. | Part No.    | Description                                 | Size        | Qty |
|-----------|-------------|---------------------------------------------|-------------|-----|
| 1         | 1791083     | Outer Filter for PM1200                     | 12"x24"x1"  | 1   |
| 2         | 1791082     | Inner Filter for PM1200                     | 12"x24"x1"  | 1   |
| 3         | PM1200-03   | Retaining Plate                             |             | 1   |
| 4         | PM1200-04   | Rivet                                       | NSS 4-4     | 2   |
| 5         | PM1200-05   | Eye Bolt *                                  | M6          | 4   |
| 6         | TS-1540041  | Hex Nut *                                   | M6          | 4   |
| 7         | TS-1550041  | Flat Washer *                               | M6          | 4   |
| 8         | TS-1534032  | Phillips Pan Head Machine Screw             | M6x8        | 4   |
| 9         | PM1200-09   | Special Nut                                 | M6          | 4   |
| 10        | TS-1550041  | Flat Washer                                 | M6          | 6   |
| 11        | TS-1551041  | Lock Washer                                 | M6          | 6   |
| 12        | TS-1503031  | Socket Head Cap Screw                       | M6x12       | 6   |
| 13        | PM1200-13   | Diffusion Filter                            |             | 1   |
| 14        | PM1200-14   | Filter Guard (re: PM1200-14A)               |             | 2   |
| 15        | PM1200-15   | Short Chrome Strip (re: PM1200-14A)         |             | 4   |
|           | PM1200-14A  | Filter Guard Assembly (includes #14 and 15) |             | 1   |
| 16        | PM1200-16   | Cabinet                                     |             | 1   |
|           | PM1200-16A  | Cabinet Assembly (includes #3, 4, 9 and 16) |             | 1   |
| 17        | PM1200-17   | Control Switch Assembly                     |             | 1   |
| 17-1      | PM1200-1701 | Circuit Board Assembly                      |             | 1   |
| 17-2      | TS-1540031  | Hex Nut                                     | M5          | 2   |
| 17-3      | PM1200-1703 | Toothed Washer                              | M5          | 2   |
| 17-4      | PM1200-1704 | Switch Plate                                |             | 1   |
| 17-5      | TS-1531012  | Counter Sunk Screw                          | M3x6        | 4   |
| 17-6      | PM1200-1706 | Control Switch Label                        |             | 1   |
| 17-7      | PM1200-1707 | Thermos Switch                              | 5A          | 1   |
| 17-8      | TS-1533042  | Phillips Pan Head Machine Screw             | M5x12       | 1   |
| 17-9      | PM1200-1709 | Wiring Nut                                  | P2          | 1   |
| 17-10     | PM1200-1710 | Strain Relief                               |             | 1   |
| 17-11     | PM1200-1711 | Power Cord                                  | 18AWGx3C    | 1   |
| 18        | PM1200-18   | Tapping Screw                               | M4x6        | 4   |
| 19        | PM1200-19   | Concave Handle                              |             | 2   |
| 20        | PM1200-20   | RF Transmitter Assembly                     |             | 1   |
| 20-1      | PM1200-2001 | RF Transmitter                              |             | 1   |
| 20-2      | PM1200-2002 | Holder                                      |             | 1   |
| 20-3      | PM1200-2003 | Wood Screw                                  | M3x12       | 2   |
| 21        |             | Battery (local purchase)                    | 9 Volt      | 1   |
| 22        | 6823013     | Black Stripe                                |             | 2   |
| 23        | PM1200-23   | Long Chrome Strip                           |             | 2   |
| 24        | PM1200-24   | Blower Assembly                             |             | 1   |
| 24-1      | TS-1503071  | Socket Head Cap Screw                       | M6x30       | 4   |
| 24-2      | TS-1550041  | Flat Washer                                 | M6          | 4   |
| 24-3      | PM1200-2403 | Sleeve                                      |             | 4   |
| 24-4      | PM1200-2404 | Rubber Pad                                  |             | 4   |
| 24-5      | TS-1540031  | Hex Nut                                     | M5          | 4   |
| 24-6      | PM1200-2406 | Motor Bracket                               |             | 1   |
| 24-7      | PM1200-2407 | Motor                                       | 1/4HP, 115V | 1   |
| 24-8      | TS-1534032  | Phillips Pan Head Machine Screw             | M6x8        | 12  |
| 24-9      | PM1200-2409 | Air Guide Plate                             |             | 2   |
| 24-10     | PM1200-2410 | Fan Blade                                   |             | 1   |
| 24-11     | TS-1504021  | Socket Head Cap Screw                       | M8x12       | 1   |
| 24-12     | PM1200-2412 | Fan Housing                                 |             | 1   |
|           | PM1200-HD   | Hardware Kit (includes index # 5, 6 and 7)  |             | 1   |
|           | PM1200-ID   | I.D. Label (not shown)                      |             | 1   |
|           | LM000210    | Warning Label (not shown)                   |             | 1   |

Items with an asterisk (\*) are included in the PM1200-HD Hardware Kit.

**Replacement Filters:**

| Stock No.     | Description                                                  |
|---------------|--------------------------------------------------------------|
| 1791082 ..... | Inner Filter, PM1200, 12"x24"x1"                             |
| 1791083 ..... | Disposable Outer Filter, PM1200, 12"x24"x1"                  |
| 1791084 ..... | Charcoal Diffusion Filter, PM1200 (optional)                 |
| 1791085 ..... | Washable Electrostatic Filter, PM1200, 12"x24"x1" (optional) |

**Electrical Connections**

