

RYOBI
18 Volt Pex Crimp Ring Press Tool
Model No. P661
Repair Sheet

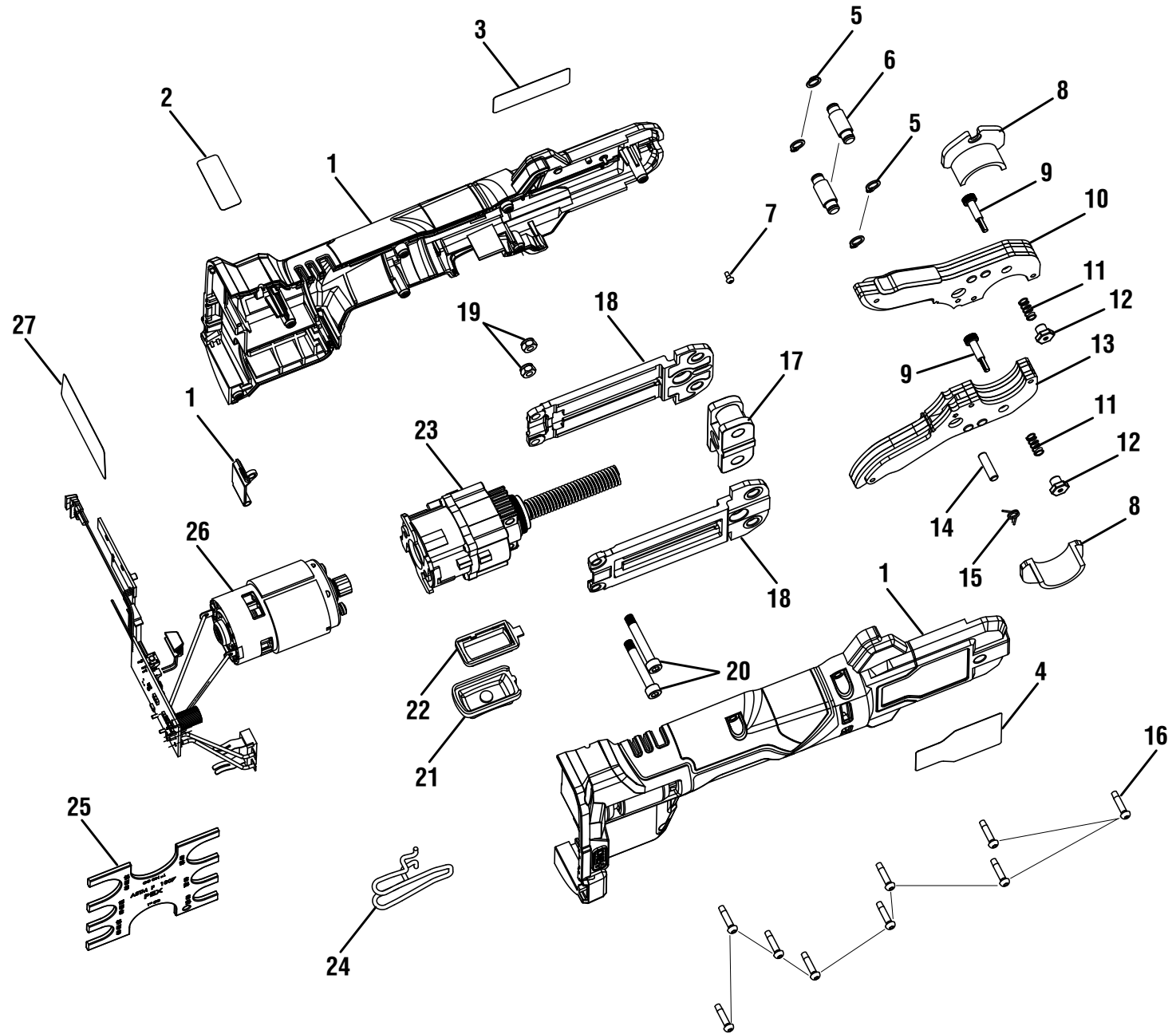
One World Technologies, Inc.

P.O. Box 1288, Anderson, SC 29622

Phone 1-800-525-2579

www.ryobitools.com

RYOBI PEX CRIMP RING PRESS TOOL – MODEL NO. P661

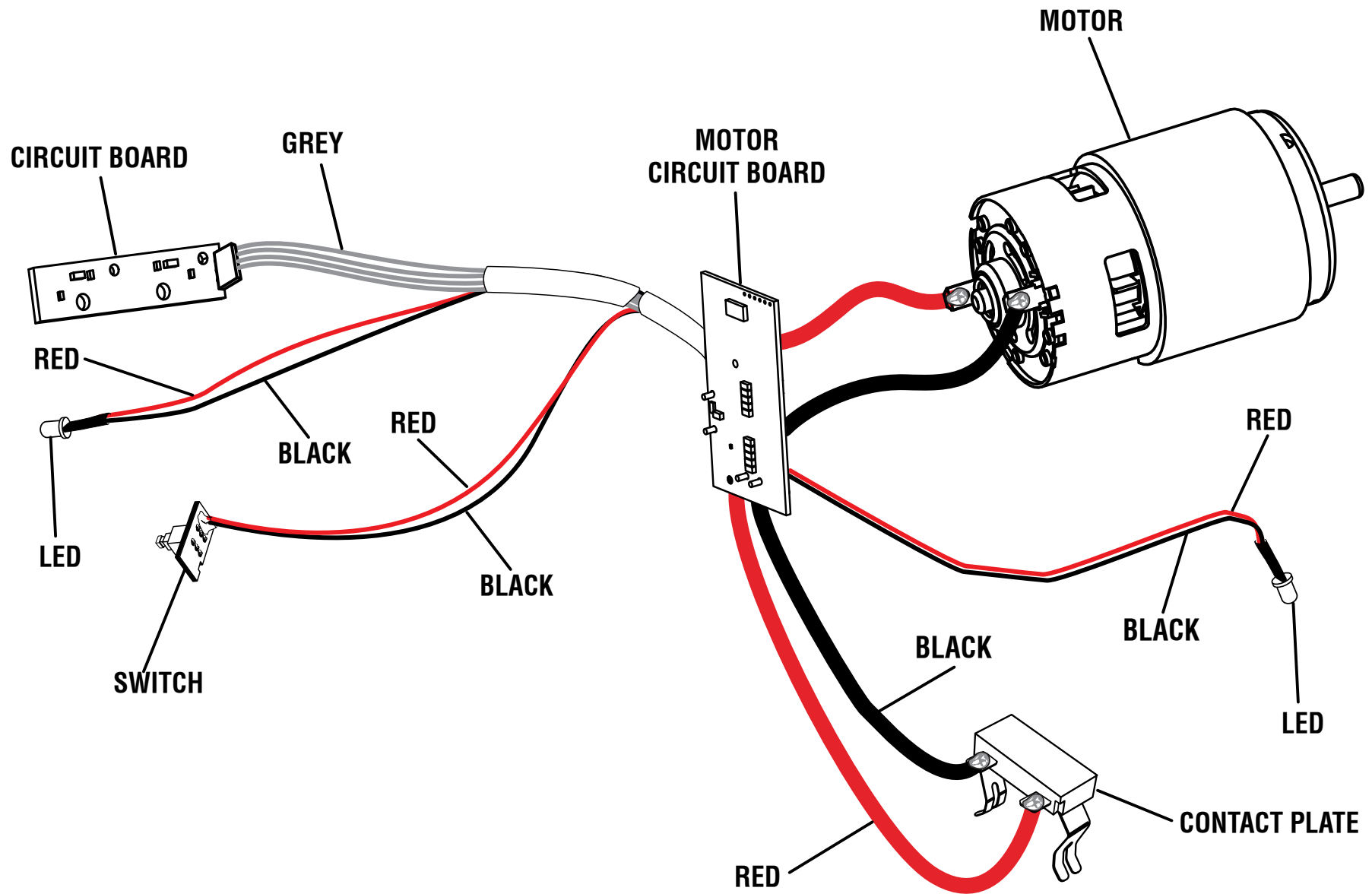


RYOBI PEX CRIMP RING PRESS TOOL – MODEL NO. P661

The model number will be found on a label attached to the motor housing. Always mention the model number in all correspondence regarding your **CRIMP RING PRESS TOOL** or when ordering repair parts.

PARTS LIST

KEY NO.	PART NUMBER	DESCRIPTION	QTY	KEY NO.	PART NUMBER	DESCRIPTION	QTY
1	204800003	Housing Assembly (Inc. Key Nos. 2-4 and 27).....	1	15	697452001	Torsion Spring	1
2	941007094	Indicator Label	1	16	660031017	Screw (M3.5 x 16 mm, T10 Torx Pan Hd.)	9
3	940114178	Logo Label	1	17	204803002	Screw Assembly.....	1
4	941122082	Data Label	1	18	643484001	Jaw Support.....	2
5	690924001	Retaining Ring	4	19	670974003	Lock Nut (M5).....	2
6	673900001	Jaw Pin.....	2	20	662755001	Screw (M5 x 35 mm, Hex. Soc. Hd.).....	2
7	662777001	Screw (M2.3 x 5 mm, T8 Torx Pan Hd.)	2	21	564761001	Switch Button.....	1
8	643490001	Jaw Insert (3/8 in.)	2	22	591858001	Switch Support	1
	643491001	Jaw Insert (1/2 in.)	2	23	206801002	Gearbox Assembly	1
	643492001	Jaw Insert (3/4 in.)	2	24	696626001	Belt Clip.....	1
9	662815001	Screw (M3 x 21.6 mm)	2	25	635957001	Gauge.....	1
10	313731001	Top Jaw Assembly	1	26	206802002	Motor, Switch and Circuit Board Assembly	1
11	697203001	Compression Spring	2	27	941120403	Battery Foot Label.....	1
12	662816001	Jaw Nut (M3)	2		Not Shown		
13	313731002	Bottom Jaw Assembly	1		995000616	Operator's Manual (961152975)	
14	673880001	Hinge Pin.....	1		10-17-18		
					(Rev:03)		



WIRING DIAGRAM