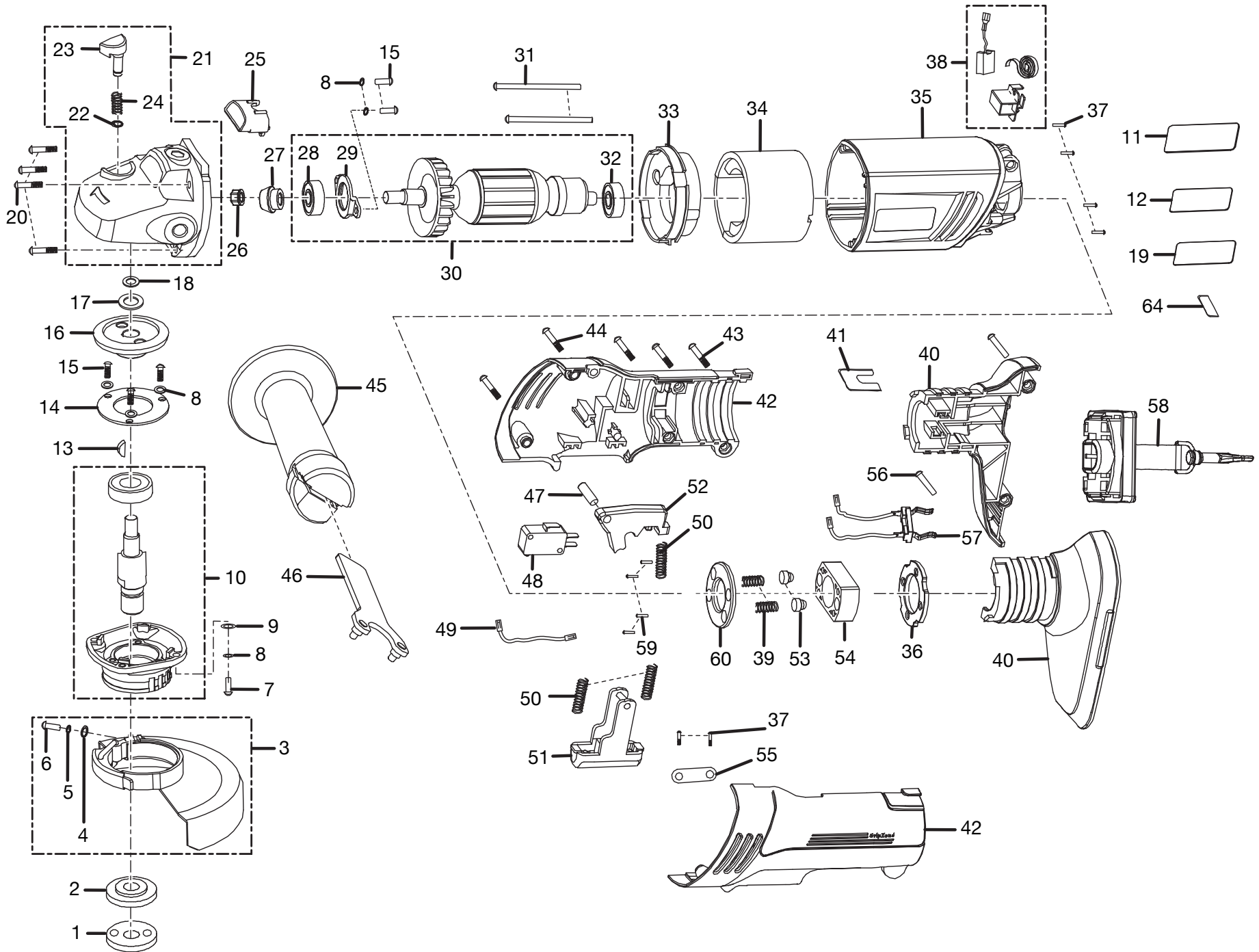


RYOBI 18V ANGLE GRINDER – MODEL NUMBER P420



RYOBI 18V ANGLE GRINDER – MODEL NUMBER P420

The model number will be found on a plate attached to the motor housing. Always mention the model number in all correspondence regarding your **ANGLE GRINDER** or when ordering repair parts.

PARTS LIST

KEY NO.	PART NUMBER	DESCRIPTION	QTY	KEY NO.	PART NUMBER	DESCRIPTION	QTY
1	019012001001	CLAMP NUT	1	33	019012001033	FAN BUFFER	1
2	019012001002	DISK FLANGE.....	1	34	019012001034	FIELD	1
3	019012001072	WHEEL GUARD ASSY. (INC.KEY NOS. 4-6) ...	1	35	019012001035	MOTOR HOUSING.....	1
4	019012001004	WASHER.....	1	36	019012001056	BACK PLATE	1
5	019012001005	WASHER.....	1	37	019012001037	* SCREW (M2.9 X 9.5 mm)	6
6	019012001006	* SCREW (M5 X 16 mm)	1	38	019012001093	BRUSH HOLDER ASSEMBLY	2
7	019012001007	* SCREW (M4 X 14 mm)	4	39	019012001061	SPRING.....	2
8	019012001008	WASHER.....	9	40	019012001095	FOOT ASSEMBLY	1
9	019012001009	WASHER.....	4	41	019012001041	C-RING.....	1
10	019012001090	GEAR CASE ASSEMBLY.....	1	42	019012001094	HANDLE ASSEMBLY	1
11	019012001067	DATA LABEL.....	1	43	019012001043	* SCREW (M4.2 X 13 mm)	1
12	019012001068	LOGO LABEL.....	1	44	019012001044	* SCREW (M4.2 X 32 mm)	2
13	019012001013	WOODRUFF KEY	1	45	019012001045	AUXILLARY HANDLE.....	1
14	019012001014	BEARING PLATE	1	46	019012001046	WRENCH	1
15	019012001015	* SCREW (M4 X 10 mm)	5	47	019012001047	PIN (B5 X 25)	1
16	019012001016	GEAR	1	48	019012001048	SWITCH	1
17	019012001017	WASHER.....	1	49	019012001066	LEAD	1
18	019012001018	C-RING.....	1	50	019012001050	SPRING.....	3
19	019012001069	WARNING LABEL	1	51	019012001097	TRIGGER ASSEMBLY	1
20	019012001020	* SCREW (M3.8 X 70 mm).....	4	52	019012001053	LOCKOFF TRIGGER.....	1
21	019012001091	GEAR HOUSING ASSEMBLY.....	1	53	019012001054	STEEL BALL	2
22	019012001022	RING.....	1	54	019012001055	POSITION HOLDER	1
23	019012001023	SPINDLE BUTTON.....	1	55	019012001062	PRESSURE PLATE	1
24	019012001024	SPRING.....	1	56	019012001057	* SCREW (M4.2 X 16 mm)	4
25	019012001025	VENT COVER	1	57	019012001096	CONTACT PLATE HOLDER ASSEMBLY ...	1
26	019012001026	NUT (M6).....	1	58	200292003	LANYARD	1
27	019012001027	GEAR	1	59	019012001059	* SCREW (M2.9 X 9.5 mm)	4
28	019012001028	BALL BEARING (609Z).....	1	60	019012001060	FRONT PLATE	1
29	019012001029	BEARING PLATE	1		019012001085	GRINDING WHEEL (NOT SHOWN)	1
30	019012001092	ARMATURE ASSEMBLY	1		983000984	OPERATOR'S MANUAL	
31	019012001031	SCREW (M4.2 X 60 mm)	2		(REV:00)		
32	019012001032	BALL BEARING (627Z).....	1		07-31-06		

* STANDARD HARDWARE ITEM – MAY BE PURCHASED LOCALLY