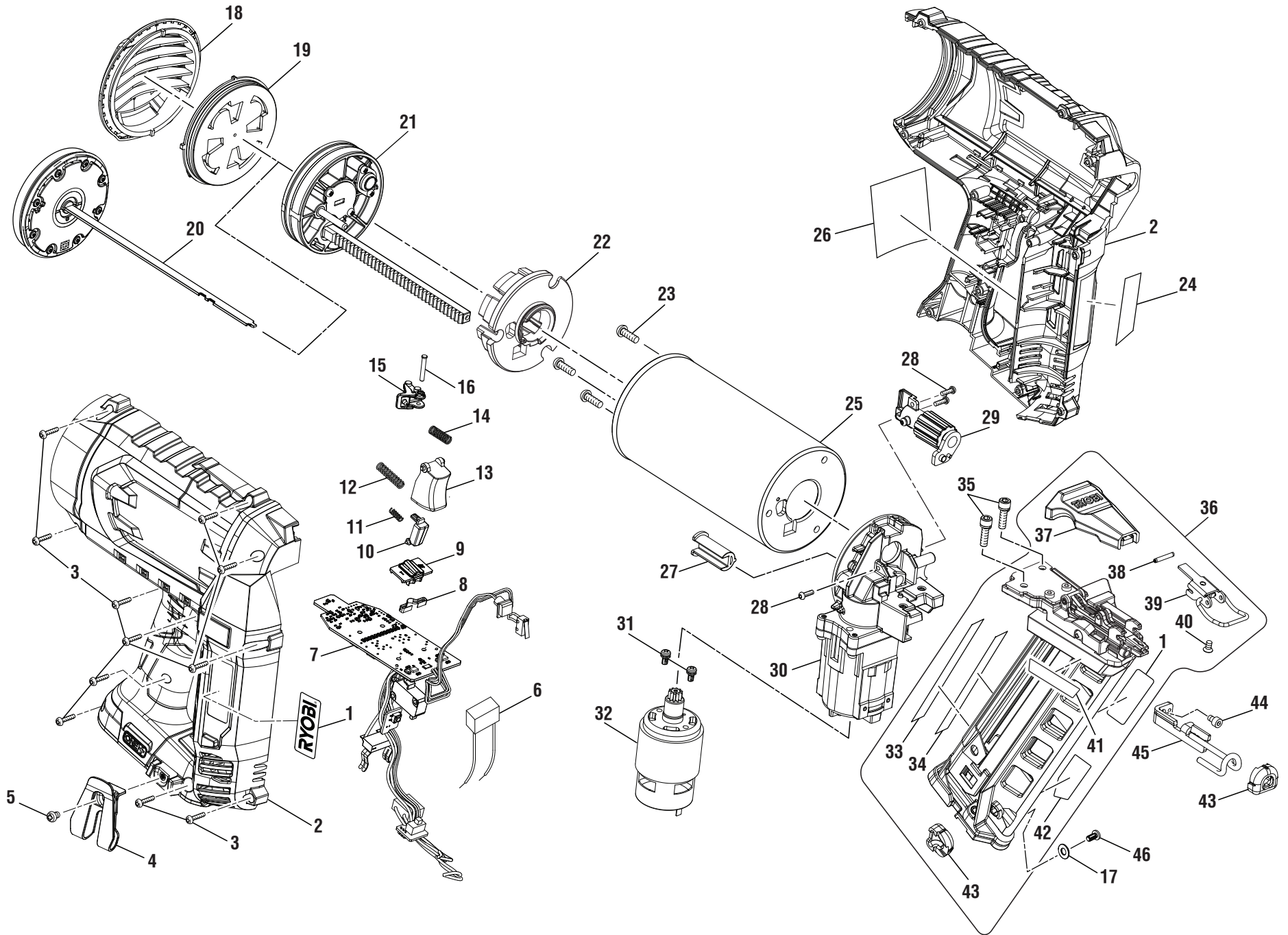


RYOBI
15 GA Finish Nailer
Model No. P330
Repair Sheet

One World Technologies, Inc.

P.O. Box 1288
Anderson, SC 29622
Phone 1-877-205-5714
www.ryobitools.com

RYOBI 15 GA FINISH NAILER – MODEL NO. P330



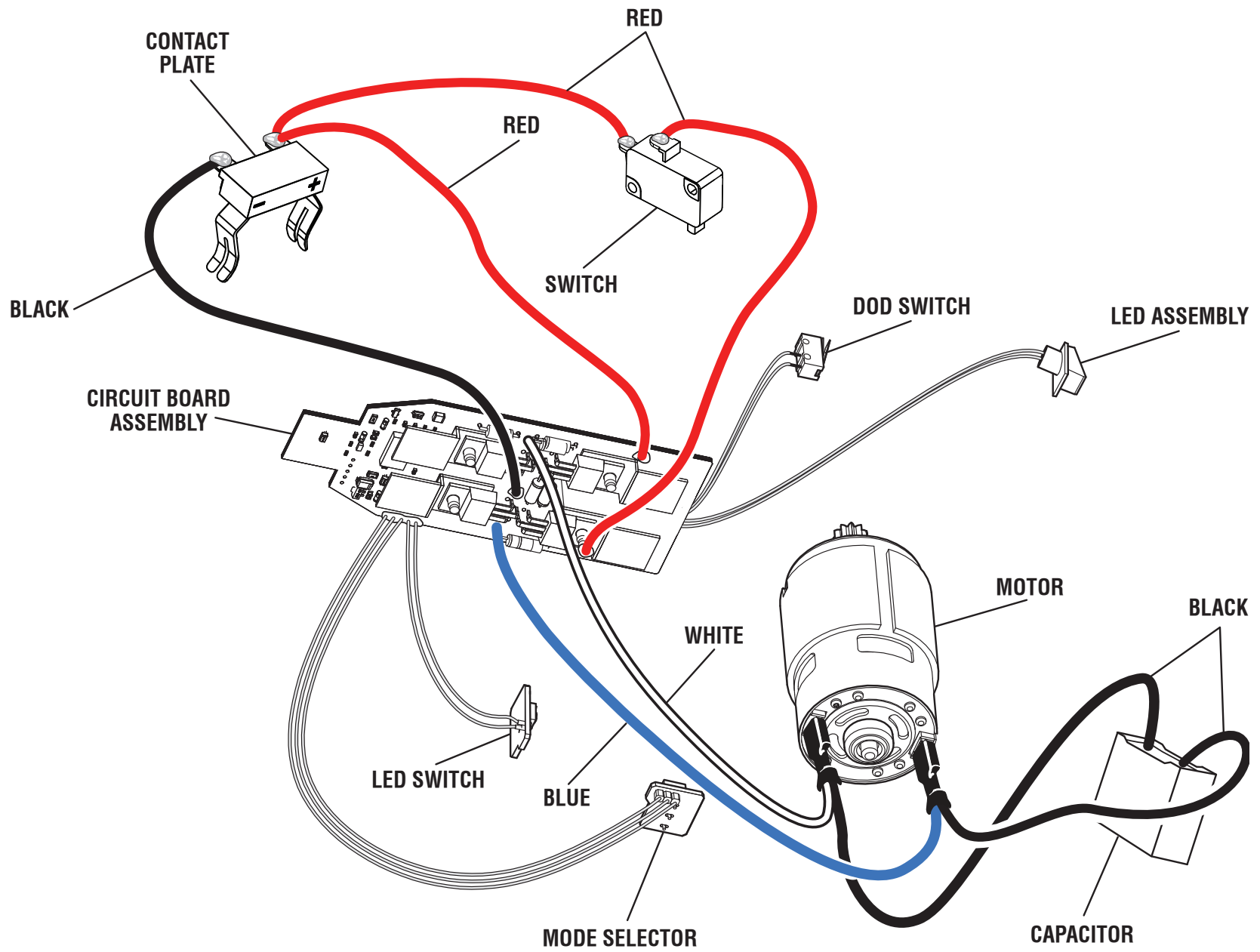
RYOBI 15 GA FINISH NAILER – MODEL NO. P330

The model number will be found on a label attached to the housing. Always mention the model number in all correspondence regarding your **NAILER** or when ordering replacement parts.

PARTS LIST

KEY NO.	PART NUMBER	DESCRIPTION	QTY	KEY NO.	PART NUMBER	DESCRIPTION	QTY
1	940114178	Logo Label	2	28	660380008	Screw (M3 x 10 mm)	3
2	203609001	Housing Assembly	1	29	203719001	Depth Adjustment Assembly	1
3	660031011	Screw (M3.5 x 16 mm)	11	30	203610001	Gear Case Assembly	1
4	635048001	Belt Clip	1	31	T662103001	Screw w/Washer (M4 x 18 mm)	2
5	660212001	Screw (M4 x 6 mm)	1	32	206358001	Motor Assembly	1
6	820362067	Capacitor	1	33	941001157	Flashing LED Label	1
7	270016194	Switch/Circuit Board Assembly (Inc. Key No. 6)	1	34	941121392	Data Label	1
8	634401001	Spring Plate	1	35	662027001	Screw (M5 x 18 mm)	2
9	524689001	Trigger Mode Selector	1	36	203616001	Magazine Assembly (Before CS1815; Incl. Key Nos. 1, 33-34, and 37-43)	1
10	524852001	Trigger (LED)	1		203616003	Magazine Assembly (After CS1816; Incl. Key Nos. 1, 33-34, and 37-43)	1
11	692784001	Compression Spring	1	37	528346001	Latch Pusher	1
12	694199001	Compression Spring (Main Switch)	1	38	673299001	Spiral Pin	1
13	524418001	Trigger	1	39	636224001	Latch	1
14	693992002	Compression Spring (Clutch Frame)	1	40	660213025	Screw (M4 x 7 mm, Flat Hd.)	1
15	203608001	Release Latch Assembly	1	41	941121393	Fastener Specification Label	1
16	673226001	Latch Fix Pin	1	42	941120116	Nail Loading Label	1
17	678050001	Washer (OD11.2 x ID5.2 x 0.8t)	1	43	526859001	No-Mar Tip (Before CS1815)	2
18	527619001	End Cap	1		531334002	No-Mar Tip (After CS1816)	2
19	203718001	Filter/Shutter Assembly	1	44	660169068	Screw (M4 x 6 mm, Hex Hd.)	1
20	206357001	Driver Piston Assembly (Before CS1815)	1	45	636223001	Contact Element (Before CS1815)	1
	206357002	Driver Piston Assembly (After CS1816)	1	46	636223003	Contact Element (After CS1816)	1
21	203720001	Elevator Piston Assembly	1		Not Shown:		
22	563585001	Bumper	1		203611001	Seal Kit (Not Included)	
23	660385016	Screw (M5 x 15 mm, T25)	3		680720001	Nails (2 in., 500 Pieces Per Box)	
24	941120115	No Slide Warning Label	1		991000192	Operator's Manual (961152400)	
25	203607001	Cylinder Assembly w/Label	1		6-4-18		
26	941001142	POP Label	1		(Rev:02)		
27	563236001	Rack Guide	1				

RYOBI 15 GA FINISH NAILER – MODEL NO. P330



WIRING DIAGRAM