

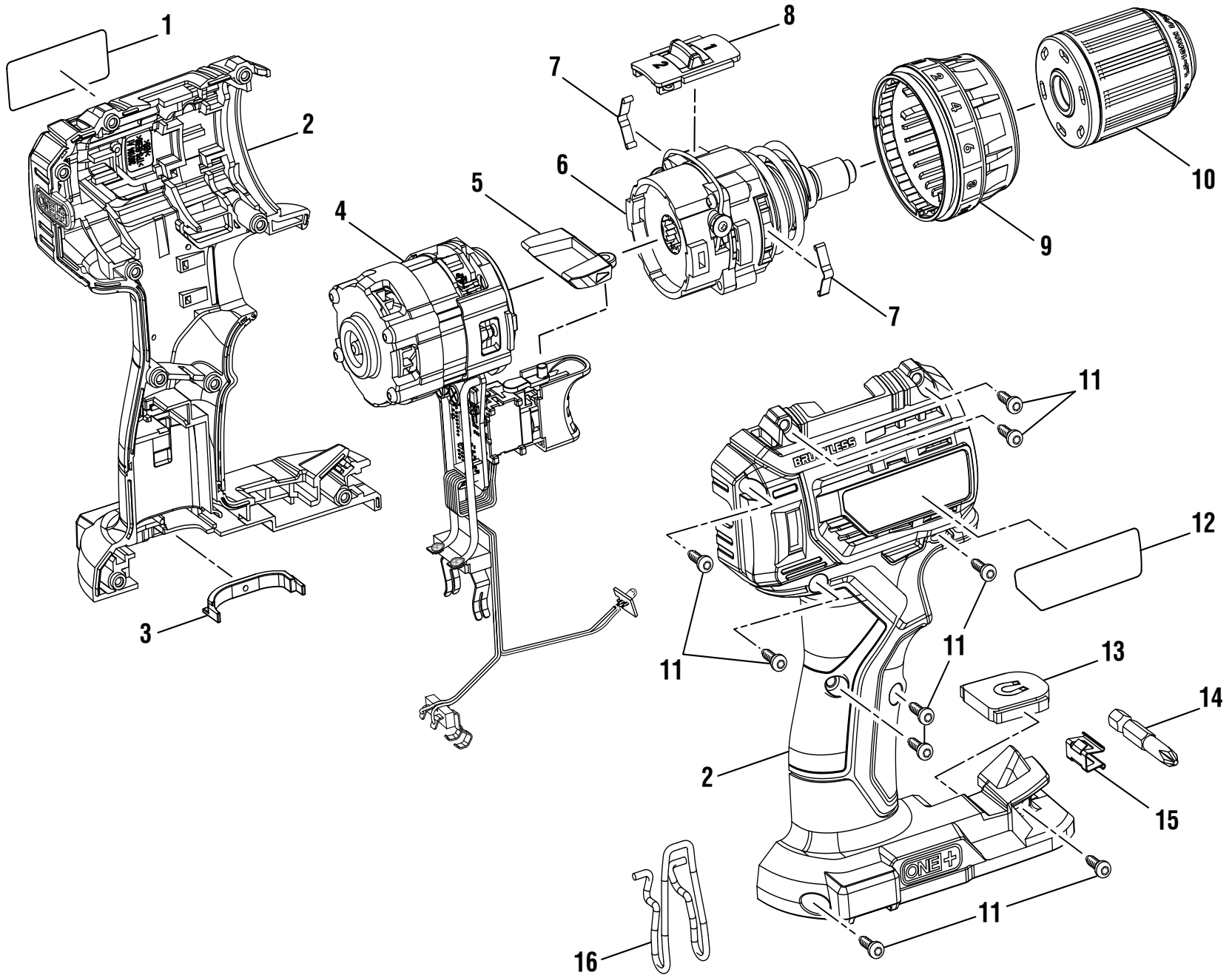
**RYOBI
18 VOLT BRUSHLESS DRILL/DRIVER
MODEL NUMBER P252
REPAIR SHEET**

ONE WORLD TECHNOLOGIES, INC.

1428 Pearman Dairy Road, Anderson, SC 29625 • Phone 1-800-525-2579

www.ryobitools.com

RYOBI 18 VOLT BRUSHLESS DRILL/DRIVER - MODEL NUMBER P252



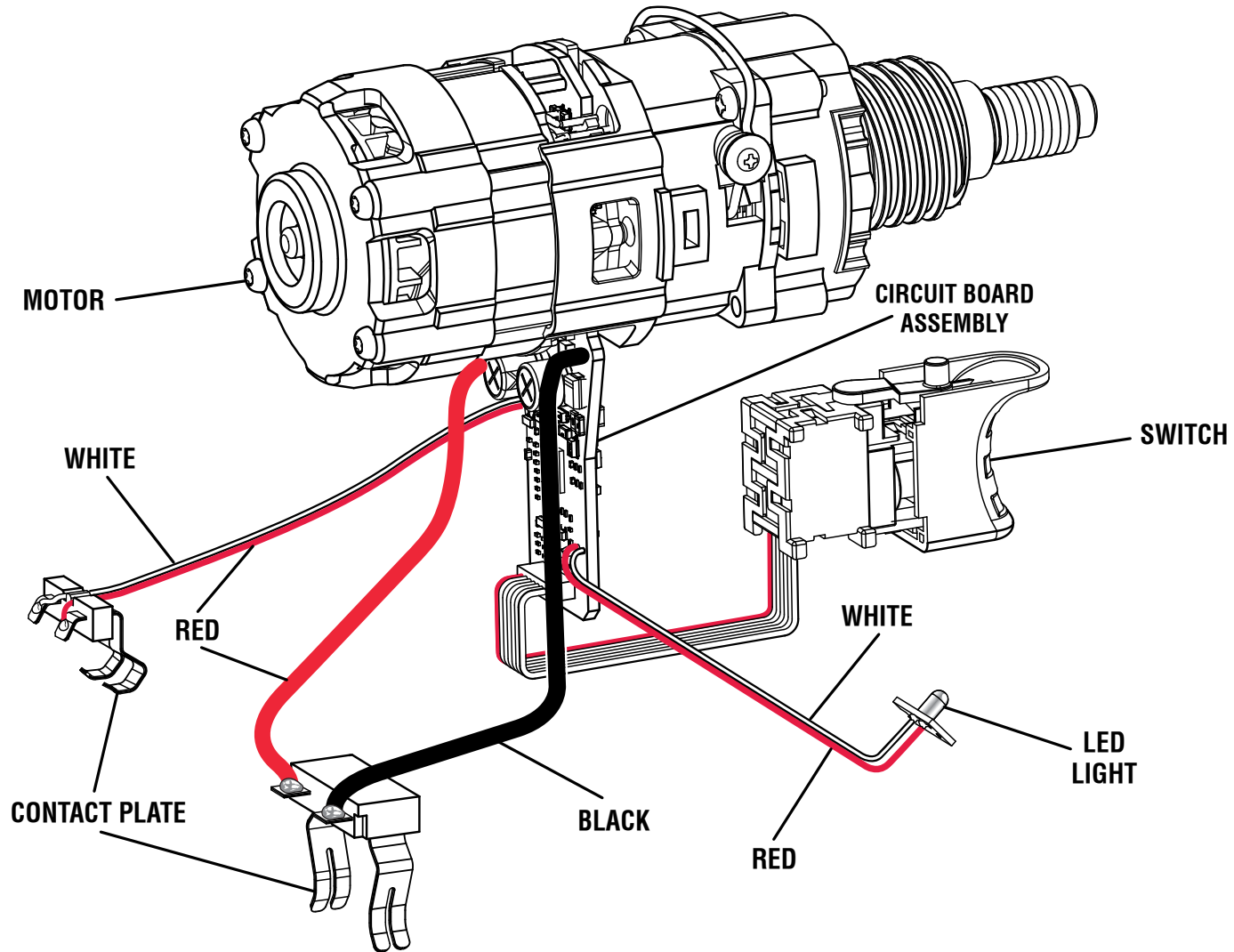
RYOBI 18 VOLT BRUSHLESS DRILL/DRIVER – MODEL NUMBER P252

The model number will be found on data label attached to the motor housing. Always mention the model number in all correspondence regarding your **DRILL/DRIVER** or when ordering repair parts.

PARTS LIST

| KEY NO. | PART NUMBER | DESCRIPTION | QTY | KEY NO. | PART NUMBER | DESCRIPTION | QTY |
|---------|-------------|--|-----|--|-------------|---|-----|
| 1 | 941655036 | Logo Label | 1 | 10 | 673743001 | Chuck..... | 1 |
| 2 | 204406005 | Housing Assembly (Incl. Key Nos. 1 and 12) | 1 | 11 | 660031018 | Screw (M3.5 x 14 mm, Soc. Pan Hd.)..... | 9 |
| 3 | 534471001 | D-Tech Wire Cover | 1 | 12 | 941121903 | Data Label | 1 |
| 4 | 206736001 | Motor, Circuit Board and Switch Assembly | 1 | 13 | 303001052 | Magnet | 1 |
| 5 | 533837001 | Direction Of Rotation Selector | 1 | 14 | 670802034 | Bit (#2 Phillips x 50 mm)..... | 1 |
| 6 | 206737001 | Gear Box Assembly | 1 | 15 | 630206007 | Bit Clip..... | 1 |
| 7 | 636616001 | Spring Plate..... | 2 | 16 | 696626001 | Belt Hook | 1 |
| 8 | 204407003 | Two-Speed Gear Selector..... | 1 | Not Shown: 995000523 Operator's Manual (961152780) 2-23-18 (Rev:01) | | | |
| 9 | 360187001 | Clutch Cap Assembly (Torque Adjustment Ring) ... | 1 | | | | |

RYOBI 18 VOLT BRUSHLESS DRILL/DRIVER – MODEL NUMBER P252



WIRING DIAGRAM