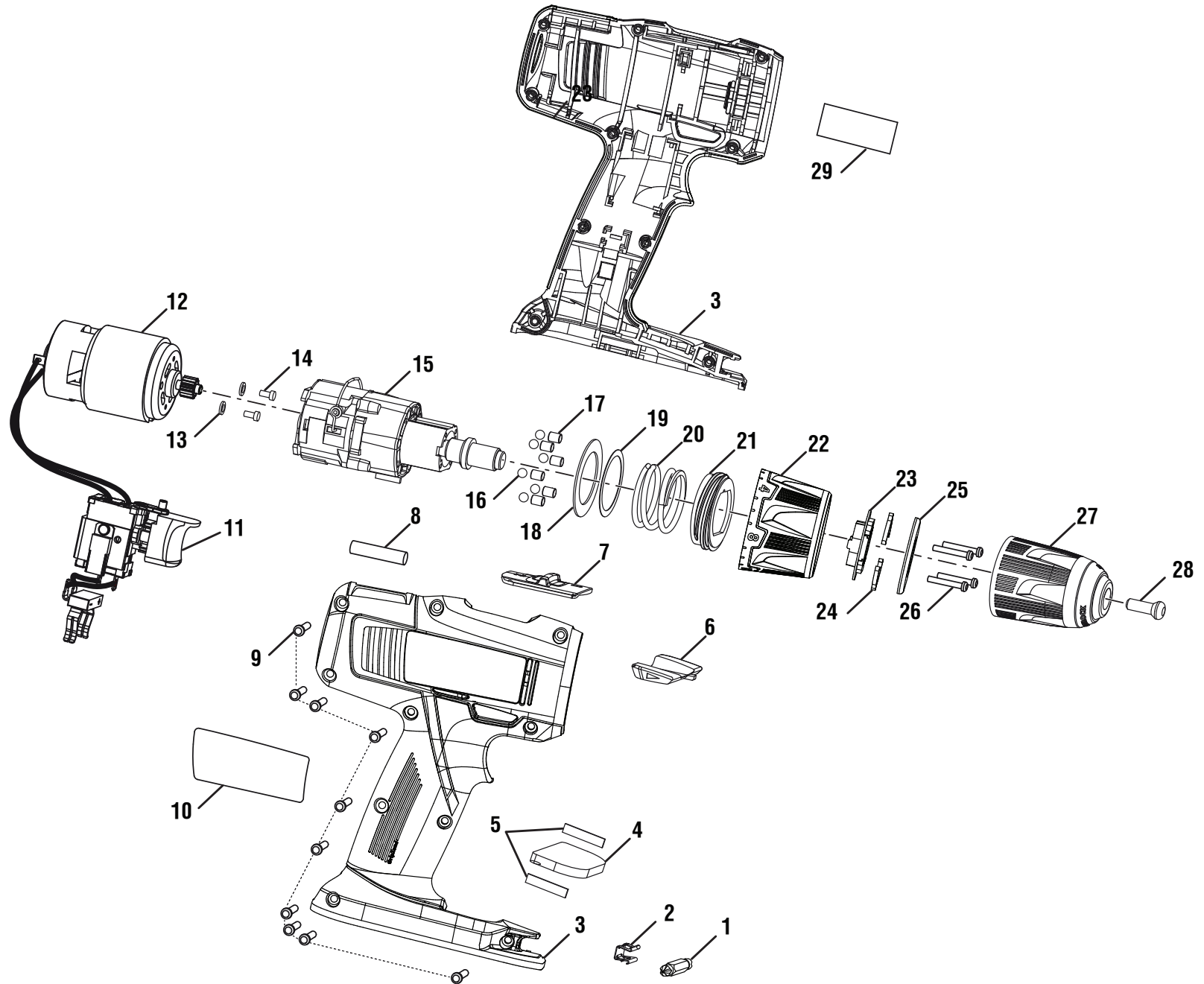


RYOBI 18 VOLT, 1/2 in. 2-SPEED DRILL DRIVER - MODEL NUMBER P204



## RYOBI 18 VOLT, 1/2 in. 2-SPEED DRILL DRIVER – MODEL NUMBER P204

The model number will be found on a label attached to the motor housing. Always mention the model number in all correspondence regarding your **18 VOLT, 1/2 in. 2-SPEED DRILL DRIVER** or when ordering parts.

### PARTS LIST

KEY NO.	PART NUMBER	DESCRIPTION	QTY	KEY NO.	PART NUMBER	DESCRIPTION	QTY
1	6782045	Double Bit (#2 Phillips Head/#6 Slotted x 50 mm).....	1	19	690011013	Washer (OD 39.5 x ID 30.5 x 0.15t).....	1
2	630206007	Bit Clip (0.4 mm).....	1		690011012	Washer (OD 39.5 x ID 30.5 x 0.3t).....	1
3	201586001	Housing Assembly .....	1		671532002	Washer (OD 39.5 x ID 29.5 x 0.2t).....	1
4	300823002	Magnet (56 x 30 x 5 mm) .....	1		690011007	Washer (OD 40.5 x ID 30.5 x 0.1t).....	1
5	560444002	Foam Rubber (23 x 4 x 2 mm).....	2	20	692236001	Torque Control Spring (OD 35.5 x ID 29.7 x 19 mm) .....	1
6	516319002	Forward/Reverse Selector.....	1	21	511333001	Sleeve.....	1
7	516318004	Gear Change Knob .....	1	22	341918001	Torque Adjustment Ring.....	1
8	3000907	Level Assembly .....	1	23	519916001	Spring Holder .....	1
9	660206014	Screw (M3.5 x 14 mm) .....	10	24	6399201	Spring Plate (0.4 mm).....	2
10	940976607	Data Label .....	1	25	6359801	Mounting Ring (Torque Adjustment Ring) .....	1
11	270001440	Switch Assembly.....	1	26	660203067	Screw (M3 x 23 mm) .....	4
12	230079021	Motor Assembly .....	1	27	690033084	Chuck .....	1
13	670030004	Spring Washer (OD 7.2 x ID 4.1 x 1 mm) .....	2	28	6613402	Screw (M6 x 27 mm) .....	1
14	6621205	Screw (M4 x 8 mm) .....	2	29	940114155	Logo Label .....	1
15	220016147	Gear Box Assembly.....	1		<b>Not Shown:</b>		
16	670219005	Ball (Ø5 mm).....	6		987000736	Operator's Manual (961075091)	
17	680338023	Pin (Ø5 x L6.4 mm).....	6		3-4-13		
18	6710501	Clutch Washer (OD 39.3 x ID 30.5 x 0.8t).....	1		(REV:04)		