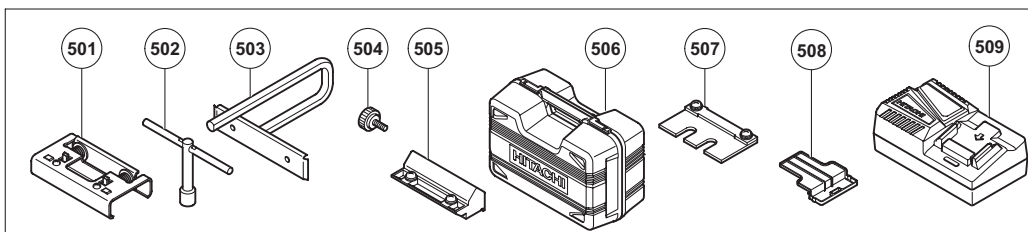
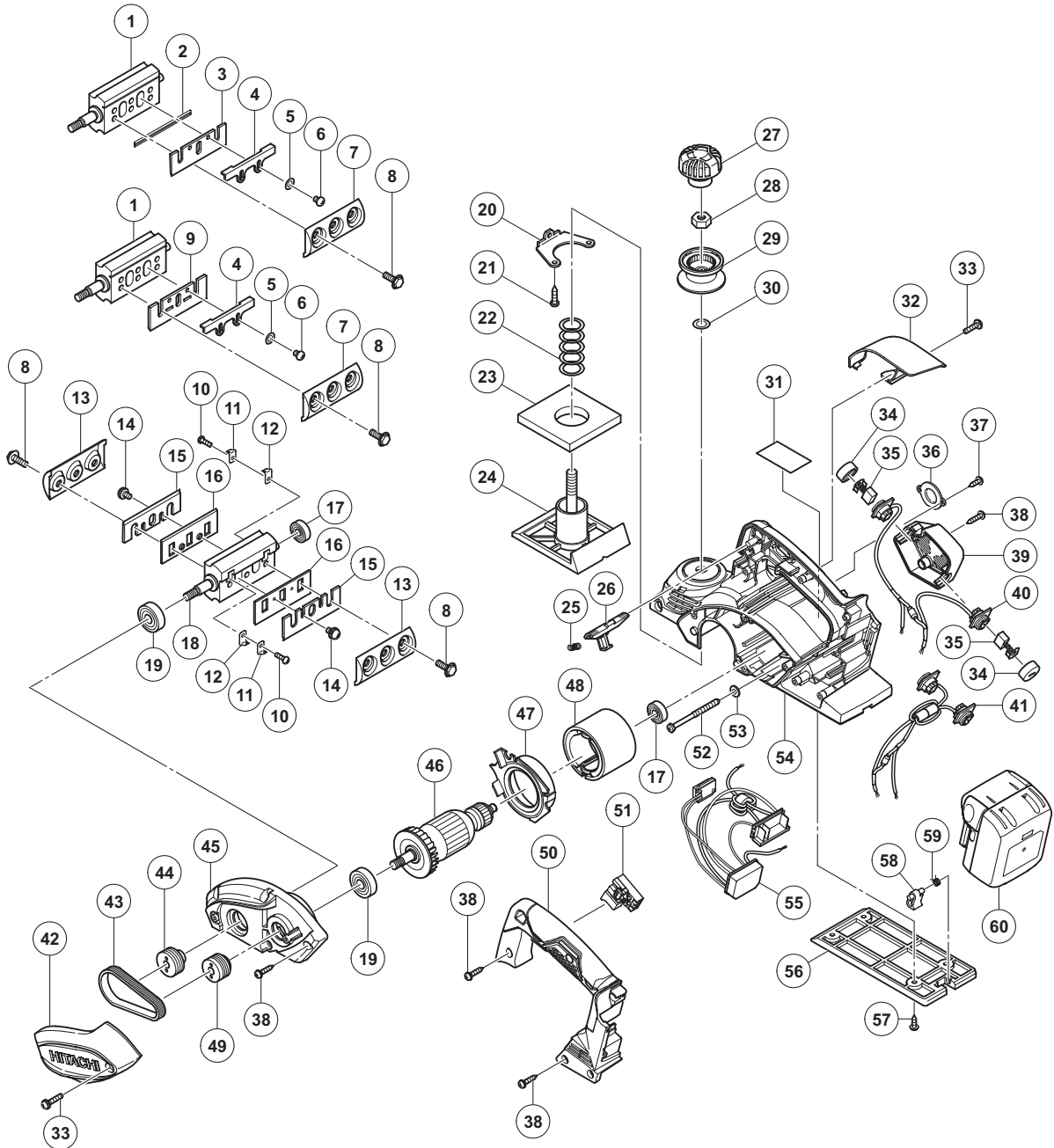


ELECTRIC TOOL PARTS LIST

CORDLESS PLANER
Model P 18DSL

2014·1·30
(E1)



PARTS

P 14DSL

| ITEM NO. | CODE NO. | DESCRIPTION | NO. USED | REMARKS |
|----------|----------|--|----------|---|
| * 1 | 334480 | CUTTER BLOCK ASS'Y (W/B.B) | 1 | INCLUD.17,19 EXCEPT FOR IND |
| * 2 | 879418 | PLANER BLADES (1 PAIR) | 2 | FOR DOUBLE EDGE BLADE TYPE |
| * 3 | 334478 | SET PLATE (B) (1 PAIR) | 2 | FOR DOUBLE EDGE BLADE TYPE |
| * 4 | 314754 | SET PLATE (A) | 2 | EXCEPT FOR IND |
| * 5 | 949423 | WASHER M4 (10 PCS.) | 4 | EXCEPT FOR IND |
| * 6 | 949213 | MACHINE SCREW M4 X 5 (10 PCS.) | 4 | EXCEPT FOR IND |
| * 7 | 316398 | BLADE HOLDER (1 PAIR) | 2 | EXCEPT FOR IND |
| 8 | 336574 | BOLT M6 | 6 | |
| * 9 | 314746 | PLANER BLADES 82MM (1 PAIR) | 2 | EXCEPT FOR DOUBLE EDGE BLADE TYPE |
| * 10 | 949216 | MACHINE SCREW M4 X 10 (10 PCS.) | 4 | EXCEPT FOR DOUBLE EDGE BLADE TYPE FOR IND |
| * 11 | 958731Z | HOLDER SPRING (B) | 4 | EXCEPT FOR DOUBLE EDGE BLADE TYPE FOR IND |
| * 12 | 958732Z | GUARD PLATE (A) | 4 | EXCEPT FOR DOUBLE EDGE BLADE TYPE FOR IND |
| * 13 | 958734Z | BLADE HOLDER (1 PAIR) | 2 | EXCEPT FOR DOUBLE EDGE BLADE TYPE FOR IND |
| * 14 | 976815 | MACHINE SCREW (W/WASHERS) M4 X 8 | 4 | EXCEPT FOR DOUBLE EDGE BLADE TYPE FOR IND |
| * 15 | 958728 | PLANER BLADES 82MM (1 PAIR) | 2 | EXCEPT FOR DOUBLE EDGE BLADE TYPE FOR IND |
| * 16 | 958733Z | BACK METAL | 2 | EXCEPT FOR DOUBLE EDGE BLADE TYPE FOR IND |
| 17 | 608VVM | BALL BEARING 608VVC2PS2L | 2 | |
| * 18 | 334481 | CUTTER BLOCK ASS'Y (W/B.B) | 1 | INCLUD.10-12,17,19 EXCEPT FOR DOUBLE EDGE BLADE TYPE FOR IND |
| 19 | 6200VV | BALL BEARING 6200VVCMP2L | 2 | |
| 20 | 958945 | SCREW PLATE | 1 | |
| 21 | 954004 | TAPPING SCREW D4 X 16 | 1 | |
| 22 | 958709 | SPRING | 1 | |
| 23 | 958708 | RUBBER PACKING | 1 | |
| 24 | 334739 | FRONT BASE | 1 | |
| 25 | 301631 | SPRING (F) | 1 | |
| 26 | 336481 | KNOB | 1 | |
| 27 | 334494 | KNOB (A) | 1 | |
| 28 | 334497 | LOCK NUT M10 | 1 | |
| 29 | 336486 | KNOB (B) | 1 | |
| 30 | 301659 | WASHER (B) | 1 | |
| 31 | | NAME PLATE | 1 | |
| 32 | 334501 | TIP COVER | 1 | |
| 33 | 333163 | MACHINE SCREW (BLACK) M4 X 16 | 3 | |
| 34 | 336490 | BRUSH CAP | 2 | |
| 35 | 999017 | CARBON BRUSH (1 PAIR) | | |
| 36 | 334492 | BEARING COVER | 1 | |
| 37 | 309470 | TAPPING SCREW (W/FLANGE) D4 X 12 (BLACK) | 2 | |
| 38 | 301653 | TAPPING SCREW (W/FLANGE) D4 X 20 (BLACK) | 11 | |
| 39 | 336485 | TAIL COVER | 1 | |
| 40 | 336576 | BRUSH HOLDER | 1 | |
| * 41 | 336577 | BRUSH HOLDER (W/FERRITE CORE) | 1 | FOR EUROPE,TUR,KOR |
| 42 | 336575 | BELT COVER | 1 | |
| 43 | 958718 | BELT | 1 | |
| 44 | 336489 | PULLEY (B) | 1 | |
| 45 | 334486 | END BRACKET | 1 | |
| 46 | 360968 | ARMATURE DC14.4V | 1 | |
| 47 | 334493 | FAN GUIDE | 1 | |
| 48 | 319846 | MAGNET | 1 | |
| 49 | 336488 | PULLEY (A) | 1 | |

STANDARD ACCESSORIES

P 14DSL

| ITEM NO. | CODE NO. | DESCRIPTION | NO. USED | REMARKS | | |
|----------|----------|-------------|---------------------------|---------|-----------------------------------|--|
| * | 501 | 334693 | SET GAUGE | 1 | FOR IND | |
| | 502 | 940543 | BOX WRENCH 10MM | 1 | | |
| | 503 | 958842Z | GUIDE | 1 | | |
| | 504 | 940650 | STOPPER SCREW M5 X 14 | 1 | | |
| * | 505 | 314767 | BLADE SHARPENING ASS'Y | 1 | EXCEPT FOR DOUBLE EDGE BLADE TYPE | |
| | 506 | 336491 | CASE | 1 | | |
| * | 507 | 316419 | SET GAUGE | 1 | EXCEPT FOR IND | |
| | 508 | 329897 | BATTERY COVER | 2 | | |
| | 509 | | CHARGER (MODEL UC 18YFSL) | 1 | | |
| | | | | | | |
| | | | | | | |
| | | | | | | |
| | | | | | | |
| | | | | | | |
| | | | | | | |
| | | | | | | |
| | | | | | | |
| | | | | | | |
| | | | | | | |
| | | | | | | |
| | | | | | | |
| | | | | | | |
| | | | | | | |
| | | | | | | |
| | | | | | | |
| | | | | | | |
| | | | | | | |

OPTIONAL ACCESSORIES

| ITEM NO. | CODE NO. | DESCRIPTION | NO. USED | REMARKS | | |
|----------|----------|-------------|------------------|---------|--|--|
| | 601 | 334502 | DUST ADAPTER | 1 | | |
| | 602 | 334503 | ELBOW | 1 | | |
| | 603 | 322955 | DUST BAG (BLACK) | 1 | | |
| | | | | | | |
| | | | | | | |
| | | | | | | |
| | | | | | | |
| | | | | | | |
| | | | | | | |
| | | | | | | |
| | | | | | | |
| | | | | | | |
| | | | | | | |
| | | | | | | |
| | | | | | | |
| | | | | | | |
| | | | | | | |
| | | | | | | |
| | | | | | | |
| | | | | | | |
| | | | | | | |
| | | | | | | |
| | | | | | | |
| | | | | | | |
| | | | | | | |
| | | | | | | |
| | | | | | | |
| | | | | | | |
| | | | | | | |
| | | | | | | |