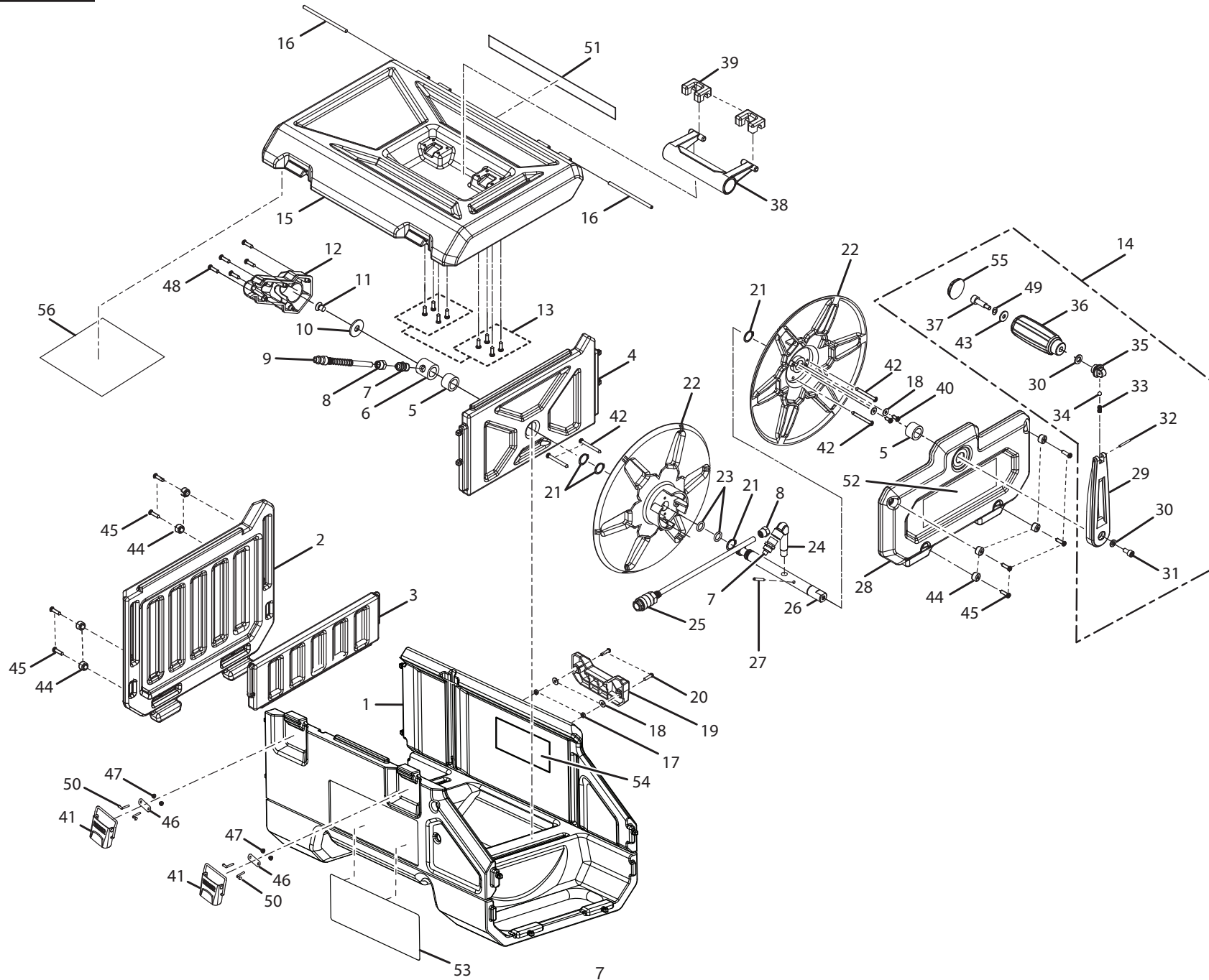


▲ **WARNING:** The assembly shown represents an important part of the Double Insulated System. To avoid the possibility of alteration or damage to the System, service should be performed by your nearest authorized service center.

▲ **AVERTISSEMENT :** L'ensemble illustré représente une partie importante du système à isolation double. Afin d'éviter la possibilité de modification ou de dommage au système, la réparation ne doit être effectuée que par votre centre de réparation centre commercial autorisé.

▲ **ADVERTENCIA:** El conjunto que se ilustra representa una parte importante del Sistema de Aislamiento Doble. Para evitar la posibilidad de alteración o daño del sistema, la reparación debe ser efectuada en su centro de servicio autorizado.

KEY	P/N	DESCRIPTION	QTY	KEY	P/N	DESCRIPTION	QTY	KEY	P/N	DESCRIPTION	QTY
1	079027007001	Display Panel	1	42	079027007040	Screw (M4.2 x 16 mm Torx Hd.)	6	83	079027007078	Front Shroud	1
2	079027007002	Screw (M4 x 12 mm Torx Hd.)	4	43	079027007041	Hex Bolt (M6 x 70 mm)	3	84	079027007079	Air Filter	1
3	079027007003	Quick Connect	2	44	079027007042	Washer (M6)	12	85	079027007080	Screw (M3.5 x 16 mm)	2
4	079027007004	Outlet Bracket	1	45	079027007043	Lock Washer (M6)	12	86	079027007911	Data Label	1
5	079027007005	Screw (M10 x 12 mm Hex Hd.)	1	46	079027007044	End Cap	1	87	079027007907	Tank Drain Label	1
6	079027007006	Pressure Gauge	2	47	079027007915	Auto/Off Label	1	88	079027007081	Rear Shroud	1
7	079027007007	Tubing	1	48	079027007045	Hex Screw (M6 x 20 mm)	4	89	079027007082	Screw (M4.2 x 32 mm)	2
8	079027007008	Nut	2	49	079027007046	Ball Bearing (6203-2Z/HT)	2	90	079027007083	Screw (M4 x 10 mm Torx Hd.)	4
9	079027007009	Pipe Connector	2	50	079027007047	Field	1	91	079027007906	Warning Hang Tag (French & Spanish)	1
10	079027007010	Regulator Assembly	1	51	079027007048	Armature	1	92	079027007084	Washer (M4)	14
11	079027007011	End Plug	1	52	079027007049	Outlet Pipe Assembly	1	93	079027007085	Power Cord	1
12	079027007012	Screw (M8 x 30 mm Hex Hd.)	2	53	079027007050	Elbow Connector	1	94	079027007086	Hex Nut (M4)	2
13	079027007013	Rubber Foot Pad	2	54	079027007051	Crankcase	1	95	079027007087	Screw (M4 x 4.8 mm)	2
14	079027007014	Hex Nut (M8)	2	56	079027007052	Screw (M6 Hex Hd.)	5	96	079027007088	Washer (M5)	6
15	079027007015	Drain Valve	1	57	079027007053	Crankshaft w/Eccentric	1	97	079027007089	Washer (M8)	2
16	079027007016	Frame Assembly Tank	1	58	079027007054	Ball Bearing (6202-2Z)	1	98	079027007091	Filter Element	1
17	079027007017	Relief Valve (PSI)	1	59	079027007055	Piston Rod	1	99	079027007092	Supporting Plate	1
18	079027007018	Pressure Switch	1	60	079027007056	Hex Screw (M5 x 25 mm)	1	100	079027007093	Pressure Switch Plug	1
19	079027007155	Washer	2	61	079027007057	Motor Fan	1	101	079027007157	Lead Wire	1
20	079027007019	Safety Valve	1	62	079027007058	Piston Ring	1	102	079027007031	Seal	2
21	079027007020	Axle (D10 x 80 mm)	2	63	079027007059	Piston Clamping Plate	1	103	079027007901	Mobil Air Label (Shroud)	1
22	079027007021	Wheel Assembly	2	64	079027007060	Screw (M5 x 14 mm)	1	104	079027007902	Logo Label (Tank)	1
23	079027007022	Washer (M10)	2	65	079027007061	Cylinder Sleeve	1	105	079027007904	Hot Surface Label	1
24	079027007023	Hitch Pin	2	66	079027007062	O Ring (D53 x 3.55 mm)	1	106	079027007156	Overload Protector	1
25	079027007024	Screw (M5 x 10 mm Torx Hd.)	6	67	079027007063	Valve Plate	1	107	079027007097	Gasket Kit (Inc. Key Nos. 66 & 68)	1
27	079027007025	Cable Clamp	1	68	079027007064	Seal Ring	1	108	079027007098	Piston Kit (Inc. Key Nos. 59-60, 62-64 & 74-75)	1
28	079027007026	Screw (M4 x 10 mm)	2	69	079027007065	Valve	2	109	079027007099	Pump Rebuild Kit (Inc. Key Nos. 59-60, 62-69 & 74-75)	1
29	079027007027	Motor Cable	1	70	079027007066	Cylinder Head	1	110	079027007100	Air Filter Kit (Inc. Key Nos. 84-85 & 98-99)	1
30	079027007028	Ferrule Nut	1	71	079027007067	Bolt (M6 x 25 mm Hex Hd.)	2	111	079027007090	Control Gauge Panel Assembly (Inc. Key Nos. 1-11, 82 & 92)	1
31	079027007029	Ferrule Sleeve	1	73	079027007068	Bolt (M5 x 20 mm Hex Hd.)	1	112	079027007160	Hex Nut (M6)	4
32	079027007030	Check Valve	1	74	079027007069	Lock Washer (M5)	2	987000418	Operator's Manual (079027007911) ...	1	
34	079027007032	Screw (M3 x 6 mm)	2	75	079027007070	Washer (M5)	2	987000409	Flyer (R6903CFA)	1	
35	079027007096	Plunger Assembly	2	76	079027007071	Capacitor Lower Bracket	1	10-08-08	(Rev:02)		
36	079027007095	Pump Assembly	1	77	079027007072	Capacitor	1				
37	079027007905	Warning Label (English)	1	78	079027007073	Capacitor Upper Bracket	1				
38	079027007036	Cord Wrap	2	79	079027007074	Lock Washer (M4)	2				
39	079027007037	Insert Sleeve	2	80	079027007075	Screw (M4 x 4.8 mm)	2				
40	079027007038	Handle	1	81	079027007076	Screw (M6 x 16 mm Hex Hd.)	3				
41	079027007039	Handle Grip	1	82	079027007910	Regulator Knob Label	1				



KEY	P/N	DESCRIPTION	QTY	KEY	P/N	DESCRIPTION	QTY	KEY	P/N	DESCRIPTION	QTY
1	079027007101	Tool Box Lower Body.....	1	20	079027007120	Screw M4 x 16 mm Torx Hd.).....	2	40	079027007141	Screw (M4.2 x 13 mm).....	2
2	079027007102	Left End Wall.....	1	21	079027007121	C Clip.....	4	41	079027007142	Metal Latch.....	2
3	079027007103	Left Sliding Wall.....	1	22	079027007122	Hose Reel.....	2	42	079027007143	Screw (M4 x 38 mm).....	4
4	079027007104	Right Sliding Wall.....	1	23	079027007123	O Ring.....	2	43	079027007144	Washer (M8).....	1
5	079027007105	Sliding Bearing.....	2	24	079027007124	Connector.....	1	44	079027007145	Sleeve.....	8
6	079027007106	Pipe Fitting.....	1	25	079027007125	Main Hose Assembly.....	1	45	079027007146	Screw (M4.2 x 16 mm).....	8
7	079027007107	Connector.....	2	26	079027007126	Hose Reel Shaft.....	1	46	079027007147	Connecting Plate.....	2
8	079027007108	Nut.....	2	27	079027007127	Spring Pin (D4 x 25 mm).....	1	47	079027007148	Nut (M3).....	4
9	079027007109	Air Hose Assembly.....	1	28	079027007128	Right End Wall.....	1	48	079027007149	Screw (M3.5 x 16 mm).....	5
10	079027007110	Washer.....	1	29	079027007130	Crank Arm.....	1	49	079027007150	Spring (M16).....	1
11	079027007111	Screw (M8 x 12 mm).....	1	30	079027007131	Washer (M6).....	2	50	079027007158	Latch Pin.....	4
12	079027007112	Air Hose Cover.....	1	31	079027007132	Hex Screw (M6 x 12 mm).....	1	51	079027007159	Weather Stripping.....	1
13	079027007113	Screw (M4.2 x 16 mm).....	8	32	079027007133	Spring Pin (D3 x 25 mm).....	1	52	079027007903	Logo Label.....	1
14	079027007154	Handle Assembly (Incl. Key Nos. 29-37, 43, 49 and 55).....	1	33	079027007134	Spring.....	1	53	079027007900	Mobil Air Label.....	1
15	079027007115	Tool Box Lid.....	1	34	079027007135	Steel Ball (D6).....	1	54	079027007908	Warning Label.....	1
16	079027007116	Pin.....	2	35	079027007136	Crank Handle Pivot.....	1	55	079027007153	End Cap.....	1
17	079027007117	Hex Nut (M4).....	2	36	079027007137	Crank Handle.....	1	56	079027007914	Point Of Purchase Label (POP).....	1
18	079027007118	Washer (M4).....	4	37	079027007138	Fixed Bolt (M6).....	1				
19	079027007119	Cover.....	1	38	079027007139	Tool Box Handle.....	1				
				39	079027007140	Handle Cover.....	2				

PIÈCE	RÉF.	DESCRIPTION	QTÉ	PIÈCE	RÉF.	DESCRIPTION	QTÉ	PIÈCE	RÉF.	DESCRIPTION	QTÉ
1	079027007101	Partie inférieure de la boîte à outils	1	20	079027007120	Vis (M4 x 16 mm Torx Hd.).....	2	40	079027007141	Vis (M4.2 x 13 mm).....	2
2	079027007102	Paroi de gauche.....	1	21	079027007121	Crochet en C.....	4	41	079027007142	Attache en métal.....	2
3	079027007103	Paroi de gauche coulissante.....	1	22	079027007122	Dévidoir.....	2	42	079027007143	Vis (M4 x 38 mm).....	4
4	079027007104	Paroi de droite coulissante.....	1	23	079027007123	Joint torique.....	2	43	079027007144	Rondelle (M8).....	1
5	079027007105	Palier lisse.....	2	24	079027007124	Connecteur.....	1	44	079027007145	Manchon.....	8
6	079027007106	Raccord.....	1	25	079027007125	Ensemble tuyau principal.....	1	45	079027007146	Vis (M4.2 x 16 mm).....	8
7	079027007107	Connecteur.....	2	26	079027007126	Arbre du dévidoir.....	1	46	079027007147	Plaque de raccordement.....	2
8	079027007108	Écrou.....	2	27	079027007127	Goupille élastique (D4 x 25 mm).....	1	47	079027007148	Écrou (M3).....	4
9	079027007109	Ensemble tuyau à air.....	1	28	079027007128	Paroi de droite.....	1	48	079027007149	Vis (M3.5 x 16 mm).....	5
10	079027007110	Rondelle.....	1	29	079027007130	Bras de manivelle.....	1	49	079027007150	Ressort (M16).....	1
11	079027007111	Vis (M8 x 12 mm).....	1	30	079027007131	Rondelle (M6).....	2	50	079027007158	Goupille de loquet.....	4
12	079027007112	Recouvrement pour tuyau à air.....	1	31	079027007132	Vis à tête hexagonale (M6 x 12 mm)...	1	51	079027007159	Bande d'étanchéité.....	1
13	079027007113	Vis (M4.2 x 16 mm).....	8	32	079027007133	Goupille élastique (D3 x 25 mm).....	1	52	079027007903	Étiquette de logo.....	1
14	079027007154	Ensemble poignée (Incl. pièces no. 29 à 37, 43, 49 et 55).....	1	33	079027007134	Ressort.....	1	53	079027007900	Logo de Mobil Air.....	1
15	079027007115	Couvercle de la boîte à outils.....	1	34	079027007135	Boulet d'acier (D6).....	1	54	079027007908	Étiquette d'avertissement.....	1
16	079027007116	Goupille.....	2	35	079027007136	Pivot de la manivelle.....	1	55	079027007153	Bouchon d'extrémité.....	1
17	079027007117	Écrou hexagonal (M4).....	2	36	079027007137	Manivelle.....	1	56	079027007914	Étiquette du point de vente.....	1
18	079027007118	Rondelle (M4).....	4	37	079027007138	Boulon fixe (M6).....	1				
19	079027007119	Couvercle.....	1	38	079027007139	Poignée de la boîte à outils.....	1				
				39	079027007140	Couvercle de la poignée.....	2				