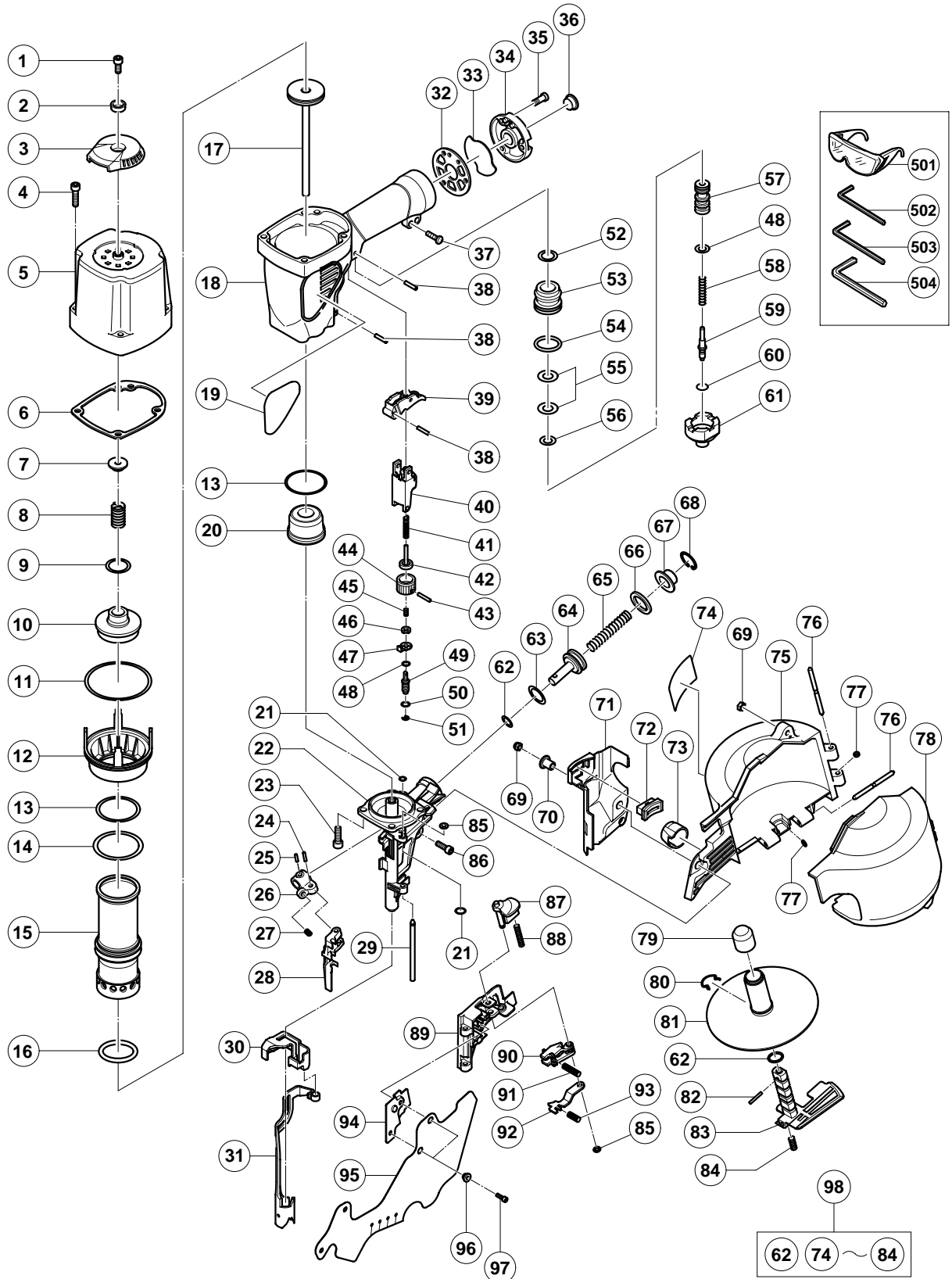


PNEUMATIC TOOL PARTS LIST

COIL NAILER Model NV 75AG

2002 • 8 • 30

(E1)



PARTS

NV 75AG

| ITEM NO. | CODE NO. | DESCRIPTION | NO. USED | REMARKS |
|----------|----------|---|----------|---------|
| 1 | 949-657 | HEX. SOCKET HD. BOLT M6X12 (10 PCS.) | 1 | |
| 2 | 880-515 | PLATE | 1 | |
| 3 | 880-514 | TOP COVER | 1 | |
| 4 | 949-822 | HEX. SOCKET HD. BOLT M5X35 (10 PCS.) | 4 | |
| 5 | 883-451 | EXHAUST COVER | 1 | |
| 6 | 883-452 | GASKET (B) | 1 | |
| 7 | 882-914 | HEAD BUMPER | 1 | |
| 8 | 882-913 | HEAD VALVE SPRING | 1 | |
| 9 | 876-796 | O-RING (P-22) | 1 | |
| 10 | 882-912 | HEAD VALVE (A) | 1 | |
| 11 | 878-863 | O-RING (S-70) | 1 | |
| 12 | 882-910 | CYLINDER PLATE | 1 | |
| 13 | 882-874 | O-RING (S-46) | 2 | |
| 14 | 877-368 | O-RING (1AP-48) | 1 | |
| 15 | 883-989 | CYLINDER | 1 | |
| 16 | 883-431 | O-RING (I.D 37) | 1 | |
| 17 | 883-980 | PISTON (H) | 1 | |
| 18 | 883-988 | BODY | 1 | |
| 19 | | NAME PLATE | 1 | |
| 20 | 883-432 | PISTON BUMPER | 1 | |
| 21 | 874-436 | O-RING (P-4) | 2 | |
| 22 | 883-981 | NOSE | 1 | |
| 23 | 880-675 | NYLOCK HIGH TENSION BOLT M6X20 | 4 | |
| 24 | 883-093 | PLUNGER (B) | 1 | |
| 25 | 949-497 | ROLL PIN D4X16 (10 PCS.) | 1 | |
| 26 | 883-144 | FEEDER ARM (B) | 1 | |
| 27 | 883-143 | FEEDER SPRING | 1 | |
| 28 | 883-092 | FEEDER | 1 | |
| 29 | 883-091 | NAIL GUIDE SHAFT | 1 | |
| 30 | 882-900 | PUSHING LEVER COVER (B) | 1 | |
| 31 | 883-852 | PUSHING LEVER (A) | 1 | |
| 32 | 883-678 | GASKET (B) | 1 | |
| 33 | 883-679 | DUST FILTER | 1 | |
| 34 | 881-949 | CAP | 1 | |
| 35 | 949-821 | HEX. SOCKET HD. BOLT M5X16 (10 PCS.) | 3 | |
| 36 | 872-035 | DUST CAP | 1 | |
| 37 | 880-881 | MACHINE SCREW (W/WASHERS) M5X30 (BLACK) | 1 | |
| 38 | 949-865 | ROLL PIN D3X28 (10 PCS.) | 3 | |
| 39 | 883-990 | TRIGGER | 1 | |
| 40 | 882-885 | PUSHING LEVER GUIDE | 1 | |
| 41 | 882-892 | PUSHING LEVER SPRING | 1 | |
| 42 | 882-891 | PUSHING LEVER (C) | 1 | |
| 43 | 880-093 | ROLL PIN D2X16 | 1 | |
| 44 | 883-982 | ADJUSTER | 1 | |
| 45 | 882-890 | ADJUSTER SPRING | 1 | |
| 46 | 882-887 | ADJUSTER PLATE (B) | 1 | |
| 47 | 882-886 | ADJUSTER PLATE (A) | 1 | |
| 48 | 981-317 | O-RING (S-4) | 2 | |
| 49 | 882-888 | PUSHING LEVER (B) | 1 | |
| 50 | 872-822 | O-RING (S-5) | 1 | |
| 51 | 872-971 | RETAINING RING (E-TYPE) FOR D3 SHAFT | 1 | |

PARTS

NV 75AG

| ITEM NO. | CODE NO. | DESCRIPTION | NO. USED | REMARKS |
|----------|----------|---------------------------------------|----------|-----------------|
| 52 | 877-699 | HEAD VALVE O-RING (I.D 16.8) | 1 | |
| 53 | 878-881 | VALVE BUSHING (B) | 1 | |
| 54 | 878-885 | O-RING (S-18) | 1 | |
| 55 | 878-925 | O-RING (I.D 8.8) | 2 | |
| 56 | 878-887 | O-RING (I.D 11) | 1 | |
| 57 | 880-672 | VALVE PISTON (B) | 1 | |
| 58 | 878-884 | PLUNGER SPRING | 1 | |
| 59 | 880-673 | PLUNGER (A) | 1 | |
| 60 | 878-888 | O-RING (I.D 1.8) | 1 | |
| 61 | 880-671 | VALVE BUSHING (A) | 1 | |
| 62 | 872-645 | O-RING (P-9) | 2 | |
| 63 | 880-330 | O-RING (P-21) | 1 | |
| 64 | 883-300 | FEED PISTON | 1 | |
| 65 | 882-883 | FEED SPRING | 1 | |
| 66 | 877-711 | BUMPER | 1 | |
| 67 | 880-331 | FEED PISTON COVER | 1 | |
| 68 | 939-555 | RETAINING RING FOR D28 HOLE (10 PCS.) | 1 | |
| 69 | 877-371 | NYLON NUT M5 | 2 | |
| 70 | 882-907 | SLEEVE | 1 | |
| 71 | 883-853 | PUSHING LEVER COVER (A) | 1 | |
| 72 | 882-901 | PROTECTOR (B) | 1 | |
| 73 | 883-106 | NOSE CAP (A) | 1 | |
| 74 | 878-184 | WARNING LABEL | 1 | |
| 75 | 883-984 | MAGAZINE (A) | 1 | |
| 76 | 883-111 | PIN | 2 | |
| 77 | 877-826 | FEEDER SHAFT RING | 2 | |
| 78 | 883-985 | MAGAZINE COVER (A) | 1 | |
| 79 | 883-987 | HOLDER CAP (A) | 1 | |
| 80 | 880-398 | RATCHET SPRING | 1 | |
| 81 | 880-503 | NAIL HOLDER | 1 | |
| 82 | 878-791 | ROLL PIN D2.5X12 | 1 | |
| 83 | 883-986 | HOLDER SHAFT (A) | 1 | |
| 84 | 881-826 | SPRING | 1 | |
| 85 | 880-319 | SHAFT RING | 2 | |
| 86 | 949-757 | HEX. SOCKET HD. BOLT M5X20 (10 PCS.) | 1 | |
| 87 | 880-318 | GUIDE LOCK | 1 | |
| 88 | 880-446 | SPRING | 1 | |
| 89 | 883-392 | NAIL GUIDE | 1 | |
| 90 | 883-085 | NAIL STOPPER (A) | 1 | |
| 91 | 883-088 | STOPPER SPRING (A) | 1 | |
| 92 | 883-086 | NAIL STOPPER (B) | 1 | |
| 93 | 883-087 | STOPPER SPRING (B) | 1 | |
| 94 | 883-089 | NAIL GUIDE COVER | 1 | |
| 95 | 883-393 | COVER | 1 | |
| 96 | 882-881 | SLEEVE (B) | 2 | |
| 97 | 880-630 | NYLOCK HEX. SOCKET HD. BOLT M4X12 | 2 | |
| 98 | 883-983 | MAGAZINE ASS'Y | 1 | INCLUD.62,74-84 |
| | | | | |
| | | | | |
| | | | | |
| | | | | |

