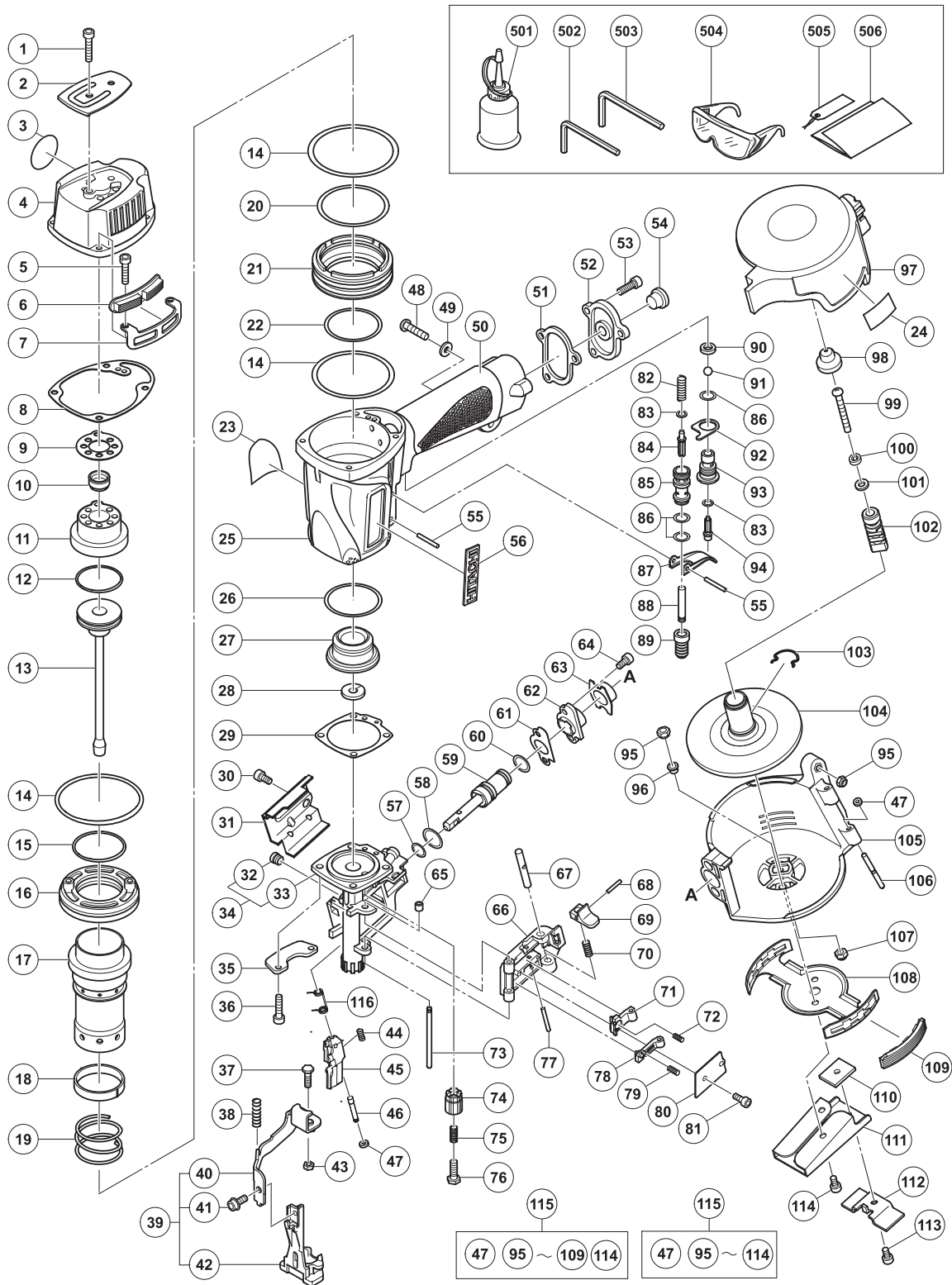
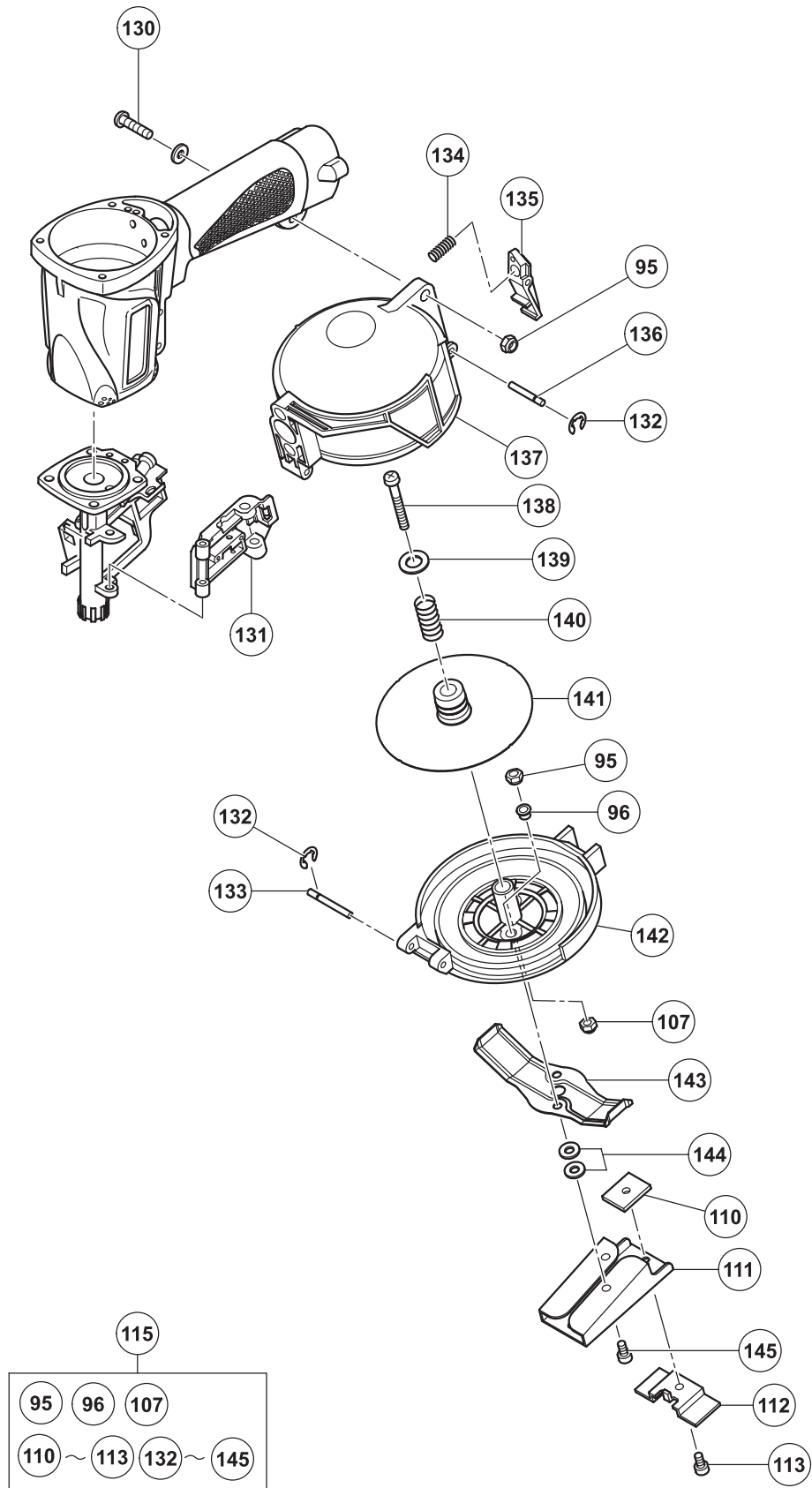


PNEUMATIC TOOL PARTS LIST

COIL NAILER
Model NV 45AE

2007·11·27
(E1)





PARTS

NV 45AE

| ITEM NO. | CODE NO. | DESCRIPTION | NO. USED | REMARKS |
|----------|----------|--------------------------------------|----------|-----------------------------------|
| 1 | 949-662 | HEX. SOCKET HD. BOLT M5X25 (10 PCS.) | 2 | |
| 2 | 876-179 | TOP COVER | 1 | |
| * 3 | 883-513 | WARNING LABEL (A) | 1 | FOR USA, CAN |
| 4 | 886-389 | EXHAUST COVER (B) | 1 | |
| 5 | 949-757 | HEX. SOCKET HD. BOLT M5X20 (10 PCS.) | 4 | |
| 6 | 883-891 | PROTECTOR | 2 | |
| 7 | 883-890 | BODY GUARD | 2 | |
| 8 | 883-892 | GASKET (F) | 1 | |
| 9 | 876-713 | GASKET (G) | 1 | |
| 10 | 878-417 | EXHAUST VALVE | 1 | |
| 11 | 876-711 | HEAD CAP | 1 | |
| 12 | 876-174 | PISTON O-RING | 1 | |
| 13 | 886-391 | PISTON (H) | 1 | |
| 14 | 876-161 | O-RING (S-65) | 3 | |
| 15 | 877-126 | CYLINDER O-RING (D) | 1 | |
| 16 | 876-168 | CYLINDER PLATE | 1 | |
| 17 | 877-486 | CYLINDER | 1 | |
| 18 | 876-167 | CYLINDER RING | 1 | |
| 19 | 876-172 | CYLINDER SPRING | 1 | |
| 20 | 877-123 | CYLINDER O-RING (A) | 1 | |
| 21 | 877-122 | CYLINDER GUIDE | 1 | |
| 22 | 877-124 | CYLINDER O-RING (B) | 1 | |
| 23 | | NAME PLATE | 1 | |
| * 24 | 878-183 | WARNING LABEL | 1 | FOR EUROPE |
| 25 | 886-386 | BODY ASS'Y | 1 | INCLUD. 50 |
| 26 | 877-125 | CYLINDER O-RING (C) | 1 | |
| 27 | 878-179 | PISTON BUMPER | 1 | |
| 28 | 886-392 | BUMPER SHEET | 1 | |
| 29 | 883-881 | GASKET (A) | 1 | |
| 30 | 949-818 | HEX. SOCKET HD. BOLT M5X8 (10 PCS.) | 2 | |
| 31 | 886-381 | GUARD | 1 | |
| 32 | 886-379 | MAGNET | 1 | |
| 33 | 886-378 | NOSE | 1 | |
| 34 | 886-377 | NOSE ASS'Y | 1 | INCLUD. 32, 33 |
| 35 | 878-173 | NOSE GUARD | 2 | |
| 36 | 885-686 | NYLOCK HEX. SOCKET HD. BOLT M5X20 | 4 | |
| 37 | 875-650 | SAFETY BOLT | 1 | |
| 38 | 878-178 | SPRING | 1 | |
| 39 | 886-383 | PUSHING LEVER ASS'Y | 1 | INCLUD. 40-42 |
| 40 | 886-385 | PUSHING LEVER (B) | 1 | |
| 41 | 878-540 | NYLOCK BOLT (W/FLANGE) M5X8 | 1 | |
| 42 | 886-384 | PUSHING LEVER (A) | 1 | |
| 43 | 949-555 | NUT M5 (10 PCS.) | 1 | |
| 44 | 880-321 | PUSHING SPRING | 1 | |
| 45 | 886-380 | FEEDER | 1 | |
| 46 | 877-825 | FEEDER SHAFT | 1 | |
| 47 | 877-826 | FEEDER SHAFT RING | 2 | |
| 48 | 949-242 | MACHINE SCREW M5X22 (10 PCS.) | 1 | |
| 49 | 876-205 | WASHER | 1 | |
| 50 | | GRIP RUBBER | 1 | (SUPPLIED WITH ITEM NO. 601, 602) |

PARTS

NV 45AE

| ITEM NO. | CODE NO. | DESCRIPTION | NO USED | REMARKS |
|----------|----------|--------------------------------------|---------|-----------------|
| 51 | 877-131 | GASKET (D) | 1 | |
| 52 | 880-036 | CAP | 1 | |
| 53 | 949-821 | HEX. SOCKET HD. BOLT M5X16 (10 PCS.) | 3 | |
| 54 | 872-035 | DUST CAP | 1 | |
| 55 | 949-866 | ROLL PIN D3X30 (10 PCS.) | 2 | |
| 56 | 886-342 | HITACHI PLATE | 1 | |
| 57 | 872-645 | O-RING (P-9) | 1 | |
| 58 | 877-763 | FEED PISTON O-RING (I.D.14) | 1 | |
| 59 | 886-382 | FEED PISTON | 1 | |
| 60 | 877-764 | FEED PISTON O-RING (I.D.11) | 1 | |
| 61 | 877-767 | GASKET (E) | 1 | |
| 62 | 877-766 | FEED PISTON COVER | 1 | |
| 63 | 877-479 | MAGAZINE BUSHING | 1 | |
| 64 | 949-819 | HEX. SOCKET HD. BOLT M5X10 (10 PCS.) | 2 | |
| 65 | 883-885 | SHAFT RING | 1 | |
| * 66 | 886-398 | NAIL GUIDE (A) | 1 | FOR USA, EUROPE |
| 67 | 877-820 | LOCK SHAFT | 1 | |
| 68 | 949-776 | ROLL PIN D3X10 (10 PCS.) | 1 | |
| 69 | 326-774 | GUIDE LOCK (A) | 1 | |
| 70 | 877-372 | SPRING | 1 | |
| 71 | 886-060 | MAIN NAIL STOPPER (A) | 1 | |
| 72 | 876-681 | MAIN STOPPER SPRING | 1 | |
| 73 | 883-884 | NAIL GUIDE SHAFT | 1 | |
| 74 | 883-882 | ADJUSTER | 1 | |
| 75 | 883-883 | ADJUSTER SPRING | 1 | |
| 76 | 958-805 | BOLT | 1 | |
| 77 | 949-865 | ROLL PIN D3X28 (10 PCS.) | 1 | |
| 78 | 886-061 | NAIL STOPPER (A) | 1 | |
| 79 | 877-468 | SUB STOPPER SPRING | 1 | |
| 80 | 877-469 | NAIL GUIDE COVER | 1 | |
| 81 | 949-766 | HEX. SOCKET HD. BOLT M4X6 (10 PCS.) | 2 | |
| 82 | 875-643 | PLUNGER SPRING | 1 | |
| 83 | 874-820 | PLUNGER O-RING | 2 | |
| 84 | 878-155 | PLUNGER (A) | 1 | |
| 85 | 878-166 | VALVE BUSHING | 1 | |
| 86 | 875-638 | O-RING (S-12) | 3 | |
| 87 | 876-203 | TRIGGER | 1 | |
| 88 | 878-171 | PLUNGER (B) | 1 | |
| 89 | 878-170 | VALVE RUBBER COVER | 1 | |
| 90 | 878-734 | VALVE PACKING | 1 | |
| 91 | 875-645 | URETHANE BALL (C) D7.14 | 1 | |
| 92 | 875-644 | VALVE PLATE | 1 | |
| 93 | 877-335 | TRIGGER VALVE BUSHING | 1 | |
| 94 | 878-121 | TRIGGER PLUNGER | 1 | |
| 95 | 945-255 | U-NUT M5 | 3 | |
| 96 | 878-164 | SLEEVE | 2 | |
| * 97 | 886-395 | MAGAZINE COVER | 1 | FOR USA, EUROPE |
| * 98 | 883-900 | HOLDER CAP | 1 | FOR USA, EUROPE |
| 99 | 949-230 | MACHINE SCREW M4X50 (10 PCS.) | 1 | |
| 100 | 949-453 | SPRING WASHER M4 (10 PCS.) | 1 | |

