

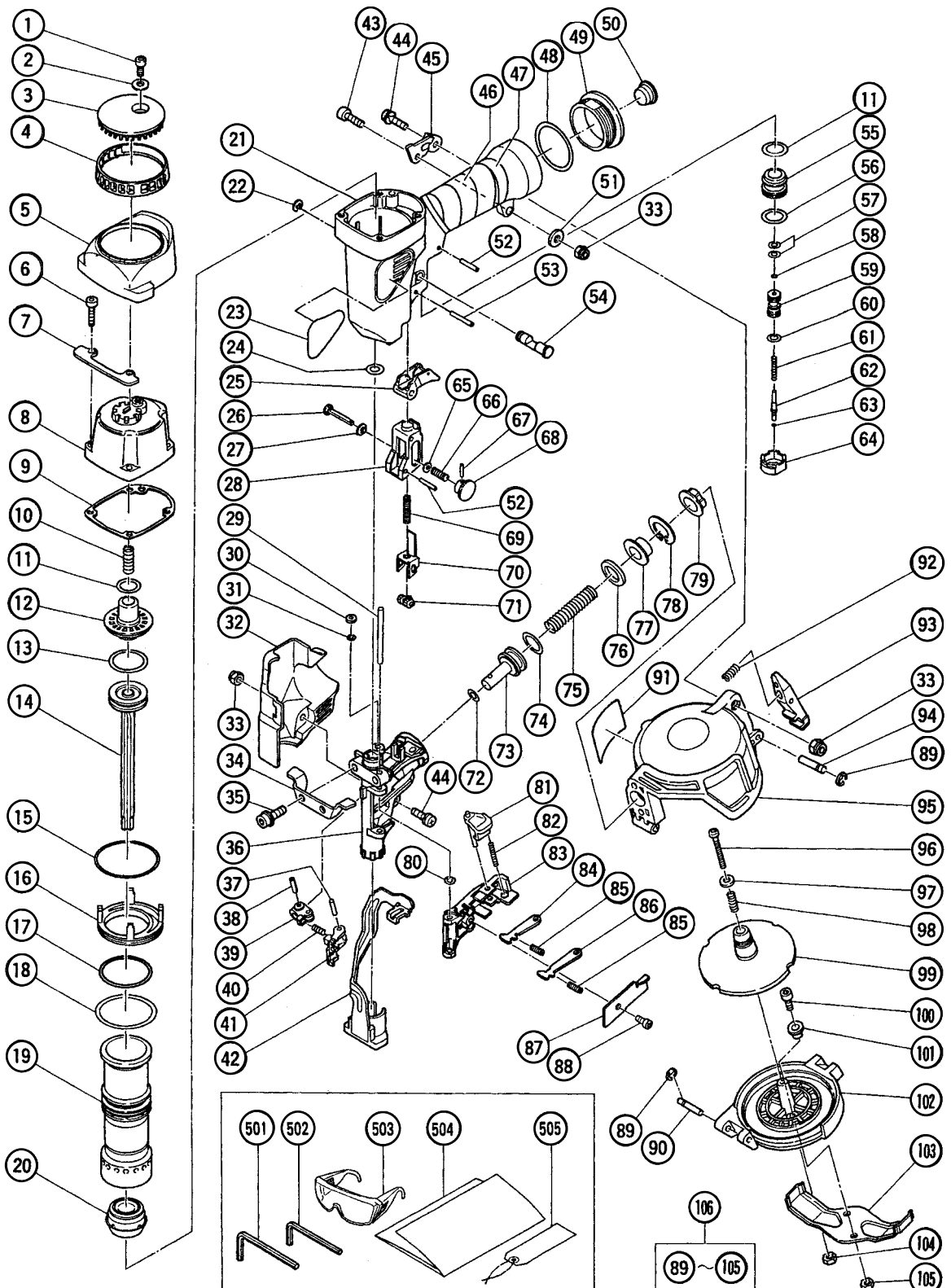
## PNEUMATIC TOOL PARTS LIST

■ COIL NAILER

2000・8・25

Model NV 45AC

(E1)



## PARTS

NV 45AC

ITEM NO.	CODE NO.	DESCRIPTION	NO. USED	REMARKS
1	949-819	HEX. SOCKET HD. BOLT M5X10 (10 PCS.)	1	
2	944-260	WASHER	1	
3	881-841	TOP COVER	1	
4	881-840	HEAD RING	1	
5	883-369	PROTECTOR	1	
6	883-368	HEX. SOCKET HD. BOLT M5X22	4	
7	883-367	BODY GUARD	1	
8	881-879	EXHAUST COVER	1	
9	881-839	GASKET (A)	1	
10	881-851	HEAD VALVE SPRING	1	
11	877-699	HEAD VALVE O-RING (I.D 16.8)	2	
12	881-837	HEAD VALVE (A)	1	
13	883-365	O-RING (1BP-28)	1	
14	883-364	PISTON	1	
15	990-067	O-RING (1AS-50)	1	
16	881-831	CYLINDER PLATE	1	
17	984-483	O-RING (S-36)	1	
18	881-864	CYLINDER O-RING	1	
19	881-829	CYLINDER	1	
20	883-366	PISTON BUMPER	1	
21	883-363	BODY ASS'Y	1	INCLUD.46,47
22	955-479	RETAINING RING (E-TYPE) FOR D6 SHAFT	1	
23		NAME PLATE	1	
24	876-031	O-RING (S-16)	1	
25	880-674	TRIGGER (A)	1	
26	881-846	ADJUSTER SHAFT	1	
27	881-847	LATCH	1	
28	316-389	PUSHING LEVER GUIDE	1	
29	881-811	NAIL GUIDE SHAFT	1	
30	883-351	WASHER	1	
31	873-093	O-RING (1AP-3)	1	
32	883-362	GUARD	1	
33	877-371	NYLON NUT M5	3	
34	883-352	NOSE GUARD	1	
35	993-041	NYLOCK BOLT (W/FLANGE) M6X25	2	
36	883-350	NOSE	1	
37	983-545	NEEDLE ROLLER	1	
38	949-770	ROLL PIN D4X14 (10 PCS.)	1	
39	878-132	FEEDER ARM	1	
40	878-340	FEEDER SPRING	1	
41	883-357	FEEDER	1	
42	883-359	PUSHING LEVER (A)	1	
43	949-658	HEX. SOCKET HD. BOLT M5X18 (10 PCS.)	1	
44	308-386	MACHINE SCREW (W/SP. WASHER) M5X16 (BLACK)	2	
45	883-361	HANDLE ARM	1	
46	880-408	GRIP TAPE	1	
47	880-407	TAPE	2	
48	880-183	O-RING (I.D 37.2)	1	
49	880-379	CAP	1	
50	872-035	DUST CAP	1	
51	876-205	WASHER	1	

\* : ALTERNATIVE PARTS

8 - 00

## PARTS

NV 45AC

ITEM NO.	CODE NO.	DESCRIPTION	NO. USED	REMARKS
52	949-518	ROLL PIN D3X18 (10 PCS.)	2	
53	949-539	ROLL PIN D3X25 (10 PCS.)	1	
54	881-952	TRIGGER PIN	1	
55	878-881	VALVE BUSHING (B)	1	
56	878-885	O-RING (S-18)	1	
57	878-925	O-RING (I.D 8.8)	2	
58	981-317	O-RING (S-4)	1	
59	880-672	VALVE PISTON (B)	1	
60	878-887	O-RING (I.D 11)	1	
61	878-884	PLUNGER SPRING	1	
62	880-673	PLUNGER (A)	1	
63	878-888	O-RING (I.D 1.8)	1	
64	880-671	VALVE BUSHING (A)	1	
65	949-429	BOLT WASHER M4 (10 PCS.)	1	
66	881-853	ADJUSTER SPRING	1	
67	878-222	ROLL PIN D1.6X12	1	
68	881-848	ADJUSTER KNOB	1	
69	881-882	SPRING	1	
70	881-843	PUSHING LEVER (B)	1	
71	881-845	ADJUSTER	1	
72	872-645	O-RING (P-9)	1	
73	883-358	FEED PISTON	1	
74	873-570	O-RING (P-18)	1	
75	880-409	SPRING	1	
76	877-476	BUMPER	1	
77	880-170	FEED PISTON COVER	1	
78	983-748	RETAINING RING FOR D24 HOLE	1	
79	880-177	MAGAZINE BUSHING	1	
80	874-436	O-RING (P-4)	1	
81	878-103	GUIDE LOCK	1	
82	880-446	SPRING	1	
83	883-353	NAIL GUIDE	1	
84	883-354	NAIL STOPPER (A)	1	
85	880-393	SPRING	2	
86	883-355	NAIL STOPPER (B)	1	
87	883-356	NAIL GUIDE COVER	1	
88	880-830	NYLOCK HEX. SOCKET HD. BOLT M5X12	1	
89	872-971	RETAINING RING (E-TYPE) FOR D3 SHAFT	2	
90	877-152	HINGE PIN	1	
91	880-450	WARNING LABEL	1	
92	877-149	STOPPER SPRING	1	
93	880-146	MAGAZINE STOPPER	1	
94	877-150	STOPPER PIN	1	
95	878-158	MAGAZINE	1	
96	949-228	MACHINE SCREW M4X40 (10 PCS.)	1	
97	875-246	WASHER	1	
98	877-894	HOLDER SPRING	1	
99	878-159	NAIL HOLDER	1	
100	949-765	HEX. SOCKET HD. BOLT M5X12 (10 PCS.)	2	
101	878-164	SLEEVE	2	
102	878-161	MAGAZINE COVER	1	

