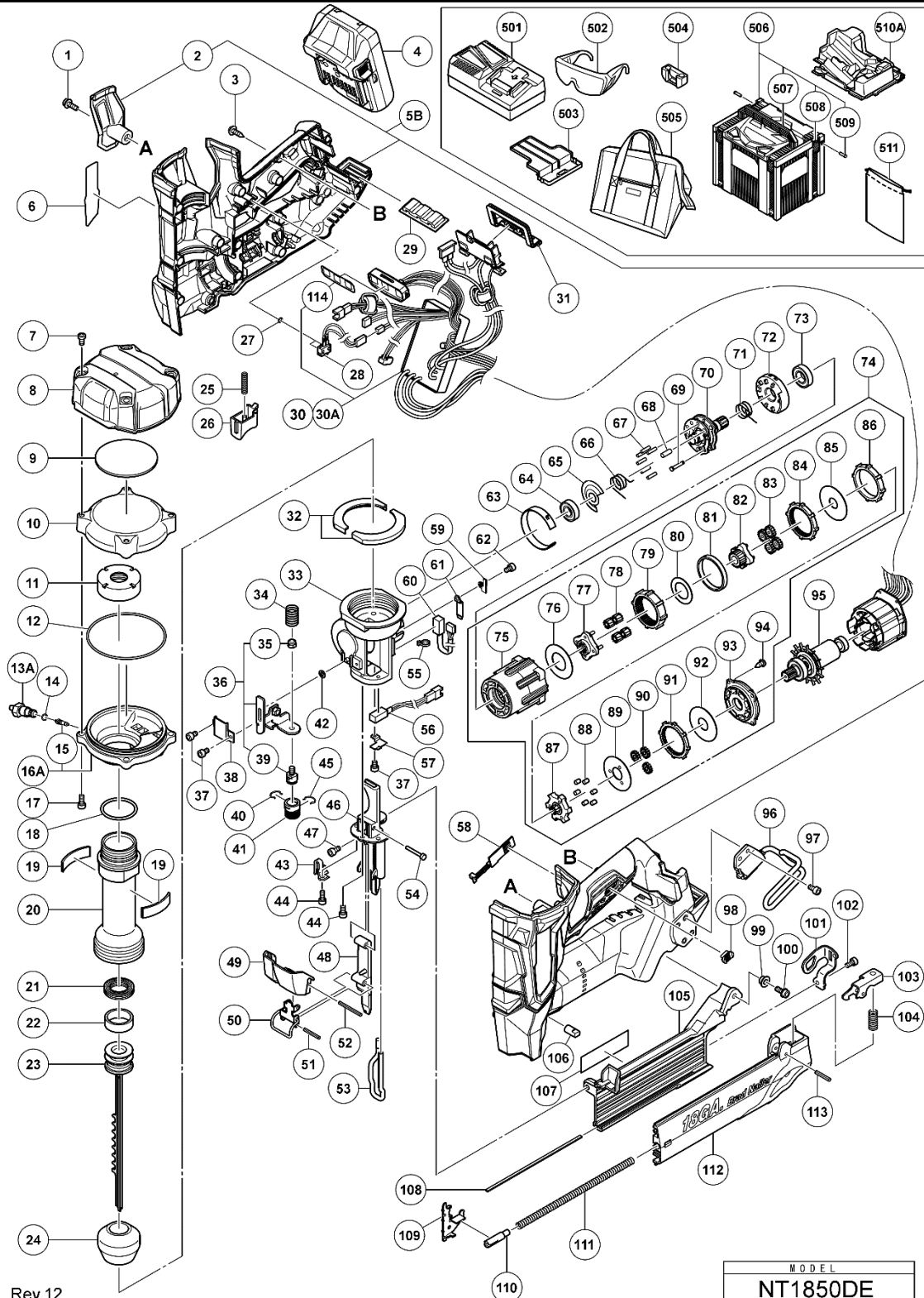


ELECTRIC TOOL PARTS LIST

■ CORDLESS BRAD NAILER
MODEL NT 1850DES

2021 • 05 • 25
(E2)



Rev.12
22.7.2020

MODEL
NT1850DE

PARTS

NT1850DES

ITEM NO.	CODE NO.	DESCRIPTION	NO. USED	REMARKS
1	880219	HEX. SOCKET HD. BOLT (W/FLANGE) M5X16	1	
2	371225	HOUSING (C)	1	
3	301653	TAPPING SCREW (W/FLANGE) D4X20 (BLACK)	14	
**4	339782	BATTERY BSL 1830C (USA.CAN)	1	INCLUD.503
**5B	371009M	HOUSING ASS'Y	1	INCLUD.2 FOR USA.CAN
6		LABEL	1	
7	371015	HEX. SOCKET BOLT M5	4	
8	371014	TOP COVER	1	
9	371012	RUBBER CUSHION (C)	1	
10	371035	CHAMBER COVER	1	
11	371040	SPECIAL NUT M36	1	
12	371037	O-RING (I.D 79.5)	1	
13A	376085	CHARGE CAP	1	
14	872822	O-RING (S-5)	1	
15	371038	VALVE CORE	1	
16A	376548	CHAMBER BASE ASS'Y	1	INCLUD.15
17	949658	HEX. SOCKET HD. BOLT M5X18 (10 PCS.)	4	
18	371042	O-RING (I.D 32.99)	1	
19	371011	RUBBER CUSHION (B)	2	
20	371041	CYLINDER	1	
21	371046	X-RING	1	
22	371047	SLIDE RING	1	
23	371043	PISTON	1	
24	371048	PISTON BUMPER	1	
25	332000	SPRING (T)	1	
26	371021	TRIGGER	1	
27	371020	O-RING (I.D 2.5)	2	
28	371019	SWITCH CABLE (A)	1	
29	332668	RUBBER CUSHION	1	
**30A	376523	WIRING ASS'Y	1	INCLUD.114 FOR USA.CAN
31	370728	TERMINAL RUBBER (A)	1	
32	371010	RUBBER CUSHION (A)	2	
33	371049	NOSE	1	
34	371066	SPRING	1	
35	877371	NYLON NUT M5	1	
36	371063	PUSHING LEVER ARM ASS'Y	1	INCLUD.35.39
37	325077	SEAL LOCK HEX. SOCKET HD. BOLT M3X6	3	
38	371058	PUSHING LEVER ARM HOLDER	1	
39	371065	PUSHING LEVER PIECE	1	
40	881765	RATCHET SPRING	1	
41	887358	ADJUSTER	1	
42	371062	WASHER D4	1	
43	371059	PUSHING LEVER ARM HOLDER (C)	1	
44	886311	SEAL LOCK HEX. SOCKET HD. BOLT M4X12	3	
45	886331	RATCHET SPRING	1	
46	371055	BLADE GUIDE	1	
47	880413	NYLOCK HEX. SOCKET HD. BOLT M4X10	1	
48	371068	GUIDE PLATE	1	
49	371078	LOCK LEVER COVER	1	
50	371074	LOCK LEVER	1	
51	371077	ROLL PIN D3X22	1	
52	371080	ROLL PIN D3X32	1	
53	371081	PUSHING LEVER (A)	1	
54	371071	GUIDE PIN	1	
55	6696839	WIRE BAND	1	
56	371022	SENSOR (B)	1	
57	371052	SENSOR HOLDER (A)	1	
58	331790	LEVER (C)	1	
59	371053	SENSOR HOLDER (A)	1	
60	371023	SENSOR (C)	1	
61	371054	SENSOR HOLDER (B)	1	
62	325241	SEAL LOCK HEX. SOCKET HD. BOLT M3X8	1	
63	371051	SHIELD RING	1	

