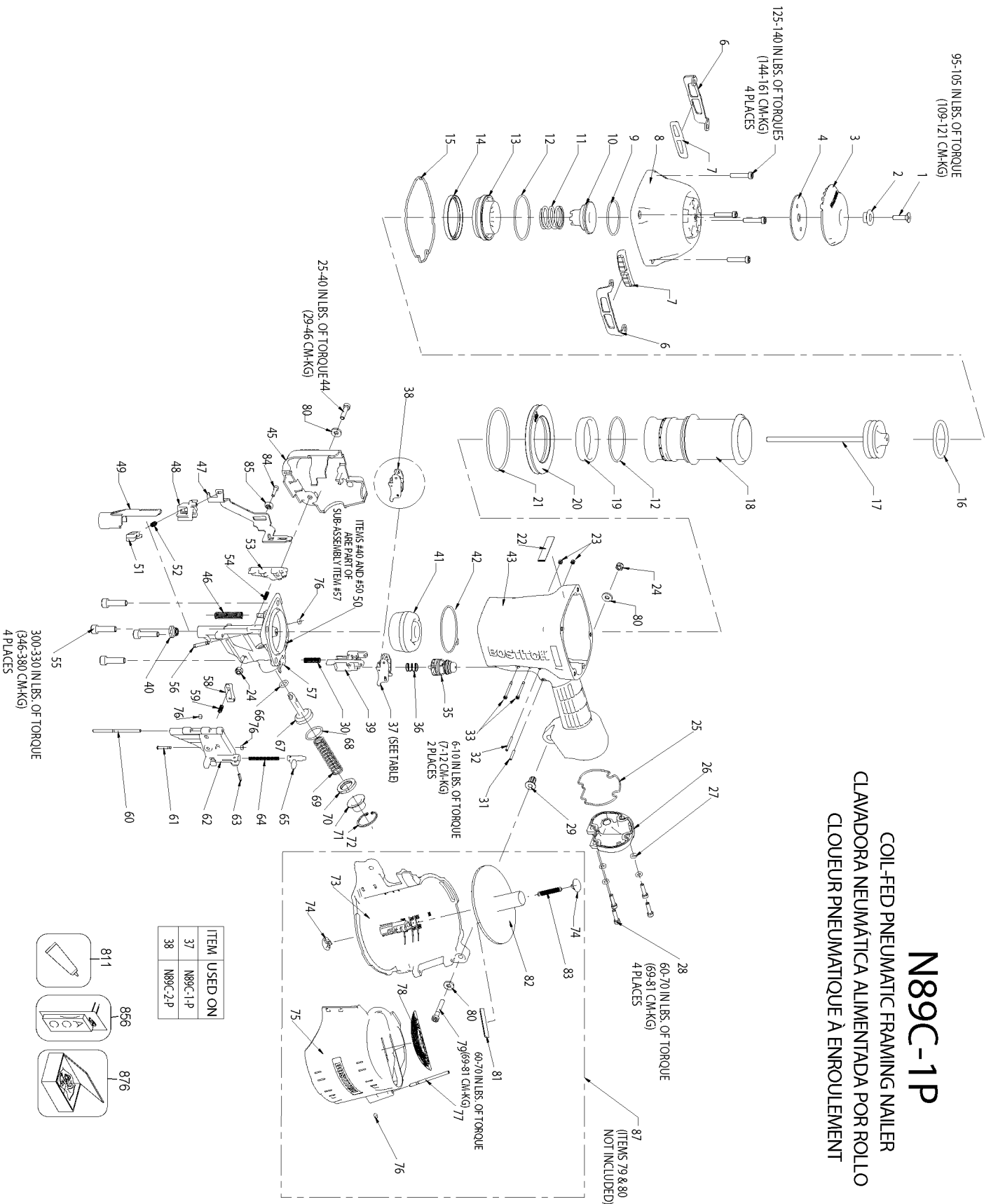


# N89C-1P

COIL-FED PNEUMATIC FRAMING NAILER  
 CLAVADORA NEUMÁTICA ALIMENTADA POR ROLLO  
 CLOUEUR PNEUMATIQUE À ENROULEMENT



## Parts List for N89C-1P Type 0

| Item Number | Part Number | Description          | Qty Required |
|-------------|-------------|----------------------|--------------|
| 1           | MSF6100-25  | SCREW-SFHCS-M6X1.00X | 1            |
| 2           | 163859      | BUSHING-EXHAUST DEFL | 1            |
| 3           | 163818      | DEFLECTOR-EXHAUST    | 1            |
| 4           | 163830      | PLATE-CAP            | 1            |
| 5           | MSC6100-30  | SCREW-SHCS-M6X1.00X3 | 4            |
| 6           | 163827      | PLATE-WEAR           | 2            |
| 7           | 149819      | WEAR GUIDE           | 2            |
| 8           | 163848      | FRAME CAP-MACHINING  | 1            |
| 9           | 105814      | O-RING-1.929X.098    | 1            |
| 10          | 163820      | BUMPER-HEAD VALVE    | 1            |
| 11          | 163844      | SPRING-HEAD VALVE    | 1            |
| 12          | 163822      | O-RING-2.487X.103XNB | 2            |
| 13          | 163821      | LOWER BODY-HEAD VALV | 1            |
| 14          | 163823      | SEAL-HEAD VALVE      | 1            |
| 15          | 163845      | SEAL-FRAME/CAP       | 1            |
| 16          | 851606-S    | O-RING-1.850X.210    | 1            |
| 17          | 163816      | ASSEMBLY-PISTON/DRIV | 1            |
| 18          | 163824      | SLEEVE-CYLINDER      | 1            |
| 19          | 175520      | SEAL-CHECK           | 1            |
| 20          | 163855      | RING-CYLINDER SLEEVE | 1            |
| 21          | 108718      | O-RING-3.484X.139    | 1            |
| 22          | 163881      | LABEL-N89C           | 1            |
| 23          | MHE3050-100 | NUT-NYLON M3X.50     | 2            |
| 24          | MHE6100-100 | NUT-ESN M6X1         | 2            |
| 25          | 163856      | SEAL-END CAP         | 1            |
| 26          | 163843      | END CAP-PAINT        | 1            |
| 27          | T50118      | WASHER-PLAIN         | 4            |

## Parts List for N89C-1P Type 0

| Item Number | Part Number | Description          | Qty Required |
|-------------|-------------|----------------------|--------------|
| 28          | MSC5080-20  | SCREW-SOC HD. CAP M5 | 4            |
| 29          | 123859      | BUSHING-FLANGED ISOL | 1            |
| 30          | 166781      | SPRING-UPPER TRIP    | 1            |
| 31          | MPP030020   | PIN-SPIRAL M3X20MM   | 1            |
| 32          | 100298      | PIN-SPIRAL M3X30     | 1            |
| 33          | 108562      | SCREW-TRIGGER PIVOT  | 1            |
| 35          | TVA6        | KIT-TRIGGER VALVE    | 1            |
| 36          | 100387      | SPRING-COMPRESSION   | 1            |
| 37          | 191791      | CONTACT TRIGGER ASSY | 1            |
| 38          | SEQ7        | KIT-SEQUENTIAL TRIP  | 1            |
| 39          | 163883      | GUIDE-ARM            | 1            |
| 40          | N100120     | BUSHING-WEAR         | 1            |
| 41          | 107231      | BUMPER-DRIVE         | 1            |
| 42          | 163884      | SEAL-NOSE            | 1            |
| 43          | 171127      | FRAME-OVERMOLD       | 1            |
| 44          | MSC6100-25  | SCREW-SHCS-M6X1.00X2 | 1            |
| 45          | 166766      | COVER-TRIP           | 1            |
| 46          | 116970      | SPRING-CONTACT ARM   | 1            |
| 47          | 163908      | ARM-UPPER CONTACT    | 1            |
| 48          | 163906      | CASTING-HOUSING CONT | 1            |
| 49          | 166767      | ARM-LOWER CONTACT-SM | 1            |
| 50          | 171120      | NOSE-MACHINING-N89C  | 1            |
| 51          | 108225      | CASTING-PLUNGER      | 1            |
| 52          | 115230      | SPRING-HOUSING       | 1            |
| 53          | 166773      | PAWL-FEED-MACHINING- | 1            |
| 54          | 166774      | SPRING-FEED PAWL     | 1            |
| 55          | MSC8125-30  | SCREW-SHCS M8X30     | 4            |

## Parts List for N89C-1P Type 0

| Item Number | Part Number | Description          | Qty Required |
|-------------|-------------|----------------------|--------------|
| 56          | 166787      | PIN-FEED PAWL        | 1            |
| 57          | 171121      | ASSEMBLY-NOSE/WEAR B | 1            |
| 58          | N70149      | PAWL CHECK           | 1            |
| 59          | 854011      | COMPRESSION SPRING   | 1            |
| 60          | N80125      | PIN-SPECIAL          | 1            |
| 61          | N70140      | PIN-SPECIAL(STEP)    | 1            |
| 62          | 166760      | DOOR-MACHINING-N89C  | 1            |
| 63          | MPG030012   | PIN SPRING           | 1            |
| 64          | 854013      | SPRING,CMPRSN.       | 1            |
| 65          | N70150      | LATCH DOOR           | 1            |
| 66          | 88999       | O-RING               | 1            |
| 67          | 163894      | PISTON-FEED          | 1            |
| 68          | 87112       | O-RING               | 1            |
| 69          | 163930      | SPRING-FEED PISTON   | 1            |
| 70          | 163897      | STOP-FEED PISTON     | 1            |
| 71          | 163895      | COLLAR-SPRING        | 1            |
| 72          | 163896      | RETAINING RING-INCH  | 1            |
| 73          | 163892      | PLATFORM-CANISTER-N8 | 1            |
| 74          | 149910      | CAP-NAIL TRAY        | 1            |
| 75          | 163910-S    | BOSTITCH COVER       | 1            |
| 76          | 854004      | WASHER-RUBBER-7      | 1            |
| 77          | 166771      | PIN-CANISTER COVER   | 1            |
| 78          | 165358      | LABEL-WARNING-PALLET | 1            |
| 79          | MSC6100-40  | SCREW-SOC. HD. CAP M | 1            |
| 80          | MPW6.2      | WASHER.SPECIAL       | 1            |
| 81          | 120927      | LABEL-SENSOR SMALL ( | 1            |
| 82          | 180545      | OVERMOLD-TRAY        | 1            |

## Parts List for N89C-1P Type 0

| Item Number | Part Number   | Description          | Qty Required |
|-------------|---------------|----------------------|--------------|
| 83          | 166768        | SPRING-EXTENSION - C | 1            |
| 84          | MSC4070-16    | SCREW-SHCS-M4X0.7X16 | 1            |
| 85          | 163876        | BUSHING-UPPER CONTAC | 1            |
| 87          | 166807        | ASSEMBLY-CANISTER    | 1            |
| 88          | 1134B-0864701 | PLUG-DUST SHIELD     | 1            |
| 811         | 851385        | LOCTITE              | 1            |
| 876         | N89ORK        | O-RING KIT           | 1            |