



SERVICE PARTS LIST

BULLETIN NO.
54-04-F600

SPECIFY CATALOG NO. AND SERIAL NO. WHEN ORDERING PARTS				REVISED BULLETIN	DATE
MX FUEL™ 8.0 Li-Ion Battery Pack					Feb. 2023
CATALOG NO.	MXFXC608	STARTING SERIAL	L18A	WIRING INSTRUCTION	

EXAMPLE:
Component Parts (Small #) Are Included
When Ordering The Assembly (Large #).

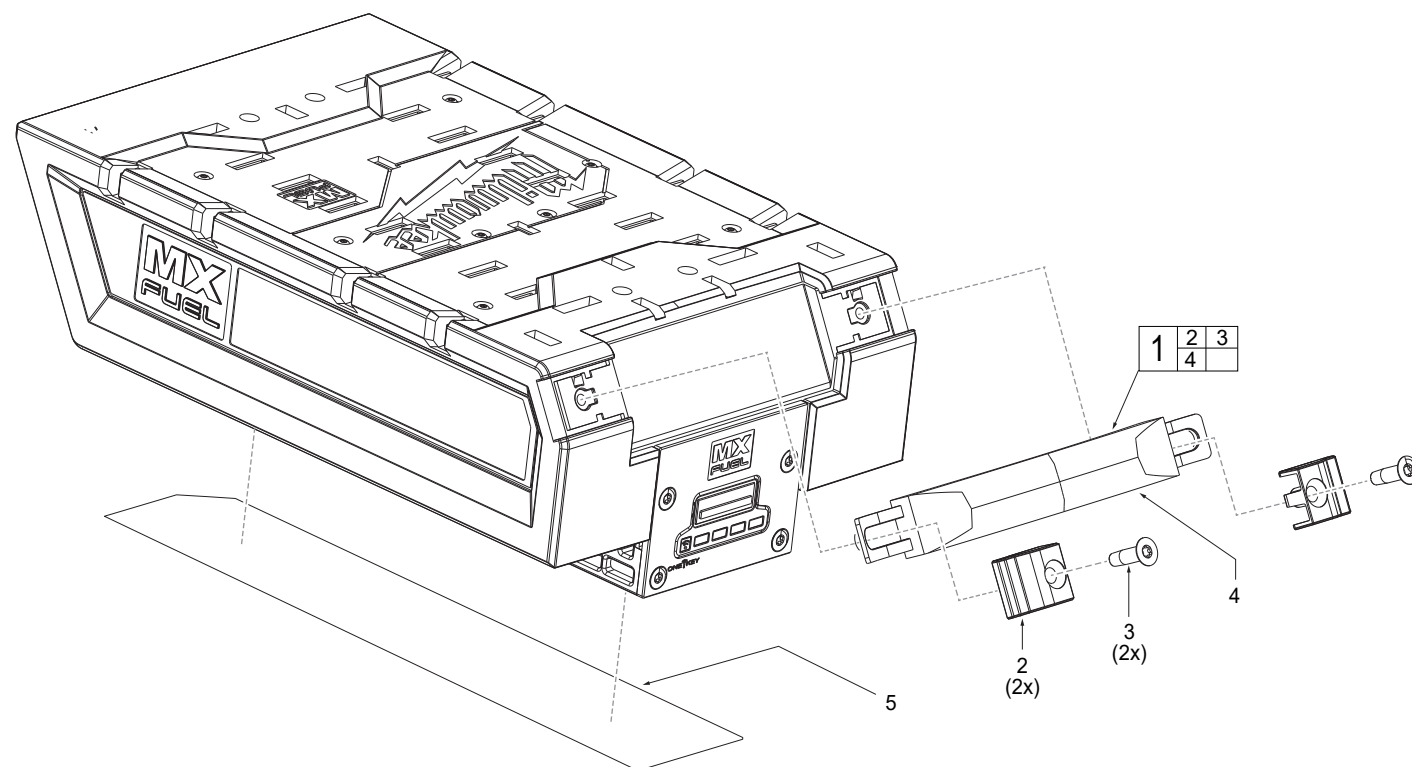


FIG.	PART NO.	DESCRIPTION OF PART	NO. REQ.	FIG.	NOTES
1	14-34-7035	Handle Service Kit	(1)	5	A clean, dry surface is essential for proper performance for any adhesive system. The area intended for application of any adhesive label or nameplate must be prepared by cleaning with isopropyl alcohol. The solvent is to be applied with a clean, lint free applicator and the surface allowed to dry before applying the label or nameplate.
2	-----	Part Latches	(2)		
3	-----	Screws	(2)		
4	-----	Handle	(1)		
5	12-25-9865	Nameplate	(1)		