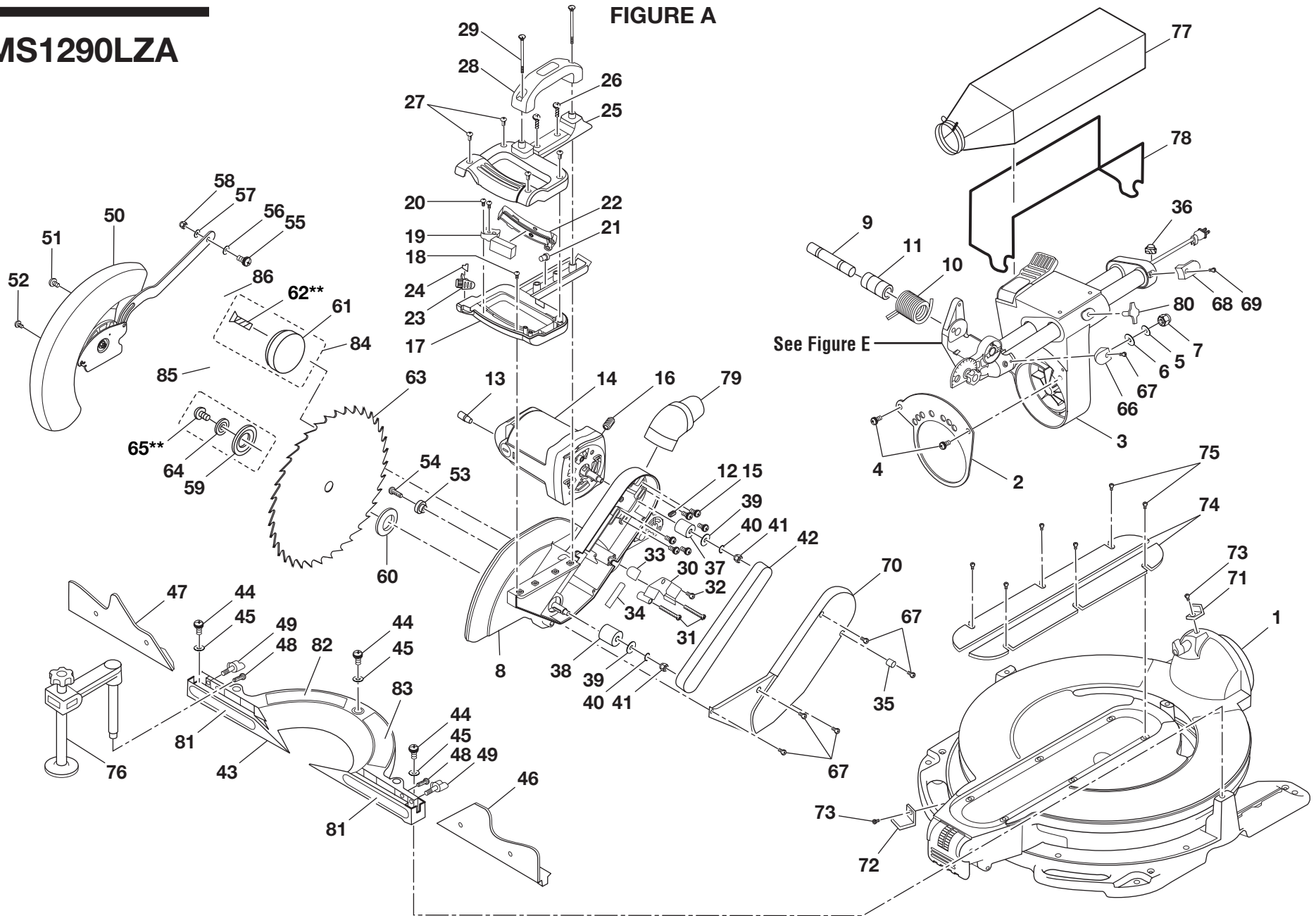


RIDGID

MS1290LZA

FIGURE A





MS1290LZA

The model number will be found on a plate attached to the motor housing. Always mention the model number in all correspondence regarding your **MITER SAW** or when ordering repair parts.

**** Changes Start With Date Code 07/31/07**

PARTS LIST FOR FIGURE A

Key No.	Part Number	Description	Qty.	Key No.	Part Number	Description	Qty.
1	830122	BASE/TABLE ASSEMBLY	1	26	830123	SCREW (M5 x 32 mm, PAN HD.).....	2
2	830008	BEVEL SCALE	1	27	828122	SCREW (M4 x 14 mm, PAN HD.).....	4
3	089100301002	PIVOT ASSEMBLY	1	28	828063	CARRY HANDLE	1
4	830009	SCREW (M6 x 1.0 x 2 mm).....	2	29	830123-1	SCREW (M5 x 75 mm).....	2
5	828117	WASHER.....	1	30	830035	CORD COVER	1
6	819179	SPRING WASHER	1	31	830124	SCREW (M5 x 35 mm, PAN HD.).....	2
7	818656	LOCK NUT (M12).....	1	32	816755-3	SCREW (M5 x 0.8 x 12 mm, PAN HD.).....	1
8	089100301004	ARM GUARD ASSEMBLY	1	33	816725	CORD CLAMP	1
9	823344	ARM PIVOT SHAFT	1	34	830264	CORD SLEEVE	1
10	830131	TORSION SPRING	1	35	830125	CORD CLIP.....	1
11	830111	SPRING SPACER	1	36	830148	STRAIN RELIEF	1
12	828040	SCREW (M6 x 1.0 x 10 mm, SET LOCK)....	1	37	830026	MOTOR PULLEY	1
13	830023	UP STOP PIN	1	38	830033	PINION PULLEY	1
14	830024	MOTOR ASSEMBLY	1	39	821063	WASHER.....	2
15	830025	SCREW (M6 x 16 mm).....	6	40	813303-7	LOCK WASHER (M8).....	2
16	830164	SCREW (M8 x 25 mm, SET LOCK)	1	41	820236-7	HEX NUT (M8 x 1.25 mm)	2
17	830037	LOWER HANDLE.....	1	42	830034	BELT (POLY VEE).....	1
18	813312	SCREW (M4 x 0.7 x 10 mm, PAN HD.).....	1	43	080017005592	LOWER FENCE (INC. KEY NOS. 81-83).....	1
19	089100303004	SWITCH.....	1	44	830129	SCREW (M8 x 1.25 x 20 mm, SOC CAP)	3
20	828122-1	SCREW (M4 x 10 mm, PAN HD.).....	2	45	821063-6	WASHER.....	3
21	803709-1	WIRE CONNECTOR (#12-#18).....	1	46	830005	RIGHT SLIDING FENCE	1
22	828059	SWITCH ACTUATOR.....	1	47	830006	LEFT SLIDING FENCE.....	1
23	828060	LOCK BUTTON	1	48	820244-6	SCREW (M6 x 1.0 x 20 mm, PAN HD.).....	2
24	828061	TORSION SPRING	1	49	830004	FENCE LOCK KNOB	2
25	830039	UPPER HANDLE.....	1				



MS1290LZA

The model number will be found on a plate attached to the motor housing. Always mention the model number in all correspondence regarding your **MITER SAW** or when ordering repair parts.

**** Changes Start With Date Code 07/31/07**

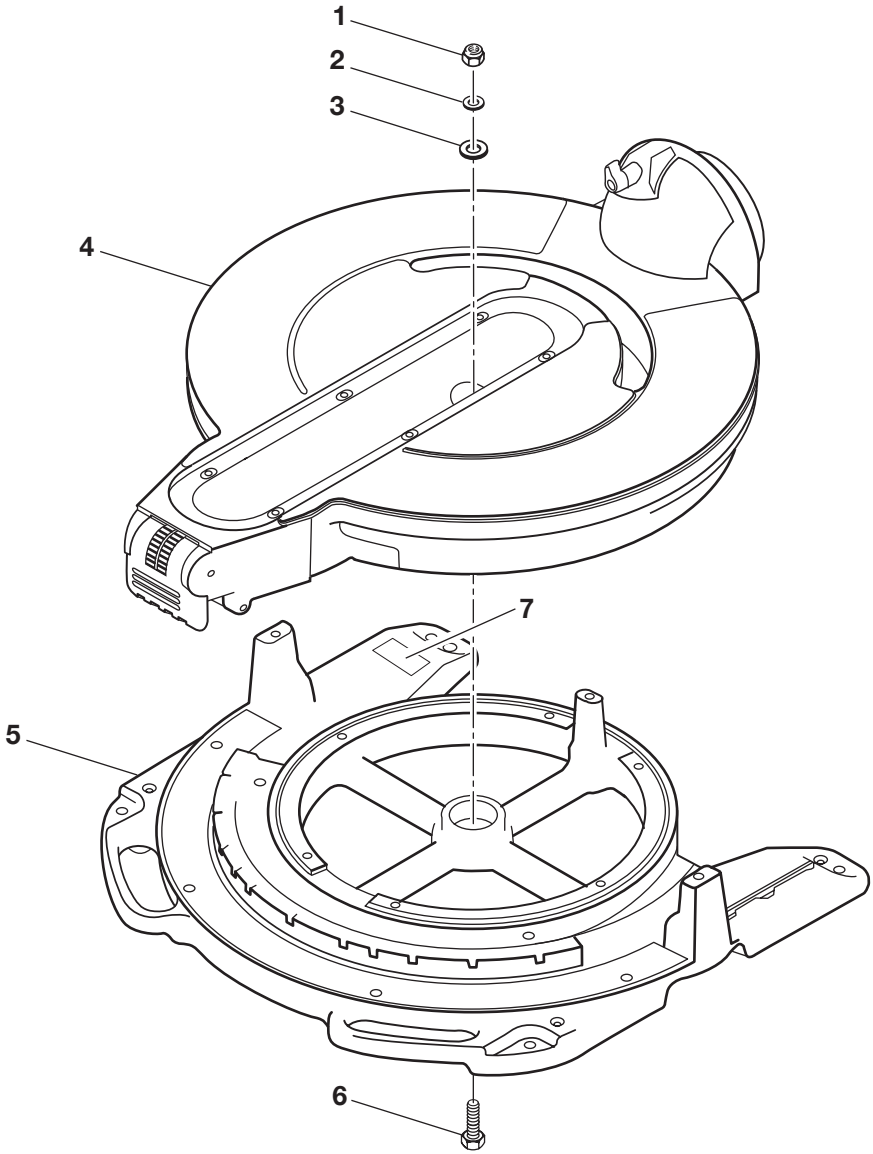
PARTS LIST FOR FIGURE A (CONT.)

Key No.	Part Number	Description	Qty.	Key No.	Part Number	Description	Qty.
50	830040	LOWER GUARD ASM.....	1	70	830036	BELT COVER.....	1
51	821873	SCREW (10-32 x 1/2 in., SHOULDER).....	1	71	829994	BEVEL INDICATOR.....	1
52	020123008	SCREW (10-32 x 5/8 in., PAN HD.).....	1	72	829995	MITER INDICATOR.....	1
53	827498	RUBBER SLEEVE.....	1	73	830130-1	SCREW (M4 x 8 mm, PAN HD.).....	2
54	821878	SCREW (10-32 x 7/8 in., SHOULDER).....	1	74	829989	THROAT PLATE (TABLE INSERT).....	2
55	821875	SCREW (M6 x 20 mm, SHOULDER).....	1	75	816755-10	SCREW (M5 x 0.8 x 8 mm, PAN HD.).....	6
56	821063-1	WASHER.....	1	76	830079	CLAMP ASSEMBLY.....	1
57	820238-5	WASHER.....	1	77	830077	DUST BAG ASSEMBLY.....	1
58	817449-1	LOCK NUT (M6 x 1.0).....	1	78	830076	DUST BAG FRAME.....	1
59	830524	BLADE COLLAR (OUTER).....	1	79	830078	DUST ELBOW.....	1
60	830526	BLADE COLLAR (INNER).....	1	80	830015	SLIDE LOCK KNOB.....	1
61	089100300724	ADJUSTABLE LASER GUIDE.....	1	81	867226000	FENCE LABEL.....	2
62	089100300731	LASER BOLT (M10 x 26 mm).....	1	82	867226010	FENCE WARNING LABEL (RIGHT).....	1
	089100206004	** LASER BOLT (M10 x 35.5 mm).....	1	83	867226004	FENCE WARNING LABEL (LEFT).....	1
63	830000	BLADE.....	1	84	089100303002	ADJUSTABLE LASER KIT (INC. KEY NOS. 61-62 AND 85-88).....	1
64	830523	BLADE WASHER.....	1	85	089100300726	HEX KEY (1/16 in.).....	1
65	830525	BLADE SCREW (M10 x 20 mm).....	1	86	089100300727	WARNING LABEL.....	1
	089100206003	** BLADE SCREW (M10 x 28.5 mm).....	1	87	089100300728	INSTRUCTION SHEET (NOT SHOWN).....	1
66	830016	FRONT CORD WRAP.....	1	88	089100300729	CARD (NOT SHOWN).....	1
67	830124-2	SCREW (M5 x 14 mm, PAN HD.).....	6		987000017	OPERATOR'S MANUAL	
68	830017	REAR CORD WRAP.....	1		07-17-08		
69	830124-3	SCREW (M5 x 20 mm, PAN HD.).....	1		(REV:04)		

RIDGID

MS1290LZA

FIGURE B





MS1290LZA

The model number will be found on a plate attached to the motor housing. Always mention the model number in all correspondence regarding your **MITER SAW** or when ordering repair parts.

**** Changes Start With Date Code 07/31/07**

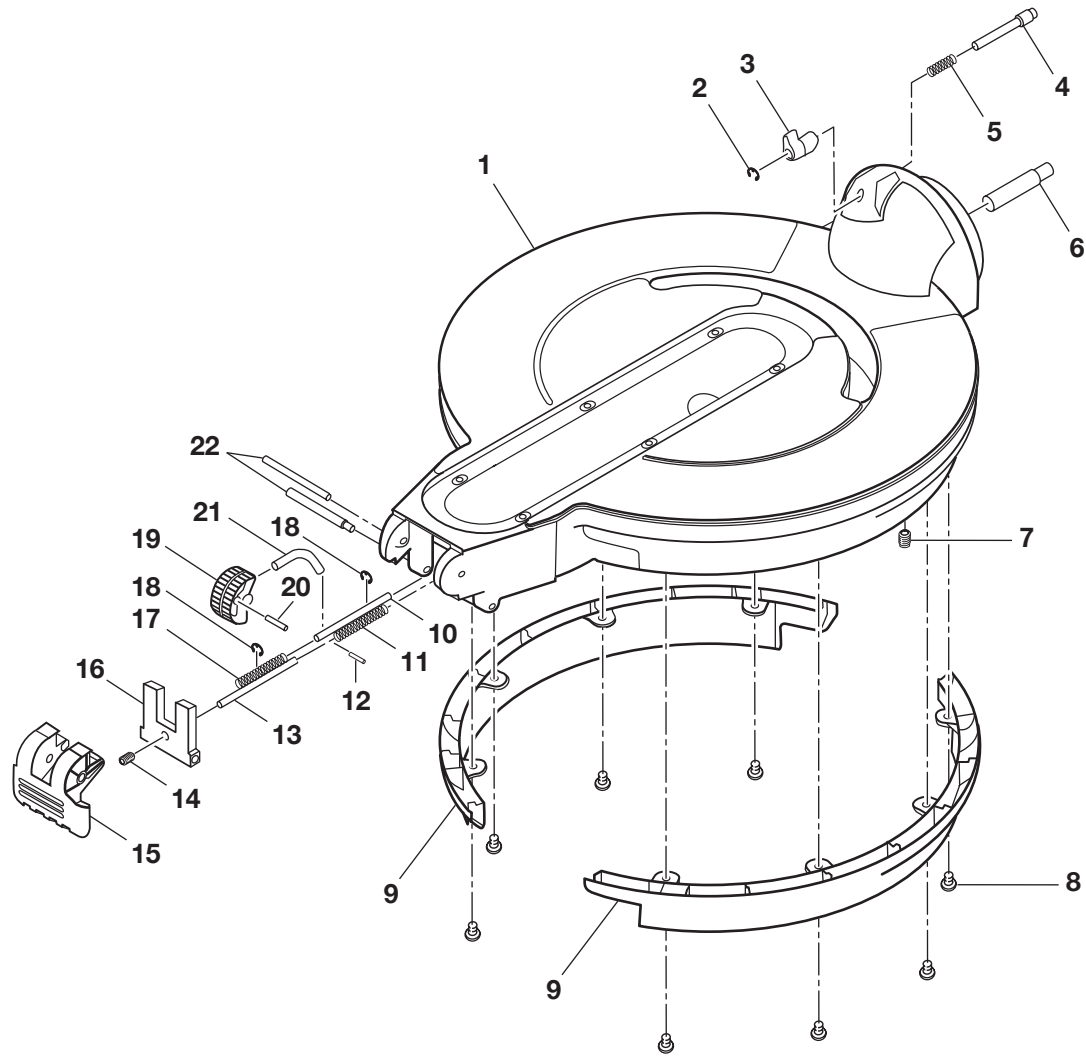
PARTS LIST FOR FIGURE B

Key No.	Part Number	Description	Qty.
1	818656	LOCK NUT (M12).....	1
2	830137	WASHER.....	1
3	830138	WASHER.....	1
4	829981	TABLE ASSEMBLY	1
5	830136	BASE ASSEMBLY.....	1
6	822072	SCREW (M12 x 1.75 x 40 mm, HEX HD.)....	1
7	089100303900	DATA LABEL	1

RIDGID

MS1290LZA

FIGURE C





MS1290LZA

The model number will be found on a plate attached to the motor housing. Always mention the model number in all correspondence regarding your **MITER SAW** or when ordering repair parts.

**** Changes Start With Date Code 07/31/07**

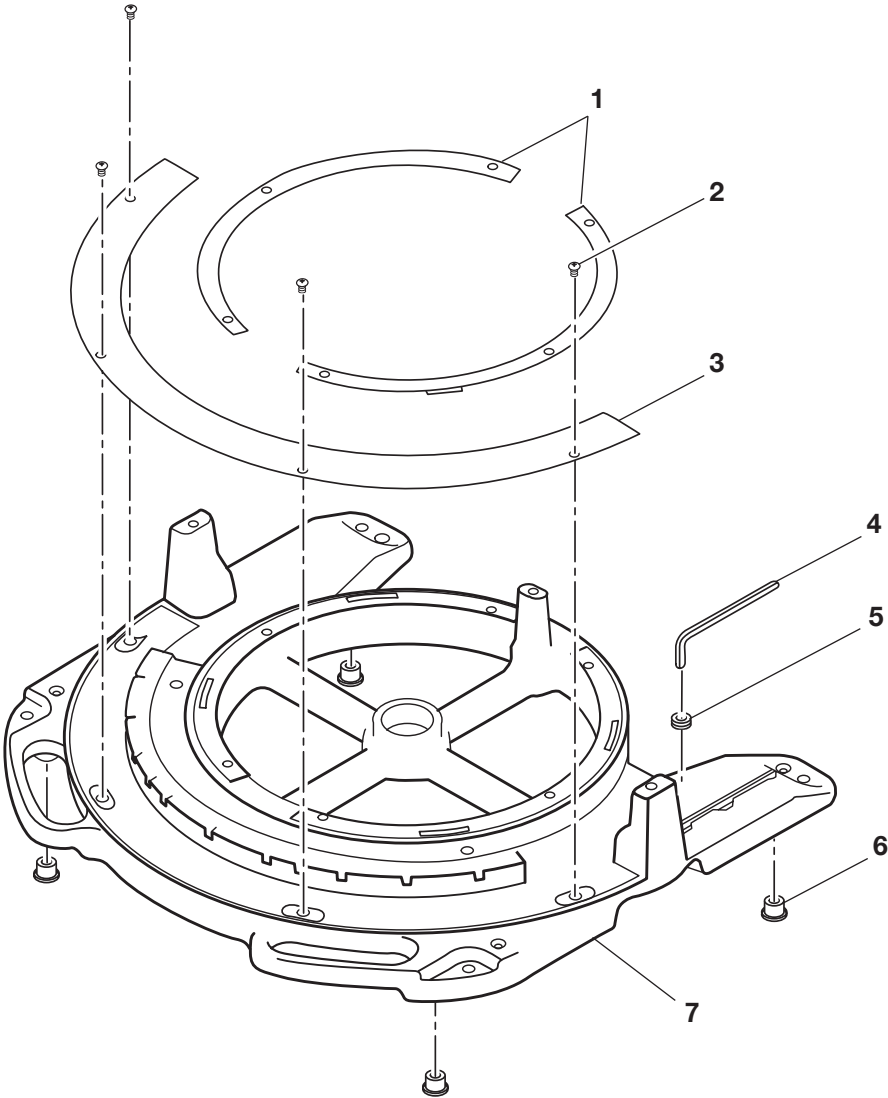
PARTS LIST FOR FIGURE C

Key No.	Part Number	Description	Qty.
1	830280	TABLE ASSEMBLY	1
2	829984-1	RETAINING RING	1
3	829992	BEVEL INDEX LEVER	1
4	829990	BEVEL INDEX PIN	1
5	829991	SPRING	1
6	028307009	PIVOT SHAFT	1
7	827449-1	SCREW (M8 x 1.25 x 10 mm, SET LOCK).....	1
8	820244-2	SCREW (M6 x 1.0 x 10 mm, PAN HD.).....	8
9	829982	TABLE SKIRT.....	2
10	830044	MITER INDEX PIN.....	1
11	829983	SPRING	1
12	830141	ROLL PIN.....	1
13	829985	MITER LOCK PIN	1
14	827449	SCREW (M8 x 1.25 x 16 mm, SOC SET LOCK).....	1
15	829988	MITER LOCK LEVER	1
16	829986	MITER LOCK PLATE.....	1
17	829983	SPRING	1
18	829984	RETAINING RING	2
19	830046	MITER INDEX WHEEL	1
20	830140	ROLL PIN.....	1
21	830045	MITER INDEX LINK.....	1
22	829987	SCREW (M6 x 8 x 91 mm, SHOULDER)	2

RIDGID

MS1290LZA

FIGURE D





MS1290LZA

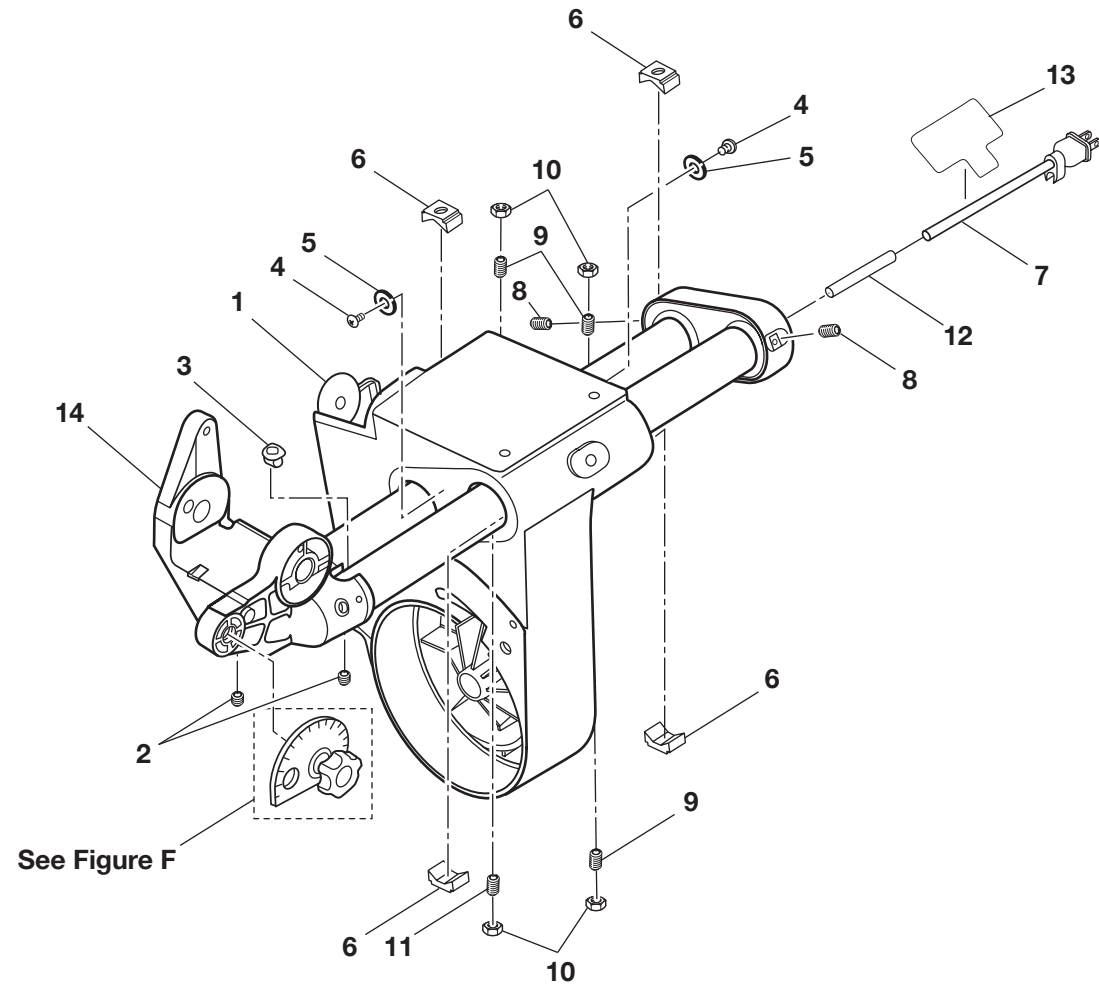
The model number will be found on a plate attached to the motor housing. Always mention the model number in all correspondence regarding your **MITER SAW** or when ordering repair parts.

**** Changes Start With Date Code 07/31/07**

PARTS LIST FOR FIGURE D

Key No.	Part Number	Description	Qty.
1	829997	TABLE SHIM	2
2	830166	SCREW (M5 x 0.8 x 10 mm, FLAT).....	4
3	829999	MITER SCALE	1
4	823492	HEX KEY (1/4 in. x 120 mm).....	1
5	823335	WRENCH GROMMET	1
6	829998	RUBBER FOOT	4
7	829996	BASE	1

FIGURE E





MS1290LZA

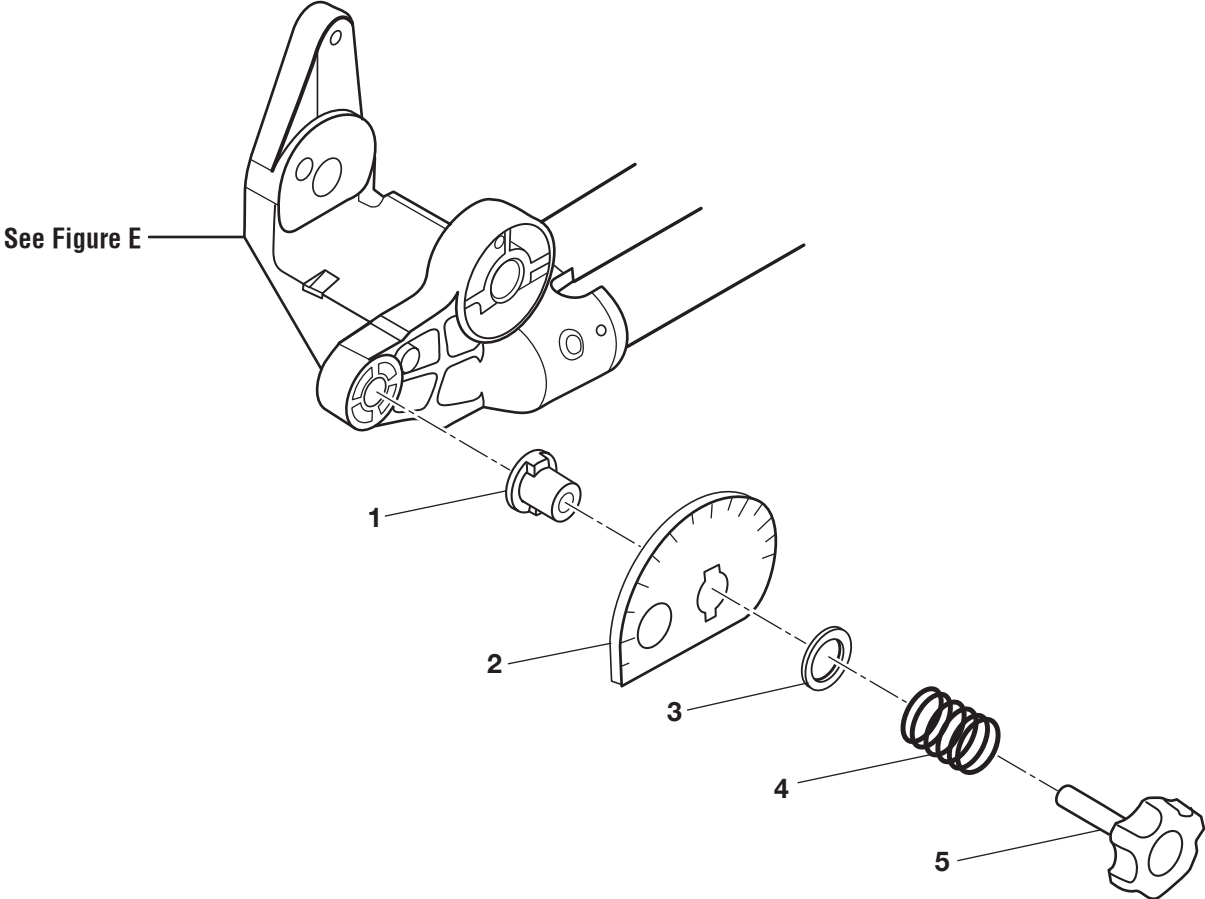
The model number will be found on a plate attached to the motor housing. Always mention the model number in all correspondence regarding your **MITER SAW** or when ordering repair parts.

**** Changes Start With Date Code 07/31/07**

PARTS LIST FOR FIGURE E

Key No.	Part Number	Description	Qty.
1	830262	PIVOT ASSEMBLY ONLY	1
2	830146	SCREW (M8 x 1.25 x 6 mm, SET LOCK)....	2
3	830147	CORD GUARD.....	1
4	830145	SCREW (M5 SHOULDER)	2
5	830053	RUBBER WASHER.....	2
6	830048	GLIDE TUBE	4
7	830038	CORD W/PLUG	1
8	830146-1	SCREW (M8 x 1.25 x 14 mm, SET LOCK)...	2
9	830144-1	SCREW (M8 x 1.25 x 20 mm, SET LOCK)...	3
10	824026-7	HEX NUT (M8 x 1.25 mm)	4
11	830144	SCREW (M8 x 1.25 x 25 mm, SET LOCK)...	1
12	830264-1	CORD SLEEVE	1
13	867226014	WARNING LABEL (FR/SP).....	1
14	089100301001	PIVOT BRACKET	1

FIGURE F





MS1290LZA

The model number will be found on a plate attached to the motor housing. Always mention the model number in all correspondence regarding your **MITER SAW** or when ordering repair parts.

**** Changes Start With Date Code 07/31/07**

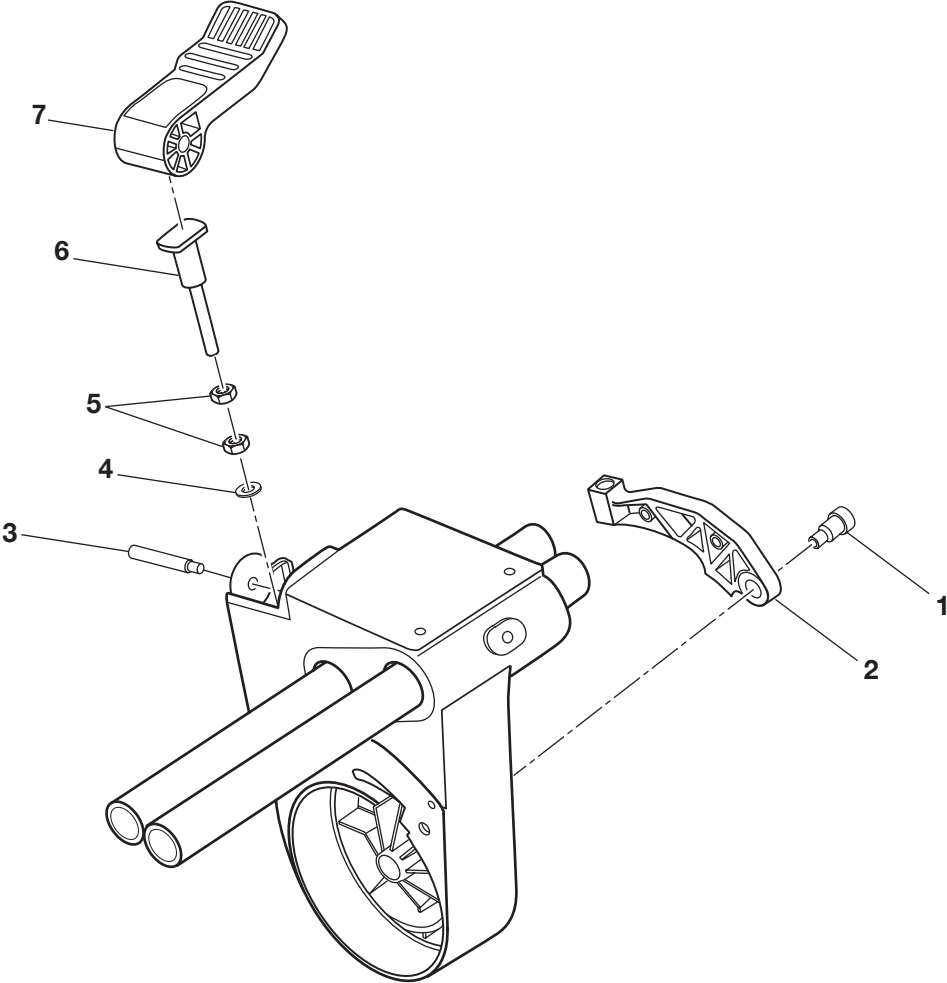
PARTS LIST FOR FIGURE F

Key No.	Part Number	Description	Qty.
1	830018	DOWN STOP FLANGE BEARING	1
2	830019	ECCENTRIC PLATE.....	1
3	830149	WASHER.....	1
4	830020	SPRING	1
5	830021	DOWN STOP KNOB.....	1

RIDGID

MS1290LZA

FIGURE G





MS1290LZA

The model number will be found on a plate attached to the motor housing. Always mention the model number in all correspondence regarding your **MITER SAW** or when ordering repair parts.

**** Changes Start With Date Code 07/31/07**

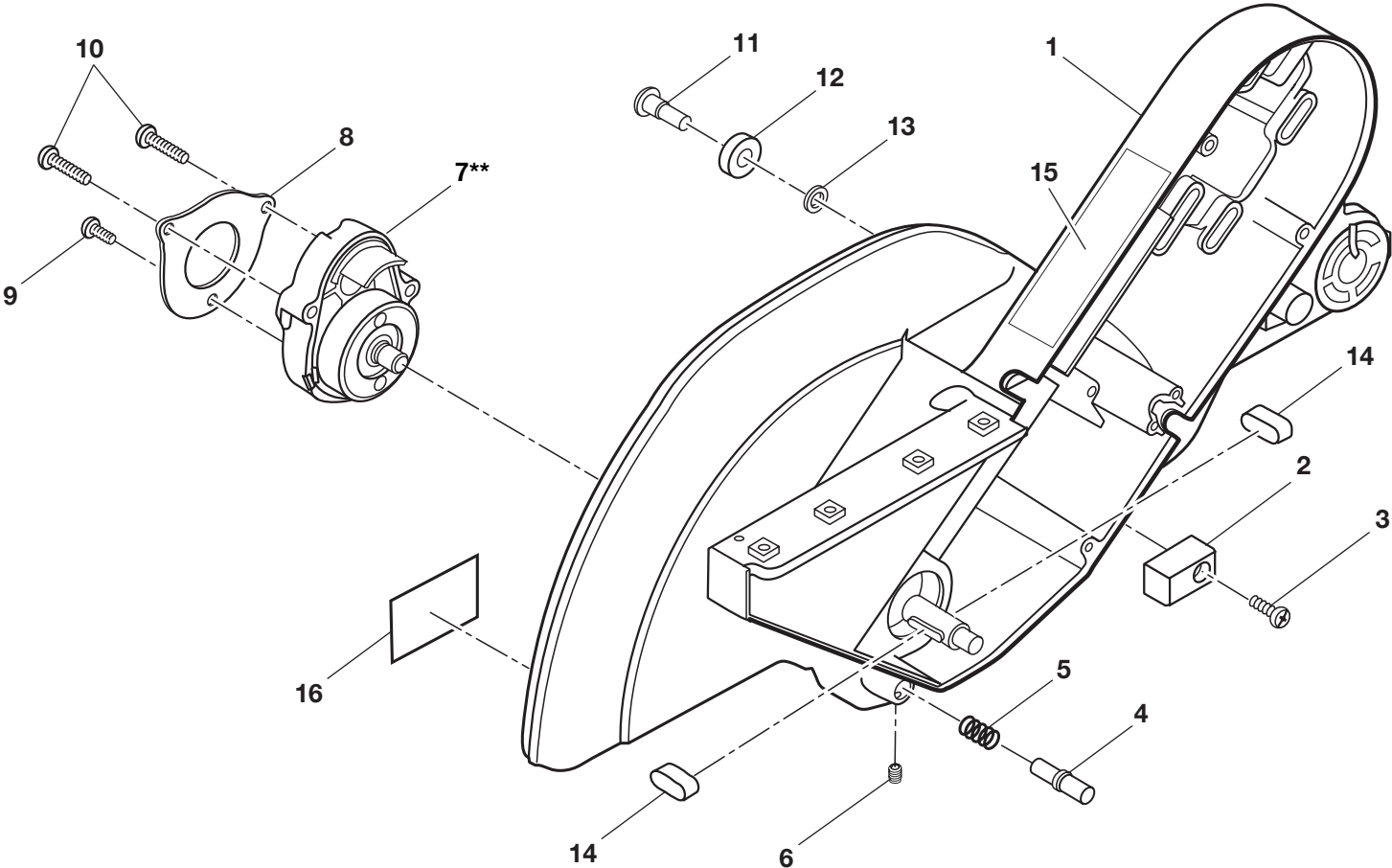
PARTS LIST FOR FIGURE G

Key No.	Part Number	Description	Qty.
1	830151	SCREW (M8, SHOULDER)	1
2	830010	BEVEL CLAMP	1
3	830011	SCREW (M6 x 1 x 58.5 mm, SHOULDER)	1
4	821063-7	WASHER.....	1
5	820236-7	HEX NUT (M8 x 1.25 mm)	2
6	830012	BEVEL LOCK PLUNGER.....	1
7	830013	BEVEL LOCK LEVER.....	1

RIDGID

MS1290LZA

FIGURE H





MS1290LZA

The model number will be found on a plate attached to the motor housing. Always mention the model number in all correspondence regarding your **MITER SAW** or when ordering repair parts.

**** Changes Start With Date Code 07/31/07**

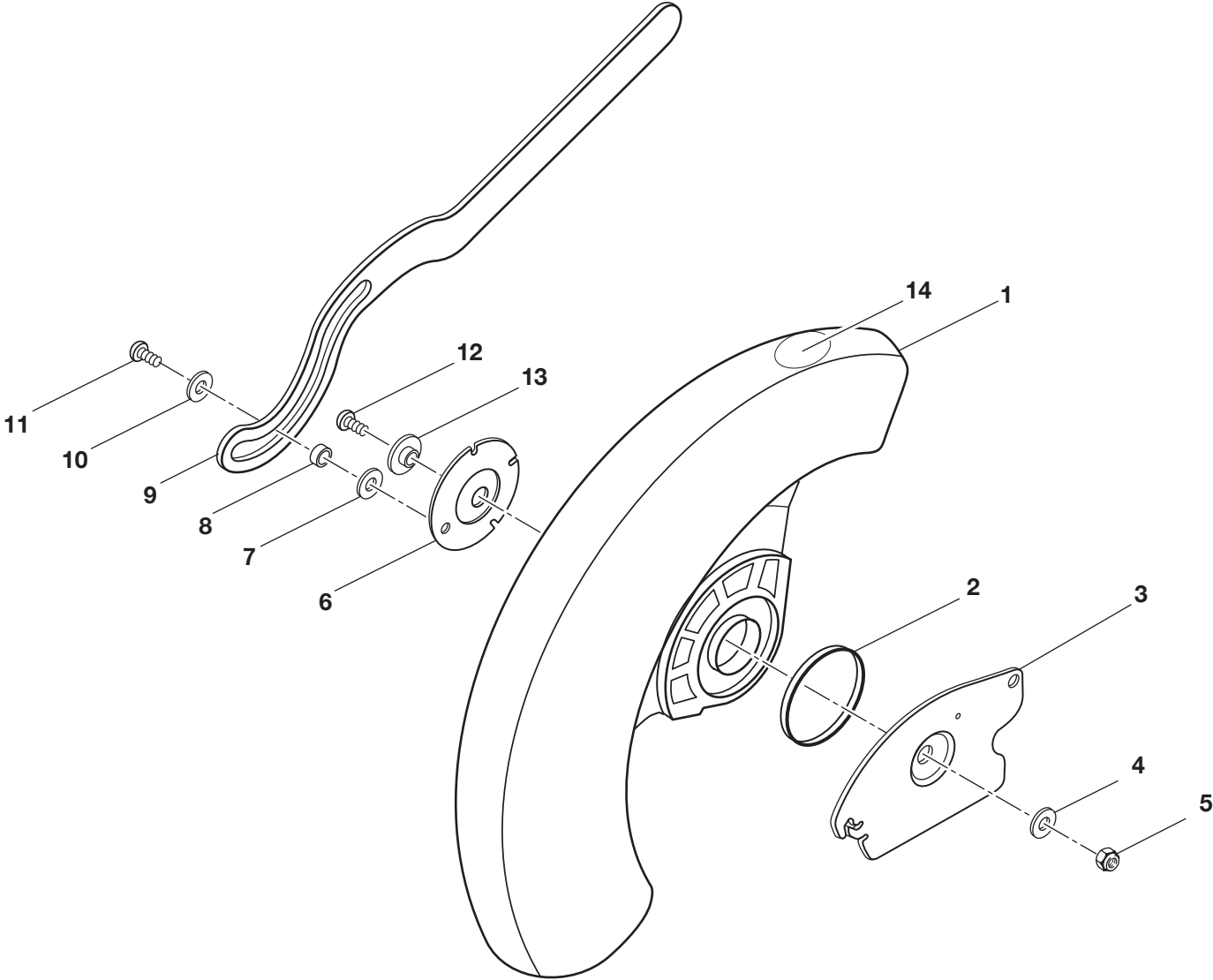
PARTS LIST FOR FIGURE H

Key No.	Part Number	Description	Qty.
1	089100301003	ARM GUARD ASSEMBLY	1
2	823360	LOWER GUARD BUMPER	1
3	816755-6	SCREW (M5 x 0.8 x 16 mm, PAN HD.).....	1
4	830029	ARBOR LOCK PIN.....	1
5	830030	SPRING	1
6	830155	SCREW (M4 x 5 mm, SET LOCK)	1
7	830031-2	ARBOR ASSEMBLY.....	1
	089100303001	** ARBOR ASSEMBLY.....	1
8	830032	BEARING PLATE RETAINER	1
9	830154-1	SCREW (M5 x 12 mm, PAN HD.).....	1
10	830154	SCREW (M5 x 25 mm, PAN HD.).....	2
11	821875-1	SCREW (M6 x 1.0 x 14 mm, SHOULDER) ..	1
12	821862	BEARING GUIDE	1
13	820238-2	WASHER.....	1
14	830027	KEY.....	2
15	867226003	OPERATION LABEL.....	1
16	867216027	WARNING LABEL (UPPER GUARD)	1

RIDGID

MS1290LZA

FIGURE I





MS1290LZA

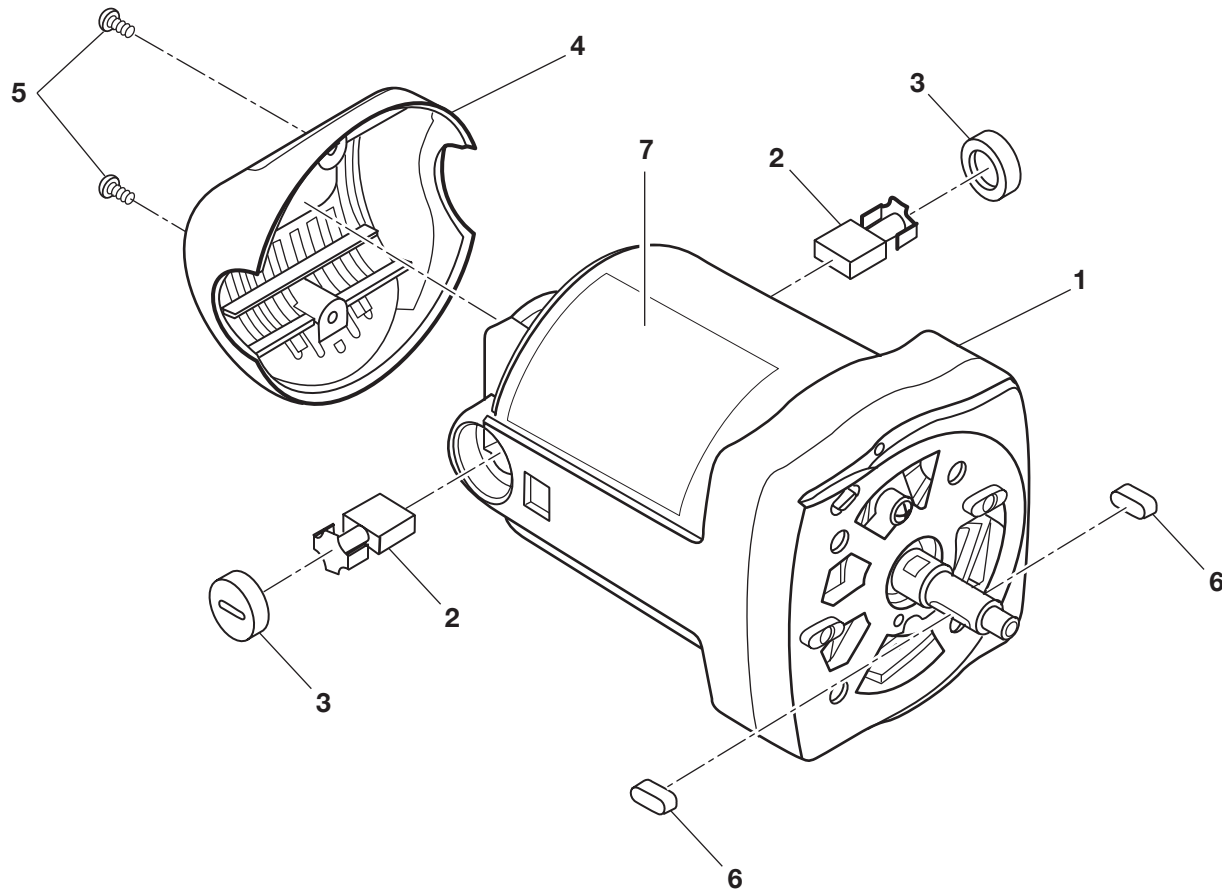
The model number will be found on a plate attached to the motor housing. Always mention the model number in all correspondence regarding your **MITER SAW** or when ordering repair parts.

**** Changes Start With Date Code 07/31/07**

PARTS LIST FOR FIGURE I

Key No.	Part Number	Description	Qty.
1	830530	LOWER GUARD	1
2	816677	GUARD SPRING.....	1
3	830529	LOWER GUARD PIVOT	1
4	820238-8	WASHER.....	1
5	817449-1	LOCK NUT (M6 x 1.0).....	1
6	826879	GUARD RETAINER	1
7	820732-2	WASHER.....	1
8	820725-01	SPACER.....	1
9	830041	ACTUATOR LINK	1
10	820732-1	WASHER.....	1
11	820724	SCREW (M5, SHOULDER)	1
12	828142	SCREW (M6 x 1.0 x 13 mm, FLAT HD.).....	1
13	827409	BEARING RETAINER	1
14	867227001	NO HANDS WARNING LABEL	1

FIGURE J



⚠ WARNING: The assembly shown represents an important part of the Double Insulated System. To avoid the possibility of alteration or damage to the System, service should be performed by your nearest authorized service center.



MS1290LZA

The model number will be found on a plate attached to the motor housing. Always mention the model number in all correspondence regarding your **MITER SAW** or when ordering repair parts.

**** Changes Start With Date Code 07/31/07**

PARTS LIST FOR FIGURE J

Key No.	Part Number	Description	Qty.
1	830253	MOTOR.....	1
2	816768	BRUSH	2
3	830250	BRUSH COVER	2
4	828064	REAR MOTOR COVER.....	1
5	828122-1	SCREW (M4 x 10 mm, PAN HD).....	2
6	830027	KEY.....	2
7	867226013	WARNING LABEL (ENG.)	1