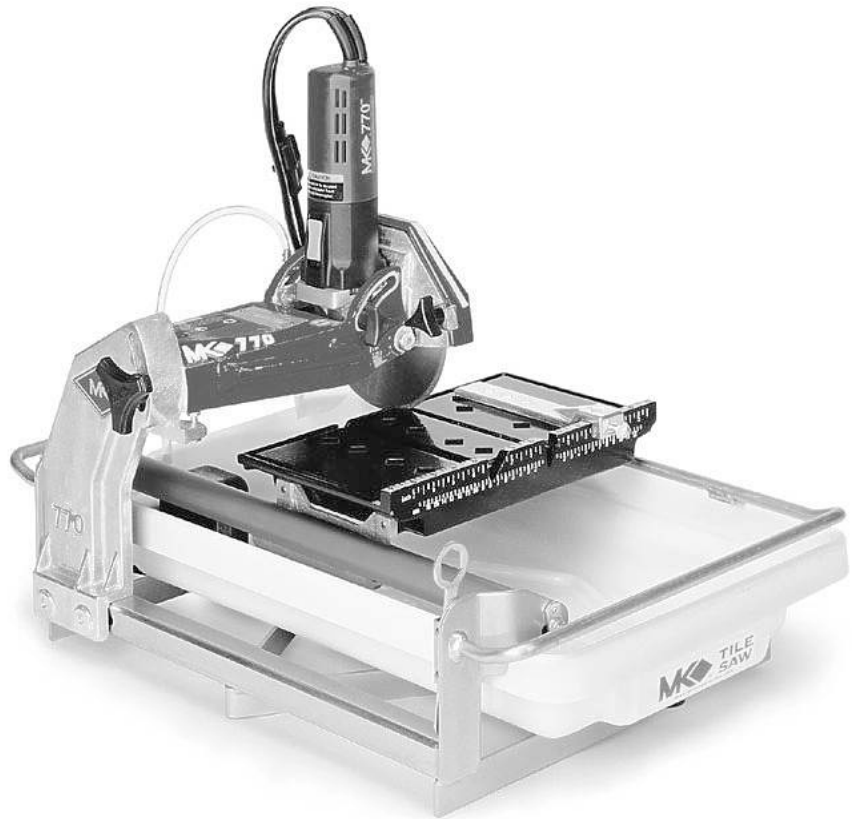




MK-770 SERIES

**TILE SAW
OWNER'S MANUAL &
OPERATING INSTRUCTIONS**



CAUTION:
Read all safety and
operating instructions
before using this
equipment

Enter the Serial Number of your new saw in the
space below. The Serial Number is located on the
rear of the Cutting Head.

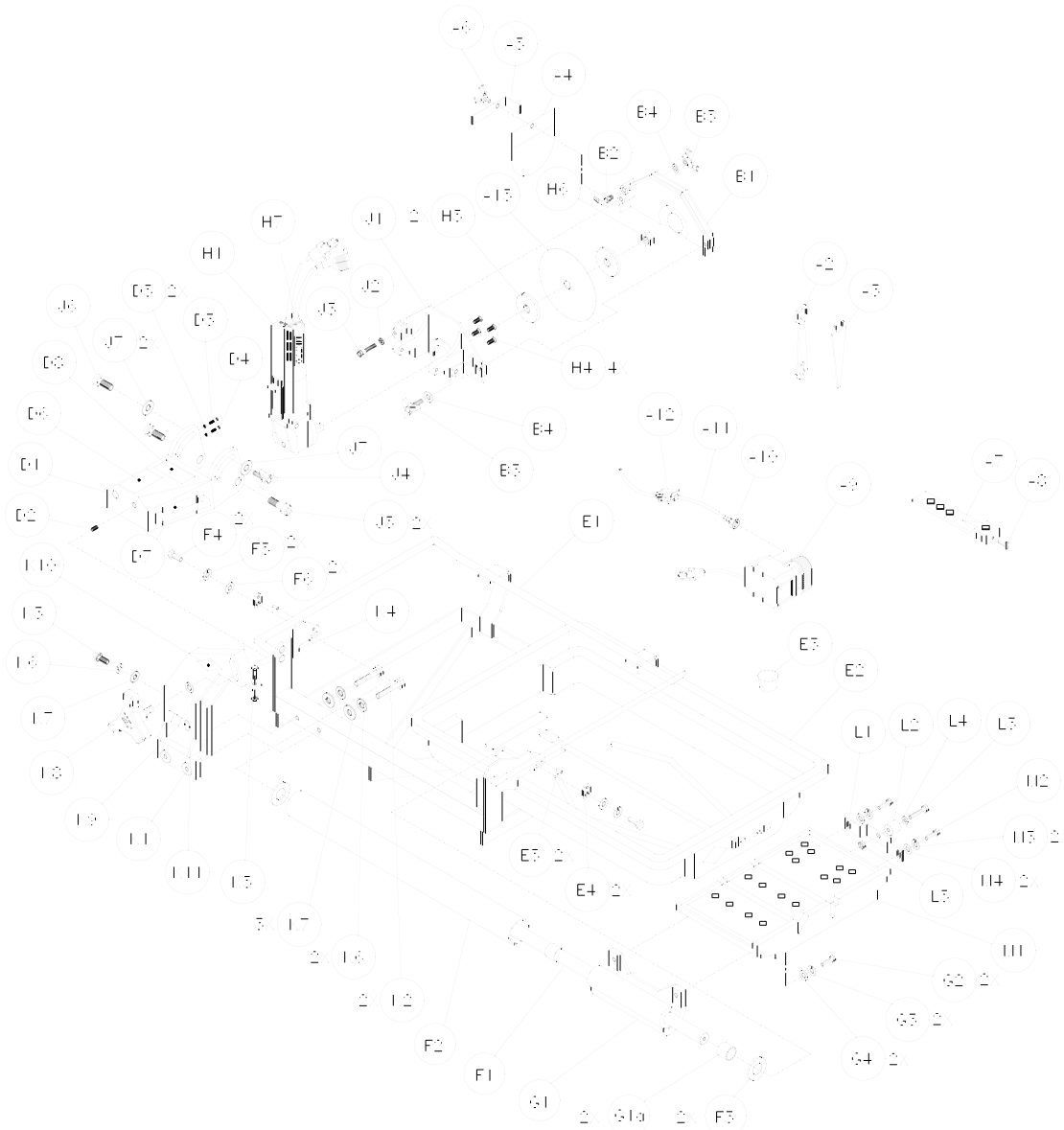
SERIAL NUMBER:

NOTE:

For your (1) one year warranty to be effective,
complete the warranty card (including the Serial
Number and mail it in as soon as possible.

EXPLODED VIEW AND PARTS LIST

EXPLODED VIEW:



EXPLODED VIEW AND PARTS LIST

PARTS LIST:





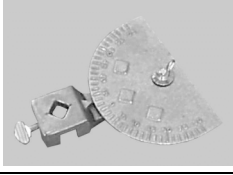
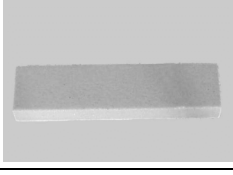


| Item | Description | Qty | Part # |
|------------------------------|---------------------------------------|--------|-----------|
| A Accessories | | | n/a |
| A1 | Carton, Accessory pack, 770 | 1 | 153498 |
| A2 | Wrench, Blade Nut, 15/16 Boxed End | 1 | 134684 |
| A3 | Wrench, Blade Shaft, 11/16 Open End | 1 | 153450 |
| A4 | Curtain, Splash | 1 | 134841 |
| A5 | Bracket, Splash Curtain | 1 | 155901 |
| A6 | Wing-screw, 1/4-20 x 1/2 | 1 | 151888 |
| A7 | Casting, Rip Guide (comp) | 1 | 134551 |
| A8 | Screw, 1/4-20 X 3/4 Thumb | 1 | 150991 |
| A9 | Pump, 120v Water | 1 | 151271 |
| A10 | Fitting, Plastic, 1/4 FNPT x 1/4 BARB | 1 | 128397 |
| A11 | Hose, Vinyl, 1/4 ID | 2 1/2' | 132951 |
| A12 | Clamp, Flow, 1/4-1/2 | 1 | 154394 |
| A13 | Owner's Manual, Water Pump, G-150A | 1 | 155745 |
| A14 | Plug, Nema 5-15P 15a/120v | 1 | 150869 |
| A15 | Blade, 7 x 060 x 5/8, MK-100 (saws) | 1 | 153441 |
| A16 | Owner's Manual, 770 | 1 | 153618 |
| A17 | Warranty Card | 1 | 155037 |
| B Blade Guard | | | 154811-MK |
| B1 | Casting, Guard, 7" Blade, (comp) | 1 | 154811 |
| B2 | Elbow, 1/8 MNPT x 1/4" Barb 90° Brass | 1 | 154652 |
| B3 | Knob, Davies | 1 | 151681 |
| B4 | Washer, 5/16 SAE Flat | 2 | 151754 |
| B5 | Wing-nut, 5/16-18 Nylock | 1 | 151746 |
| D Cutting Head | | | n/a |
| D1 | Casting, Cutting Head (comp) | 1 | 151733 |
| D2 | Helicoil, 3/8-16 | 1 | 151880 |
| D3 | Screw, Slotted Pan Hd 10-32 x 1/4" | 1 | 151750 |
| D4 | Screw, Slotted Pan Hd 10-32 x 1" | 1 | 151751 |
| D5 | Nut, Hex 10-32 | 2 | 151749 |
| D6 | Label, Warning, Safety | 1 | 155806 |
| D7 | Label, MK-USA | 1 | 154334 |
| D8 | Tag, Serial Number MK-770 | 1 | 156546 |
| E Frame | | | n/a |
| E1 | Frame | 1 | 153322 |
| E2 | Pan, Plastic | 1 | 151736 |
| E3 | Plug, Water Drain | 1 | 153439 |
| E4 | Plate, Adjustment | 2 | 151758 |
| E5 | Pin, Rolled | 2 | 151783 |
| F Guide Bar, 5/8 Dia. | | | 151739-MK |
| F1 | Bar, Guide, 5/8 Dia. | 1 | 151739 |
| F2 | Cover, 5/8 Guide Bar | 1 | 151740 |
| F3 | Spacer, 5/8 Guide Bar Cover | 2 | 151755 |
| F4 | Screw, 5/16-18 x 1 Hex Head Cap | 2 | 151743 |
| F5 | Washer, 5/16 Split Lock | 2 | 151747 |
| F6 | Washer, 5/16 SAE Flat | 2 | 151754 |

EXPLODED VIEW AND PARTS LIST

| Item | Description | Qty | Part # |
|----------|--|-----|-----------|
| G | Linear Bearing | | 151737-MK |
| G1 | Casting, Bearing, Linear (comp) | 1 | 151737 |
| G1a | Bearing, Multi-Lube | 2 | 151781 |
| G2 | Screw, 5/16-18 x 1 Hex Head Cap | 2 | 151743 |
| G3 | Washer, 5/16 Split Lock | 2 | 151747 |
| G4 | Washer, 5/16 SAE Flat | 2 | 151754 |
| | | | |
| H | 120v Motor | 1 | n/a |
| H1 | Motor, 120v/7.4A | 1 | 156428-R |
| H1A | Motor, 240v/2.7A, 770 | 1 | 157054 |
| H2 | Label, Caution, GFCl, 1 X 2 1/8 | 1 | 155678 |
| H3 | Label, Caution, Receptacle, 1 X 2 1/8 | 1 | 154822 |
| H4 | Screw, 10-32 X 5/8 Flat Head Phillips Cap, | 4 | 157554 |
| H5 | Flange, Blade | 2 | 135830 |
| H6 | Nut, 5/8-18 UNF | 1 | 135848 |
| H7 | Label, Motor MK-770 | 1 | 156691 |
| H8 | Plug, CEE 7/7 16a 240v | 1 | 153687 |
| H9 | Plug, 340v/10A Australia | 1 | 156267 |
| | | | |
| J | Motor Mount | | n/a |
| J1 | Casting, Motor Mount, (comp) | 1 | 153904 |
| J2 | Washer, 5/16 Split Lock | 1 | 151747 |
| J3 | Screw, 5/16-18 x 2 1/2 Hex Head Cap, Full Thread | 1 | 151748 |
| J4 | Knob, Davies | 1 | 151681 |
| J5 | Bolt, Shoulder, Soc. Hd 1/2 x 1/2" | 2 | 151753 |
| J6 | Bolt, Shoulder, Soc. Hd 5/16-18 x 5/8 | 1 | 152137 |
| J7 | Washer, Flat SAE 5/16" | 2 | 151754 |
| | | | |
| K | Post | | n/a |
| K1 | Casting, Post (comp) | 1 | 153516 |
| K2 | Screw, 3/8-16 x 2", Hex Head | 2 | 153485 |
| K3 | Screw, 3/8-16 x 1", Hex Head | 1 | 152507 |
| K4 | Screw, 1/4-20 x 1", Hex Head | 1 | 152676 |
| K5 | Nut, 1/4-20, Hex | 1 | 151893 |
| K6 | Washer, Lock, 3/8 | 3 | 150925 |
| K7 | Washer, Flat SAE 3/8 | 3 | 150923 |
| K8 | Knob, Tri-Plastic | 1 | 156770-04 |
| K9 | Label, 770 | 1 | 155395 |
| K10 | Label, MK-Diamond Logo | 1 | 151969 |
| | | | |
| L | Roller Wheel | | 151756 |
| L1 | Bracket, Roller Wheel | 1 | 154021 |
| L2 | Wheel, Roller | 1 | 151799 |
| L3 | Screw, 1/4-20 x 1 1/2 Hex Head Cap | 1 | 151914 |
| L4 | Washer, 1/4 SAE Flat | 1 | 151915 |
| L5 | Nut, 1/4-20 Hex | 1 | 151893 |
| | | | |
| M | Table, 770 | | n/a |
| M1 | Casting, Table, comp | 1 | 151738 |
| M2 | Screw, 5/16-18 x 1 Hex Head Cap | 2 | 151743 |
| M3 | Washer, 5/16 Split Lock | 2 | 151747 |
| M4 | Washer, 5/16 SAE Flat | 2 | 151754 |

ACCESSORIES

ACCESSORIES:

| ITEM | NUMBER | DESCRIPTION | |
|------|--------|----------------------------------|---|
| 1. | 139295 | MK-200, 7 x 5/8 Arbor |  |
| 2. | 139311 | MK-215, 7 x 5/8 Arbor |  |
| 3. | 153293 | MK-315, 7 x 5/8 Arbor |  |
| 4. | 134577 | Dual 45° Flat Angle Guide |  |
| 5. | 134569 | 90° Protractor |  |
| 6. | 152792 | Dressing Stone |  |
| 8. | 152610 | Ground Fault Circuit Interrupter |  |
| 9. | 151889 | Universal Stand |  |