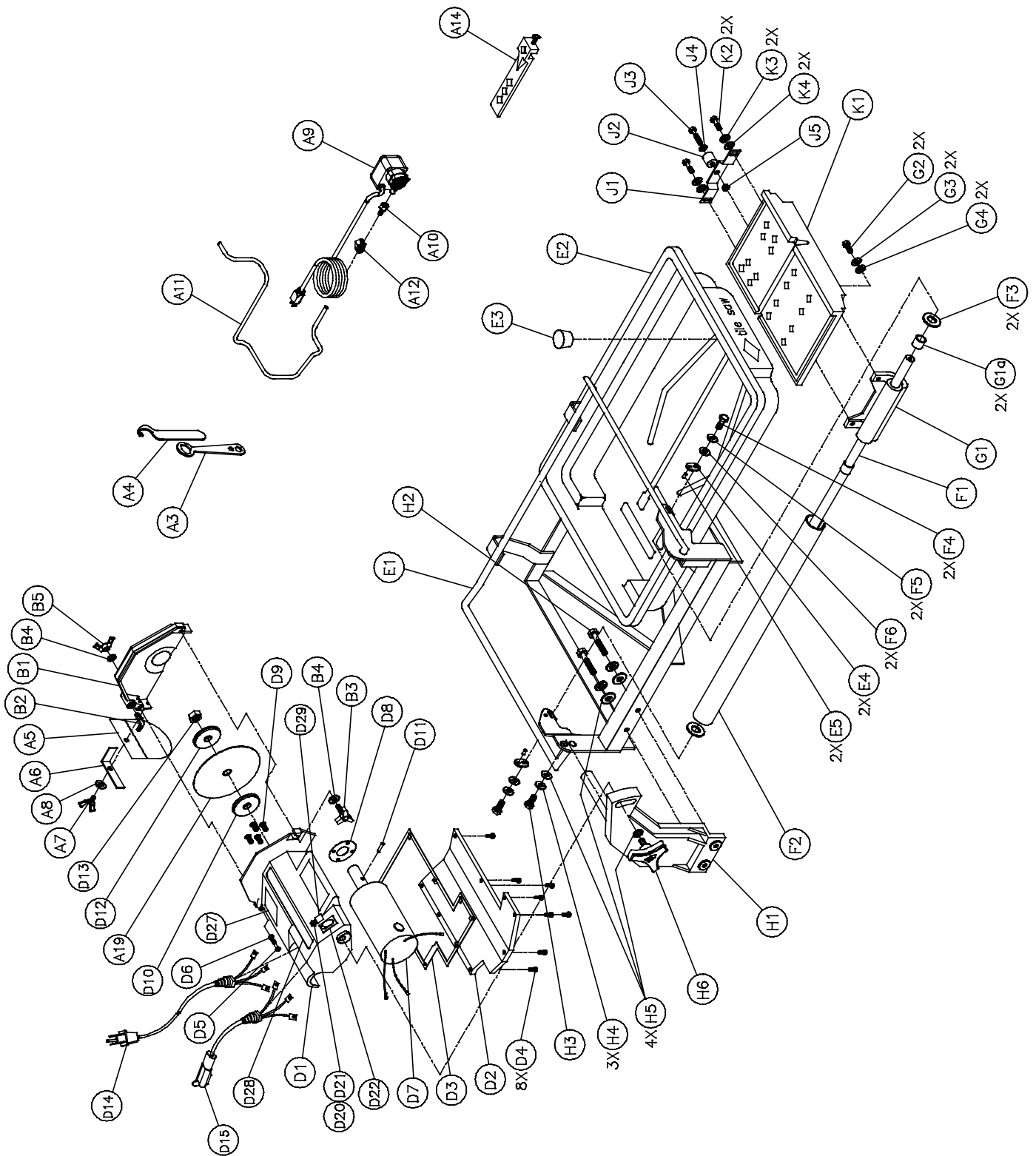


# MK-660 TILE SAW OWNERS MANUAL PARTS LIST & OPERATING INSTRUCTIONS



Revision 101	09.2010
Manual Part# 153461	

**Caution:** Read all safety and operating instructions before using this equipment. This parts list **MUST** accompany the equipment at all times.



ITEM	DESCRIPTION	QTY	PART #
A	Accessories	1	n/a
A1	Carton, Accessory Pack, 660	1	153498
A3	Wrench, 15/16 Closed End	1	134684
A4	Wrench, Spanner, 660	1	154362
A5	Curtain, Splash	1	134841
A6	Bracket, Splash Curtain	1	152571
A7	Wing-screw, 1/4-20 x 1/2	1	151888
A8	Washer, 1/4 SAE Flat	1	151915
A9	Pump, Water, G-150A	1	151271
A10	Fitting, Plastic, 1/4 FNPT x 1/4 BARB	1	128397
A11	Hose, Vinyl, 1/4 ID	2'	132951
A12	Clamp, Flow, 1/4-1/2	1	154394
A13	Owner's Manual, Water Pump	1	155745
A14	Rip Guide	1	134551
	Screw, 1/4-20 x 3/4 Thumb	1	150991
A15	Large Bullnose Accessory	1	153201
	Screw, 1/4-20 x 3/4 Thumb	2	150991
A16	Owner's Manual, 660	1	153461
A19	Blade, 7 x 060 x 5/8, MK-100	1	153441
B	Blade Guard, 7", Assembly	1	154811-MK
B1	Guard, 7" Blade	1	151731
B2	Elbow, 1/8 MNPT x 1/4 BARB 90° Brass	1	154652
B3	Knob, Davies	1	151681
B4	Washer, 5/16 SAE Flat	2	151754
B5	Wing-nut, 5/16-18 Nylock	1	151746
D	Cutting Head (less blade guard)	1	n/a
D1	Cutting Head, 660	1	154291
D2	Cover, Cutting Head, 660	1	154293
D3	Gasket, Cover, 660	1	154381
D4	Screw, 10-24 x 5/8 Pan Head Phillips Self-Tapping Machine	8	153681
D5	Screw, 5/16-18 x 2 1/2 Hex Head Cap, Fully Threaded	1	151748
D6	Washer, 5/16 Split Lock	1	151747
D7	Motor, 3/4 HP 115V FWR, 660	1	154292
D7A	Motor, 3/4 HP 230V FWR, 660	1	153497
D8	Gasket, Thermal, 660	1	154346
D9	Screw, 10-24 x 5/8 Flat Head Phillips Machine	4	154295
D10	Flange, Inner, 660	1	154194
D11	Pin, 1/8 x 3/8 Spring	1	154982
D12	Flange, Outer	1	135830
D13	Nut, 5/8-18 UNF Hex	1	135848
D14	Cord, AC Power 120V (16/3 SJTW x 10', w/ molded 5-15P and Heyco 3251 Strain Relief)	1	153419
D15	Cord, Pump Pigtail, 16/3 SJTW x 1', w/ molded 5-15R and Heyco 3251 Strain Relief	1	154446
D16	Wire Harness, 660	1	153415
D17	Screw, 10-24 x 3/8 Pan Head Phillips Self-Tapping Machine	1	151262
D18	Resistor, 660	1	153535
D19	Tack, 1/4 Head	4	155659
D20	Switch, Thermal Overload, 660	1	167982

ITEM	DESCRIPTION	QTY	PART #
D21	Boot, Thermal Overload Switch	1	167983
D22	Switch, 15A\125V Lighted Rocker	1	153421
D23	Rectifier, 40 Amp	1	153677
D24	Screw, 10-24 x 3/4 Fillister Head Machine	1	151750
D25	Wire-nut, 3/#16 AWG (Blue)	1	155492
D26	Tag, 660 Serial Number	1	156561
D27	Label, Caution Strip	1	155214
D28	Label, When Motor Cools...	1	154409
E	Frame	1	n/a
E1	Frame	1	153322
E2	Pan, Plastic	1	151736
E3	Plug, Water Drain	1	153439
E4	Plate, Adjustment	2	151758
E5	Pin, Rolled	2	151783
F	Guide Bar, 5/8 Dia.	1	151739-MK
F1	Bar, Guide, 5/8 Dia.	1	151739
F2	Cover, Guide Bar	1	151740
F3	Spacer, 5/8 Guide Bar Cover	2	151755
F4	Screw, 5/16-18 x 1 Hex Head Cap	2	151743
F5	Washer, 5/16 Split Lock	2	151747
F6	Washer, 5/16 SAE Flat	2	151754
G	Linear Bearing	1	151737-MK
G1	Casting, Bearing, Linear	1	151737
G1a	Bearing, Multi-Lube	2	157126
G2	Screw, 5/16-18 x 1 Hex Head Cap	2	151743
G3	Washer, 5/16 Split Lock	2	151747
G4	Washer, 5/16 SAE Flat	2	151754
H	Post	1	n/a
H1	Post, Rear, 660	1	153451
	Shaft, 5/8 Pivot, 660	1	153452
H2	Screw, 3/8-16 x 2 Hex Head Cap	2	153485
H3	Screw, 3/8-16 x 1 Hex Head Cap	1	152507
H4	Washer, 3/8 Split Lock	3	150925
H5	Washer, 3/8 SAE Flat	4	150923
H6	Knob, 3/8-16 x 1-1/2 MK Adjustment	1	156770-02
J	Roller Wheel	1	151756
J1	Bracket, Roller Wheel	1	154021
J2	Wheel, Roller	1	151799
J3	Screw, 1/4-20 x 1 1/2 Hex Head Cap	1	151914
J4	Washer, 1/4 SAE Flat	1	151915
J5	Nut, 1/4-20 Hex	1	151893
K	Table, 660	1	n/a
K1	Table, 660	1	152680
K2	Screw, 5/16-18 x 1 Hex Head Cap	2	151743
K3	Washer, 5/16 Split Lock	2	151747
K4	Washer, 5/16 SAE Flat	2	151754

ITEM	NUMBER	DESCRIPTION	
1.	158434	MK-225, 7 x 5/8 Arbor	
2.	139311	MK-215, 7 x 5/8 Arbor	
3.	153293	MK-315, 7 x 5/8 Arbor	
4.	134577-MK	Dual 45° Flat Angle Guide	
5.	134569-MK	90° Protractor	
6.	152792	Dressing Stone	
7.	160488	Side Table	
8.	152601	Ground Fault circuit Interrupter	
9.	153201-MK	45° Miter	
10.	151889	Saw Stand	