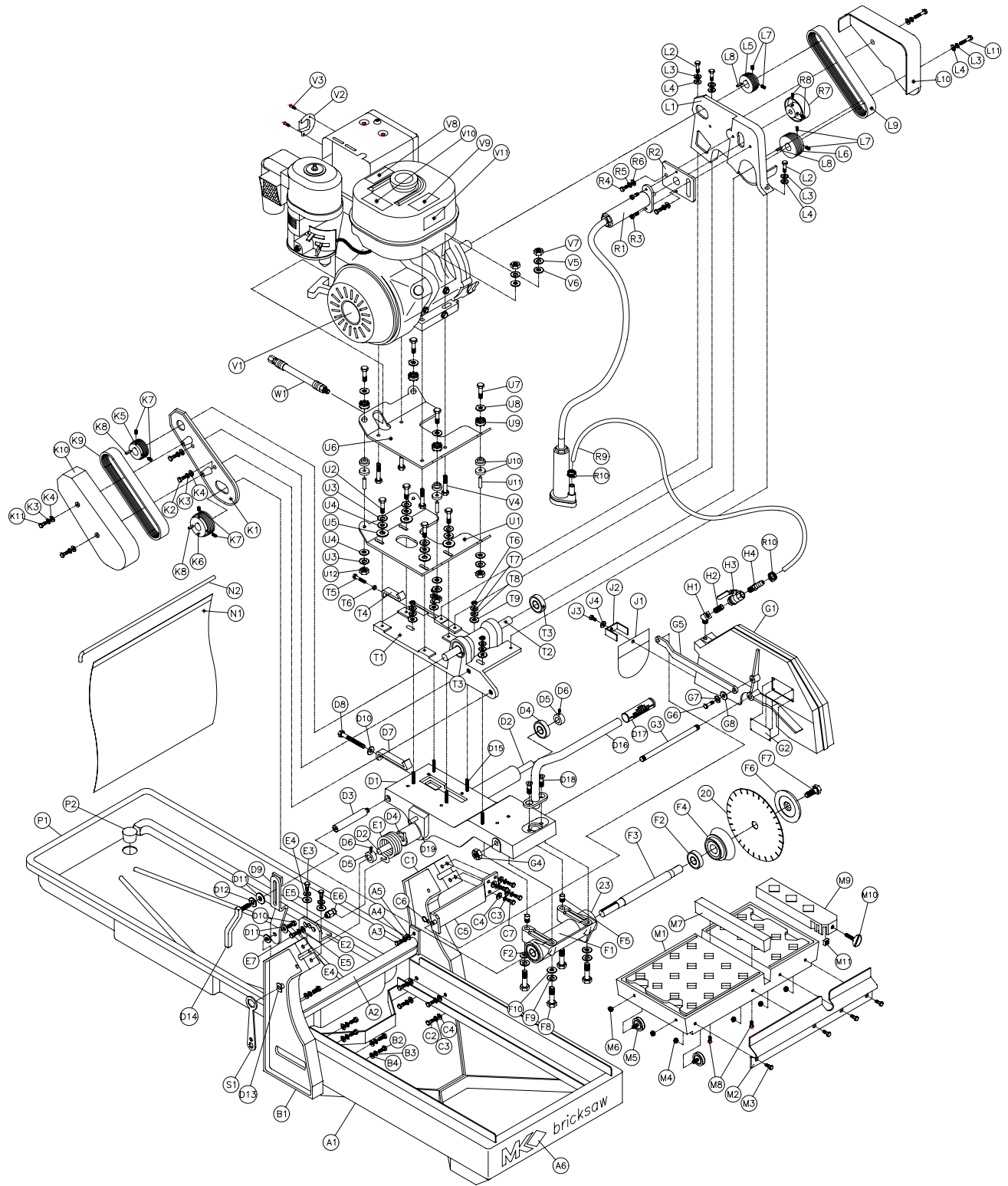


EXPLODED VIEW AND PARTS LIST

EXPLODED VIEW:



ENGINE GUARD INSTALLATION INSTRUCTION

PARTS LIST:

| Item | Description | Qty | MK p/n |
|----------|--------------------------------------------------|----------|----------|
| A | Assembly, Frame, MK2000 Brick saw | 1 | - |
| A1 | Frame, MK-2000 | 1 | 150595 |
| A2 | Crossbar, Support | 1 | 150594 |
| A3 | Screw, 5/16-18 x 1 Hex Head Cap | 1 | 151743 |
| A4 | Washer, 5/16 Split Lock | 4 | 151747 |
| A5 | Washer, 5/16 SAE Flat | 4 | 151754 |
| A6 | Label, MK Brick saw 12 – 1/2 x 1-3/4 | 1 | 155230 |
| B | Assembly, Upright Left | 1 | - |
| B1 | Casting, Upright Left | 1 | 150592 |
| B2 | Screw, 5/16-18 x 3/4, Hex Head | 6 | 151369 |
| B3 | Washer, 5/16 Split Lock | 6 | 151747 |
| B4 | Washer, 5/16 SAE Flat | 6 | 151754 |
| C | Assembly, Upright Right | 1 | - |
| C1 | Casting, Upright Right | 1 | 150593 |
| C2 | Screw, 5/16-18 x 3/4, Hex Head | 6 | 151369 |
| C3 | Washer, 5/16 Split Lock | 10 | 151747 |
| C4 | Washer, 5/16 SAE Flat | 10 | 151754 |
| C5 | Bracket, Blade Guard (Stay Level) | 1 | 150582 |
| C6 | Clip, Hairpin 1/4 Shaft | 1 | 153953 |
| C7 | Screw, 5/16 x 1 Hex Head Cap | 4 | 151743 |
| D | Assembly, Cutting Head | 1 | - |
| D1 | Casting, Cutting Head | 1 | 150583 |
| D2 | Shaft, Pivot | 1 | 154147 |
| D3 | Stud, Height Adjustment | 1 | 150585 |
| D4 | Bearing, Pivot Shaft | 2 | 140004 |
| D5 | Collar, Pivot Shaft | 2 | 140012 |
| D6 | Screw, 5/16-8 x 3/16 Socket Head Set | 2 | 151167 |
| D7 | Strap, Motor Adjustment | 1 | 150584 |
| D8 | Bolt, 3/8-16 x 3 1/2 Hex Head Cap | 1 | 153147 |
| D9 | Bracket, Cutting Head Height Adjustment | 1 | 156839 |
| D10 | Screw, 3/8-16 x 1 1/2 | 1 | 153528 |
| D11 | Washer, 3/8 SAE Flat | 3 | 150923 |
| D12 | Washer, 3/8 Split Lock | 1 | 150925 |
| D13 | Nut, T Plan Slab Weld | 1 | 153945 |
| D14 | Handle, Cutting Head Height Adjustment Lock Nut, | 1 | 151140 |
| D15 | Stud, 5/16-18 x 2 | 6 | 156959 |
| D16 | Handle | 1 | 139931 |
| D17 | Grip, Handle | 1 | 139949 |
| D18 | Screw, 3/8-16 x 1 Flat Head Screw Cap | 2 | 154019 |
| D19 | Pin, Split Wrist | 1 | 151358 |
| E | Assembly, Pivot Spring | 1 | - |
| E1 | Spring, Torsion Pivot | 1 | 150587 |
| E2 | Bracket, Spring Adjustment | 1 | 150589 |
| E3 | Screw, 5/16-18 x 1 Hex Head | 2 | 151743 |
| E4 | Washer, 5/16 Split Lock | 3 | 151747 |
| E5 | Washer, 5/16 SAE Flat | 3 | 151754 |
| E6 | Stud, Retaining Spring | 1 | 153788 |
| E7 | Screw, 5/16-18 x 3/4 Hex Head | 1 | 151369 |

EXPLODED VIEW AND PARTS LIST

| Item | Description | Qty | MK p/n |
|----------|---------------------------------------------------|----------|---------------|
| F | Assembly, Blade Shaft | 1 | 154636 |
| F1 | Casting, Blade Shaft-Arbor | 1 | 153791 |
| F2 | Bearing, Blade Shaft | 2 | 154594 |
| F3 | Shaft, Blade | 1 | 154639 |
| F4 | Flange, Inner | 1 | 154640 |
| F5 | Pin, Arbor Alignment | 2 | 153946 |
| F6 | Flange, Outer 14 Inch M-Saw | 1 | 132290 |
| F7 | Screw, 1/2-20 x 1 1/4, Hex Head (Blade Bolt) | 1 | 152122 |
| F8 | Screw, 5/16-18 x 2 -1/4 | 4 | 153951 |
| F9 | Washer, 5/16 Split Lock | 4 | 151747 |
| F10 | Washer, 5/16 SAE Flat | 4 | 150923 |
| G | Assembly, Blade Guard | 1 | - |
| G1 | Casting, Blade Guard | 1 | 150579 |
| G2 | Tag, Serial Number MK-2000 | 1 | 157007 |
| G3 | Shaft, Blade Guard Bolt | 1 | 150581 |
| G4 | Nut, 1/2-13 Hex Lock, Top | 1 | 153943 |
| G5 | Bar, Adjustment Blade Guard (Stay Level) | 1 | 150580 |
| G6 | Screw, 3/8-16 x 1 Hex Head | 1 | 152507 |
| G7 | Washer, 3/8 Split Lock | 1 | 150925 |
| G8 | Washer, 3/8 SAE Flat | 1 | 150923 |
| H | Assembly, Water Control Valve | 1 | - |
| H1 | Elbow, Street 45 1/4 MNPT | 1 | 153869 |
| H2 | Nipple, 1/4 MNPT x Close | 1 | 152598 |
| H3 | Valve, Female Ball - 1/4 Pipe | 1 | 152597 |
| H4 | Fitting, 1/4 MNPT x 1/2 Barb | 1 | 152704 |
| J | Assembly, Splash Guard | 1 | - |
| J1 | Curtain, Blade Guard | 1 | 152417 |
| J2 | Bracket, Water Curtain | 1 | 152723 |
| J3 | Screw, 1/4-20 x 1/2, Wing Screw | 1 | 151888 |
| J4 | Washer, 1/4 SAE Flat | 1 | 151915 |
| K | Assembly, Belt Guard MK-2005 (Arbor Side) | 1 | - |
| K1 | Casting, Belt Guard Inner | 1 | 156669 |
| K2 | Screw, 5/16-18 x 1 3/4 Hex Head | 2 | 151919 |
| K3 | Washer, 5/16 Split Lock | 3 | 151747 |
| K4 | Washer, 5/16 SAE Flat | 3 | 151754 |
| K5 | Pulley, Micro-V, 2.0 Diameter | 1 | 156291 |
| K6 | Pulley, Micro-V 2 3/8 Diameter | 1 | 156292 |
| K7 | Screw, 5/16-18 x 1/2, Socket Head Set (Cup Point) | 4 | 157084 |
| K8 | Key, 1-1/8 x 3/16 | 2 | 150344 |
| K9 | Belt, Micro-V (Gates 220J-10) | 1 | 156294 |
| K10 | Casting, Belt Guard Outer | 1 | 156670 |
| K11 | Screw, 5/16-18 x 2 1/2 Hex Head | 2 | 101675 |
| L | Assembly, Belt Guard MK-2005 (Engine Side) | 1 | - |
| L1 | Casting, Belt Guard Inner | 1 | 156671 |
| L2 | Screw, 5/16-16 x 1 Hex Head | 3 | 151743 |
| L3 | Washer, 5/16 Split Lock | 5 | 151747 |
| L4 | Washer, 5/16 SAE Flat | 5 | 151754 |
| L5 | Pulley, Micro-V, 2.0 Diameter | 1 | 156291 |
| L6 | Pulley, Micro-V 2 3/8 Diameter | 1 | 156292 |
| L7 | Screw, 5/16-18 x 1/2, Socket Head Set (Cup Point) | 4 | 157084 |

EXPLODED VIEW AND PARTS LIST

| Item | Description | Qty | MK p/n |
|------------|--------------------------------------------------|----------|---------------|
| L8 | Key, 1-1/8 x 3/16 | 2 | 150344 |
| L9 | Belt, Micro-V (Gates 220J-10) | 1 | 156294 |
| L10 | Casting, Belt Guard Outer | 1 | 156672 |
| L11 | Screw, 5/16-18 x 2 1/2 Hex Head | 2 | 101675 |
| | | | |
| M | Assembly, Table | 1 | 133082 |
| M1 | Casting, Table | 1 | 153790 |
| M2 | Stop-Rule, Table | 1 | 134387 |
| M3 | Screw, 1/4-20 x 3/4 Hex Head | 4 | 152370 |
| M4 | Nut, 1/4-20, Keps | 4 | 153941 |
| M5 | Wheel, Roller | 4 | 133090 |
| M6 | Nut, 5/16-18 Keps | 4 | 153942 |
| M7 | Wood Strip, Table Insert | 1 | 156427 |
| M8 | Screw, Pan HD Phil. #8 x 1 | 2 | 151047 |
| M9 | Casting, Squaring Arm | 1 | 132332 |
| M10 | Screw, 15/16-18 x 1 1/2, Thumb | 1 | 151155 |
| M11 | Nut, 5/16-18 Square | 1 | 151156 |
| | | | |
| N | Assembly, Curtain MK Logo | 1 | - |
| N1 | Rod, Splash Curtain | 1 | 153956 |
| N2 | Curtain, Rear | 1 | 150613 |
| | | | |
| N/A | Assembly, Curtain Plain | 1 | - |
| N/A1 | Rod, Splash Curtain | 1 | 153956 |
| N/A2 | Curtain, Rear Plain | 1 | 134841 |
| | | | |
| P | Assembly, Pan MK Logo | | |
| P1 | Pan, Plastic | 1 | 150308 |
| P2 | Plug, Rubber Drain Without Hole | 1 | 153439 |
| | | | |
| R | Assembly, Water Pump, Mechanical | 1 | - |
| R1 | Pump, Water Centrifugal | 1 | 157082 |
| R2 | Mount, Water Pump | 1 | 156108 |
| R3 | Screw, 5/16-18 x 1/2 Socket Head Cap | 2 | 152473 |
| R4 | Screw, 3/8-16 x 1 Hex Head | 2 | 152507 |
| R5 | Washer, 3/8 Split Lock | 2 | 150925 |
| R6 | Washer, 5/16 Flat Cut | 2 | 101352 |
| R7 | Pulley, 2.69 Diameter | 1 | 157048 |
| R8 | Screw, 5/16-18 x 1/2 Socket Head Set (Cup Point) | 2 | 157084 |
| R9 | Hose, Vinyl 1/2 x .748 | 3 ft | 152410 |
| R10 | Clamp, 7/8 Hose | 2 | 154173 |
| | | | |
| S | Assembly, Accessory Pack | 1 | - |
| S1 | Wrench, Masonry Saw | 1 | 134056 |
| S2 | Insert, Accessory | 1 | 153576 |
| S3 | Blade, MK-BX30 | 1 | 157944 |
| S4 | Owner's Manual | 1 | 158320 |
| | | | |
| T | Assembly, Engine Base | 1 | - |
| T1 | Casting, Engine Base | 1 | 156673 |
| T2 | Shaft, Arbor | 1 | 156295 |
| T3 | Bearing, Jack Shaft | 2 | 139956 |
| T4 | Strap, Engine Belt Tensioning | 1 | 156955 |
| T5 | Screw, 5/16-18 x 1 Socket Head Cap | 1 | 151743 |
| T6 | Nut, 5/16-18 Hex | 6 | 101196 |

EXPLODED VIEW AND PARTS LIST

| Item | Description | Qty | MK p/n |
|----------|-------------------------------------------------------------|----------|-----------|
| T7 | Washer, 5/16 Split Lock | 5 | 151747 |
| T8 | Washer, 5/16 SAE Flat | 5 | 151754 |
| T9 | Washer, 7/16 Flat Cut | 5 | 101352 |
| U | Assembly, Plates, Engine Mounting (Top & Bottom) | 1 | - |
| U1 | Plate, Lower Engine Mounting | 1 | 156296 |
| U2 | Screw, 5/16-18 x 1, Socket Head Cap | 1 | 151743 |
| U3 | Washer, 5/16 Split Lock | 8 | 151747 |
| U4 | Washer, 5/16 SAE Flat | 8 | 151754 |
| U5 | Washer, 5/16 Flat Cut | 4 | 151050 |
| U6 | Plate, Engine Mounting, Upper | 1 | 156297 |
| U7 | Screw, 5/16-18 x 2, Socket Head Cap | 4 | 155494 |
| U8 | Washer, Fender, 5/16 ID x 1.0 OD | 4 | 151053 |
| U9 | Shock Mount, Upper | 4 | 156961 |
| U10 | Shock Mount, Lower | 8 | 156962 |
| U11 | Bushing, Stand Off, Shock Mount | 4 | 156104 |
| U12 | Nut, 5/16-18 Hex | 4 | 101196 |
| V | Assembly, Engine, Honda 5.5 hp | 1 | - |
| V1 | Engine, Honda 5.5 hp W/Cyclone Filter | 1 | 156282 |
| V2 | Deflector, Honda | 1 | 156710 |
| V3 | Screw, 6-32 x 3/8 Pan Head Phillips Self-Tapping Cap | 2 | 153466 |
| V4 | Screw, 5/16-18 x 1 1/2, Hex Head Cap | 4 | 152467 |
| V5 | Washer, 5/16 Split Lock | 7 | 150747 |
| V6 | Washer, 5/16 SAE Flat | 6 | 150754 |
| V7 | Nut, 5/16-18, Hex | 6 | 101196 |
| V8 | Label, Hot Surface, Caution | 1 | 155578 |
| V9 | Label, Refueling Warning | 1 | 155580 |
| V10 | Label, California, Danger | 1 | 155581 |
| V11 | Label, Lethal Exhaust, Danger | 1 | 155582 |
| V12 | Oil Drain, M10 x 3/8 Push | 1 | 157577-01 |
| V13 | Guard, Engine | 1 | 159562 |
| V14 | Arm, Support | 1 | 159563 |
| V15 | Screw, 5/16-18x3/4 Hex Head Cap | 2 | 151369 |
| V16 | Screw, 3/8-16x1 Hex Head Cap | 1 | 152507 |
| V17 | Washer, 3/8 SAE Flat | 2 | 150923 |
| V18 | Washer, 3/8 Split Lock | 1 | 150925 |
| V19 | Bolt, 5/16-24x1 Hex Head Tap | 1 | 157646 |
| V20 | Nut, 3/8-16 Hex | 1 | 101188 |