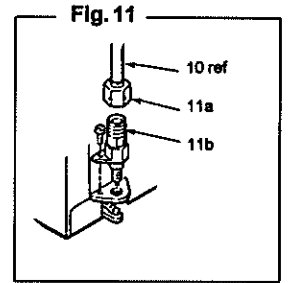
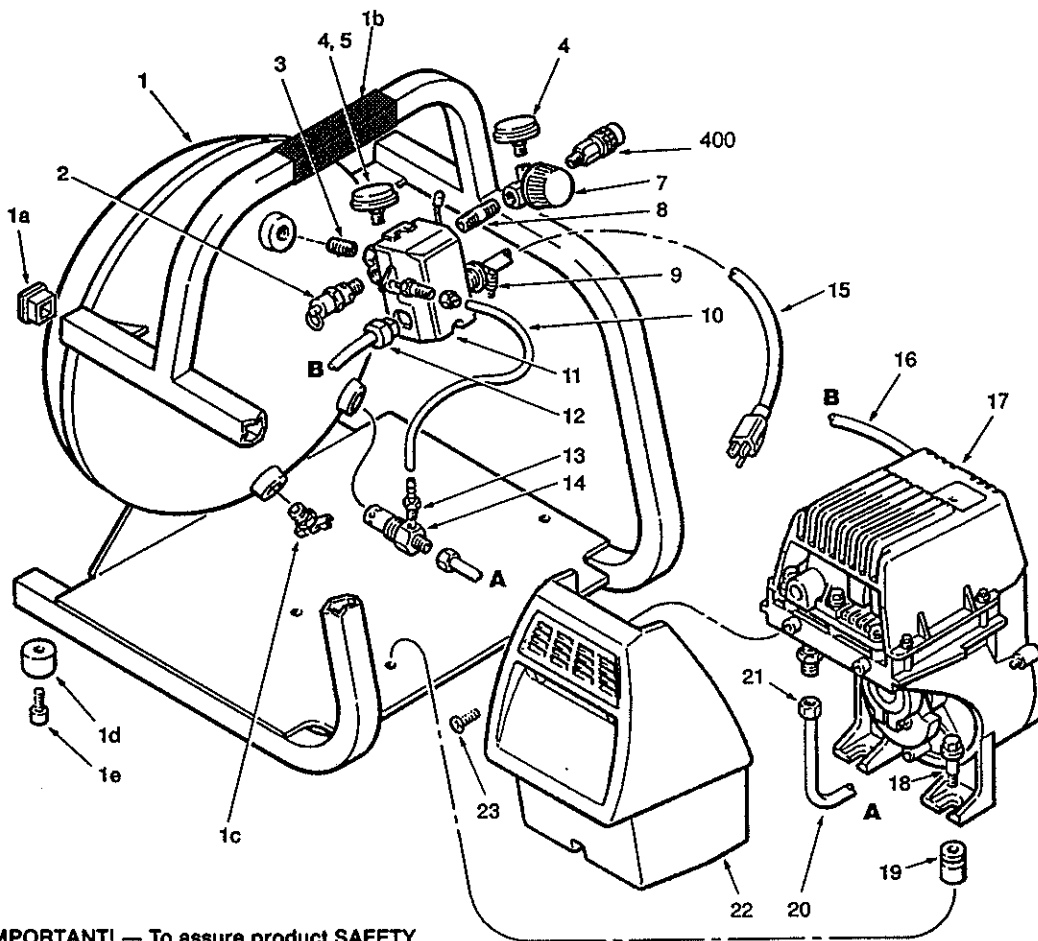


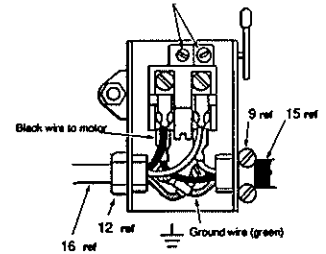


AIR COMPRESSOR, 1.5 HP

Model MAC1000



Note These are not connection screws. NEVER turn these screws; doing so will void the warranty. They have been pre-adjusted at the factory for proper operation of the pressure switch.



IMPORTANT! — To assure product SAFETY and RELIABILITY, repairs, maintenance or adjustments should be performed by MAKITA Service Centers, or other qualified service organizations. Always use MAKITA replacement parts.

Fig.	Part No.	Qty. Used	Description	Fig.	Part No.	Qty. Used	Description
1	150003-4	1	TANK ASSEMBLY (Includes 1a - 1e, 3.5 Gallons)	11b	058001-7	1	NUT, 1/4" O.D. TUBE
1a	077014-1	4	CAP	12	071000-8	1	STRAIN RELIEF
1b	093002-6	1	GRIP, HANDLE	13	068050-6	1	CONNECTOR
1c	072000-1	1	PETCOCK	14	031003-7	1	VALVE, CHECK
1d	094002-6	4	FOOT	15	026014-2	1	CORD, POWER
1e	061000-5	4	SCREW, #10X.75" LG.	16	026016-0	1	CORD, INTERCONNECT B-B
2	136003-7	1	VALVE, 135 PSI, 1/4 NPT ASME	17	040026-9	1	1.5 H.P.PUMP/MOTOR ASSY
3	065003-1	1	NIPPLE, 1/4 NPT X .87" LG.	18	059022-1	3	BOLT, SHOULDER, 1/4-28
4	032005-2	2	GAUGE, 200 PSI	19	093001-9	3	GROMMET
5	063002-3	1	BUSHING, 1/4 NPT X 1/8 NPT	20	145027-5	1	TUBE, TRANSFER A-A
7	019016-7	1	REGULATOR	21	058000-7	2	NUT, 3/8" O.D. TUBE
8	065003-3	1	NIPPLE, 1/4 NPT X 1.50" LG.	22	142009-7	1	SHROUD
9	071000-2	1	STRAIN RELIEF	23	061006-1	3	SCREW, #8-32 X 3/8" LG.
10	145027-6	1	TUBE BLEEDER	ACCESSORY			
11	034011-6	1	SWITCH, PRESSURE (Includes 11a)	400	036003-1	1	COUPLER, 1/4-18 NPT
11a	136001-3	1	VALVE, BLEEDER (Includes 11b)				

Pump/Motor Assembly

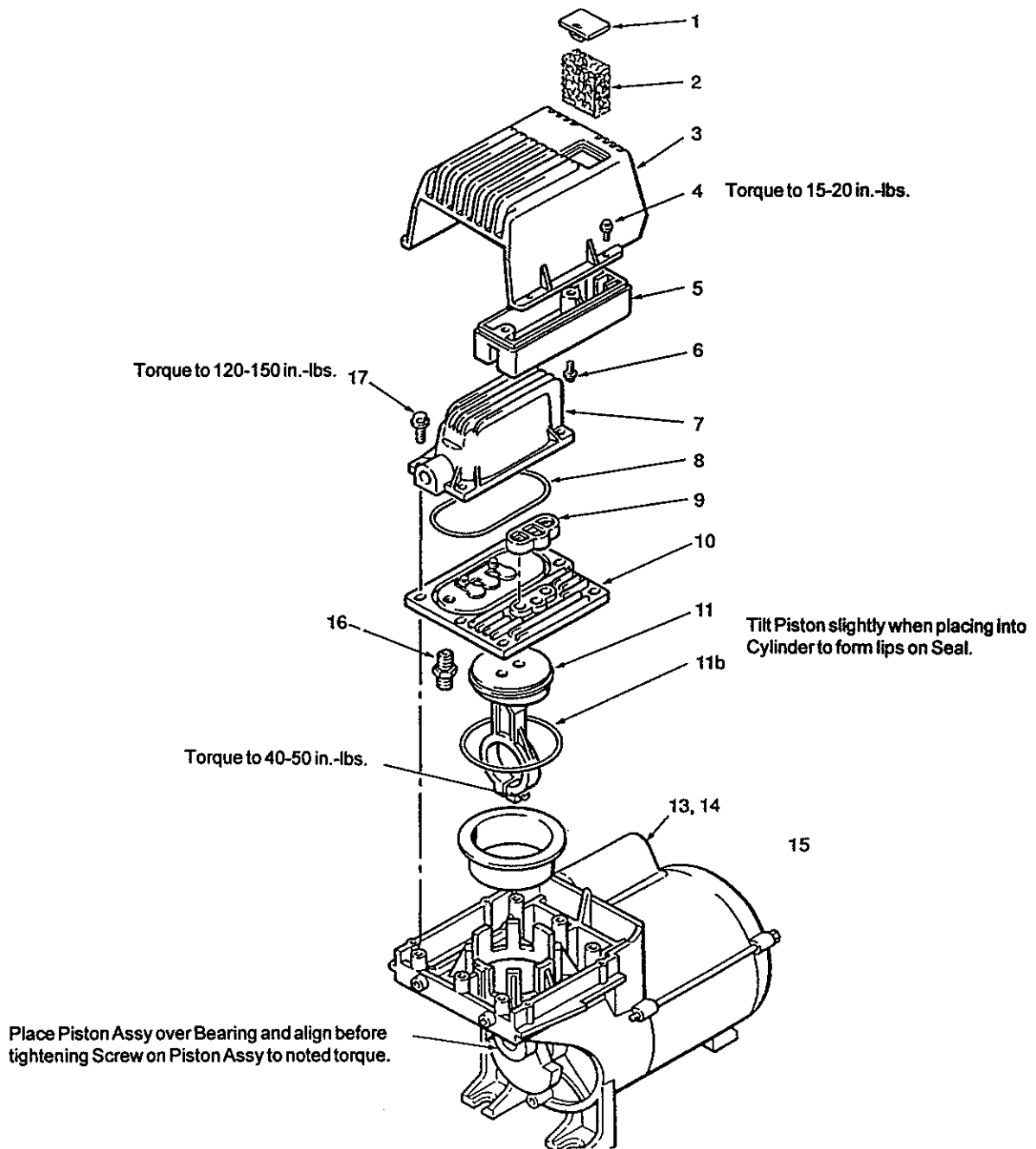


Fig.	Part No.	Qty. Used	Description	Fig.	Part No.	Qty. Used	Description
1	077011-8	1	COVER	10	043015-1	1	VALVE PLATE ASSEMBLY
2	019015-2	1	FILTER	11	048007-4	1	PISTON & CYLINDER ASSY (Includes Item 11b)
3	077013-6	1	COVER	11b	054015-8	1	O-RING
4	061006-1	4	SCREW	13	166004-0	1	CAPACITOR, START, BLACK
5	019015-1	1	MANIFOLD	14	166005-4	1	COVER
6	061006-0	2	SCREW	15	077013-7	1	COVER, TERMINAL
7	117000-9	1	MANIFOLD	16	068001-7	1	CONNECTOR
8	054015-7	1	O-RING	17	061006-2	6	SCREW
9	046023-1	1	SEAL				